



**P&T**  
PARK & TILFORD  
SCOTCH

Our own Special Selection from  
Scotland's finest distilleries

**\$5.29**  
4/5 Quart

## \$50,000 Donation Made To St. Mary's Hospital

A princely contribution amounting to \$50,000 was recently presented to the St. Mary's hospital by its Women's Board. Presentation was made to Sister Winifred, Administrator, by Mrs. Benedict Messner, Seton co-chairman.

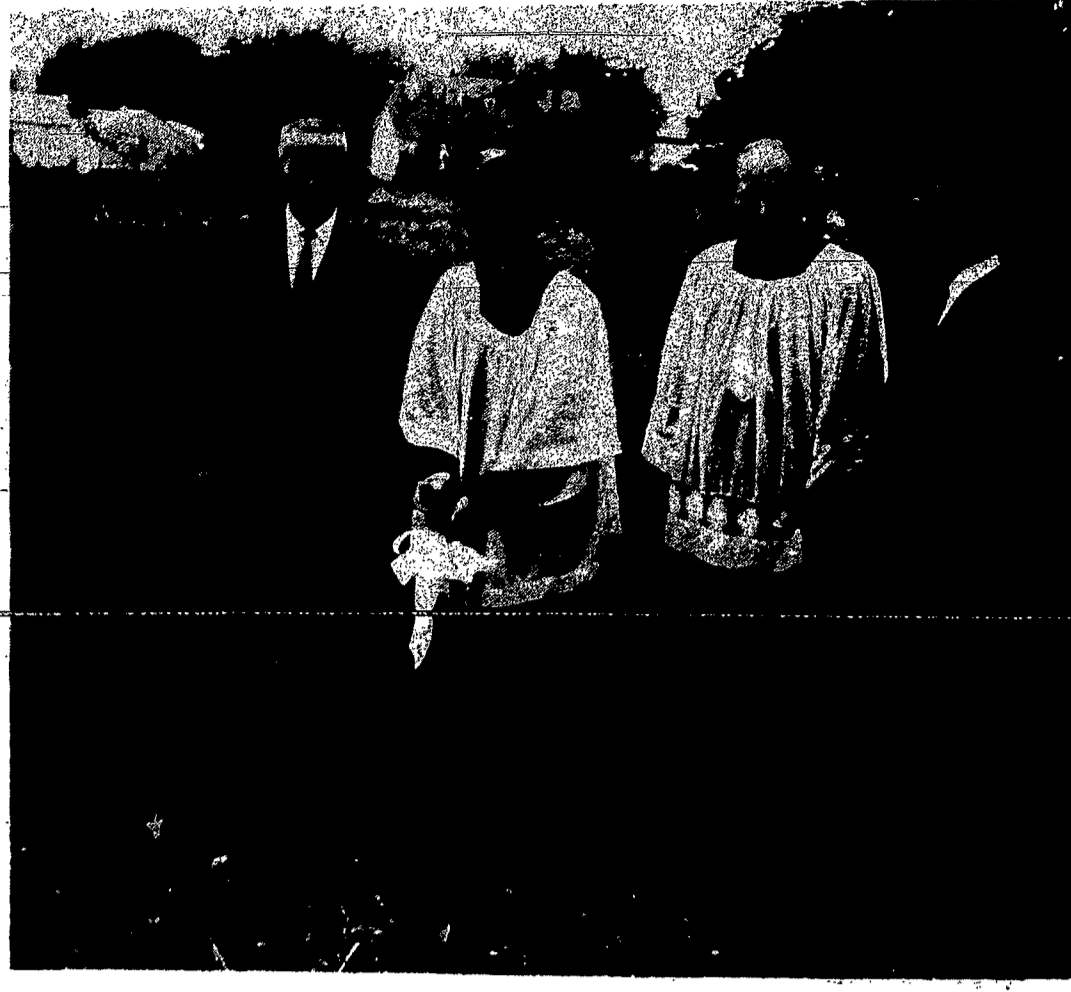
Of this amount \$38,000 represents the proceeds of the first three Seton Balls, which were intended specifically to help defray the cost of equipment and furnishings of the Physical Therapy Department. The money has been drawing interest since 1958 for the new department which was opened this summer.

Balance of \$12,000 represents

## Seton Groups In Action

74TH BRANCH of Seton Workers of St. Mary's Hospital to be entertained by Mrs. Fernando DiNardo at a luncheon, Tuesday, August 31 at Ridgmont Golf Club.

## Groundbreaking Rite at Hilton Parish



BREAKING GROUND for the new St. Leo's Church and parish center in Hilton is Father Jacob Rauber, pastor. Also shown in photo are Father James Malley, and trustees Harley Bigler and George Eichas.

Ground was broken for the new St. Leo's Church and parish center in Hilton on Sunday, Aug. 8 following the noon-day Mass.

Father Jacob Rauber, pastor, presided at the rites which initiated the final phase of the building program. Also present were Father James Malley, assistant pastor, trustees George Eichas and Harley Bigler, and Mrs. John Petrilli, president of the Confraternity of Christian Mothers.

Father Rauber announced that construction would begin this week. It is expected that the building will be completed and ready for occupancy in the spring.

The new building has two sections. The church section will accommodate 500 people at each Mass on Sunday, doubling the present capacity of the old church.

Attached to the church is the second section containing 6 classrooms for the religious instruction of the 500 Catholic students attending Hilton public schools. Four classrooms can be combined by means of folding walls into a large hall for social functions, audio visual instruction, or to accommodate another 200 people for Mass. A large kitchen, principal's office, mimeograph room, teachers' lounge, sacristies, store rooms, and rest rooms, are also included in this section.

The building will be air conditioned throughout. Features include brick walls, laminated wood arches, natural finish wood ceilings, and a full length skylight in the church.

The building is located about 500 feet directly behind the present church on property purchased this past year by Father Rauber. This location will eliminate the need and expense of transporting children for religious instructions, and will make it possible to have classes at various hours convenient to the local school. All public schools are within six minutes walking time of the site.

## 25 Years Ago

(From files of Catholic Courier, August 29, 1940)

Cornerstone of the new St. Mary Magdalen Church in Wolcott, established with approval of Bishop Keenan, was to be laid by Very Rev. John A. Conway, V.F. of Auburn.

One hundred girls from Rochester, Elmira and surrounding towns made a closed retreat at Sacred Heart Convent, 8 Prince St., conducted by Rev. Harold Pfeiffer, S.J. of Buffalo.

Parishioners of St. Rose Church, Lima on the Feast of St. Rose of Lima honored Sister M. Teresta of the Sisters of St. Joseph leaving after 38 years service in St. Rose School.

Alhambra Director Rt. Rev. Msgr. James V. Ennis, national spiritual director of the Order of the Alhambra in 1955 died August 13, 1965 in North Evans, N.Y. Monsignor Ennis, pastor of St. Vincent de Paul Parish, North Evans had been in the priesthood nearly four decades.

## Are you caught in the 'Income' squeeze?

You're a widow. A retired businessman. A person living on a fixed income—possibly the same income you were living on five or ten years ago. Now you are feeling the squeeze of inflation. Prices keep going up, but your income stays the same. What should you do? Reduce your standard of living? Go into debt? Switch into higher yielding securities? Sell the valuable stocks you own?

## Lincoln Rochester offers a unique solution.

A new banking service for investors. A service offered by no other banking institution in the world. A service which will supply you with supplementary cash to live on; to help another member of your family; to pay for a prolonged illness; to donate to

your church, school or favorite charity; to make mortgage or insurance payments; to send a child through college... even to fulfill such business obligations as long-term debt liquidation, purchase or leasing payments for capital equipment or real estate.

## We call our new service "Spending Power Accounts."

To open a Spending Power Account, you should hold a minimum of \$10,000 worth of common stocks in any one of the following companies:

- American Cyanamid Company
- American Telephone & Telegraph Company
- Chrysler Corporation
- Consolidated Edison Company of New York, Inc.
- Dow Chemical Company
- DuPont (E.I.) De Nemours & Company
- Eastman Kodak Company
- Ford Motor Company
- General Electric Company
- General Foods Corporation
- General Motors Corporation
- General Telephone & Electronics Corporation

- Gulf Oil Corporation
- International Business Machines Corporation
- International Harvester Company
- Minnesota Mining & Manufacturing Company
- National Dairy Products Corporation
- Pacific Gas & Electric Company
- Pfizer (Chas.) & Company, Inc.
- Proctor & Gamble Company
- Radio Corporation of America
- Sears, Roebuck & Company
- Socony Mobil Oil Company, Inc.
- Standard Oil Company of California
- Standard Oil Company (New Jersey)
- Texas Incorporated
- Union Carbide Corporation
- United States Steel Corporation
- Westinghouse Electric Corporation
- Xerox Corporation

## Why is a "Spending Power Account" a superior cash-producing plan for you?

1. You make use of the securities you already own.
2. You retain complete control of your investment.
3. Your dividends buy additional shares of your security.
4. You dictate the amount of monthly or quarterly cash-flow you want.
5. Your capital gains tax liabilities are held to budgeted annual levels.
6. You receive a continuous flow of orderly accounting information.
7. Every detail of your account is handled with Trust Department precision.

## What does noted financial writer Harry France say about Lincoln Rochester's new "Spending Power Accounts?"

"Your 'Spending Power Accounts' are marvelous... 'Spending Power Accounts,' brilliantly conceived and admirably administered, will help to solve the financial problems of armies of investors needing more income... There are hundreds of thousands

of people who might well open a 'Spending Power Account' and thus assure themselves of a plan of money management unique in character and efficient in execution."

Get complete  
information  
without  
obligation.

**"SPENDING POWER ACCOUNTS"**  
Trust Division  
Lincoln Rochester Trust Company  
183 East Main Street  
Rochester, N. Y. 14603

**Send this  
Coupon now.**

Gentlemen:

I would like to know more about your unique solution to the problem of "Income Squeeze." Please send me your free booklet entitled SPENDING POWER ACCOUNTS. It is understood that I will be under no obligation and that no one will call on me.

Name \_\_\_\_\_  
Address \_\_\_\_\_  
City \_\_\_\_\_ State \_\_\_\_\_ Zipcode \_\_\_\_\_

Lincoln Rochester  
Spending Power Accounts

## A New Church for Naples

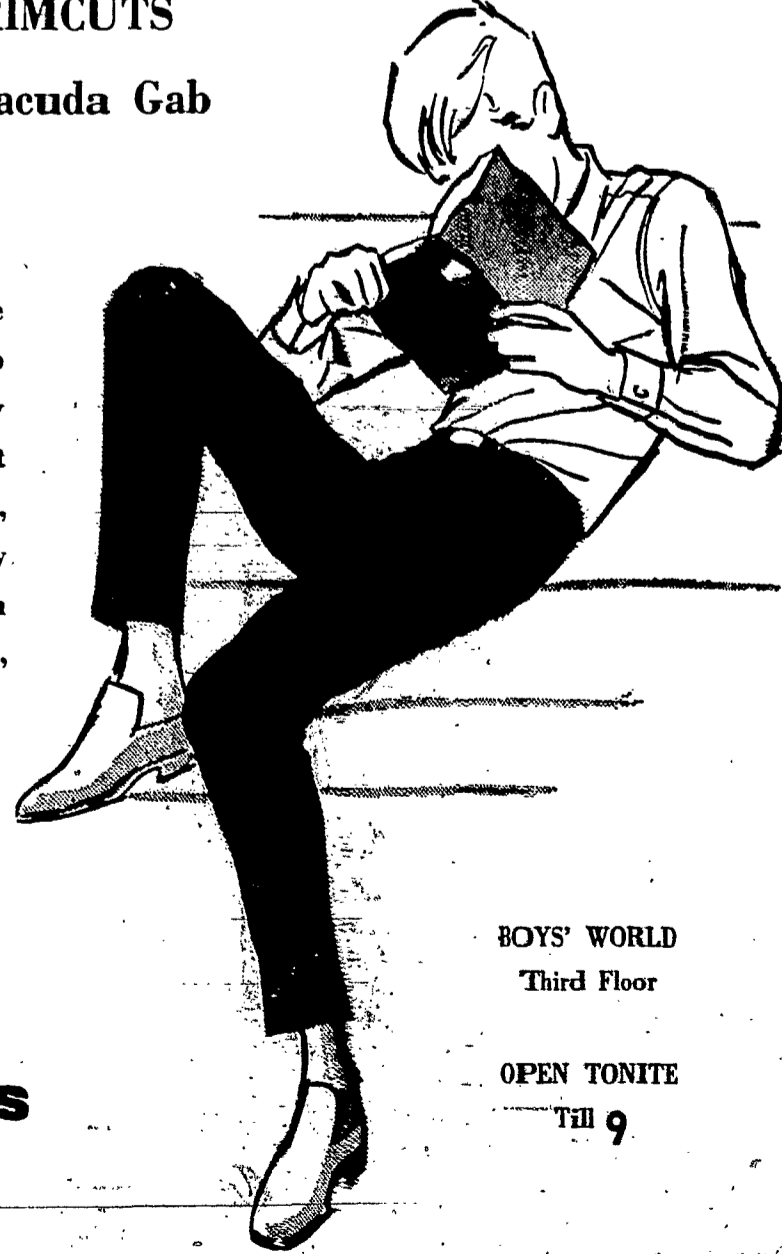
Soon there'll be a new St. Januarius Church in Naples. Replacing the little white frame wood church will be a modern design structure to accommodate the increasing number of visitors to this center of the New York State wine country. Monsignor George Cocuzzi, Chancellor of the Diocese, presided at groundbreaking rites Sunday, August 8. With him are Father Bernard Kuchman, pastor, Richard Doty, mayor of Naples, and Phillip Baader, chairman of the parish fund drive.

McFarlin's

## LEVI'S TRIMCUTS In STA-PREST Barracuda Gab

The most wonderfully carefree slacks ever! The neat, sharp crease is in to stay, slacks stay smooth, wrinkle-free. This great blend of 50% Fortrel polyester, 50% cotton is trimly styled by Levi's with belt loops, cuffs. In Desert Sand, Pewter, Olive, Blue Olive.

Sizes 6-12 \$4.98  
Sizes 26-30 \$5.98



BOYS' WORLD  
Third Floor

OPEN TONITE  
Till 9

McFARLIN'S

MARY HURST w performance in th Nursing, Hornell, Dawn Reed, Marg to be juniors, this

## 26 Nursing Move Up

Hornell — Annual s ceremonies at St. James Hospital School of Nursi 26 Freshmen Nursing S was held Wednesday, Aug 5 p.m. on the north lawn hospital. Sister Mary T Director of the School, w ed the parents and rela the students and congra the Freshmen studen achieving this milesto their nursing program. Thomas expressed her a ation to the faculty fo dedicated and effective in the preparation of nurses.

THE STUDENTS were ed by Sister Theresa Ma Miss Carolyn Koch, m of the faculty.

As each student was she received a lighted from the Florence Nigh lamp held by Miss Mary a student with high scl average in theory and performance. After all t dents received their strig lighted candles, Sister M led the recitation of the Pledge of Fidelity.

Father John Coonan, la in of the Hospital, a structor on the faculty, congratulatory commen gave the invocation an diction.

A picnic supper follow

## Appointed to Coll

John Joyce, who holds and M.A. from Canisius will be an instructor English department at N College next year.

His previous experier included teaching at Lar na Senior High School the University of Buffal

ST  
A QU  
NEW



WORLD'S  
TRADEMA