



SOMEHOW, SISTER LOUIS BERTRAND managed to get the elephant from the visiting clinic to entertain the children from the pediatric ward.



SANTA'S LITTLE HELPER was always Sister Louis Bertrand at the annual Christmas Party for the children's ward.



SISTER ALWAYS HAS TIME to give a "lift" to one of the children.

### Sister Louis Bertrand

## She Shared All her Dreams

By JOHN M. WRIGHT, JR.  
(Special to the Courier-Journal)

Selma, Ala.—At the opening of the new Good Samaritan Hospital here draw close memories of a remarkable woman who worked tirelessly as administrator of the hospital for almost twenty years. The hearts of everyone in Selma who ever knew Sister Louis Bertrand, S.S.J.,

marked with Sister Louis Bertrand will always remember her as a woman who worked tirelessly as administrator of the hospital for almost twenty years. The hearts of everyone in Selma who ever knew Sister Louis Bertrand, S.S.J.,

marked with Sister Louis Bertrand will always remember her as a woman who worked tirelessly as administrator of the hospital for almost twenty years. The hearts of everyone in Selma who ever knew Sister Louis Bertrand, S.S.J.,

marked with Sister Louis Bertrand will always remember her as a woman who worked tirelessly as administrator of the hospital for almost twenty years. The hearts of everyone in Selma who ever knew Sister Louis Bertrand, S.S.J.,

marked with Sister Louis Bertrand will always remember her as a woman who worked tirelessly as administrator of the hospital for almost twenty years. The hearts of everyone in Selma who ever knew Sister Louis Bertrand, S.S.J.,

marked with Sister Louis Bertrand will always remember her as a woman who worked tirelessly as administrator of the hospital for almost twenty years. The hearts of everyone in Selma who ever knew Sister Louis Bertrand, S.S.J.,

marked with Sister Louis Bertrand will always remember her as a woman who worked tirelessly as administrator of the hospital for almost twenty years. The hearts of everyone in Selma who ever knew Sister Louis Bertrand, S.S.J.,

marked with Sister Louis Bertrand will always remember her as a woman who worked tirelessly as administrator of the hospital for almost twenty years. The hearts of everyone in Selma who ever knew Sister Louis Bertrand, S.S.J.,

A NATIVE of Coaling, New York, Sister Louis Bertrand was the daughter of the late Mr. and Mrs. Louis Dixon. Her father was a prominent businessman before she became a nun. After graduating from St. Joseph Hospital School of Nursing, Elmira, in 1916, she entered the Sisters of St. Joseph of Rochester on Sept. 8, 1924, except for the period from 1933 to 1935, when she earned a B.S. degree in Nursing Education at Catholic University, Washington, D.C. Sister Louis Bertrand was assigned to St. Joseph Hospital and St. Joseph School of Nursing until 1945.

In 1944 the Fathers of St. Edmund acquired title to the original Good Samaritan Hospital in Selma. Only a few years before this small band of missionary priests had opened up a Southern Mission with headquarters in Selma.

The founder of the Mission was the late Father Frank C. S.S.J., in search for a group of nuns to operate the hospital. She was put in touch with the Sisters of St. Joseph of Rochester. Before many weeks passed, two Sisters from the community were sent to work at Good Samaritan in the Fall of 1945. Sister Louis Bertrand was named Administrator of the hospital.

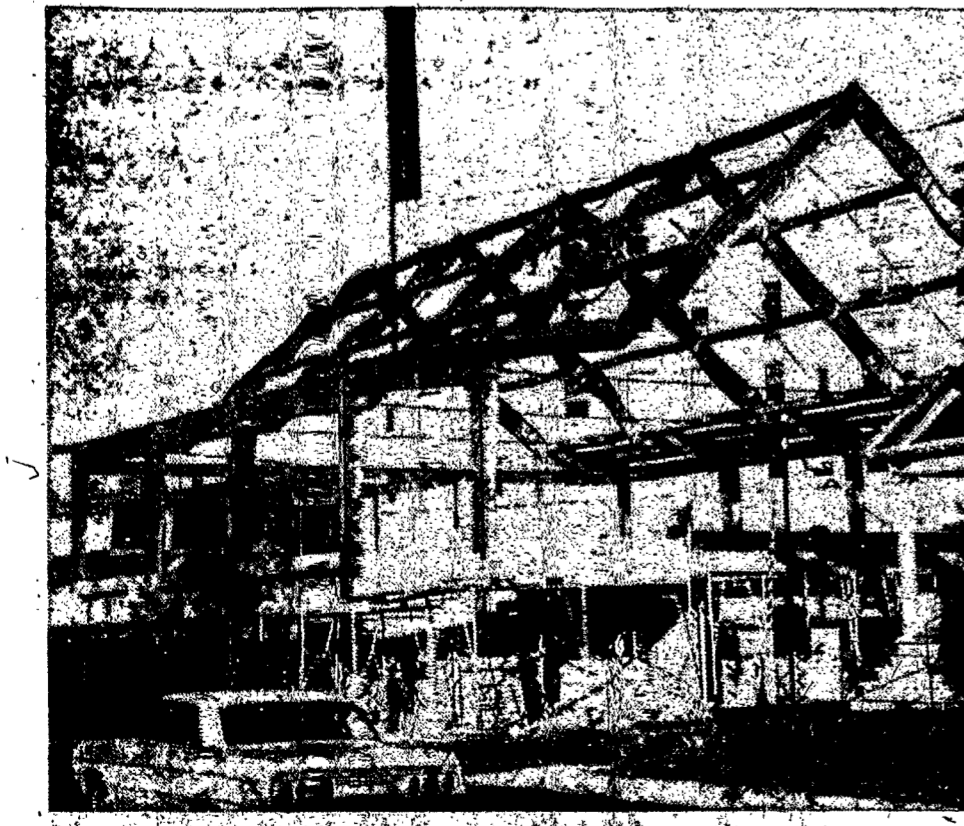
Sister was seriously injured in an automobile accident in February of 1953. She remained in Selma until May of that year. Sister is now convalescing at St. Joseph's Convent in Rochester.

But she stays in touch with her devoted sister companions and hospital employees through the mail. Hardly a week passes that someone hasn't heard from her.

Those who knew Sister Louis Bertrand well during her years in Selma can best tell what she meant to them.

One of her closest friends and her companion in the ill-fated auto accident is Sister Eguori, S.S.J., who recalls that Sister Louis Bertrand, "An able administrator, Sister was also a real friend and trusted confidante to many through the years. . . . Those who were privileged to have known and

worked with Sister Louis Bertrand will always remember her as a woman who worked tirelessly as administrator of the hospital for almost twenty years. The hearts of everyone in Selma who ever knew Sister Louis Bertrand, S.S.J.,



### New Chapel At St. Mary's Hospital

NEW CHAPEL at St. Mary's Hospital is one phase of the \$4 million expansion program there. The chapel will seat 200 and is located directly behind the main building and will be connected to the main floor of the hospital.

### Ontario Church Building Begins

Work on the new St. Mary's of the Lake Church Ontario was begun Monday, Nov. 9 with the start of construction on the roadway leading from Walworth Road to the 11-acre site, the Rev. William J. Gaynor, pastor reported this week.

Construction of the new church follows success of the campaign for \$150,000 which resulted in a total of \$180,000 and more in pledges. The campaign was headed by Herman J. Walz, general chairman and conducted by Foley Associates.

THE APPROACH to the new church designed by Ribson Roberts of Rochester will be from the east along a tree-lined road. The church with a seating capacity of 440 is scheduled for

### Weekend Drive Set For Holy Name Parish

The final efforts for Holy Name of Jesus Parish Church Campaign will take place this weekend, it was announced by Rev. Thomas M. Reddington, pastor and honorary general chairman for the campaign.

More than 300 men of the newly formed parish will gather for the General Kickoff Meeting, Saturday, Nov. 14, 8 p.m. in St. Charles Borromeo School Hall, Monsignor George Cocuzzi, Chancellor of Rochester Diocese will be the featured speaker at the Kickoff Meeting.

The men will gather for Benediction at 2:00 p.m., Sunday, November 15, in St. Charles Church and then go out to complete the solicitation. Reports will be made to the General Committee Division Leaders in St. Charles School Portable Building. Father Reddington has requested that the parishioners remain at home Sunday afternoon to enable the men to complete the solicitation.

This past week, the Advance Solicitation Committee conducted the Advance Solicitation with most satisfactory results. Father Reddington reported, but there are presently a large number of cards unreported, and he has urged that the men complete these calls and report them as quickly as possible. Co-chairmen for the Advance Solicitation are Carl F. Ottone and Donald Dohr.

Heading up the General Committee for this weekend's work is George H. Scheible, General Chairman, and Thomas A. Bristol, Dr. Robert Mueller, Carl F. Ottone and John J. White, General Vice-Chairman.

### Widowed Group Slates Mass

A corporate Mass will be celebrated by Father Gerald Dunn at St. Morice Church, Nov. 14 at 12 noon for the deceased spouse of each member of the Widowed Catholic Parent Club.

### Adult Sodalis Services Listed

Rev. Hugh Brady, spiritual director at St. Bernard Seminary will conduct an Evening of Reflection for the Adult Sodalis of the Diocese of Rochester, Monday, Nov. 16.

Services at Holy Family Parish Hall will start at 7:45 p.m. All adult Sodalis and interested persons are invited.

### 25 Years Ago

(From files of the Catholic Courier, Nov. 16, 1939)

Sister Theopane (nee Miller) wrote from her mission at Alexis, New Guinea that she had among the natives and two native persons a most interesting and beautiful life.

St. John the Evangelist Parish, Rochester was preparing for a Solemn Pontifical Mass by Bishop Kearney to mark the parish's 25th anniversary. Archbishop Thomas M. McElroy was to deliver the sermon. Rev. John B. Sullivan, pastor was directing arrangements.

Sisters of St. Joseph were inviting friends and the general public to a sale in "The Glass House", 981 Lake Ave. for the Sisters' benefit.

## The Catholic COURIER

THE NEWSPAPER OF THE ROCHESTER DIOCESE Journal

Thursday, November 12, 1964 PAGE 9

### Retreat House Campaign Reaches 88 Per Cent

A total of \$44,675.50 was reported last Monday evening as cleanup efforts continue in the drive to raise a minimum of \$500,000 for the new Notre Dame Retreat House. This new total approximates 88 per cent of the minimum goal and 59 per cent of the challenging goal of \$700,000.

"As our campaign for a new retreat house draws to a close, it is filled with a strong sense of gratitude to the many hundreds of men from all around the diocese who have worked on the various committees," stated the Very Rev. Michael G. Downing, C.S.S.R., rector. "Thanks to the dedication of the more than 1,500 workers, this campaign will surely culminate in success once the final reports are in and we have accounted for all cards."

REGION III: Livingston County and the Western half of Steuben County — Final Clean Up Report—Thursday, Nov. 29, St. Mary's School Hall, Dansville, 7:30 p.m. Ontario and Yates counties—Final Clean Up Report—Thursday, Nov. 19, St. Mary's Church Hall, Canandaigua, 7:30 p.m.

### Vocation Mass For Basilians

The Fall Mass for Vocations for Friends and relations of the Rochester Basilian Fathers will be at the House of Studies, 50 Fairport Rd., on Saturday, Nov. 14, at 1 a.m.

In view of the number of cards still outstanding reports meetings will continue in the various regions throughout the diocese this coming week.

REGION I: Monroe County—Final Clean Up Report—Monday, Nov. 16, Notre Dame Retreat House, 8 p.m.

REGION II: Cayuga, Wayne and Seneca counties — Final Clean Up Report — Tuesday, Nov. 17, Knights of Columbus Hall, Auburn, 7:30 p.m.

ROCHESTER BUSINESS INSTITUTE

SALUTES

The Business Men and Women of TOMORROW

DURING

AMERICAN EDUCATION WEEK

November 8th to 14th

Rochester Business Institute congratulates the students, instructors and officials of all schools for their respective achievements in modern education. In observing American Education Week, the Institute reflects on its own responsibility in teaching. We are mindful of our duty to offer students the best possible facilities and instruction. We are equally mindful of our obligation to the community: Providing a dependable source of well-trained young men and women to assume their rightful places in business and industry.

R.B.I.

ROCHESTER BUSINESS INSTITUTE

serving the business community since 1863