



OFFICE OF
THE DIOCESAN SUPERINTENDENT OF SCHOOLS
50 Chestnut Street • Rochester 4, N.Y.

SCHOOL ENROLLMENT
October 1, 1961
ELEMENTARY SCHOOLS

SCHOOLS	1960	1961	Gain	Loss	Rel. Lay Teachers
Sacred Heart Cathedral Academy of the Sacred Heart	1,360	1,346	..	14	21 6
Annunciation	123	127	4	..	9 7
Blessed Sacrament	283	355	72	..	5 3
Christ the King	789	770	..	19	12 6
Corpus Christi	329	384	55	..	6 4
Guardian Angels	420	424	4	..	8 2
Holy Angels	184	184	3 1
Holy Apostles	16	17	1	..	1 1
Holy Cross	701	710	9	..	12 5
Holy Family	821	819	..	2	13 5
Holy Ghost	829	835	6	..	14 4
Holy Redeemer	386	405	19	..	7 3
Holy Rosary	602	563	..	39	13 3
Immaculate Conception	1,039	916	..	123	18 6
Most Precious Blood	352	322	..	30	6 3
Mother of Sorrows	215	201	..	14	4 4
Nazareth Hall Cadet	805	813	8	..	11 6
O. Lady of Good Counsel	174	178	4	..	9 1
Our Lady of Lourdes	572	548	..	24	8 8
Our Lady of Mercy	543	588	45	..	11 8
Our Lady of Mt. Carmel	369	481	112	..	5 4
O.L. of Perpetual Help	454	490	36	..	8 2
St. Ambrose	436	405	..	31	7 2
St. Andrews	830	815	..	15	14 5
St. Anne	890	934	44	..	19 4
St. Anthony	437	444	7	..	9 3
St. Augustine	350	337	..	13	6 3
St. Boniface	826	820	..	6	13 5
St. Bridget	620	671	51	..	11 4
St. Cecilia	209	204	..	5	4 1
St. Charles Borromeo	669	664	..	5	11 4
St. Francis Xavier	924	913	..	11	17 2
St. George	642	615	..	27	13 2
St. Helen	83	89	6	..	4 4
St. James	541	568	27	..	9 7
St. John the Evangelist	802	762	..	40	13 1
St. John the Evangelist (Greece)	691	689	..	2	14 1
St. Joseph	895	903	8	..	14 6
St. Joseph Villa	231	217	..	14	5 2
St. Lucy	75	68	..	7	5 1
St. Margaret Mary	174	165	..	9	4 1
St. Michael	657	630	..	27	11 6
St. Monica	429	480	51	..	10 5
St. Peter and Paul	1,048	1,031	..	17	20 4
St. Pius X	490	452	..	38	10 2
St. Salome	386	423	37	..	5 4
St. Stanislaus	453	447	..	6	8 1
St. Theodore	747	710	..	37	13 4
St. Theresa	424	442	18	..	5 4
St. Thomas	167	160	..	7	4 1
St. Thomas More	859	858	..	101	15 5
School of the Holy Childhood	376	338	..	38	6 2
	84	83	..	1	2 1
AUBURN					
Holy Family	524	536	12	..	11 1
Sacred Heart	326	336	10	..	5 4
St. Anthony	161	158	..	3	4 1
St. Alphonsus	873	837	..	36	12 8
St. Francis of Assisi	482	460	..	22	8 2
St. Hyacinth	398	372	..	26	7 2
St. Mary	381	417	36	..	6 6
SS. Peter and Paul	138	147	9	..	3 3
AVON					
St. Agnes	318	330	12	..	5 3
BATH					
St. Mary	120	206	86	..	4 1
BROCKPORT					
Nativity, E. V. M.	371	330	..	41	6 3
CANANDAIGUA					
St. Mary	519	539	20	..	8 4
CLYDE					
St. John	317	317	7 3
CORNING					
St. Mary	385	381	..	4	7 2
St. Patrick	333	330	..	3	6 2
St. Vincent DePaul	378	397	19	..	7 2
DANSVILLE					
St. Mary	397	407	10	..	7 3
EAST ROCHESTER					
St. Jerome	531	537	6	..	8 5
ELMIRA					
Our Lady of Lourdes	335	400	65	..	5 4
St. Anthony	408	360	..	48	7 2
St. Casimir	347	353	6	..	7 2
St. Cecilia	189	188	..	1	4 1
St. Mary	740	741	1	..	13 4
St. Patrick	425	403	..	22	9 2
St. Peter and Paul	243	222	..	21	7 1
GENEVA					
St. Francis DeSales	672	706	34	..	11 5
St. Stephen	795	777	..	18	11 6
HENRIETTA					
Good Shepherd	283	205	..	78	4 4
HORNELL					
St. Ann	504	534	30	..	8 3
HORSEHEADS					
St. Mary	182	250	68	..	4 1
ITHACA					
Immaculate Conception	655	678	23	..	10 5
LIMA					
St. Rose	165	160	..	5	4 1
MOUNT MORRIS					
St. Patrick	225	200	..	25	5 2
NEWARK					
St. Michael	507	555	48	..	10 4
OWEGO					
St. Patrick	246	248	2	..	5 1
PALMYRA					
St. Anne	81	81	3 3
PENFIELD					
St. Joseph	301	351	50	..	6 1
PENN YAN					
St. Michael	280	280	5 2
PERKINSVILLE					
Sacred Heart	64	65	1	..	3 3
PITTSFORD					
St. Louis	557	593	36	..	9 6
SENECA FALLS					
St. Patrick	528	533	5	..	8 4
SPENCERPORT					
St. John	334	350	16	..	5 2
WATERLOO					
St. Mary	280	291	11	..	5 3
WAVERLY					
St. James	264	260	..	4	4 3
WAYLAND					
St. Joseph	249	262	13	..	8 2
WEBSTER					
Holy Trinity	492	514	22	..	7 5



Ups and Downs in Life

This priest spends a good share of his time going up just to come down — he's paratroop chaplain Father John McCullagh of Brooklyn, a member of the 1955 ordination class of St. Bernard's Seminary. (U.S. Army Photo)

S. Africa Apartheid Threatens Schools

Durban — (NC) — South Africa's newly elected Nationalist government has decreed operating as many schools as possible. "Our attitude in the past has always been that parents of Non-Catholics may send their children to our schools if they wish," the Archbishop said. "The government's idea of Bantu education is that it must be a single pattern—the pattern laid down by the Bantu Education Act. Some Catholic mission schools may have to close and some Catholic African teachers will be followed by eight years of the passage of the Bantu Education Act, which over a five-year period reduced to nothing the government control over education for the Negroes as essentially 100 per cent of teachers of complete racial separation or school maintenance.

WEST WEBSTER

St. Rita	748	773	25	..	9 6
	45,698	46,233	1,567	1,032	870 320

HIGH SCHOOLS

SCHOOLS	1960	1961	Gain	Loss	Teachers	Rel. Lay
Academy of the Sacred Heart	94	83	..	11	7 5	
Aquinas Institute	1,362	1,367	5	..	45 14	
Holy Angels School	9	10	1	..	1 1	
McQuaid Jesuit	907	923	16	..	27 21	
Nazareth Academy	1,391	1,591	200	..	64 9	
Our Lady of Mercy	967	1,016	49	..	39 5	
St. Agnes	844	880	36	..	32 7	
St. Andrew's Seminary	212	202	..	10	8 2	
St. Joseph's Commercial	198	199	1	..	4 4	
Mt. Carmel, Auburn	611	652	41	..	23 9	
St. Michael's Juniorate	61	51	..	10	7 1	
Conesut	724	727	3	..	25 8	
Notre Dame, Elmira	336	386	50	..	15 2	
DeSales, Geneva	29	
Immaculate Heart of Mary Seminary, Geneva	101	107	6	..	9 2	
St. John's Atonement Seminary, Montour Falls	145	149	4	..	12 1	
Padua, Watkins Glen	
	7,991	8,253	322	60	318 58	

SCHOOL POPULATION SUMMARY

All Elementary Schools in the Diocese	46,233
All High Schools in the Diocese	8,253
Total number of Students in the Diocese	54,486

INCREASES OVER 1960

Elementary Schools	535
High Schools	262
	797

★ VOTE FOR ★
THOMAS J. MEAGHER
DEMOCRATIC
CANDIDATE
FOR
JUSTICE OF THE
SUPREME COURT



7th Judicial District
(Counties of Cayuga, Livingston, Monroe, Ontario, Seneca, Steuben, Wayne, Yates.)

- Member of Blessed Sacrament Parish.
- Member 4th Degree, Knights of Columbus.
- Former Judge of Monroe County's Children's Court.
- Practicing attorney for over 20 years.

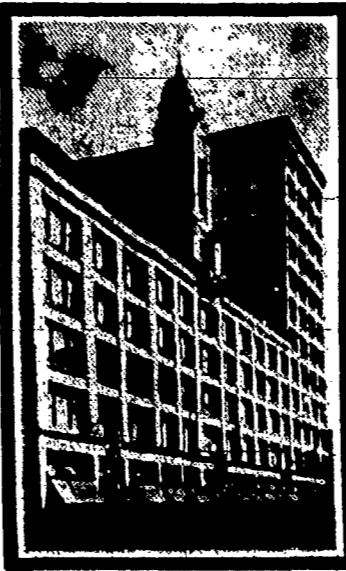
★ EXPERIENCED ★ QUALIFIED

93rd
ANNIVERSARY

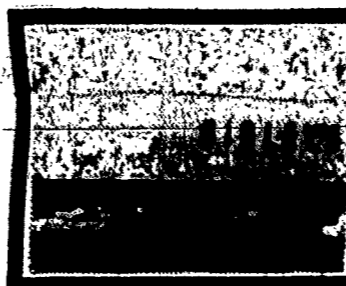


Sibley's
STOREWIDE
ANNIVERSARY
SALE

ends Saturday, Nov. 4



Downtown

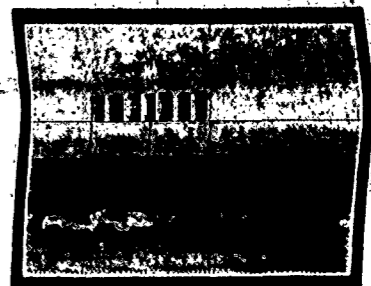


Irondequoit

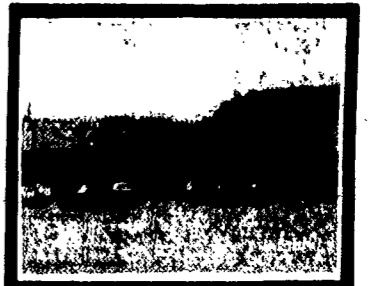


Eastway

- DOWNTOWN
- IRONDEQUOIT
- EASTWAY
- SOUTHTOWN
- NEWARK



Southtown



Newark

men's T-shirts, shorts
reg. 1.50 ea. 6 for 5.85

chrome-plated garment rack
8.98

T-Shirts of 94% cotton, 6% Dacron polyester, sizes S, M, L, XL. Combed cotton wash 'n' wear boxer shorts in white or patterns, 30-44. Sibley's Men's Furnishings, Street Floor and all branches.

Rigid slide-and-lock construction — assembles without tools. 42" wide, 61" of hanging space plus 4 utility hooks, 2 swing-bars, casters. Sibley's Notions, Street Floor and all branches.

automatic clock radio
reg. 33.95 23.88

Helen Harper sweaters
4.99

RCA Victor clock radio lulls you to sleep, turns itself off and on automatically. Wakes you to music or buzzer. Charcoal, pink, nugget or white. Sibley's Radio and TV, Fourth Floor and Southtown.

Wonderful assortment! Classic, dressmaker, bulky knits and novelty styles in soft wool and fur blends, Orlon acrylics, textured nylons. Sizes 34-40 in the group. Sibley's Budget Sportswear, Street Floor and all branches.

Berkshire Kantrun tights
women's reg. 2.95 2 prs. 4.99
children's reg. 2.50 2 prs. 3.99

six-way lounge pillow
reg. 5.99 4.99

Smooth-fitting, fine quality tights in black, royal, beige or red. Sizes Small, medium, tall. Hosiery, Street Floor and all branches.

Handsome Fonda fraile cover (60% rayon, 40% cotton, kapok filling. Rose, turquoise, gold or beige. Bed rest pillow in same cover, color and filling, reg. 12.99, 10.99 Sibley's Art Goods, Third Floor and all branches.

infants' corduroy togs
reg. 2.98 1.99

sturdy folding play yard
sale priced: 14.85

Creepers and coveralls of unusually fine quality for active wear. Pink or blue for girls, red or blue for boys. Gripper crotch. M and L sizes. Sibley's Infants' Wear, Third Floor and all branches.

Famous make play yard, high off the floor out of drafts. Wax birch finished hardwood with safe red teething rail, plastic heads on the side to amuse the baby. Sibley's Infants' Furniture, Third Floor and all branches.

Phone Order Department is open 8:30 A.M. until closing time to serve you.