

Typical cubicle for patients in new division.

Surgery preparation room is located between two operating rooms.

New Surgical Division Completed At St. Joseph's

Construction is completed on the new Surgical Division at St. Joseph's Hospital, Elmira. The unit occupies the space of both Surgical 6 and Medical 6 as well as the entire outside promenade area which has been enclosed in this expansion program.

In the modernization plan, the seventh floor of the surgical building provides storage space for equipment essential in the air conditioning and air cooling of the sixth floor.

Friends are invited to visit the new facilities at open houses planned for August 8 through August 13. Members of the Hospital's Women's Auxiliary will serve as hostesses each of these days from two to four in the afternoon and from seven to nine in the evening.

A NEW OPERATING room suite, consisting of three major rooms, three minor rooms, a bronchoscopy room, cytology room, scrub-up and sub-sterilizing rooms between every two operating rooms, doctors' and nurses' lounges, and a nurses' station is located on Surgical six.

Each operating room has piped-in oxygen and suction, conductive ceramic tile floors and life on the walls, extending from the floor to the ceiling. Various colors of tile have type light, mounted on the ceiling.

been selected for the rooms—green, peach, jaquot, pink, spruce, and gray. The entire operating room suite is air-conditioned.

A piped-in recovery room is located adjacent to the Operating Room Suite. An isolation unit is provided in this attractive, restful-green, air cooled room. Piped-in oxygen and suction is also an added feature.

All the existing rooms on Medical six have been renovated and new rooms have been added to make a total of twenty-eight beds for this Surgical Unit. Each room is equipped with piped-in oxygen and suction, built-in closets and dressers, new heating system located in acoustical ceilings, telephone and television sets with cable.

THE NURSES' station has a seating capacity of twelve. A head nurse and conference room and a medicine room are located next to the nurses' station. A new clean, and solid utility room adjacent to the nurses' station will save many steps.

The ultra-modern, in-bed Intensive Care Unit, located at the north end of the Medical building, provides a private room with piped-in oxygen and suction for each patient. A new ing from the floor to the ceiling. Various colors of tile have type light, mounted on the ceiling.

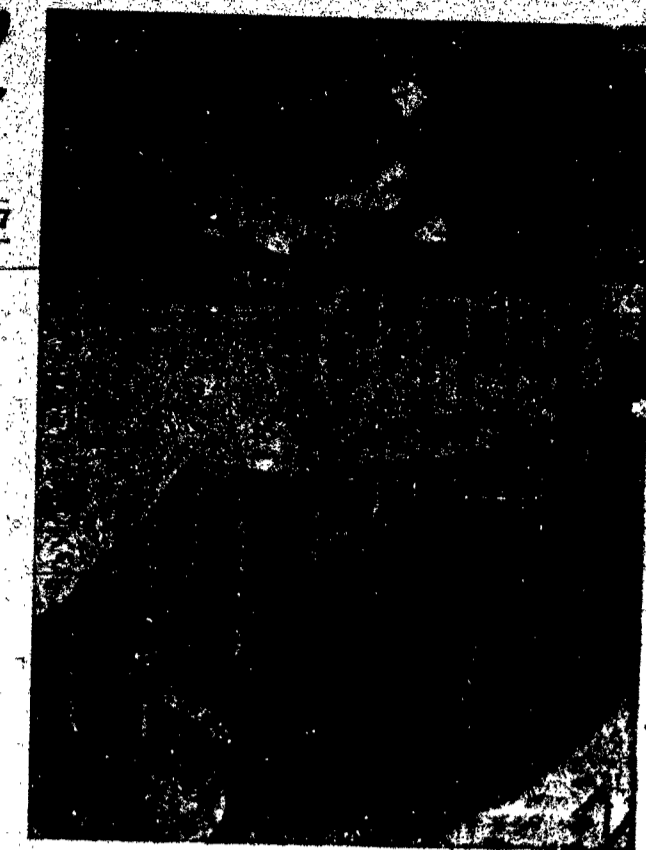
ing over each patient's head, extends from the head to the foot of the bed. The entire unit is air-conditioned.

An isolation room has also been included in this unit. Viewing windows are located between each patient's room, from the nurses' station and from the diet kitchen.

The visitors' waiting room, near the Intensive Care Unit, has a television, telephone and coffee canteen. A conference room for doctors and patients' relatives is located near the waiting room.

DURING THE week of August 14, the operating room personnel will move equipment and supplies to the sixth floor. The operating rooms are now located on the fifth floor of the surgical building. Present plans include the opening of the new Intensive Care Unit during the same week. On or about September 6, patients will begin to be admitted to the Surgical Patient Area in the newly constructed division.

Leo E. Conzidine and the firm of Conzidine and Haskett was the architect for the construction. The firm of Anthony J. J. Bourke, M.D., Hospital Consultants of New Rochelle, New York, assisted with technological details.



Nurses check equipment in Intensive Care Unit.

Hanly Appointed 75th District Head Of KC

CORNING — T. V. Hanly, an active member of Corning Council, Knights of Columbus, is the newly appointed deputy of the KC 75th District, according to an announcement made at a regular meeting of the local Council.

Conrad Grand Knight Alfred Conzidine said the appointment was made by New York State Deputy John Symonds. In his new job, Hanly will exercise executive supervision over the district which includes Corning, Elmira and Watervliet.

HERNARD MILLER was appointed general chairman for the 50th Anniversary Program by Grand Knight Conzidine and Rev. Theophane Murphy, chaplain. Miller announced the chairman for the divisions of the program. They are:

Catholic Activities — Thomas Finerman and John Gubernot; Council Activities — Vincent Caracci and Joseph Daley; Fraternal Activities — Harry Belardini and John Starnes; Membership Insurance — Thomas Keegan; Public Relations — William Marston, and Youth Committee — William Rosetti and Donald Curry.

Following the council meeting, the Home Association met and elected four new members to the Board of Directors: Joseph Dunbeck, Edward Griffin, George Horne, and Albert Duval.

Dudley McLaughlin, Charles Houston and Joseph McIntyre were re-elected to the board. Prior to the elections, Vincent Welch and McLaughlin had outlined the duties and responsibilities of the Board of Directors.

Benedictine Nun, Elmira Given Perpetual Vows

Rev. Mother Miriam, O.S.B. (Miss Mary Benedict) daughter of Mr. and Mrs. Clifford C. Benedict of 601 West Hill Street, Elmira, pronounced her perpetual vows and received the consecration of a virgin at Regina Laudis Monastery, Bethlehem, Connecticut, on July 2.

THE CEREMONY of the consecration of a virgin is one of the most ancient rites of the entire liturgy of the Church. The rite is both Roman and primitive in its origin, and was first used in the United States in 1948 by this same community of contemplative Benedictine Nuns.

Presiding at the ceremony was the Right Rev. John F. Hackett, auxiliary Bishop of Hartford, Conn.

Among the assisting clergy were Very Rev. Mgr. James Lacey of Hartford, Very Rev. Damasus Wisnes, O.S.B., prior of Mt. Saviour Monastery, Elmira, Rev. Fathers Raphael Humbeck and Maria Lasch, Germany; Samuel Steiman, O.S.B. of St. Andre, Belgium; Benedict Bismahan, O.S.B. of St. Anselm's Priory, Washington, D.C.; Augustine McGowan, O.S.B., M. M. Saviour, Elmira; Plus Liu, O.F.M. of Formosa; and Rev. Charles Lynch and Rev. Thomas Mullen of Hartford.

30 High School Girls To Make Cenacle Retreat

The first retreat League will send 30 high school girls on a retreat to Our Lady of the Cenacle Convent in Rochester, the weekend of Aug. 12-14.

They are selected by the local pastors and the Chaplain of Notre Dame High School as potential young adult leaders, on the basis of their social, scholastic and spiritual leadership.

The retreatants are required to attend two conferences given by Reverend Moderator Bernard J. O'Brien, assistant

Information can be obtained by calling Miss Mary E. Fitzgerald, Rt. 27137, Miss Florence K. Hughes, Rt. 2-7159 or Mrs. Joseph Barozzi, Rt. 2-8318.

THE SMITH-CORONA 6MD

THE WORLD'S LOWEST PRICE, fine quality Adding Machine. Perfect for tax work, budget accounting, figure work of all kinds.

Unwed Mothers Receive Aid At Family Center

By AUDREY LINK

of such homes are nearby. girl so desires but generally the time she goes to the agency this possibility has already been decided.

THE POLICY of placing a baby in temporary or long term foster care is suggested, unless she is able to make her own decisions, or if she chooses to place her baby in a carefully selected home for adoption. The agency will also assist her in arranging to keep her child if she wants to.

Surrender is encouraged if it is thought best for the girl and her child. The surrender of the baby is not asked for until several weeks after birth.

The case worker will go to the home and talk to the parent and the girl trying to straighten out any strange situations. She will also talk to the putative father unless the girl requests her not to. He may be asked for financial assistance or be persuaded to marry the girl.

The need for information about the father's history such as health and nationality for future adoptive placement is necessary.

When the child is born, the agency takes the baby from the home or hospital and places it in a foster home. The foster parents are paid for the period that the child is in their care. Supervision is maintained on the baby while it is in the foster home.

INFANTS FROM birth to one year of age are given routine checkups every six weeks by Dr. Arthur D. Smith, clinic director.

(Continued on page 8)

Dedication Day Bazaar Listed At Monastery

St. Saviour Monastery, Elmira, will celebrate its annual Dedication Day with a Bazaar on Sunday, August 14. A meeting of the committee was held on August 3.

PROGRAM FOR Sunday, August 14, begins with High Mass at 11 a.m. After Mass, the booths will be open and lunches and snacks will be served all day at the Tea Room.

There will be Baked Goods and Candy Stands, and the Bazaar hand made items and favors of all kinds. Religious articles, rosaries, statues, books and cards will be available in the Mt. Saviour Shop.

There will be portrait sketches, games of all kinds, pony rides and conducted tours of the Chapel of Our Lady Queen of Peace.

Vespers and Benediction of the Blessed Sacrament will be held at 4:30 p.m.

Sheehan's WHITE SALE

"AMC" Sheets
COTTON MUSLIN

72"x108" or twin fit, reg. \$1.99
..... 1.99

81"x108" or full fit, reg. \$2.19
..... 1.69

Case, 32"x46", reg. 50¢ 40¢

COTTON PERCALE

72"x108" or twin fit, reg. \$2.19
..... 1.89

81"x108" or full fit, reg. \$2.39
..... 2.19

Case, 32"x38 1/2", reg. 60¢ 48¢

Buy Two Pillows and Save!

10% down, 90% crushed duck feathers 2 for 3.79

"Quasi" down (white feather and white fiber) 2 for 8.00

50% down, 50% duck pillows 2 for 12.00

100% down pillows 2 for 18.00

SHEEHAN'S BEDDING . . . Lower Level

Mattress Pad and Cover Combination

Contour twin 3.99

Contour full 4.99

Real twin 2.99

Real full 3.99

The House of Quality Home Furnishings

Fine Furniture by BIGELOW

CONANT BALL RUGS and BROADLOOM

DREXEL EASY SPIN DRIERS

HALLAGAN KARASTAN RUGS

JAMESTOWN LOUNGE FRIGIDAIRE APPLIANCES

J.P.M. Sullivan

ELMIRA, 115 E. Water St. CORNING, 76 E. Market St.

Put Pepsi on your shopping list!

Refreshes without filling.

SOFTED BY

Pepsi-Cola Elmira Bottling Co.

WE'RE APPOINTING

PEPSI-COLA CO. NEW YORK

FEATURING BETTER SHOES FOR EVERY MEMBER OF THE FAMILY

For Men For Children For Women

FRISMAN Polli Parrot MARACLE TREAD

WOLVERINE TWIN TRED

RANDOLPH AMERICAN JARROUS CASUALS

SAVINO'S SHOE STORES

WE SPECIALIZE IN

WE ARE OPEN

222 E. STATE ST. CORNING, N.Y. 13612

NOW AN ADDING MACHINE DESIGNED FOR BOTH HOME AND OFFICE

THE SMITH-CORONA 6MD

The world's lowest price, fine quality Adding Machine. Perfect for tax work, budget accounting, figure work of all kinds.

222 E. STATE ST. CORNING, N.Y. 13612

L. W. HASTINGS