

Call  
**BAMANN**  
For Insurance



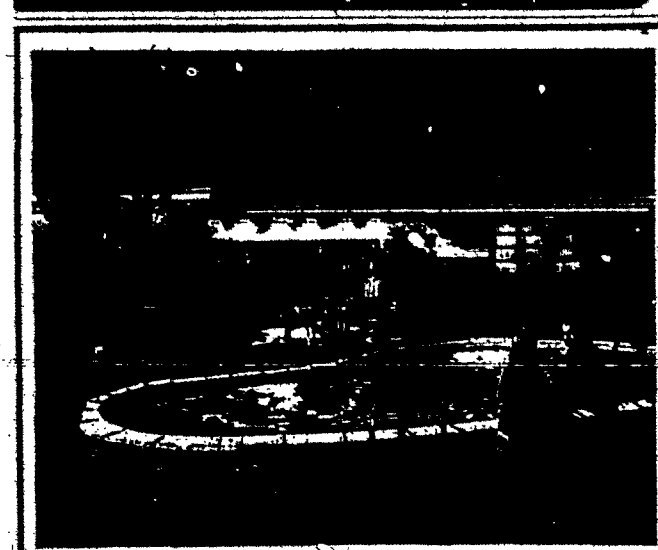
**LEWIS NEARY**  
It's a gamble you needn't take when there's an expert who can pack your household goods, move them to your new home or store them in the finest fireproof warehouse in your community... often at less cost than it would take to replace damaged goods. Free estimates on request.

**BLANCHARD'S**  
Moving & Storage  
Rochester's leading movers  
RO. 2-5980 320 Broad St.

REPRESENTING  
**ALLIED VAN LINES, Inc.**  
No. 1 on U. S. Highways No. 1 in Service No. 1 in your community

**SAVE \$\$\$**  
Cut Rate Prices On Beverages  
THE HOUSE OF IMPORTED BEERS  
NEW YORK STATE BEER AND ALE  
• Fitzgerald • Sirion Pure  
**SOFT DRINKS \$1.40** Per Case  
We also carry 4-8-12 oz. SIZES  
TOM COLLINS MIX • QUININE WATER  
**ART HACK, Beverages**  
Shelford Rd. at Empire Blvd.  
Open Tuesday thru Saturday 9 to 5 - Closed Sunday and Monday

**Food Service Equipment & Supplies**  
for SCHOOLS • CHURCHES  
HOTELS • RESTAURANTS  
CAFETERIAS • HOSPITALS  
Let us help you plan your Kitchen and Dining Room ENGINEERING AND LAYOUT SERVICE.  
**The American Specialty Company, Inc.**  
Rochester's Leading Supply House  
FREE PARKING IN REAR OF SHOWROOM  
213-291 Central Ave. BAler 5-2400 • Rochester 5, N.Y.



**YOUR NATION OF LIGHT... AND POWER!**

40% of all the electricity in the world is used in the U. S., most of it supplied by hundreds of independent electric companies like yours.

One of America's wonders to foreign visitors is the wealth of electricity we put to work in our homes, on our farms, in our jobs.

We use more light and power than the next six nations together—three times as much as the Russians—and we keep on using more all the time. On the average, you use twice as much as you did just ten years ago and pay less for it per kilowatt-hour.

America's independent electric companies have doubled their electric supply every ten years, and will double it again in the next ten. Because the companies will put up the money for this growth, you won't be taxed to pay for it.

Nevertheless, some people still urge the federal government to build whole power systems that all Americans would be taxed to pay for. That's completely unnecessary—the independent electric companies are ready and able to supply all the low price power people can ever need!

Keep these facts in mind the next time you hear someone talking about the "advantages" of federal government electricity.

89 East Ave. LOcust 2-7000

ROCHESTER GAS RGE ELECTRIC



**A Family Of Scholarship Winners**

THIRD SCHOLARSHIP winner to Nazareth College in the same family is Mary Rich, left, pictured with her mother, Mrs. James C. Rich, and her sister, Kathleen, both former scholarship winners, as they glance at a college yearbook. Mrs. Rich received a N.Y. State Regents Scholarship to Nazareth College where she received her B.A. in English. She is now a social case work supervisor at Monroe County Welfare Department. Kathleen graduated from St. Agnes High School in 1958 and is using her Regents Scholarship to major in English at Nazareth. Mary, who graduated this year from St. Agnes will study nursing at Nazareth with her Regents Scholarship. The family resides at 1352 Mt. Hope Ave. and are members of St. Anne Parish.

Pakistani Bishop  
Karachi, Pakistan — (NC) — A U.S. priest has been named Bishop of Multan, Pakistan, by His Holiness Pope John XXIII.

**Social Workers Unit Honors Miss Richardson**

The Medical Social Work Section of the National Association of Social Workers, Rochester Chapter, has presented a citation to Miss Joyce Richardson, junior at Nazareth College in recognition of her achievement in winning one of the first annual scholarship awards given in the field of Medical Social Work by the National Foundation.

The National Foundation (formerly the National Foundation for Infantile Paralysis) has become quite concerned about the shortage of personnel in certain professions dealing with the care of chronically ill people.

In order to help encourage promising young people into these needed fields of work, the Foundation has established 100 scholarships per year in the United States, in each of these fields: Medicine, Medical Social Work, Nursing, Physical Therapy, and Occupational Therapy.

**EACH SCHOLARSHIP** awards the selected student \$500. per year for four years. In the case of Medical Social Work which requires a two year course of postgraduate training, this means the student is aided through the last two years of college and both years of graduate training.

Miss Richardson's interest in the field of Medical Social Work developed as a result of her observations while working in a hospital during summer vacation as a Nurse's Aide. She realized that in the complex setting of modern life, the kind of individual attention which the well-trained social worker is able to give to the patient helps to overcome personal or social obstacles which may stand in the way of the patient's utilizing the array of medical services available to him.

Miss Richardson's citation was presented at a Tea held Thursday, June 3 at the home of the chairman of the Medical Social Work Section, Mrs. Franz Reichman, 2491 Highland Ave.

THE PRESENTATION was made by Mrs. Betty Hallett, Director of the community project.

**Shop Save to Weider**  
BUY Direct FROM OUR WAREHOUSE

**CLOSET COMBINATION**  
Free standing combination in gleaming chrome. High quality, with white seat and cover. **\$29.99**

Home Owners • Cottagers • Landlords  
**NOW'S THE TIME TO FIX UP & SAVE ON PLUMBING SUPPLIES**

**30 GAL. WATER HEATER**  
Fully automatic, glass lined, 18 year guarantee. **\$84.50**

**WEIDER Plumbing**  
495 S. CLINTON PARK FREE ESTIMATES

**The Date Book**

**Mission Benefit**  
Fifth annual card party for the benefit of Rev. Michael F. Kavanagh S.J. will be held at Murphy and Nally's Restaurant, 584 Chitt Ave. on Saturday evening, June 1.

**Capri Dance**  
Capri Club dance to be held at Columbus Civic Center ballroom, June 4 from 9:30 to 12:30. Johnnie Opone and his orchestra. Members \$1; non-members \$1.50. Refreshments.

**LCBA**  
The Ladies Catholic Benevolent Association of East Rochester met last evening, June 3, in St. Jerome parish hall.

**Archconfraternity**  
Member of the Archconfraternity of the Holy Family of St. Joseph's Church, will receive Holy Communion at the 7:30 o'clock Mass Sunday, June 3. Breakfast and conference conducted by Rev. Joseph Winicki, O.S.S., will follow in the church hall. Solemn reception of new members to precede the conference. Any new member who has attended at least three Masses in the past year will be received. Breakfast Committee: Miss Marie Zimmerman, chairman assisted by Mesdames Adolph Winterroth, Julius Noll, Chester Gardin, Edward Eber. All friends and members of Guild are invited.

**Garden Party**  
St. Elizabeth Guild Garden Party to be held Monday, June 13 at 12:30 p.m. at Guild House, 1475 East Ave. Mrs. Fred Kunn, chairman assisted by Mesdames Adolph Winterroth, Julius Noll, Chester Gardin, Edward Eber. All friends and members of Guild are invited.

**Women Elect Mrs. Doell**

Genesee—Mrs. George Doell is the new president of the Rotary Society of St. Stephen's parish for 1960-61 succeeding Mrs. C. William Parker.

Electron was held at a dinner meeting recently in the American Legion Home. One hundred and thirty members were present.

Other officers elected were: Mrs. George Doell, president; Mrs. M. H. McLaughlin, secretary; Mrs. Robert Eberhart, treasurer.

**MISS REGINA SWENEY** was toastmistress for the occasion. The retiring president, Mrs. Parker, was presented a sterling silver rosette as a gift from the society.

The Rev. Joseph Egan of St. Bernard's Seminary, Rochester, was principal speaker. He spoke on the subject of "Tolerance" and discussed the articles of the Constitution and Declaration of Independence.

Mrs. Dorothy Walker was chairman of the dinner assisted by Mrs. Orlando D. Augulino, Mrs. John Wimmer, and Mrs. Robert Eberhart.

The Rev. Raymond P. Nolan, pastor of St. Stephen's Church, and the Rev. John A. Duffy, spoke briefly.

**Scouts Sponsor Annual Banquet**

Auburn—The Girl Scout and Brownie Troops of St. Alphonsus Church held their annual Mother-Daughter Banquet Tuesday, May 24, in the school. The fathers of the girls helped in the serving of the dinner.

**THE REV. GERALD T. CONNOR**, assistant pastor of St. Alphonsus, spoke. Special guests of honor were the Sisters of St. Joseph who teach at St. Alphonsus School and Mt. Carmel High School, and Mrs. Joseph A. Barry who has served since the inception of Scouting in the parish in many fields of adult leadership.

Mrs. Edward Koin was toastmaster, Mrs. Andrew H. Lawford was general chairman.



ROCHESTER COCA-COLA BOTTLING CO., A. L. ANDERSON, ROCHESTER, NEW YORK

**NOW ARE LOWER THAN EVER**  
**EXPANSION SALE**  
ALL USED CAR PRICES REDUCED AS MUCH AS **45%**  
— 2 MG LOCATIONS —  
1540 LAKE AVE. opp. Kodak Park  
256 LAKE AVE. In Automobile Row  
**PIEHLER PONTIAC**  
1540 LAKE AVE. 256 LAKE AVE.  
SEE THE MANY FINE BARGAINS ON DISPLAY TODAY  
ALL SALE PRICES ON WINDSHIELD  
GENEROUS ALLOWANCES

**PROFESSIONAL PAINTERS CALL**  
**"Greatest House Paint Ever Developed"**  
**PVA MURAL-TONE**  
The Miracle Latex Paint  
A product of The WARD Co., makers of SPACKLE  
Amateur or expert, you get a professional long-lasting job every time. Here's why—  
\* **MOST TESTED**—PVA MURAL-TONE's been used and proved for 5 years. That's 5 years longer than other LATEX PAINTS. It SAUST be better—when it's 5 years ahead of the entire industry!  
\* **MOST DURABLE**—Shed your home on plastic that lasts for years. Shields it from weather, corrosion and fire. It's the only paint that rejects dirt that collects on ordinary paint.  
\* **LASTS LONGER**—PVA MURAL-TONE is the one LATEX PAINT that stands up to the harshest weather. HOUSES painted with PVA MURAL-TONE's 5 years old look like new. There's the kind of long-lasting protection you need.  
\* **EASIEST TO APPLY**—Come on in a flash... so easy to handle it comes the way out by itself. No brush, roller or spray—whatever you like.  
\* **WASHES OFF**—Wash off dirt and stains with soap and water. You don't have to scrub. It's the only paint that washes off so easily.  
\* **MOST VERSATILE**—Recommended for painting every surface. You don't have to scrub. It's the only paint that washes off so easily.  
\* **FASTEST DRYING**—Dries fast on any surface in just 20 minutes. No time for dirt and insects to get in touch with it.  
\* **MOST RETENTIVE COLOURS**—PVA MURAL-TONE's bright colors and brilliant brightness change the way. Only PVA MURAL-TONE has 5 years proof of that.  
\* **WHITEST WHITE**—MURAL-TONE's white is a brilliant white guaranteed to stay that way.  
\* **WATER-PROOF**—MURAL-TONE was the first of the "breathable" paints that allow water vapor and interior moisture to escape without harm to your walls. That's why it doesn't blister, peel or crack—ever!  
\* **PAINT ANYTHING**—Rails, doors, or any surface that needs a new coat. PVA MURAL-TONE goes on over damp surfaces—steam in mind.  
\* **STAIN-STOP ANSWERS**—Have any tough stains? With MURAL-TONE Touch-up—done later—stains are invisible.  
Check PVA MURAL-TONE's 5 year guarantee yourself. ASK YOUR DEALER for the address of nearest dealer with PVA MURAL-TONE stock. See the spots of "the greatest house paint ever developed."

**DEALERS**  
ROCHESTER ART SUPPLY CO. 101 West Main St.  
HUMPHREYS PAINT STORE 113 Main St. E.  
ARROW MATERIALS CORP. 275 N. Union St.  
EILES COMPANY 24871 Danby Ave.  
MATHews & FIELDS 120 Stonewood Ave.  
FAIRPORT HARDWARE CO. 20 West Street Fairport, N. Y.  
TANCZACK HARDWARE 1831 Hudson Ave.  
ATLANTIC MILLWORK CO. 2715 West Henrietta Rd.  
VILLAGE APPLIANCE CO. 219 S. Main St. E. Rochester, N. Y.  
WARNE BIRMAN CO. 1523 W. Ship Road  
MIDGE LUMBER CO. 612 Hollibaugh St.  
BURTS BUILDING SUPPLY CO. Perry, N. Y.  
**DISTRIBUTORS**  
R. C. Sheehan Paint Co., 1400 St. Paul St., CO. 6-1500