

Watching The Screen

Late TV Shows

By RAY SMITH

After a hard day in the mines one may decide to catch the late movie on TV. Ah, a little relaxation; slippers on, pipe lighted, and a cold glass of milk at your side. Sometimes, after about a hour and a half, the viewer wishes he went to bed before he developed a case of shattered nerves. Oh, how some stations can make the late movie a real workout with those never-ending commercials.

This is just one man's opinion but I may not be alone. Some of the things that ruin the late movie are the commercials, some are exasperating, some amusing.

Gas Furnace Check-Up
Complete inspection including: safety, adjustment, cleaning if needed.
Metzger & Brayer Co.
415 LYLE AVE. Since 1898
GL 3-0421

You might recall that in Oliver's "HAMLET" the camera swoops and swirls and comes to rest on a close-up of Oliver's head, face turned from the camera, as "To be, or not to be..." begins on the sound track.

One cutter at a telecasting station decided to put a commercial break at this point. After a flood of advertisements Oliver delivered the famous lines — but the spell had been broken.

Film cutters at TV stations are not always the ones to blame. Their main function is a fine cutting places for commercials and to shorten a feature to the allotted time. It's their job and they have to make a living too, you know. But the results —

In the whodunit "AND THEN THERE WERE NONE" ten ill-assorted characters get bumped off one by one on a lonely island. It runs about 96 minutes. Many stations show it for 82 minutes (90 minus 8 for commercials). Well, how to cut it? It's simple. C. Aubrey Smith (wonderful name) doesn't get murdered — he simply disappears.

In the original print of MGM's "BATAAN" Kenneth Spencer dies when a Japanese backhacks his skull. TV censorship thought this a bit too much for even late-night audiences. So, Mr. Spencer is last seen in battle knocking off of the enemy right and left.

Of course, these things are not new to veteran moviegoers who want to see a show for the second time when it appears on the late, late, late TV show. But, for the others, if you are watching a TV movie and thinking that it just doesn't seem like the original, well, that's life.

Things are pretty sad this week with the downtown houses in Rochester. With holdovers and new features, three theatres have "B" movies. The Palace Theater has for a second week "THE BEST OF EVERYTHING" for ADULTS ONLY. Considering all the facts, it's the best we can offer you in this week's column.

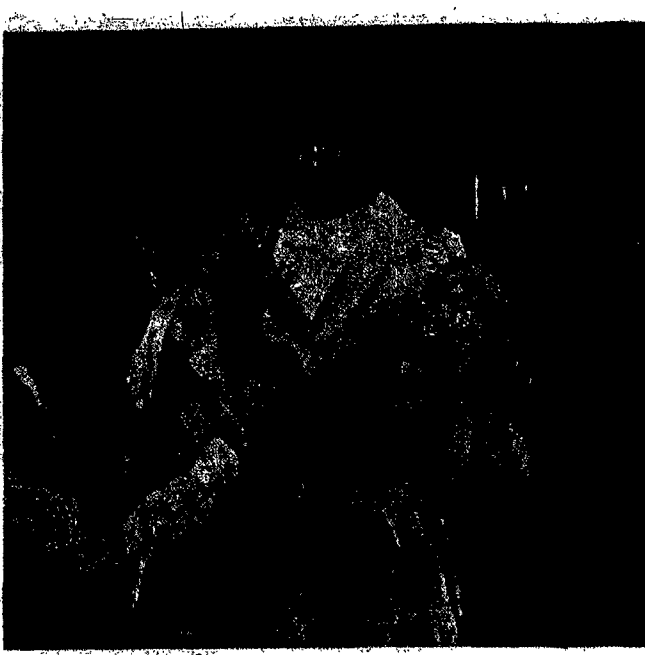
ELMIRA — ADULTS AND ADOLESCENTS will keep looking at their watches because it's "TEN SECONDS TO HELL" at the Colonial Theater over the weekend. The thoroughly enjoyable "FOR THE FIRST TIME" is at the Elmira Theater for the WHOLE FAMILY. But watch out on Wednesday. On that day starts the "B" movie, "A Summer Place." Best left unseen.

HORNELL — ADULTS ONLY should enjoy seeing Dean Martin and all in "CAREER" at the Majestic Theater. Attention Parents — a word of congratulations is due the management for their kiddie shows on Saturday afternoon. According to my listings they substitute a kids' movie for that afternoon when their regular show for that day is not judged just right for kids. A word of thanks never hurts anyone.

Priest Arrested For Catechism

Moscow — (RNS) — Father Nikolai Gillis, a priest in Lithuania, was sentenced to nine months' imprisonment for giving "illegal" religious instructions, the newspaper Soviet Lithuania reported.

The priest, who also was fined 15 per cent of his income, was accused of holding religious classes for children.



LIFE IN ROCHESTER will be presented in a pageant at St. Agnes High School on Monday afternoon. Trying out costumes for the presentation are Carole Proia, Marjorie Mac Lelland and Martha Slavin.

Off The Record

Winter Hits

By SUZANNE WEGG

The "Big Hurt" by Toni Fish, on Siret label is soaring to the top of the lists this week. The monotonous drone of the rhythmic section and equally monotonous melody plus the iron voice of Toni Fisher are just strange enough a combination to catch on.

From what I can gather from the garbled lyrics, the "Big Hurt" is all about someone who has gone away and the singer is subject to this so called big hurt until this someone returns. There are times when the melody seems to have nothing to do with the accompaniment — harmonically or otherwise.

It also sounds like it was recorded in a barrel. However, it's not rock 'n' roll. It does have a catchy bounce to it and it is certainly destined to join the army of really big ones.

Here's one that is so bad it's funny. "Running Bear" by Johnny Preston on Mercury. It starts out with an Indian type of ugg-a-wugg-a-wumms, then Johnny Preston steps in to narrate the sad story of "Running Bear," a brave who is in love with "White Dove," a maiden, but they can never marry because their tribes are at war with one another.

A FINE NEW album by one of the queens of song is "Songs By Burke And Van Heusen" by Lena Horne on RCA Victor. With the fascinating arrangements by Lennie Hayton and professional singing style of Lena Horne the album spells great from beginning to end.

IN THE CHRISTMAS department we have some wonderful, fresh, new, spirited albums this year which deserve mention.

"The Music Of Christmas" by Percy Faith on Columbia is a survey of some of the finest Christmas melodies. It is also one of the new programs of Christmas music that does not offend the words. So familiar are they, that they come to mind as the notes are played.

In each of these presentations, Percy Faith has attempted not only to convey the sure ring power of the songs, but to conjure up the time and atmosphere that produced them.

Some of the freshly new arranged carols on the album are: "Joy To The World," "Silent Night, Holy Night," "Deck the

'Land Of The Genesee' Set At St. Agnes High

Timon Club of St. Agnes High School under the direction of their moderator Sister Edwardine will present "The Land of the Genesee," an original program depicting the life of a city, and how that life came from a river, on Monday afternoon. Emelia Romanowski as, the "Spirit of the Genesee" will tell the story assisted by Sara McGovern as the "Spirit of the Forest," and Sheila Belli as the "Water Sprite of the Falls."

Roff Guild To Present 'Rainmaker'

THE PAGEANT shows four stages of development — 1. the land under the first rain, the purchase of the 100-acre tract by Colonel Rochester, Major Carroll, and Colonel Fitzhugh, Rochester from the time of the settlement until the end of the Civil War (in which Rochester played a large part); 4. the attraction of Rochester to people of other lands.

Members of the Rochester family will be played by Jean Soan, Martha Slavin, Carole Tommerman, Carole Proia, and Joann Bruckel.

Period costumes provided by the D.A.R. and period music provided by the St. Agnes High School Glee Club directed by Sister Joseph Ellen, will set the atmosphere for the early history story.

Among the early contributors to Rochester's cultural wealth to be portrayed are Mary Jemison, the "White Woman of the Genesee," Nathaniel Hawthorne, Daniel Webster, Bishop Bernard McQuaid, father of the parochial school system, and Miss Susan B. Anthony.

The play was first produced in October of 1954 and won great praise from the critics for its poetic touch and insight into the human heart. The setting of the play is the midwest during a time of paralyzing drought.

THE CAST includes Miss Jean Crittenden, a student at Nazareth College; James Bond, James Dumphy, Salvatore La Bella, Gerald Locklin, Ronald Magin and Richard Salamone, all students at St. John Fisher College. Rev. Leo Hezler, C.S.B., is moderator.

Previous presentations at St. John Fisher College included "Shadow and Substance," Le Bourgeois Gentilhomme, Twelve Angry Men, Time Remembered, and But Not Goodbye.

JOE MARY FALBO'S GRANITE COFFEE ROOM
• SUPPER • LUNCH • SNACKS
ROOM 1240 GRANITE BLDG.

Call BAMAN For Insurance

Dining Out?
Make it in the country's finest charcoal restaurant!
Featuring mouth-watering sirloin on a skewer... chunks of the most famous of all steaks, charcoal broiled. \$3.85

Hearth and Embers
at the
The Manor Hall
26 Clinton Ave. E.

Let Our Experience Be Your Guide
TRAVEL AGENCY
When about to travel consult our Authorized Agency on Steamship Lines—Air Lines Cruises—Hotels—Resorts
KALMBREISCH TRAVEL AGENCY
17 Clinton Ave. S.
TELEPHONE: Baker 3-5440

"OFFICE CHRISTMAS PARTY?"
The office loves a good Christmas party — and when you have your party here you know everything will run smoothly — everybody will have a wonderful time. You'll be surprised how little it costs. A private room if you wish — and of course, the very best in food, drinks, and service. Best of all — no cleaning up afterwards.
Call Mike Motta or Bill Sullivan BA 5-1400

SHERATON HOTEL
William F. Gorman General Manager

For the Sick and The Shut-ins
HIGH MASS
on RADIO
WHAM
11:00 a.m. 'til 12 noon
Sunday, Dec. 6
from NAZARETH COLLEGE STUDENT CHAPEL
REV. WILLIAM H. SHANNON Celebrant
MOST REV. JAMES E. KEARNEY, D.D. Bishop of Rochester Preacher
Music by the Nazareth College Student Choir
Hear the MUSIC, SERMON and CEREMONIES of HIGH MASS on the FIRST SUNDAY of EVERY MONTH

Package Stores
LEGAL BEVERAGES

CRAMER'S LIQUOR STORE
753 Genesee St., at Sawyer
BE. 5-8029

A COMPLETE STOCK AT HENNER'S LIQUOR STORE
81 E. 5-7674
554 Chili Ave., near Thunton

SAM KROLL'S LIQUOR STORE
WOODCLIFF LIQUOR STORE
We Deliver
2261 CLIFFORD AVE.
Buller 8-1392

NORTHGATE LIQUOR STORE
PHONE Northfield 3-4100
Hours Mon. - Thurs. 9:30 a.m. - 10 p.m. Sat. 9 a.m. - 10 p.m.

GENESEE LIQUOR STORE
576 THURSTONE RD.
BE. 5-3069

Schwalb LIQUOR STORE
1129 MONROE AVE. TWELVE CORNERS BRIGHTON
GREENFIELD 3-9141

PARKING 10 to 10
HUBBARD 2-4533
we deliver
126 Winton Road North

WARNER'S LIQUOR STORE
HICKEY ROAD AT CHILI AVE.

Alex F. Moore Inc.
West Liquors
508 STONE ROAD
NO. 3-5997 at Dewey

Keep Your Spirits Up!

Haggerty and Mahon
(K. V. Liquor Store)
Plenty of Free Parking at Door
1439 Ridge Rd. W., opp. Howard Johnson's
Open 10 A.M. - 10 P.M. Univ. 5-8160

Your Christmas Headquarters
We Have One of the Largest and most complete displays of CHRISTMAS DECORATIONS and TRIMMINGS in the Rochester Area.
ORNAMENTS
ALL KINDS LIGHTS ARTIFICIAL TREES
LARGE CHOIR SINGERS WREATHS
NOVELTIES ORIGINALS
and many, many other items too numerous to mention
TOYS! TOYS! TOYS!
4000 SELECTED CHRISTMAS TREES
COME IN AND BROWSE AROUND
Bring the kids to see our MODEL TRAIN LAYOUT and RIFLE DISPLAY
Green Acres Garden Center
2525 W. HENRIETTA ROAD • PHONE GR. 3-9850
On Route 15 — A Mile North of Southtown Plaza
Open Daily 8 A.M. 'til 9 P.M. Sat. and Sun. 9 A.M. 'til 6 P.M.
LARGE FREE PARKING AREA

Out of the past
this magnificent present
PARTNERS CHOICE
DECANTER
Bellows FULL QUART \$5.89
Colonial Decanter
Generous quart size—beautifully gift-wrapped!
Reflecting a tradition of taste and hospitality, Bellows — famous since early American days — brings you this magnificent Colonial decanter. In it, a full quart of light, satisfying Bellows Partners Choice, the blend unusually rich in fine aged base whiskies!
Available just for this holiday season, this decanter comes beautifully gift-wrapped, ready to present. The regular round fifth also available in handsome gift-wrap. \$4.79 1/3 QUART
BELLOWS PARTNERS CHOICE
BELLOWS COMPANY, LOUISVILLE, KY. • WHISKEY—A BLEND • 40% KENTUCKY STRAIGHT WHISKEYS, 4 YEARS OR MORE OLD • 60% GRAIN NEUTRAL SPIRITS • 86 PROOF • DISTRIBUTED BY NATIONAL DISTILLERS PRODUCTS CO.