

# Bishop To Dedicate New Horseheads School

# Seminarians To Stage SVD Mission Display

## Father Coffey Listed By CCD

The Rev. David J. Coffey, an alumnus of St. Bernard's Seminary of the Class of 1941, now the Director of the Confraternity of Christian Doctrine for the Diocese of Providence, will be a featured speaker for the Tenth Regional CCD Congress in Rochester on Sunday and Monday, October 11 and 12.

Father Schacky, Rochester CCD Director, wishes to invite interested parents and lay to Father Coffey's talk on Monday October 12, at 7:30 p.m. at the Columbus Civic Center.

Father Coffey will talk on the ways parents can teach religion to their children at home before and after they are of school age.

Some parishes in the Rochester Diocese have been distributing the "Parent-Educator" leaflets that Father Coffey will explain at the Congress session.

## Forty Hours

Sunday, Sept. 13 — Holy Redeemer, Rochester; St. Mary, Danville; St. Casimir, Elmira; St. Anthony, Groton; St. Mary, Horseheads; St. Michael, Monticuma; St. Patrick, Owego; St. Michael, Union Springs; St. Patrick, Macedon.

Dedication of the new St. Mary's grade school at Horseheads is scheduled for Sunday afternoon September 13 with Bishop Kearney officiating at 5 p.m.

Rev. Francis J. Reilly, pastor, stated that the new \$300,000 structure marks the first Catholic school to be opened in Chemung County outside of the City of Elmira and will fill a great need to provide the children of the more than 600 families of the parish with an every day indoctrination into the truths of their Faith as well as the general studies of the classroom.

The school is located on an 8-acre site extending from Broad to Westlake Streets in the village and plans call for the eventual construction of a new church, rectory, playground area and parking space for 300 cars, leaving ample room for any possible expansion that may be necessary to increase the size of the school.

The school is of the latest construction and will have 8 classrooms, a principal's office, an auditorium-gymnasium with accommodations for 600 people, a health room, equipped kitchen, store rooms, yard rooms and will be heated by the latest in gas fired boilers.

CONSTRUCTION of the building is of cinder block, brick faced with stone trim. The ceilings in the classrooms and auditorium are of wood cedar and fir being used to add to the beauty of the interiors. Plans are for the use of the auditorium in the near future for Sunday Masses to relieve the overcrowded conditions in the present small church.

A financial need fund raising campaign was held in April of last year when \$100,000 was subscribed in pledges to help meet the cost of the project.

The campaign exceeded by 60% the quota set and was considered an outstanding tribute to Father Reilly for his efforts as pastor for over 22 years.

The first St. Mary's church in Horseheads was erected in 1866 and was served as a mission by the priests of St. Peter and Paul's Church, Elmira.

In 1869 it was transferred to a Mission of St. Mary's of the Lake Church, Watkins Glen and in 1872 it was established as a parish with Father Thomas Herick as first pastor. Father Herick built the first rectory on Westlake St.

SUBSEQUENT pastors included: Rev. Lawrence W. Murphy, (1881-1883); Rev. James Griffin, (1883-1890); Rev. D. Daly, (1890); Rev. William T. Dunn, (1890-1901); Rev. James J. Gibbons, (1901-1903); Rev. Michael C. Wall, (1903-1909).

## Congratulations From The Dean

"I am sure that I express not only my own feelings but also those of the other Priests and the laity of the area when I say, 'congratulations to Father Reilly upon a work well done' and to the people of St. Mary's church of Horseheads upon the opening of their new parochial school.

"Great sacrifices have been made by the parishioners and a very heavy task has been met by the Pastor in this building that they will find the results were worth the sacrifice and labor. The school will prove to be a powerhouse of spiritual life in the parish."

Above was a statement made by Rt. Rev. Leo G. Schwab, V.P., Dean of the Chemung-Schuyler Deanery.

Rev. James F. Winters, (1900-1917); Rev. John Killen, (1917-1930); Rev. Michael B. Groden, (1930-1936).

Father Reilly was assigned as pastor in 1936.

The present rectory on Broad Street was built in 1909 and the present adjoining church was constructed in 1902.

## New Convent For Sisters

A dwelling adjacent to the new St. Mary's school in Horseheads is being extensively renovated for use as a Convent for the three Sisters of St. Joseph who are teaching at the school.

The Sisters for the present will reside at St. Mary's convent in Elmira pending completion of the work at the Convent.

Provisions have been made in the structure for a Chapel, community room, dining room, kitchen, sleeping accommodations and bathrooms.

Sister Agnes DeSales has been named principal. Sister Doretta and Sister Pius will complete the staff for the coming year.

The first St. Mary's church in Horseheads was erected in 1866 and was served as a mission by the priests of St. Peter and Paul's Church, Elmira.

In 1869 it was transferred to a Mission of St. Mary's of the Lake Church, Watkins Glen and in 1872 it was established as a parish with Father Thomas Herick as first pastor. Father Herick built the first rectory on Westlake St.

SUBSEQUENT pastors included: Rev. Lawrence W. Murphy, (1881-1883); Rev. James Griffin, (1883-1890); Rev. D. Daly, (1890); Rev. William T. Dunn, (1890-1901); Rev. James J. Gibbons, (1901-1903); Rev. Michael C. Wall, (1903-1909).

## Congratulations From The Dean

"I am sure that I express not only my own feelings but also those of the other Priests and the laity of the area when I say, 'congratulations to Father Reilly upon a work well done' and to the people of St. Mary's church of Horseheads upon the opening of their new parochial school.

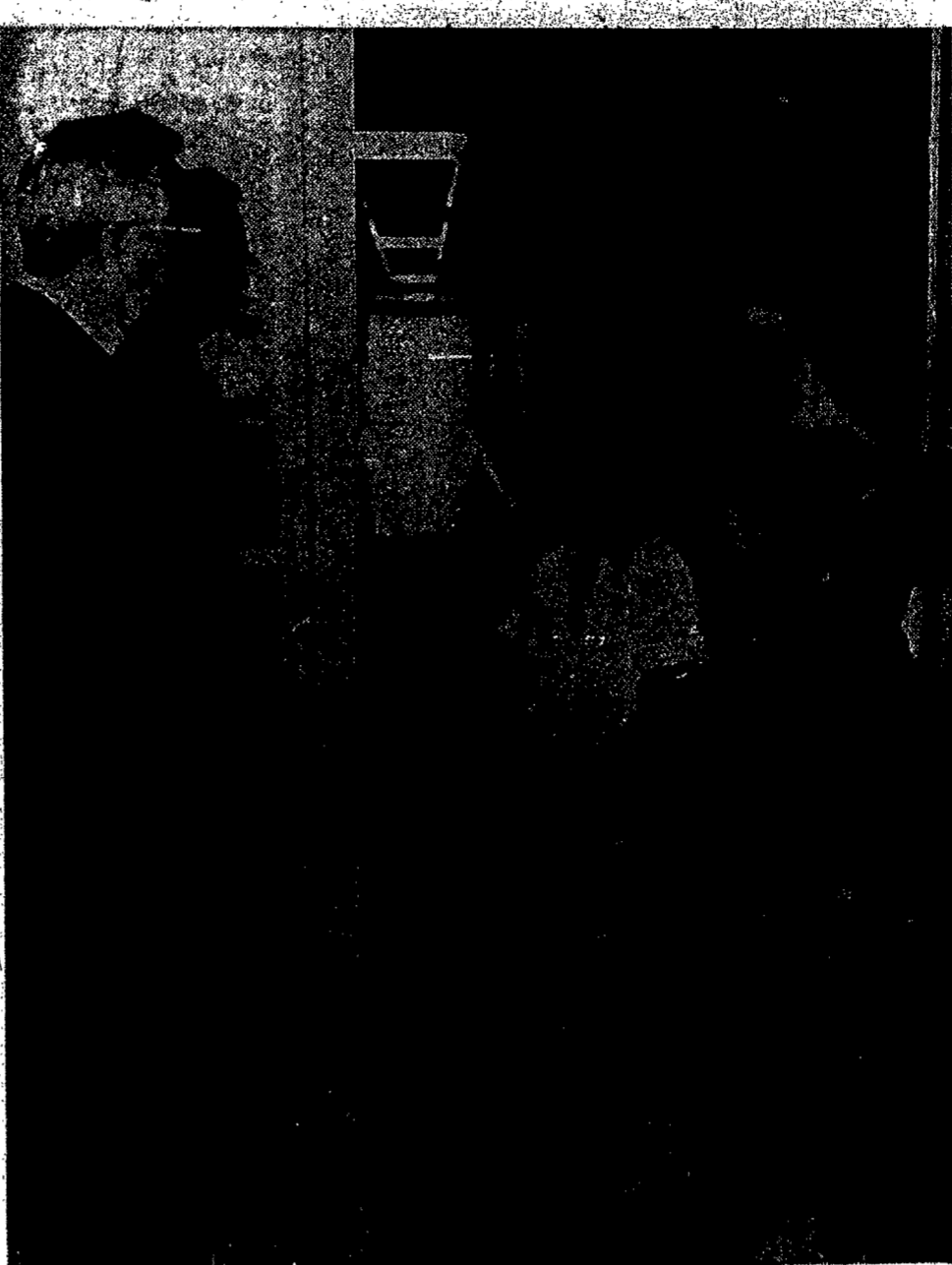
"Great sacrifices have been made by the parishioners and a very heavy task has been met by the Pastor in this building that they will find the results were worth the sacrifice and labor. The school will prove to be a powerhouse of spiritual life in the parish."

Above was a statement made by Rt. Rev. Leo G. Schwab, V.P., Dean of the Chemung-Schuyler Deanery.

Rev. James F. Winters, (1900-1917); Rev. John Killen, (1917-1930); Rev. Michael B. Groden, (1930-1936).

Father Reilly was assigned as pastor in 1936.

The present rectory on Broad Street was built in 1909 and the present adjoining church was constructed in 1902.



WELCOMING PUPILS to the new St. Mary's School are pastor Father Francis Reilly and principal Sister Agnes DeSales. Third graders are Edward Netski and Jean Decker.

Father Dunn began celebration of Sunday Masses for Catholics in the Elmira Heights area in 1900. St. Charles Borromeo Church was erected there in 1904. St. Pius X Church was erected as a parish in Van Etten, under the care of priests of St. Fidelis Friary, Interlaken.

## Pastor's Statement

"It is a privilege and a pleasure to be instrumental in providing a school for this rapidly growing parish, which is characterized by a high percentage of children of school age and near school age."

"Every Priest realizes the necessity and great value of Catholic education but it is particularly heartening to know that so many parents are highly appreciative of Catholic schools and are so eager to send their children to them, and sometimes at the cost of considerable sacrifice."

"This is exemplified by the enrollment in our new school. I am grateful to all friends and parishioners for their financial pledges to our school building fund and sincerely trust that your continued support of this parish and school will enable us to pay off our indebtedness in the near future."

In 1904, and was served as a mission of St. Mary's until it was established as a parish in 1935.

The late Father Groden was transferred to the pastorate of St. Vincent de Paul Church, Corning, and was succeeded as pastor of St. Mary's by Father Reilly on June 26, 1936.

In 1940 St. Mary's, which still encompassed the original territory including Millport, Brees-

port, Van Etten, Veteran, Callin and Fisherville, was enlarged to include most of Big Flax, extending to the Steuben County line. In 1954 St. Pius X Church was erected as a parish in Van Etten, under the care of priests of St. Fidelis Friary, Interlaken.

He served as assistant pastor at St. Monica's and then at Holy Cross, Rochester; St. Mary's, Waterloo, and St. Patrick's, Seneca Falls.

On Aug. 1, 1930, he founded and was first principal of Elmira Catholic High School, while serving as assistant at St. Peter & Paul Church there. He remained in this post until his appointment to Horseheads.

Rev. Roger Switzer was named assistant pastor in June of this year. Father Switzer, from this year's ordination class, celebrated his First Solemn Mass in Sacred Heart Cathedral in June.

## Faith Society Head Asks Help For Missionaries

Cooperation of faculty and children of diocesan grammar schools is asked by Rev. George S. Wood, diocesan director, with the Holy Childhood Association as the school year opens.

In a letter to the Sister Principals, Father Wood said the Association brings the mission message of the Church to the children so that when they are the adults of the next generation they will be fully informed.

"THE FAST YEAR was very successful," Father Wood said. "The material and financial sacrifices we can count, but the many prayers, personal sacrifices and graces can only be known by God. Likewise, we feel that this activity in every school is an added means of blessings not only for the children, but especially for the parish as a whole."

Children will be encouraged to participate in the adoption of pagan infants. All adoptions, Father Wood said must be sent to the diocesan office, Society for the Propagation of the Faith, 50 Chestnut St. to be forwarded to the national office.

No adoptions may be specified for any individual missionary priest or sister, because, Father Wood's letter said, as often happens, they may not be in a position to accept adoptions, even though "your charity might want to help them."

## Seminarians To Stage SVD Mission Display

"The four corners of the earth" are being enclosed in the auditorium of St. Michael's Divine Word Seminary, Conesus, N.Y., as the seminarians prepare their third annual Mission Display for Sundays Sept. 13, 20 and 27 from 1 to 6 p.m.

Thirteen booths will portray the activities and accomplishments of Divine Word Missionaries throughout the far-flung stations of the earth. These booths represent work in China, India, Africa, South America, The Philippines, Indonesia, New Guinea, Japan, and the Negro Apostolate in the U.S.

A booth, new and different is directed to the laity, to point out to them their opportunities and obligations in the Church's Universal Mission Apostolate. Another booth points out the pioneer work of the Divine Word Missionaries in the field of science, especially anthropology. Yet another new booth will feature the everyday life and work of Divine Word Priests and Brothers.

Adding to the features of this year's display are Frater Edward Flynn, S.V.D., a native Filipino in the Philippines booth.

Veteran missionaries especially on hand for the occasion are Father Kellen, S.V.D., from the Philippines mission, Father

Flaska, S.V.D., from Indonesia, and Father Eckermann, S.V.D., from India. Also on hand will be Ghana's delegate to the U.N., who will speak at the African exhibit.

The public is invited to attend the Mission Display, view movies and talk with seminarians and brothers. Other points of interest will be the seminary grounds with its outdoor Stations of the Cross, Rosary groves and religious gift shop.

On Sept. 15, the first day of the Mission Exhibit, a Beef "Bar-B-Q" will be served during the afternoon with chips, slaw, relishes, rolls and coffee for \$1. Also hot dogs, hamburgers, pop, ice cream and candy will be available.

Benediction of the Blessed Sacrament with special prayers for the Missions will be held on these Sundays at 4 p.m.

The Seminary is located 6 miles southeast of Livonia Center directly off highway 15A.

**PERRY & MAXCY**  
INSURANCE  
PERRY BLDG. ELMIRA

**BRADY SUPPLY CORP.**  
ELECTRICAL, MILL & REFRIGERATION SUPPLIES  
**ICECO, INC.**  
DISTRIBUTORS OF  
ELECTRONIC EQUIPMENT & COMPONENTS  
RE 3-6591  
649 - 653 MADISON AVE. ELMIRA

**HIRES TURNER**  
**GLASS CO.**  
1220 So. Main St. Elmira

**EVANS PAVING & CONSTRUCTION CO.**  
RE 9-1131  
EXCAVATING - GRADING - PAVING  
HORSEHEADS, N.Y.

**COLLINS & WALTON**  
**PLUMBING & HEATING Inc.**  
RE 2-7488 RE 9-5041 RE 2-7948  
1339 1/2 College Ave. Elmira

**MARK M. TABER**  
**INSURANCE AGENCY**  
CHARLES H. GOODYEAR, JR.  
AGENT  
FIRE  
GENERAL INSURANCE  
RE 9-4841  
107 S. Main St. Horseheads, N.Y.

**CRUSADE & SMITH Inc.**  
RE. 3-6621  
WE ARE PLEASED TO HAVE ACTED AS  
COLOR CONSULTANTS  
IN THE NEW ST. MARY'S SCHOOL  
DISTRIBUTORS OF  
BRUNING BROS. PAINTS  
255 W. WATER ST. ELMIRA

**LINN S. CHAPEL CO. INC.**  
BUILDING MATERIALS — STONE  
LUMBER — BRICK — HARDWARE  
DUPONT PAINTS  
RE 4-5191  
1040 CATON AVE. ELMIRA

**CHAS. F. EVANS CO.**  
INDUSTRIAL  
ROOFERS  
RE 4-8151  
357 E. FIFTH ST.  
ELMIRA, N. Y.

**McLane Construction Co.**  
GENERAL CONTRACTORS  
RE 3-6511  
1875 W. Water St. Elmira