



THE SAVINGS ARE BIGGER

Acme



OPEN THURSDAY & FRIDAY NIGHTS UNTIL 9 P. M.

89¢ SALE Second Big Week

PET MILK 6 14½-oz. cans **89¢** WHY PAY MORE

HUNT'S TOMATO SAUCE 10 8-oz. cans **89¢**

MOTTS Applesauce 6 15-oz. jars **89¢**

BLUE BOY PEAS 5 16-oz. cans **89¢**

KELLOGG'S CORN FLAKES 4 12-oz. pkgs. **89¢**

SUNSHINE Cookies Orange Sandwich P. Betty Cakes 49¢
 SUNSHINE LEMON COOKIES 45¢
 SUNSHINE Molasses & Spice Cookies 39¢
 SARAN WRAP Why Pay More 33¢
 KRAFT VELVEETA Cheese Spread 55¢
 RIVER BRAND White Rice 23¢
 CAROLINA LONG GRAIN RICE Why Pay More 23¢

DILL PICKLES Wesson 3 89¢ Princess O.P. TEA BAGS 100 ct. 89¢
 French Green BEANS Ideal 5 15½-oz. 89¢ Seaside LIMA BEANS 6 16-oz. 89¢
 BLUE RIBBON NAPKINS 7 40 count 89¢ Maraschino CHERRIES Orchard Queen 3 11-oz. 89¢

VIRGINIA LEE ICE CREAM ½ gal. **59¢**
 LOVELLA BUTTER 1 lb. 75¢
 IDEAL OLEO 4 1 lb. pkgs. 89¢
 FARMDALE MILD CHEESE 59¢

LA CHOY Chop Suey Vegetable with Chicken 34-oz. can 85¢
 GERBER Baby Foods Mixed Cereal, Rice, Oatmeal or Barley 2 8-oz. pkgs. 37¢



FRYERS

PARTS...WEAVER

LEGS 2½ lb. pkg. **\$1.29**

Breasts 2½ lb. pkg. **\$1.49**

Chicken Halves 5 lb. box **\$2.29**
 NO NECK OR GIBBETS

CANNED MEAT SALE



Genuine Chopped **HAMS 3** lb. cans **\$1.99**

LANCASTER COOKED **HAMS 6¾** lb. can **\$5.99**

CORNER **BEEF 3** lb. cans **\$1.99**

BAKERY TREATS

Supreme **OLD FASHIONED HOME STYLE BREAD** 2 1/2 loaves **39¢**

SPECIAL Virginia Lee **FATHER'S DAY CAKE** only **79¢**

CHERRY SWIRL Virginia Lee 39¢

FROZEN FOOD BUYS

IDEAL STRAWBERRIES 3 16-oz. pkg. **\$1**

IDEAL ORANGE JUICE 2 12-oz. cans **79¢**

REDDI WIP TOPPING 4-oz. can **59¢**

DOLE PINEAPPLE & ORANGE JUICE 2 6-oz. cans **39¢**

CHEESEBURGERS LANCASTER BRAND FOUR CHICKEN 8-oz. pkg. **49¢**

FARMDALE PIES Beef Chicken Turkey 5 8-oz. pkgs. **\$1**

4 FISHERMAN COOKED **SCALLOPS** 7-oz. box **49¢**

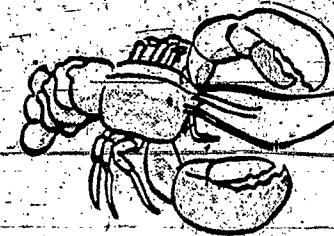
Shop ACME Today

Tender...lean... **SMOKED PICNICS**



Tasty Economical 4 1/2 lb. average **29¢**

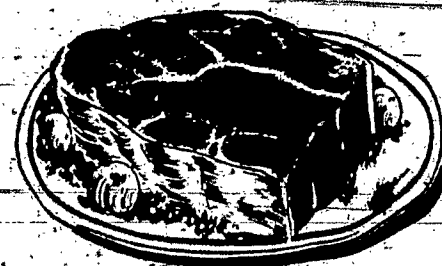
FRESH... LIVE... **LOBSTERS**



from the coast of Maine

Shipped in by air to give you ocean freshness and flavor. **79¢**

E-Z CARVE **CHUCK ROAST**



Lancaster Brand **49¢**

E-Z CARVE RIB ROAST **69¢**

RIB STEAKS 79¢ CLUB FRANKS Natural Celery 59¢
 CANADIAN BACON by the piece 79¢ DRESSED WHITING 5 lb. box 79¢
 SLICED BEEF-LIVER 59¢ SPICED LUNCHEON MEAT by the piece 49¢
 FRESH GROUND BEEF 59¢ LANCASTER CHIPPED HAM 4-oz. pkg. 39¢



CANTALOUPE

JUICY...PINK MEAT

JUMBO SIZE

2 for **49¢**

PEACHES Fresh Georgia FREESTONE 4 lbs. **49¢**

Iceberg LETTUCE HOME GROWN Head **10¢**

ACME OFFERS YOU

OVER 700 PREMIUMS TO CHOOSE FROM

OPEN THURSDAY & FRIDAY NIGHTS UNTIL 9 P. M.

Now YOU GET 50 FREE DOLLAR DOUBLERS BY SAVING \$50.00 MORE IN ACME PINK REGISTER TAPES. JUST GIVE AN ENVELOPE AND TAPES TO THE CASHIER IN EXCHANGE FOR 50 FREE DOLLAR DOUBLERS.

FOR THE BRIDE

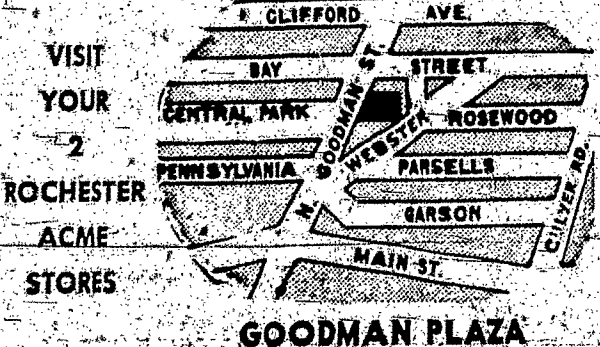
DACRON FILLED COMFORTER Nylon cover, comes in Pink, Blue or Gold. 420 DD's **SAVE \$4.55**

LACE TABLECLOTH Large 70"x90". Beautiful open mesh floral pattern. 225 DD's **SAVE \$3.75**

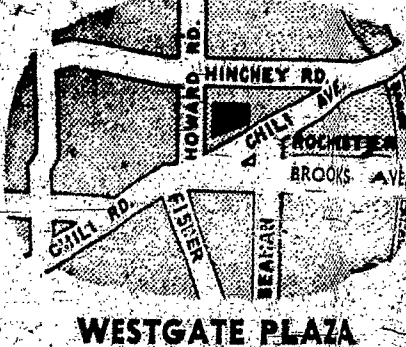
DOMINION FRY SKILLET Completely Immeasurable for cleaning. 585 DD's **SAVE \$8.25**

G.E. PORTABLE MIXER Push button heater release... 3 speeds. 732 DD's **SAVE \$5.31**

Save ACME Pink Register Tapes for 50 FREE DOLLAR DOUBLERS



Now waiting to serve you with the lowest Prices



Turn Your ACME PINK SLIPS In At Your Local Parish... These Tapes Will Be Redeemed By The Priest For Church Needs...

FLUFFO Shortening 3 lb. can **87¢**
 KRAFT All Purpose Salad Oil 1 qt. **55¢**
 RED ROSE Tea 48 bags **67¢**
 BERNARDIN Caps. of 12 33¢
 Lids of 12 33¢

Fr. Fisher At John

Rev. Robert Fisher, Director of Education at St. John's, has been transferred to St. John's University, Winona, Minn.

Father Fisher and John O'Meara, O.S.B., have been transferred to St. John's University, Winona, Minn.

Both Fathers Fisher and O'Meara are married and have families.

A GRADUATE of Assumption, Father Fisher was the school's vice-principal.



FATHER FISHER, director of studies, headed on many educational fronts in Rochester and St. John's.

In announcing the change to the faculty at a board meeting this week, the city paid particular tribute to the work of Father O'Meara, establishment of St. John's College.

Father O'Meara began in 1951, and with Rev. John F. Murphy, C. S. B., first president, he was greatly responsible for the college's growth. He was given the college by the community and educational authorities.

He will resume his career at Assumption in the Department of Sociology.

Other changes at the college are as follows:

Rev. Alphonse Malen, professor of Psychology, will join the faculty of Assumption University.

Rev. John McReavy, who has been transferred to St. Thomas, Texas.

Rev. John Cavanaugh, who has been given a leave of absence to continue graduate studies at the University of Louisiana.

Four priests have been assigned to the St. John staff:

Rev. Robert Miller, professor of psychology, Assumption University, Miller is a native Rochesterian.

Rev. Leo Hettler, C.S.B., has completed his graduate studies.



Proja have Proja remodel your home now while

Projanya furnished moded" furs in additional year pricingly low Come in today

clutch, capelet and stoles.

Proja