

### Educators Ask

## End Public-Private Schools Distinction

Washington — (NC) — Commissions of two influential educational associations have called for a remedy to what they charge are distinctions in treatment between public and private schools in the National Defense Education Act.

**BOTH INDICATED** they will support moves in Congress to amend those clauses which deny benefits to private, nonprofit school teachers while granting them to public school instructors. "Almost identical stands were taken by the Committee on Relationships of Higher Education to the Federal Government of the American Council on Education and the Commission on Legislation of the Association of American Colleges.

The act, now in effect, provides for expenditure of some \$887 million over the next four years for a variety of purposes, mostly loans to needy college students.

**KEY POINT** in the positions taken by the two commissions is that section of the act which permits college students who borrow Federal funds to work off 50 per cent of their loan by becoming teachers in public elementary or secondary schools.

The act provides these teachers can be forgiven 10 per cent of the principal and interest for each year they serve, up to 50 per cent of the loan.

Both educational groups said this "forgiveness feature" should be extended to teachers in private, nonprofit, elementary and secondary schools and to teachers in both public and private institutions of higher learning.

## Hearing Reveals Migrants Plight

Washington — (NC) — A blue-ribbon citizens' committee spent two days here gathering facts and opinions on exploitation of many of America's approximately two million farm workers, especially migrants.

What the National Advisory Committee on Farm Labor heard was that both Americans and foreigners, mostly Mexicans, moving the breadth of the country to harvest crops, have no unions, no minimum wages, often miserable living conditions and transportation arrangements sometimes worse than those for cattle.

**IT ALSO HEARD** from the head of the Labor Department in support of a minimum wage program, from a union spokesman of a planned drive to organize the workers, from a farmers' association spokesman of moves to encourage improvement and from a Senator of need for a broad Federal attack.

The meeting, which borrowed the format of a Congressional hearing with "witnesses" testifying before a panel, was preceded by a joint statement from three religious figures who said the plight of farm-workers families should arouse the conscience of the United States.

"Amidst the plenty of America," said their statement, "these people—chiefly the migrant families—are ill-nourished and poorly clothed and housed."

"Undoubtedly the condition of these people is one of our nation's most pressing social problems. Those of us who are fortunate enough to look upon a full dinner table do not really know the price of our repast."

## Scientists Go To Church, Hungarian Reds Complain

Vienna — (RNS) — A leading Communist publication in Budapest complained that even men of science are still going to church in Hungary because anti-religious propagandists have fallen down on the job.

An article in *Tarasalmi* magazine, bimonthly "scientific" organ of the Hungarian Socialist Workers (Communist) Party, demanded a "considerable increase" of atheistic propaganda to combat "the still strong influence of religion" on the minds of the people.

The magazine criticized party leaders for failing to intensify their anti-religious propaganda since the 1956 revolution. It said the publication of a total of 50 books and 150 articles on anti-religious themes was a comparatively poor showing.

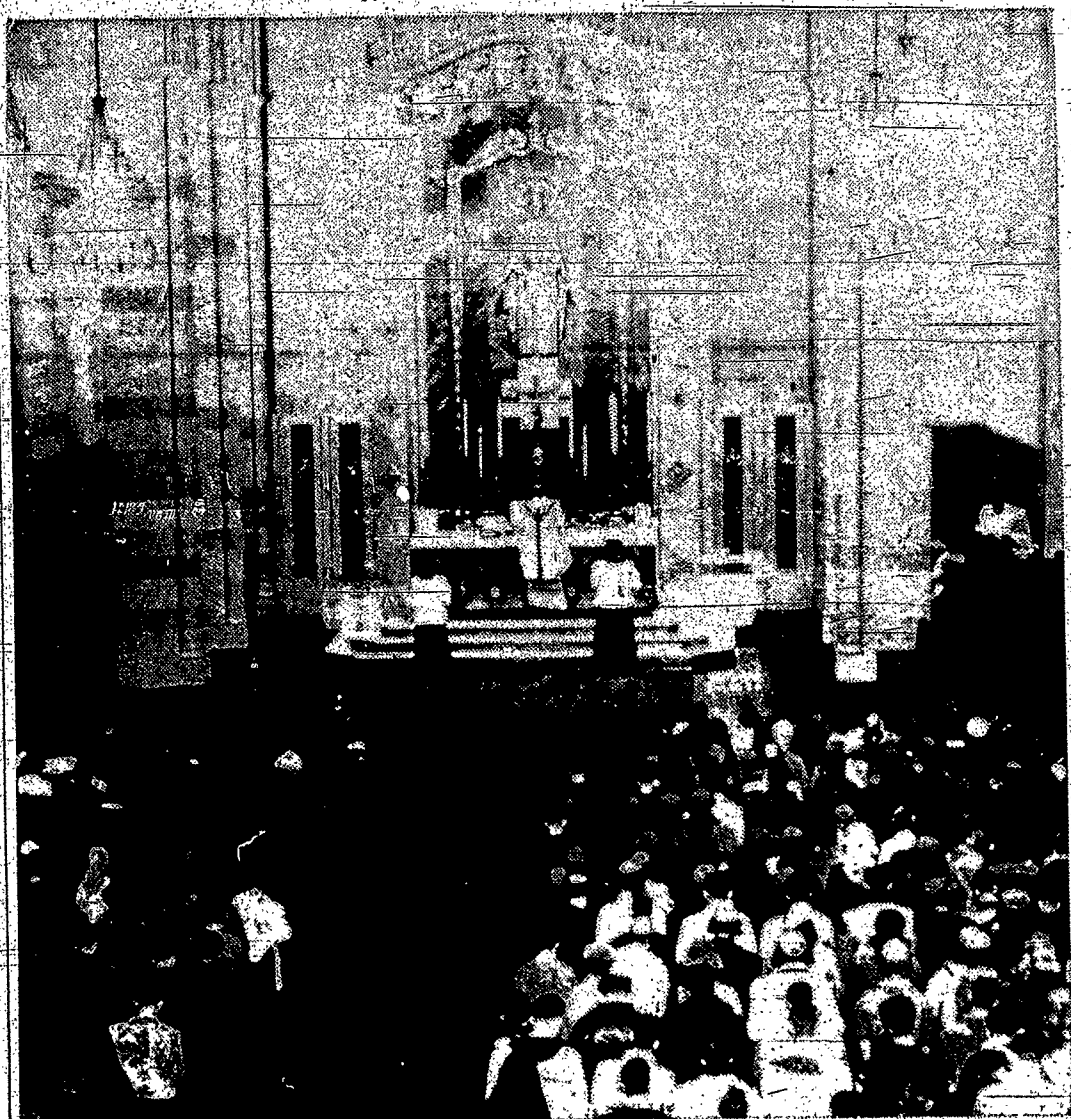
"No atheistic book has been published at all since 1956," the magazine complained.

It said the failure to provide an adequate supply of atheistic material is the only possible explanation for "the scandalous fact that even outstanding scientists

### Filipinos Called To Mission Role

Manila — (NC) — The Philippines Hierarchy has designated 1959 as a special "Mission Year" and indicated that since Western missionaries are "no longer welcome" in some areas, it is now up to Filipinos to evangelize their fellow Asians.

It is explained that the similarity of cultures between the neighboring southeast Asia nations and the Philippines would make Filipino missionaries most acceptable. "Westerners are no longer welcome in certain regions," the statement said, "whereas Asians like ourselves will not be regarded with suspicion."



Children of Sacred Heart Cathedral school were introduced to the Dialogue Mass on the First Friday, Feb. 6. Children made the Latin responses from a specially prepared leaflet. Father Wedow in pulpit guided them as Father Hogan offered the Mass.

## Fifty Parishes Do Dialogue Mass

(Continued from Page 1)

Dialogue Mass there takes no longer than the ordinary low Mass. All Masses at St. John's—including the Sunday high Mass—have congregational participation, the pastor Father Donald E. Lux said.

All Masses at St. Charles Borromeo Church, also in Greece, are dialogue Masses. Father Robert Kelen, pastor, said "I'm really pleased. The people are going very well."

**OTHER PARISHES** which have started the dialogue Mass include St. Joseph's Church, St. Boniface, Our Lady of Victory, Holy Family, Our Lady of Good Counsel, Immaculate Conception, St. Francis of Assisi, Holy Apostles, St. Andrew St. Francis Xavier, St. Michael, Our Lady of Mt. Carmel and Most Precious Blood, Rochester.

Also at St. Gabriel's, Harmondport; St. Patrick's, Cato; and St. Thomas, Red Creek; Good Shepherd—Hamlet; St. Ann's, Palmyra; St. John the Baptist, Elmira.

St. Joseph, Weedsport; St. Patrick, Macedon; St. Michael, Montezuma; St. Alphonsus, Auburn; St. Mary, Ontario; St. Mary, Waterloo; St. Ignatius, Hornell; St. Felix, Clifton Springs; St. Mary Magdalene, Wolcott.

Holy Family, Auburn; St. Leo, Hilton; St. Paul of the Cross, Honeoye Falls; St. Pius X, Chili; and St. Thomas, Irondequoit.

## New Church Construction Tops Record

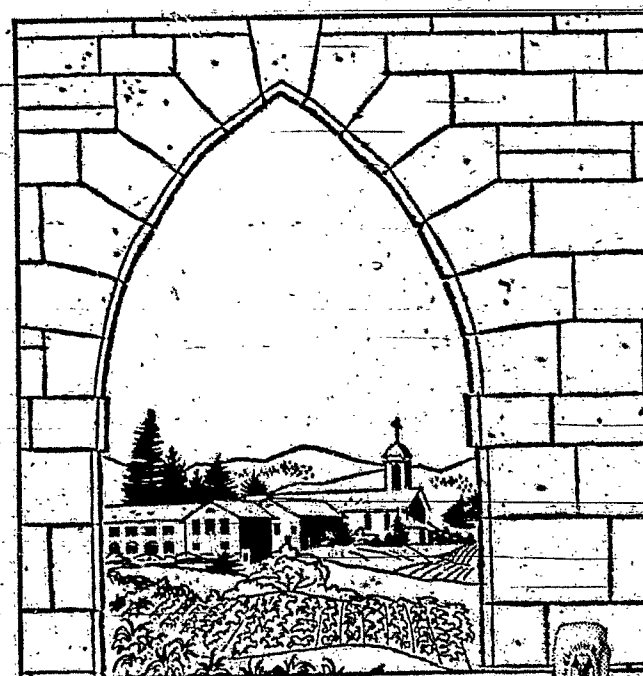
Washington — (RNS) — Church construction got off to a big start in 1959, setting a new January mark of \$73,000,000, the U.S. Department of Commerce and Labor reported here.

Even though this was a seasonal decline of \$2,000,000 from the December figure because of inclement weather, it topped January, 1958, by \$3,000,000.

**BUILDING** activity by non-public schools and colleges, most of which are church-related, also got off to a brisk start, totaling \$47,000,000, compared with \$43,000,000 in the same month a year ago.

Nonpublic hospital and institutional construction, which has been declining a little after a rapid spurt in 1958, totaled \$48,000,000 in January, a decline of \$3,000,000 from last year's record level.

The government has predicted that both church and nonpublic school construction will set new records in 1959 and if the January figures are an indication of the construction picture for the rest of the year, the forecast will be amply fulfilled.



The Christian Brothers Novitiate at Mont La Salle is in California's Napa Valley. The Valley's fertile grapes are cultivated for The Christian Brothers Burgundy.

From the dedicated labors of devoted men come the great wines of The Christian Brothers of California. AN ORDER FOUNDED IN 1863, REIMS, FRANCE. Fromm and Siebel, sole distributors, New York, N.Y., Chicago, Ill., San Francisco, Calif.

## Strict, Old Fashioned Solutions Won't Solve Today's Teenage Problems

By FATHER JOHN L. THOMAS, S.J., Assistant Professor of Sociology at St. Louis University

My husband and I can't agree on how to raise our teen-age daughters. Both attend a girls Catholic high school. One will graduate this June and the other is a junior. Because of several unfortunate teen-age incidents in the community, my husband won't let them have dates or attend any plays, dances, proms, and so forth, at the school when boys are involved. Naturally they are brokenhearted. I feel we are being too strict. Shouldn't they be permitted some social life at their age?

Your question points up a delicate problem facing all serious parents in our society. Dismayed by what appears to be an ever-increasing flood of juvenile delinquency, pre-marital pregnancies, early marriages, and irresponsible conduct, many fathers and mothers are earnestly seeking adequate ways to protect their children.

Their task isn't made any easier by the thoughtless conduct of other couples. You and your husband are to be commended for taking your parental obligations seriously.

At first glance, one of the most direct ways to solve the problem appears to be the one you have chosen: keep teen-agers at home and they won't be able to get into trouble outside.

This method seemed to work out all right in the past, it should be effective today. Let other parents raise their children the way they like, at least yours are going to be protected.

This is one approach—direct, apparently effective, and not too difficult to manage if you start early. Unfortunately, it is not a real solution because it attempts to deal with the problem out of its current context.

What worked in the past may be quite ineffective and even harmful today, for past

solutions were designed to deal with past situations. If conditions change, we must develop new solutions.

This raises a basic question that must be answered before we can talk about solutions.

What are parents trying to accomplish in dealing with their teen-age children? Prevent juvenile delinquency? Protect their virginity? Keep them from too early marriages?

These are partial, negative aims that derive their significance from a positive, more basic goal. This is the development of Christian maturity, the ability to take one's place as a faithful follower of Christ in the society in which one must live.

Hence parents face a developmental task in dealing with their teen-agers. But development implies continuity. By this I mean that each step in the process must prepare their children for the next. Children must learn to crawl before they can walk, to walk before they can run.

Likewise, teen-age development must be a step by step process in which children proceed from being directed primarily by others to self-direction, that is, from obedience based on external commands to a sense of personal responsibility based on internalized standards and norms. At the same time, they must proceed from a competency in inter-familial relationships to competency in more complex, wider social circles.

This means that they must be gradually given opportunities to deal with others in the kinds of situations they will be expected to meet later in life.

Specifically, if your daughters do not have a vocation to the religious life, you must pro-

vide them with opportunities to acquire experience and competency in dealing with young men and women in normally expected social situations. Properly supervised family parties, school functions, and occasional dates are the ordinary means parents use to effect this necessary transition from the home to wider social circles.

### B. Forman Co.



### HI-SCHOOLER BOYS!

you are invited to meet

KYLE ROTE

... who will be here Saturday morning (Feb. 14), representing Sports Illustrated in a program opening the new Young Men's Shop in the latest addition to Forman's.

### Free Bus Rides During Lent

Buffalo — (RNS) — The Niagara Frontier Transit System Inc. has received permission from the Public Service Commission in Albany to give church-goers free rides during Lent.

The bus company's free service will begin Feb. 15 and continue through Easter Sunday, March 29. Church-goers will be able to ride free between 5 a.m. and 2 p.m. on routes in Buffalo, Niagara Falls, and communities in between.

### "THE HOPEFUL EYES OF HUNGRY CHILDREN"

follow me everywhere," Monsignor Ryan wrote to us recently. "They run before me... they follow behind... they're on every side of me, pleading, begging for food I simply cannot give. Their voices follow me by day—their memory stays through the night. It is hard to see—a child—so hungry—and it breaks my heart to send them away—still hungry!" We are doing our best to answer Monsignor Ryan's plea for more food. \$10 will feed an entire family for a week—why not put aside 25c a day during Lent to buy a food package... or send it \$10 to feed the children. You'll never miss it—and you'll never regret it. Monsignor Ryan will send you an olive seed rosary from the Holy Land for every food package you send to the children.

STRINGLESS—GIFTS ARE SINEWS FOR THE ARMS OF THE HOLY FATHER AS HE STRUGGLES TO SAVE THE NEAR EAST FOR THE SON OF GOD. CAN YOU HELP HIM... DURING LENT?

TWO FOR THE PRICE OF ONE... A REAL BARGAIN is to be had in Monzeite and Zeban (Ghazal)! The Holy Father has suggested that Monsignor McGeough erect "an all purpose building" as the missions of Monzeite and Zeban. These buildings will serve the many and varied needs of the converts. They can be used for Mass... for teaching the truths of the faith... for general parochial activities. Since it will be possible to contract for two buildings instead of one the price has been cut to \$2,000 for each. Both missions are growing rapidly and already have need for many buildings... church... school... parish hall... rectory. Monsignor McGeough is certain that this one building will solve the problem. Can you help him... perhaps you can do it as part of your Lenten program of penance.

YOUR LAST WILL IS GOD'S WILL WHEN YOU MENTION THE MISSIONS OF THE NEAR EAST. The feast of Our Lady of Lourdes (Feb. 11) brought many graces from the hands of Our Mother... and to SISTER ANNA and to SISTER CARLA Our Lady spoke in a special way and invited them to devote their lives to her honor in the Rosary Sisters of Jerusalem. They are very happy (as you can imagine) and they have asked us to search for a benefactor who will pay the necessary expenses of \$150 a year for each nun during the two year novitiate period. Can you help... in honor of Our Lady of Lourdes?

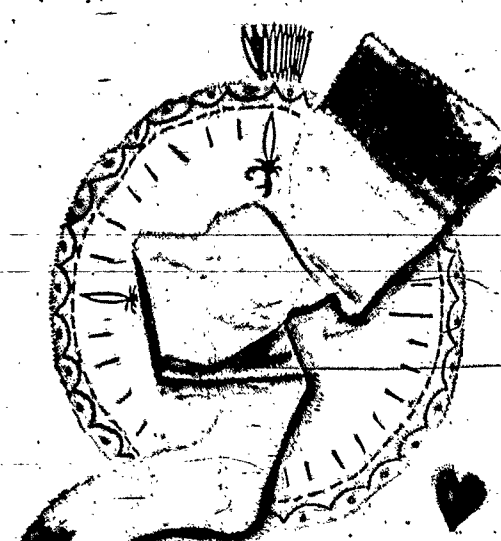
MASS OFFERINGS ARE NECESSARY FOR THE SUPPORT OF YOUR MISSIONARIES... THEY ARE NECESSARY FOR YOUR SPIRITUAL SUPPORT... REMEMBER THEM TODAY!

THE GRACES OF LENT WILL REMAIN WITH YOU FOREVER if you "adopt" a seminarian for your Lenten sacrifice. THE COST: \$100 a year for the six year seminary course. THE SEMINARIANS: JOSEPH or ABRAHAM who wish to devote their lives to the service of Christ in India. THE RESULT: An "adopted son" at the altar praying for you.

A SUGGESTION FOR EASTER... you may have the Holy Sacrifice of the Mass offered for your intentions or for a loved one; OR you can make a gift to the House of God for the same intention. We will be happy to send you beautiful gift cards anywhere in the world (as well as pressed flowers from the Holy Land) to tell of your generosity to mission work of the Holy Father in the Near East. Chalice... \$40 Altar... \$100 Mass book... \$25 Altar stone... 10 Candles... 20 Mass vestments... 50 Sanctuary lamp... 15 Crucifix... 25 Mass bell... 10

Near East Missions FRANCIS CARDINAL SPELLMAN, President Msgr. Peter P. Tuohy, Nat'l Sec'y Send all communications to: CATHOLIC NEAR EAST WELFARE ASSOCIATION 480 Lexington Ave. at 46th St., New York 17, N.Y.

### B. Forman Co.



delight your Valentine with

### "Round-the-Clock" nylon stockings

NOW ON SALE

These famous stockings with Individual Fit are styled to her height, weight, shoe size and leg contours!

- REGULAR STYLES WITH SEAMS N—dress sheers, reg. 1.65 3 prs. 4.15 T—walk sheers, reg. 1.65 3 prs. 4.15 W—walk sheers with comfort sole, regularly 1.50 3 prs. 3.75
  - STRETCH STYLES WITH SEAMS U—walk sheer, reg. 1.75 3 prs. 4.35 P—dress sheer, reg. 1.75 3 prs. 4.35
  - SEAMLESS STYLES C—sandalfoot sheer, regularly 1.65 3 prs. 4.15 E—sandalfoot mesh, regularly 1.65 3 prs. 4.15 G—sheer mesh, reg. 1.50 3 prs. 3.75 F—regular sheer, regularly 1.50 3 prs. 3.75 H—dress sheer stretch, regularly 1.95 3 prs. 4.90 A—wear sheer, reg. 1.50 3 prs. 3.75
- come in, write or phone H.A. 6-2000 HOSIERY, FORMAN STREET FLOOR also Forman's Culver - Ridge

## CASH

FOR UNFORESEEN EXPENSES!

Year	Monthly Payment	Loan Cost	Amount Paid
1	\$14.10	\$38.40	\$52.50
2	18.80	51.20	70.00
3	23.50	64.00	87.50
4	28.20	76.80	105.00
5	32.90	89.60	122.50
6	37.50	102.40	140.00
7	42.20	115.20	157.50
8	46.90	128.00	175.00
9	51.60	140.80	192.50
10	56.30	153.60	210.00

LINCOLN ROCHESTER TRUST COMPANY