

Builder Goes Skyward To Offer Homesites

ANDY CHENELLY, Realtor

TRADING POST
REAL ESTATE CO. INC.
241 BAKER
POWERS BLDG. 5-2230

DITCH DIGGING!
SEPTIC TANK SERVICE
FLAHERTY
314 WINTON ROAD N.
BUTLER 8-7885

Theodore Francis Spall, dominantly associated with the development of Sherwood Community in the Town of Pittsford, has reached into Penfield's upper atmosphere to offer "An Island In The Sky," a new plateau development more formally named "Woodhaven Heights."

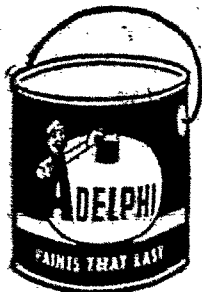
The tract, comprising only 28 large lots, overlooks Irondequoit Bay and deep wooded ravines with a single entrance off Brown-croft Boulevard via Parkview Drive.

The builder, developer and real estate broker anticipates quick action by home seekers looking for an unusual, restricted location where they can purchase their lots and build later, possibly according to their own plans. Tract improvements on this close-in scenic retreat are

paid for by the developer, Spall stated.

In addition to Sherwood Community and Woodhaven Heights Spall has entered the "No Money Down" construction race on yet another tract in the Town of Henrietta, off West Henrietta Road—just beyond Jefferson Road and the South Town Plaza. Ranches and Colonials in his "St. Joseph's Farm" presentation are selling to veterans on a 30 money down basis and \$96 per month including taxes, interest and insurance, according to his current announcements.

HERKRU HOME-WEEK VALUES!



ADELPHI PAINTS are really a treat. Snappy colors that can't be beat, Fade-resisting that stand the test. Best of all, they cost you less. So, if you take the time to make the test, You'll find ADELPHI PAINTS by far the best!

ADELPHI 1-GOAT HOUSE & TRIM	57.45 Value	\$5.35 Gal.
PORCH & DECK ENAMEL		Gal. \$4.50
PVA LATEX FLAT	\$6.39 Value	Gal. \$4.90
ADELPHI PRIMER-SEALER		Gal. \$3.45
7" ROLLER & TRAY "TREAT"		Only 89¢
ALL-PURPOSE WHITE and COLORS		Gal. \$2.91

Bring Your Problems—We Have the Answer
HERKRU PAINT STORE
128 MAIN ST. W. OPEN 8 to 5:30 SAT. TILL 5
BAKER 5-8014

3 Catholic Groups Share In Gottry Will

Three Catholic institutions share in the estate of Charles B. Gottry, 64, of 1450 East Ave., former chairman of the board of Sam Gottry Carting Co., probate of his will in Surrogate's Court, revealed.

Beneficiaries are: Carmelite Monastery, Jefferson Road, Henrietta, \$1,000; Trappist-Cistercian Monastery of Our Lady of the Genesee, Pittsford, \$1,000, and St. Bernard Seminary, \$500, the latter for Masses.

AUXILIARIES Of The K. of C.

Ladies Auxiliary of Rochester Council Knights of Columbus will open their 1958-59 season with a meeting Thursday, Sept. 18, at 8:30 p.m. in Columbus Civic Center. The complete program for the Fall and early Winter will be presented by the Ways and Means Committee, Mrs. James Martin and Mrs. James Crowley. The Membership Drive will also be launched at this time.

Following the meeting, cards will be played and refreshments served. Hostesses for the evening are Mesdames Francis Repp, Charles Bailey, Frank Thomas and Marion McGlynn.

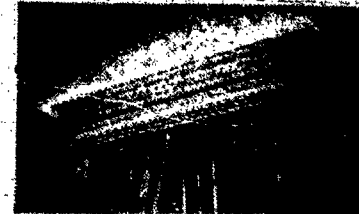
Moldings Beautify Interiors

Traditionally, moldings are used to give homes beauty and texture. It wasn't always this way. Moldings first were used in rough the same way weatherstripping is today—to seal cracks between walls, ceilings and floors against wind and weather.

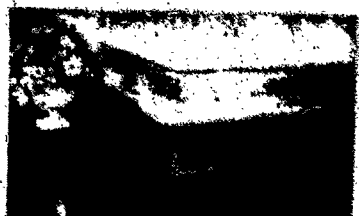
When modern building techniques made this seal no longer necessary, moldings stayed on, chiefly because they were recognized as a valuable decorating material.

Ponderosa pine moldings are available to fit all styles of decor. These fine moldings can be used as single units or combined for unusual effects, as the photographs show.

Moldings are made of ponderosa pine because this wood is light in weight yet strong, and takes nails without splitting.



Unique cornice, above, was constructed of stock ponderosa pine moldings to form a valance for window draperies.



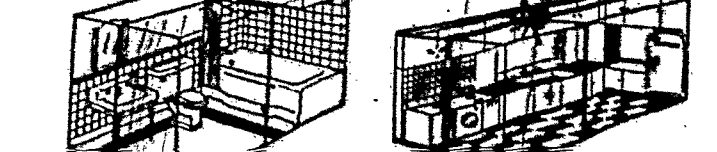
Chair rail is combination of several stock moldings.

SOAP SAVES TOOLS
Nails and screws go into wood more easily if they are coated with a thin layer of ordinary soap.

"IT'S WONDERFUL!" "IT'S EFFICIENT!" "IT'S WORRY FREE!"

Just a few of the comments from the hundreds of satisfied customers who Modernized with Weider's.

"Packaged BATHROOMS and KITCHENS"



THE COMPLETE JOB FOR COMPLETE SATISFACTION
ONE PRICE INCLUDES
CELEBRATING OUR 25th ANNIVERSARY
FREE PLANNING SERVICE GUARANTEED INSTALLATION
BUDGET TERMS Open Thurs. '58

WEIDER Plumbing
LAWRENCE A. WEIDER & SON INC.
495-501 Clinton Ave. S. • BAKER 5-8712 or 5-4046

NATIONAL HOME WEEK

SEPT. 13-20
Enjoy A Wonderful Life In A New Home Of Your Own!

Hibernians Fete St. Anne's Group

A group of men and women from St. Anne's Home was entertained at the Hibernian Club, 48 Alexander St. on Sunday afternoon.

Pupils of Desmond Penrose School of Irish Dancing were applauded as was Eileen Clifford in Irish songs. Supper was served the guests. The affair is an annual event sponsored by Monroe County Division, Ancient Order of Hibernians.

31 YEARS SERVICE NEW REPAIRED
ROOFING - GUTTERS
GREENEYS POINTED and REBUILT
ALFRED DOE and SON
CONTRACTORS
158 Roswood Ter. SU. 1414

HURRY! These Units are almost gone

BASEMENT UNITS
ALUMINUM COMBINATION SCREEN and STORM SASH
Extruded Frame Welded Corners 5 or more 10% off **\$4.75**

PEGBOARD
1/2" x 4 Ft. x 3 Ft. **\$1.25**

STOP DAMP BASEMENTS

with **CROMAR** THE CALCIUM CHLORIDE DEHUMIDIFIER PREVENT COSTLY RUST, MOLD, AND MILDEW
DRY AIR is the low-cost dehumidifier that uses Calcium Chloride, the thirly chemical that's pure, safe, and white. End damp odors, put a stop to twenty pipes... have a comfortable basement all season long. No cords, no plugs... the Calcium Chloride does all the work for you.

Easy laid on nail holes are pre-punched and require no filling. V-groove edges eliminate unsightly joints and shaven floors. Guaranteed for a lifetime. Why spend more for an inferior floor?
CROMAR Oak Flooring

9'x9' AREA 18¢
Complete Stock of Lumber • Roofing • Millwork • Hardware
FREE PARKING OPEN TILL 9 P.M. MON. THRU FRI.
Open All Day Saturday
FREE DELIVERY OPEN A CHARGE ACCOUNT

ATLANTIC MILLWORK CO.
2715 W. HENRIETTA RD. GR. 3-3311
Check Your Car Before You Travel Far

VALUE AND PRESTIGE

Exclusive Homes and Homesites

THEODORE FRANCIS Spall REAL ESTATE
23 CHARMWOOD ROAD
PITTSFORD, N. Y.
LUdlow 6-7684

50 LOT SUBDIVISION
EXTRA! EXTRA!
GRAND OPENING!

St. Joseph's Farm Henrietta
NO DOWN V. A.
\$96 PER MONTH INCLUDES INTEREST TAXES & INSURANCE
FULL PRICE **\$14,990**
CLOSE TO SOUTH TOWN PLAZA
Low Taxes. Improvements Paid. School Bus

MODEL HOME OPEN
Every Day from 1:00 P.M. to Dark
1016 sq. ft. 3-bedroom Ranch or Cape Cod on graded 120 ft. lot. Plastered walls, 11-bath basements, Formica counters, birch cabinets, copper plumbing. High, dry land.

First Offering! Exclusive Homesites... **PENFIELD WOODHAVEN HEIGHTS**
"An Island in the Sky"
OVERLOOKING IRONDEQUOIT BAY AND WOODED RAVINES

Exceptional Opportunity
RESIDENTIAL LOTS OFFERED INDIVIDUALS AND BUILDERS.
28 HALF-ACRE LOTS

- Close to transportation
- Low Taxes—Improvements Paid
- Restricted Plateau Subdivision
- School Bus

OPEN EVERY DAY 1 P.M. TO DARK

EVERY LOT OFFERS:
Beautiful View, Privacy, Convenience, Atmosphere
Buy Your Lot TODAY!

Take a good **LONG LOOK**

...then, fetch the Man of the House!

Where the housewife wins Freedom... and her man finds Peace!

PRICES BEGIN AT \$22,900
25 YEAR MORTGAGE AVAILABLE
Immediate Occupancy on some homes

MODEL HOME
Open Every Day 9 A.M. to Dark

HOLIDAY HOME

Sherwood Community
PITTSFORD