

**HOME OWNERS' QUESTION BOX**

Q—We're decorating an old house we purchased recently but the plaster walls are so chalky wallpaper won't stick. Is there any remedy for this?  
A—Coat the wall with a half and half mixture of shellac and alcohol. This will harden the plaster and give a waterproof surface to which the wallpaper will hold.

Q—We'd like to insulate the attic floor of our new ranch home but my husband and I aren't very "skilled" with tools. What do you suggest?  
A—You don't have to be handy with tools to install mineral wool

insulation. The easiest method is to use thick batts or blankets which are placed between the joists, as shown in the sketch, with the vapor barrier side down. The only tools you'll need are a sharp knife to cut the insulation



to the proper length and a piece of board to kneel on so you won't step on the ceiling. When the job is done, your mineral wool will start paying for itself in heat savings and will make your house more comfortable in all seasons. Mineral wool batts or blankets are recommended for open joists. However, if the attic has a finished floor, a professional installer can blow insulation into the hidden areas.

Q—How can I make screws hold in wood or plaster holes which have become too large?

A—Roll steel wool into a narrow wad about the length of the hole and stuff it in with a pencil point. The screw will "bite" into the steel wool, taking a firm grip.

**WEIGHT GUIDES ROOFERS**  
When roofers speak of "210-pound asphalt shingles," they mean three-tab square-but strip shingles which customarily weigh 210 pounds per square when five inches of each shingle tab is exposed as the shingles are laid on the roof deck. A "square" of roofing is the amount needed to cover 100 square feet of roof area.

**FOR SALE**

**THE CATHOLIC FAMILY CHOOSES A HOME**

112 CATHOLIC FAMILIES

PAROCHIAL SCHOOLS

A GUIDE TO CATHOLIC HOME BUYERS



**Hicks HOME HEATING CO.**

Certified Lennox Dealer

99 Norman Rd., Rochester 20, N. Y.

PHONE BR 1-9079

SERVICE and REPAIR

ALL MAKES OF UNITS

Member O.H.I.-R.G.&E. Approved

**DON'T MAKE A MOVE**

Until You Read What Our Customers Say ...

"I was more than pleased with the careful action your men took in moving."

Then, To Be Sure ... Call GR. 3-3120

For Local or Long Distance Moving

George M. Clancy

**GEORGE M. CLANCY CARTING CO.**

8 Circle St., Authorized Agents for Established 1920

**HOME Services**

**PATTERSON**

HARDWARE

LOWE 480S. PAINTS

NORGE APPLIANCES

PHONE 19

LID EAST COMMERCIAL ST.

**THE WISHING WELL**

"Where Good Friends Gather... Daily"

2190 CHILL AVENUE

Emmet J. DAILEY, Prop. GE 8-1379

**FLANIGAN'S**

FURNITURE, CARPETING

OF HIGH GRADE QUALITY

AT LOWEST PRICES

OPEN EVENINGS

337 Driving Pl. Ave.

**EAST ROCHESTER - ST. JEROME'S EAST ROCHESTER FEDERAL SAVINGS AND LOAN ASSOCIATION**

401 Main Street, East Rochester

WESTER OFFICE—34 West Main Street, Webster, New York

**Plymouth Dairy, Inc.**

388 Seward St. GE 8-0762

**Charlotte Appliance**

INC.

3288 Lake Ave.

COMPLETE HOME FURNISHING

BEST DEAL IN TOWN

Charlotte 2-4231 Charlotte 3-1111

**Glendale Grocery**

Meats and Groceries

COLD BEVERAGES

FOZEN FOODS

628 DEWEY AVE.

Open Evenings GL 3-6514

**Plumbing-Heating SERVICES SUPPLIES**

A. BURGART

GHeenfield 3-1190

2705 West Henrietta Rd.

Buy Your Plumbing from A Plumbing Dealer

**WINTON PIZZA SHOP**

21 WINTON ROAD NORTH

OPEN 'TIL MIDNIGHT FR. - SAT. - SUN.

THURS. DAYS 5 P.M. TO 10 P.M.

HU 2-2463

**ST. MARY'S, CANANDAIGUA SHENKMAN'S THE MEN'S STORE**

CANANDAIGUA, N. Y.

Clothing and Furnishings for Men and Boys

**J. F. Ribstein Inc.**

Plumbing - Appliances

Kitchen Aid Frigidaire Dish Washers - Appliances

Prompt Repair Service

561 CLINTON AVE. S. COR. ALEXANDER ST. BAKER 5-5570 - 5-5579

**Ehmann's Market**

Choice Meats

Cut to order

FREE PARKING SPACE

North Clinton at Avenue A

**GRACE'S DELICATESSEN**

378 LEXINGTON AVE. (Cor. Dewey Frozen Foods, Cold Beverages)

We Deliver - GL 3-0977

Open 1 Day Week, 8 a.m. to 1 a.m.

**JACKSON-BAILEY**

501 Thurston Rd. GE 8-7100

**REFF'S BAKERY**

Our Birthday Cakes Are Reasonable

Also: A Good assortment of delectable baked goods

629 South Ave. Phone GR 2-7118

**George H. Wilson**

GENERAL INSURANCE

REAL ESTATE SURETY BONDS

83 South Main St., Ellicott, N.Y.

**Wegman Dairy, Inc.**

465 Chill Ave. GE 8-5355

**NEED IT QUICK? 2 Hour Dry Cleaning Pressing While You Wait Silver Dry Cleaners**

245 Andrews BA 5-2422

**John Connor & Son**

SELL AND RENT LADDERS

Special Water Softener Salt

430 EXCHANGE ST. LO 2-7078

**PARKSIDE DAIRY**

EAST ROCHESTER, N. Y. PHONES 36- Hillside 2036-J

**NICK and ERWIN DRY CLEANERS**

Alterations-Dyeing-Repairing

3145 Dewey Ave. CH 2-2468

**HOUSE PAINT WHITE \$339 and COLORS gal.**

**HERKRU** PAINT STORE

128 West Main Street

**HALL'S Flower SHOP**

2075 DEWEY AVENUE

**WOOD STORM WINDOWS \$2.95**

Atlantic Millwork

2715 W. Henrietta Rd.

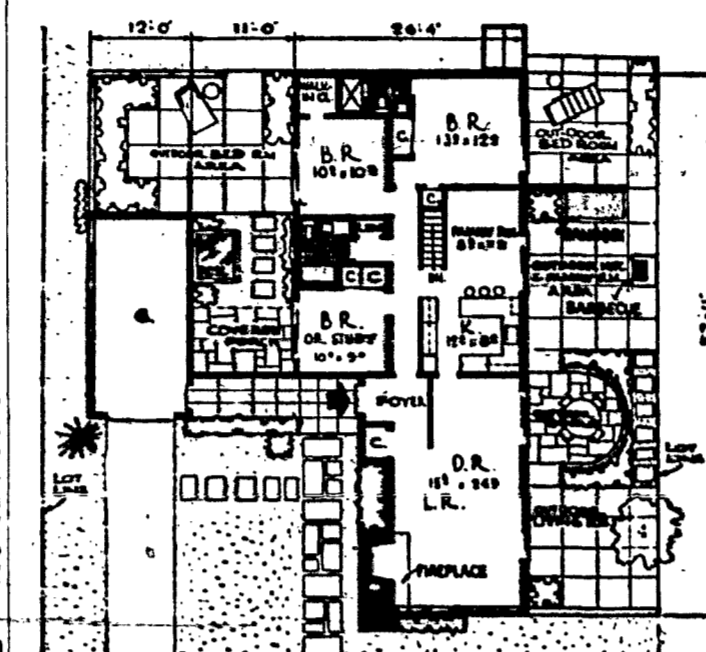
**ARNOLD'S JERH PAINTS**

EXTERIOR INTERIOR ANAMELS & FLATS

**ARNOLD'S PAINT & WALLPAPER**

279 Hudson Ave. BA 5-9124

**Design Cuts Cost of Land**



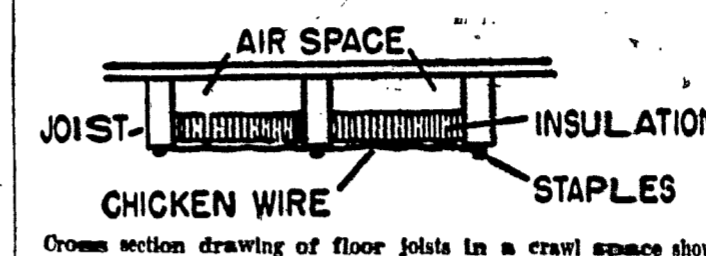
Today's rising land cost make this modern three-bedroom house ideal for a budget-minded family. The house was designed to make full use of a narrow lot for both indoor and outdoor living.

Architect Rudolph A. Matern, of Jamaica, N. Y., combined a low-slope roof of colorful asphalt shingles with natural stone and redwood siding to give the house its modern exterior.

Matern specified asphalt shingles for the roof because this type of roofing is available in a wide choice of colors, is durable, and economical to apply. Houses with low-slope roofs now can have these advantages of asphalt shingles thanks to a recently de-

**'Do-It-Yourselfer' Can Install Insulation in Crawl Space**

A house with a crawl space instead of a basement needs insulation in the floors. Without it, the floors are apt to be uncomfortably cold in winter and fuel bills may be unnecessarily high.



One simple and effective way the home handyman can install mineral wool batts or blankets in the crawl space is by using chicken wire, or poultry netting, to hold the insulation in place between the floor joists. Here's the method as recommended by insulation engineers:

Starting in one corner of the crawl space, secure the end of a roll of chicken wire to the sill. Wedge a section of insulation tightly against the sill and between the joists with the vapor barrier up and the lower edge on a level with the bottom edge of the joists.

Continue along the joists, fitting the insulation in place and stapling the wire to the lower edge of the joists so that it supports the batt or blanket. Keep

**MORGAN HOUSE REALTOR**

1110 Monroe Ave. GR. 1233

**QUINN-Built Quality Means**

EAST ROCHESTER

108 Working Terr. E. Rchstr. 677

**TRADING POST**

241 POWERS BLDG

small gap anywhere will let heat escape from the house like air from a punctured tire.

One time-saver is to use 45-inch wide chicken wire since it will cover three 16-inch-wide joist spaces. Keeping the wire in a continuous roll also speeds the job.

The Housing and Home Finance Agency recommends covering the bare ground in the crawl space with 55-pound asphalt roofing, lapped three inches or

**SAW THE AD HERE**

Tell them so! IT'S MORE IMPORTANT THAN YOU THINK ...

COURIER-JOURNAL Friday, November 30, 1956 15

more between sections and at the edges of the foundation. The asphalt keeps moisture in the ground from rising into the crawl space.

**FOR SALE HOUSES**

BRUNNEN—Will consider your home in trade—new 4 room 2 1/2 story 3 bed-room home, attached garage, best material and workmanship, ready to occupy. Gas heat, floorlock water, front 4 minutes drive to W. Henrietta Road. EDWARD GARLAND, Builder, GR 2-1451.

ST. FRANCIS XAVIER PARISH—23 Mans Street—By North Goodman area. 1941 BUILT—3 BEDROOMS, 2 BATHS, Large kitchen, wall-to-wall carpeting, double garage, hot-water heat, many details. Immediate possession. Selling South. \$11,900. BU 5-1232.

**LOT FOR SALE**

GRACE—St. John's and George Central School—Large, wooded lot, ideal site for French house. Building contract and blue-prints for specifications. NINA BALL Baker, GR 5-0000.

**AUTO OWNERS**

With the coming of Compulsory Insurance you will have to have at least \$50 before you can register your car for 1957. If your automobile hasn't once expired in the past 5 years, why not let us review your insurance needs.

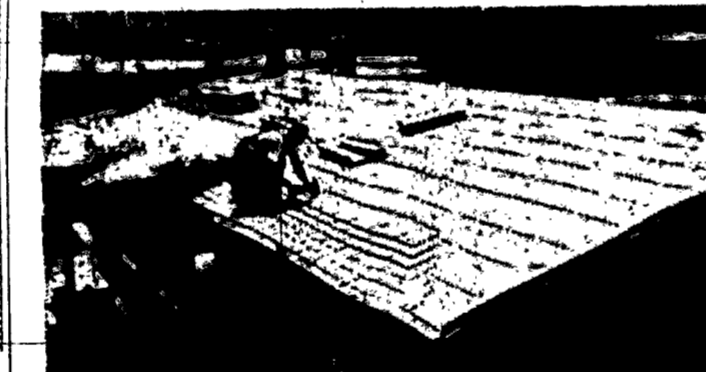
Both of our offices have small facilities to have them necessary. We also have the more complete facilities. Why not let us give you a premium quote that?

Call either office for full information.

**JOHN T. BOYD & CO. REALTORS**

11 E. Main St.—111 Dewey Ave.—1444 West Ave. 110 Times Ave. 11 South Main St. Commercial Bldg. 5 E. p.m.—WEEK END HOURS. 111 1/2 p.m.—WEEK END HOURS. 111 1/2 p.m.—WEEK END HOURS. 111 1/2 p.m.—WEEK END HOURS.

**'Moderns' Need Color, Too**



Roofers apply asphalt shingles to low-slope roof of new home.

A contemporary-style house with a colorless, low-slope roof isn't a modern house at all, according to many color stylists. To be truly modern, the color stylists say, a house must have color and color starts with the roof.

The reason so many contemporary-style homes built more than two years ago have dull-looking roofs is that until recently roofs with less than a four-inch pitch per horizontal foot could be covered only with "built-up" roofing—the same method used on industrial structures.

Today, because of technical advances in roofing application, roofs with as little as two inches of pitch per foot can be covered with asphalt shingles in any of a wide variety of pastel or darker colors.

A roof with even a small degree of slope is visible from the ground. Color stylists often suggest a light color for a low, one-story house, because a light roof creates an illusion of greater height.

Application methods have been developed for roofing as well as new construction. Asphalt shingles can be laid on top of an existing built-up roof.

**CELLAR WALLS WATERPROOFED**

We GUARANTEE a dry cellar

Free Estimates

General Mason Work and Repairs

DRAIN TILE INSTALLED

A. J. ARIENO Gen. 6-1588

**WOOD STORM WINDOWS \$2.95**

Atlantic Millwork

2715 W. Henrietta Rd.

**ANDY CHENEY - REALTOR**

**TRADING POST**

241 POWERS BLDG

**LISTEN TO**

Bishop Fulton J. Sheen RADIO STATION WWV

1200 On Your Dial Every Tue. 8:30 p.m. Co-Sponsored by radio

NOTRINAGLE'S Gallery of Homes

**JOHN T. BOYD & CO. REALTORS**

11 E. Main St.—111 Dewey Ave.—1444 West Ave. 110 Times Ave. 11 South Main St. Commercial Bldg. 5 E. p.m.—WEEK END HOURS. 111 1/2 p.m.—WEEK END HOURS. 111 1/2 p.m.—WEEK END HOURS. 111 1/2 p.m.—WEEK END HOURS.

**HOMAR**

5 bedroom homes available

Drive out today and see for yourself

**SPLIT LEVELS — RANCHES and EXPANSION HOMES from \$16,300**

Come out, stroll through... see the spaciousness designed to provide plenty of room for you and your children, your guests... of your own. Nobody's cramped for space in Homar! Move in now... finish surplus space as needed!

FEATURES: Ventilating Fans • Built-In Vanities • Overhead Garage Doors • Storm Glass • Screens • Garbage Disposers • Silent Switches • Adequate Wiring • Large Closets • Built-In Ovens • Automatic Gas Heat • Anderson Windows • Youngstown Cabinets • Fiberglass Insulation • Graded, Seeded Lots • Hall Nite Lites • Gutter and Sidewalks—(PAID) • Water Main Hydrants—(PAID) Pavements and Sewers—(PAID)

**"Live better in HOMAR!"**

**HOMAR tract**

**JOSEPH ENTRESS, builder**

Office GE 8-8490 • Residence GE 8-6084-R