



we have them! wools! dacrons! cashmere blends! nylons! cottons!

### ESQUIRE SOCKS IN YOUR EXACT SIZE

a wonderful line-up in famous-for-quality hosiery . . . For yourself, for gifts!

For the thousands of you men who prefer socks knitted to your exact size . . . here's NEWS! Handsome Esquires in so many weights, colors, yarns, styles . . . in a complete range of sizes from 10½ to 13. Whether you want the warmth of wool, the handsome look of argyles, the caressing softness of cashmere, the easy-care of nylon, McCurdy's Men's Shop has it!

For all you Christmas shoppers: here are his correct sizes in his favorite shades and types, for the gift that says: "I chose it just for you!"

McCurdy's Men's Shop, Street Floor

Phone LOcust 2-5286 (Enterprise 8088

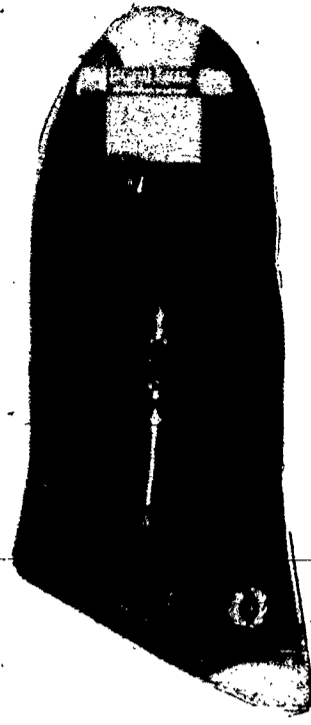
for toll-free out-of-town calls)

Or mail this coupon to McCurdy's:

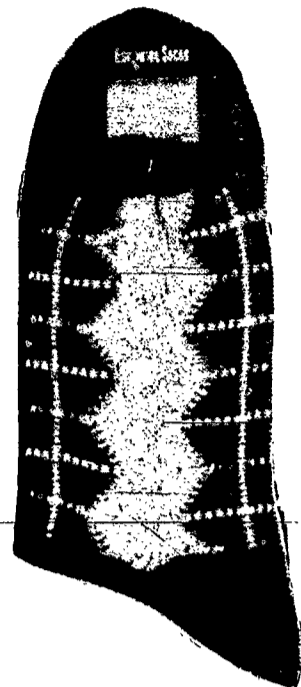
McCurdy's, Rochester 4, N. Y.  
Please send me the following Esquire socks:

Quant.	Style	Size	Color	Price*

Name: \_\_\_\_\_  
Address: \_\_\_\_\_  
City: \_\_\_\_\_ State: \_\_\_\_\_  
 Charge  Check  Money Order   
 \*Add 3% sales tax for deliveries in Monroe County



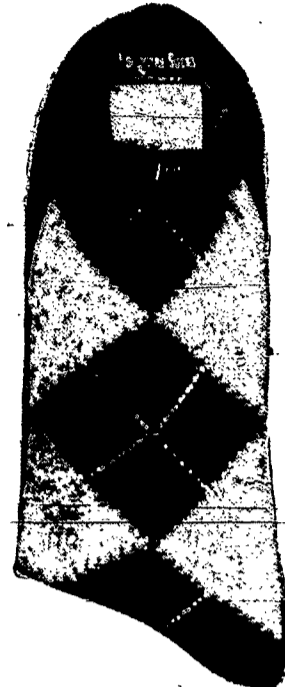
A COTTON LISLE—4-ply, with 2-color Swiss embroidered clock. Camel, cordovan, navy, charcoal, light gray. 1.25



B MEDIUM WEIGHT COTTON, outline blocks with panel pattern. Navy, cordovan, charcoal, light gray. 1.00



C 6 x 3 RIBBED COTTON, ribbed top. Navy, brown, light blue, maroon, light gray, charcoal, camel, black. 89¢



D COTTON ARGYLE medium weight. Predominating colors: Navy, charcoal, brown, camel, maroon, light gray. 1.00



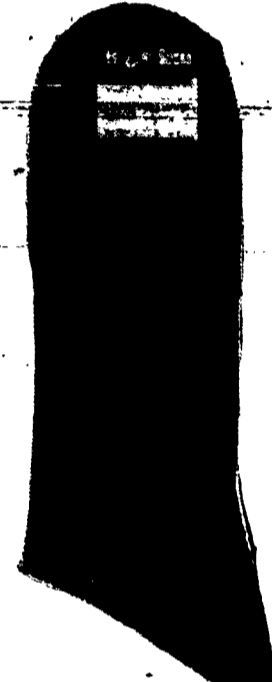
E 60% CASHMERE and 40% NYLON, luxurious blend. Charcoal, light blue, navy, cordovan, gray, camel. 3.50



F SPUN NYLON ARGYLE 2-color design. Predominating navy, cordovan, charcoal, light blue, gray, or camel. 1.00



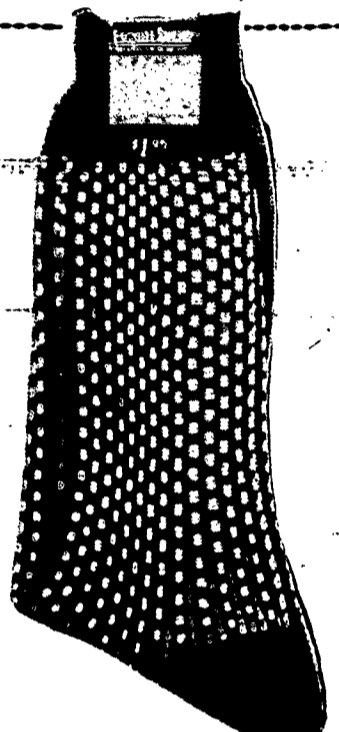
G ORLON hibull spun nylon (feels like cashmere). Charcoal, light gray, navy, black, light blue. 2.95



H DACRON-AND-WOOL 6 x 3 ribbed, medium weight. Cordovan, light gray, camel, charcoal and navy. 1.00



I ALL-WOOL ARGYLE heavy weight. Kroy processed. Navy, charcoal, cordovan, camel, or light gray predominant. 1.90



J ALL-WOOL medium weight, patterned. Five colors: Charcoal, maroon, cordovan, navy, light blue. 1.80



we have his exact size  
in seven glorious colors!

### WE ARE NEVER OUT OF ARROW GABANERO

# 5.95

check the charts below . . . if we don't have the size you want . . . between now and Christmas . . . we'll get it and give it to you with our compliments.

Gabanero is at McCurdy's Men's Shop in your exact collar size and sleeve length. This famous Arrow sport shirt is tailored to fit you perfectly, handsomely. Smooth "Sanforset" fabric, detailed with button-through pockets, saddle stitching and the comfort-designed Arrowfold collar. The Christmas gift certain to please every male on your list!

Come In! Write! Or phone LOcust 2-5286 (Enterprise 8088 for toll-free out-of-town calls.)

McCurdy's Men's Shop, Street Floor

SAND  
BLUE  
LIGHT  
GREEN

	14½	15	15½	16	16½	17	17½
32	✓	✓	✓	✓	✓	✓	✓
33	✓	✓	✓	✓	✓	✓	✓
34	✓	✓	✓	✓	✓	✓	✓
35	✓	✓	✓	✓	✓	✓	✓
36	✓	✓	✓	✓	✓	✓	✓

WHITE  
RED  
CHAR-  
COAL  
GRAY

	14½	15	15½	16	16½	17
32	✓	✓	✓	✓	✓	✓
33	✓	✓	✓	✓	✓	✓
34	✓	✓	✓	✓	✓	✓
35	✓	✓	✓	✓	✓	✓