

Clifton Springs Ham Dinner Set

Clifton Springs — The Holy Name Society of St. Felix Church will sponsor its annual ham dinner on Wednesday, Nov. 14 in St. Felix Hall, Main St. Frank DeMarco, president, is heading up the committees in charge of serving continuous from 5:30-7:30 p.m.
Tickets may be purchased at the door in addition to the advance sale.

161 N. Main St. - Elmira
Opposite Mark Twain

RUPTURE EASER
Makes Life Worth Living FOR MEN, WOMEN, CHILDREN

Gerould's DIAL 6946
INC. PHARMACY
50 Main and Hudson Streets
ELMIRA, N.Y.

DAIRY QUEEN
FOR EASY TO FIX DESSERTS AT HOME
A TREAT FOR TASTE • A FOOD FOR HEALTH
QUARTS • PINTS
HALF GALLONS
BUD & BILL RYLL
712 Lake St. - near 5th

Sheely Bros. FLORISTS
D. J. FROSOLONE, Mgr.
Flowers for All Occasions
DIAL 37117 OR 37118
101 SO. WALNUT ST. ELMIRA
For Your Convenience, Our Store is Open Every Day
'til 8—Sundays 'til 4 P.M.

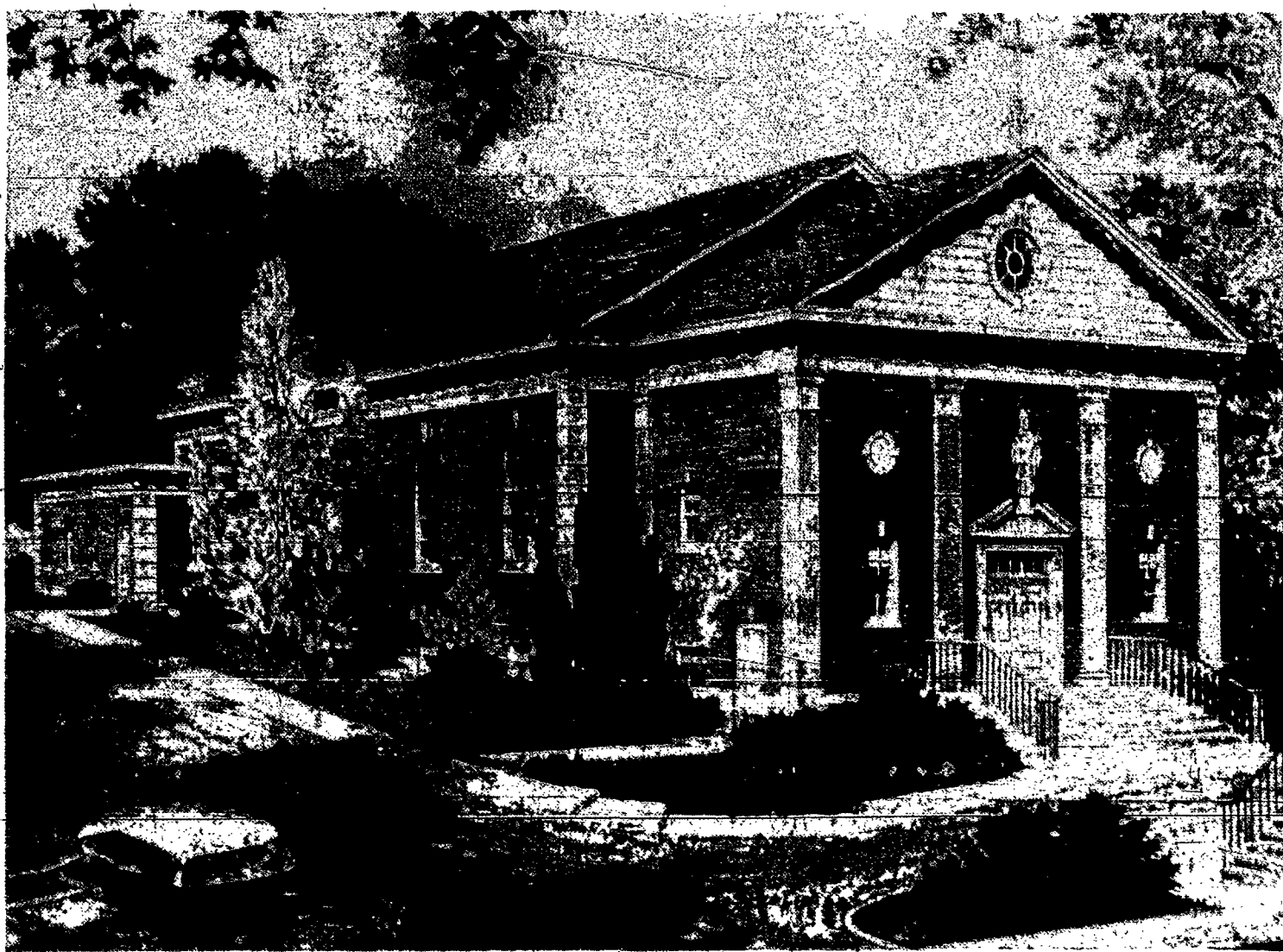
HEATH DRY CLEANING CO.
(Lockwood Cleaners, Inc.)
MR. & MRS. JOSEPH G. BACKES, MANAGERS
DIAL 4737
PICK UP AND DELIVERY
PLANT AND OFFICE 950 S. MAIN ST

KAIN'S SERVICE STATION
TUBNEY KAIN MANAGEMENT
GAS - OIL - BATTERIES - LUBRICATION - WASHING
ACCESSORIES - TIRES - TUBES
"Service With A Smile"
DAVIS & SIXTH STS. DIAL 29785

BE THRIFTY
DIAL 50-50
ELMIRA'S LEADING RADIO CONTROLLED TAXI SERVICE
TOWNER TAXI

KEEFE FUNERAL HOME
436 BROADWAY
PHONE 4344 ELMIRA, N. Y.

Dial 2-3183 404 W. Washington Ave.
FINE WINES and LIQUORS
Preston's Liquor Store



ARCHITECTS' DRAWING of the proposed new church of Georgian Style for St. Patrick's Parish, Macedon. Construction of the edifice is expected to begin in the spring according to the Rev. Bernard C. Hanna, pastor. Haskell, Considine, Haskell of Elmira are architects. The church will be located at Main St. and West.

Macedon Parish Plans New Church

Plans for a new church edifice of the Georgian Period, an adaptation of the Italian Renaissance style were announced for St. Patrick's Parish, Macedon, today by the Rev. Bernard C. Hanna, pastor.
The building, construction of which will start in the spring, is to be located at the corner of Main St. and West St., west of the rectory and facing on Main St.

APPROVAL of the Diocesan Planning Board was given to the plans, Father Hanna said. Haskell, Considine and Haskell of Elmira are the architects.
Architects' plans call for a building built of concrete foundations, cinder block walls faced with brick and trimmed in stone and wood. Interior walls and ceiling will be plastered. Floors are to be covered with an asbestos vinyl and the trim throughout will be of wood.

Style of the Georgian Period was selected for its appropriateness to the American Colonial, which is more frequently found in communities the size of Macedon.

BECAUSE THE site has an upward slope from West Main St. towards the north, grading and paving will be required. The main entrance will be accomplished with a number of steps which makes for an impressive facade and approach to the building. For those unable to climb these steps, the site allows for a side entrance practically on grade.

Included in the landscaping are two rather large off-street parking areas accommodating approximately 53 automobiles and sufficient driveways for easy circulation to and from the Church. The rectory will offer easy access for the Clergy.

MAIN ENTRANCE to the Church consists of exterior steps to a two-level Narthex or Vestibule; to the right on the lower level is the Baptistry and on the left is a stairway which leads to the Hall below the Church.

At the upper level of the Narthex and to the left is a "Crying Room" while straight ahead are the entrance doors to the Nave. The "Crying Room" is a sound-proof room with comfortable accommodations for parents with small children who can attend Mass without the embarrassment of disturbing their fellow parishioners. The room is equipped with a large observation window facing the Sanctuary and a sound system for the purpose of listening to the celebration of the Mass.

The Nave is entered from the vestibule through a pair of doors

flanked with glass sidelights. On the Epistle side on entering is the Confessional; on the Gospel side, the "Crying Room." The Nave has a seating capacity of 336 persons.

THE SANCTUARY is separated from the Nave by an ornate mental wood Communion Rail and one step. To right and left are the Shrines or Side Altars. In the Sanctuary center is the High Altar with Predella and a canopyed Reredos. All Sanctuary furnishings and appointments are to be in Georgian Style.

Speaker Urges All Nations Serve Christ The King

Hornell — If half of the energies nations expend opposing each other were combined in service of Christ, their King, this would be a great world, the Rev. Leo E. Lynch told a First Saturday luncheon group.

Father Lynch, chaplain of St. James Mercy Hospital, was guest speaker at the luncheon honoring Our Lady of Fatima which was held at the Moose Club under sponsorship of the Steuben Diocese, Diocesan Council of Catholic Women.

The speaker talked on Christ the King, whose feast is observed in Catholic churches throughout the world on the last Sunday in October.

"This year, the Feast of Christ the King has special significance in the light of the great unrest in Europe and the Middle East. Deep feeling of nationalism are prevalent today. Although we are filled, and rightly so, with loyalty and patriotism for our own beloved country, our first allegiance is to Christ, our King," Father Lynch said.

THE PRIEST quoted Scriptural references to the Kingship of Christ, which were climaxed by Christ's answer to Pilate's question, "Art thou a king then?"

"Our Divine Lord answered Pilate directly in the face of certain death he knew it would mean when He said, 'Thou sayest it,' and 'For this was I born and for this I came into the world,

that I should give testimony to the truth.'" Father Lynch continued.

"In spite of our many difficulties and failures, however, we can take courage from almost the final scene of Our Lord's life on earth. The thief, crucified with Him asked Our Lord to remember him when He should come into His kingdom. The robber had only two things to offer Christ—faith and remorse—yet his plea brought forth the stunning words of Christ, 'Amen I say to thee, this day thou shalt be with Me in Paradise.'" Father Lynch concluded.

The Rev. Leo J. Mans, assistant pastor of St. Ann's, served as spiritual director for the Steuben Diocese at Saturday's luncheon. No director for the deanery has been appointed since the Rev. Richard A. Hart was transferred to Fairport.

Father Mans said that Father Hart's leaving is a "loss not only to the DCCW; to the young people but to the whole city of Hornell."

Mrs. Frank Hornbeck, deanery president, presided at the luncheon. There were 50 women present from Hornell and vicinity.

NOTICE
TO BETTER SERVE YOU—
WE HAVE MADE A CHANGE IN OUR TELEPHONE SERVICE—OUR NEW NUMBER IS
3-5601
CHARLES F. HUGHES & SON
FUNERAL HOME
SINCE 1896
DIAL 3-5601
YEAR-ROUND AIR-CONDITIONING OFF STREET PARKING

See Our Beautiful Display Of
CHRISTMAS CRIB SETS
Greeting Cards for All Occasions
And An Outstanding Selection of
FINE RELIGIOUS CARDS FOR CHRISTMAS -- PERSONALIZED IF YOU WISH
RELIGIOUS ART SHOP
Mary Louise McManus
Open Daily 9 A.M. to 9 P.M.
Phone 27109 808 GROVE ST. Elmira, N. Y.

Sheehan's in Elmira
CELEBRATES
"ROUND-UP DAYS"
featuring Hopalong Cassidy

Bring the youngsters to the big parade tomorrow... then on to Sheehan's, where savings galore are waiting for you in every department! Don't miss the special values in our girls' and boys' departments... values like these shown... plus many more! See you tomorrow!

BIG NEW SHIPMENT
Holiday Styled
PRE-TEEN DRESSES
Regularly Priced \$8.95 - \$14.95
\$6.99

Plan ahead for plenty of party-going with the Holidays fast approaching. Take advantage of this specially priced group of colorful new dresses from one of the most famous manufacturers of pre-teen styles. You'll find rustling taffetas, gleaming silk-and-cottons, novelty rayon fabrics, all with floaty bouffant skirts... some with their own petticoats. Sizes 8-14.

Pre-Teen Dresses... 2nd Floor

FAMOUS NAME
Girls' and Pre-Teen
ALL WOOL COATS
Values to \$35.00
\$22.00

A wonderful group of coats in all wool fests, warmly lined. Purchased from a famous maker of better coats to bring you extra value at extra savings. Every coat buttons snugly for the throat... features many an interesting back detail. Sizes 7-14 and 8-14.

Girls'wear... Second Floor

BUY NOW AND SAVE!
Little Girls'
HOLIDAY DRESSES
Sizes 1-3 and 3-6x Regularly \$3.98
\$2.98
Sizes 7 to 14 Regularly \$4.98
\$3.98

Full-skirted nylons and cottons... many with their own billowy petticoats. All are guaranteed washable, with some drip-dry fabrics included. Lovely colors.

Girls'wear... Second Floor

SPECIAL PURCHASE
Washable Corduroy
BOYS' SLACKS
Comparable to slacks selling for as much as \$3.50
\$2.88

Carefully tailored, pinwaive corduroy slacks... with zipper closing, walk-hugging elastic sides... neat fitting from crotch through dark. Washable, too... saves you dozens of expensive cleaning bills. Guaranteed first quality. Your choice of brown, grey, navy, green. Sizes 6-12.

Boys'wear... Street Floor