

CHRISTMAS GIFTS

"The Religious Gift Is the Treasured Gift"
Use our lay-away plan and select your Religious Christmas Gifts now. Wide choice of Missals, Prayer-Books, Rosaries, Statues, Pictures, etc.

Our Christmas Card Display Is Beautiful Now!

Tucker's
INC.
300 Main-St. E.



APPLES

Fresh Picked & Graded

Macintosh
Twenty Ounce
Cortlands
Northern Spy
R.I. Greenings

Snow-Red Romes-Baldwins
EXTRA FANCY Red Delicious
Also Golden Delicious, McCoun

SPECIALS

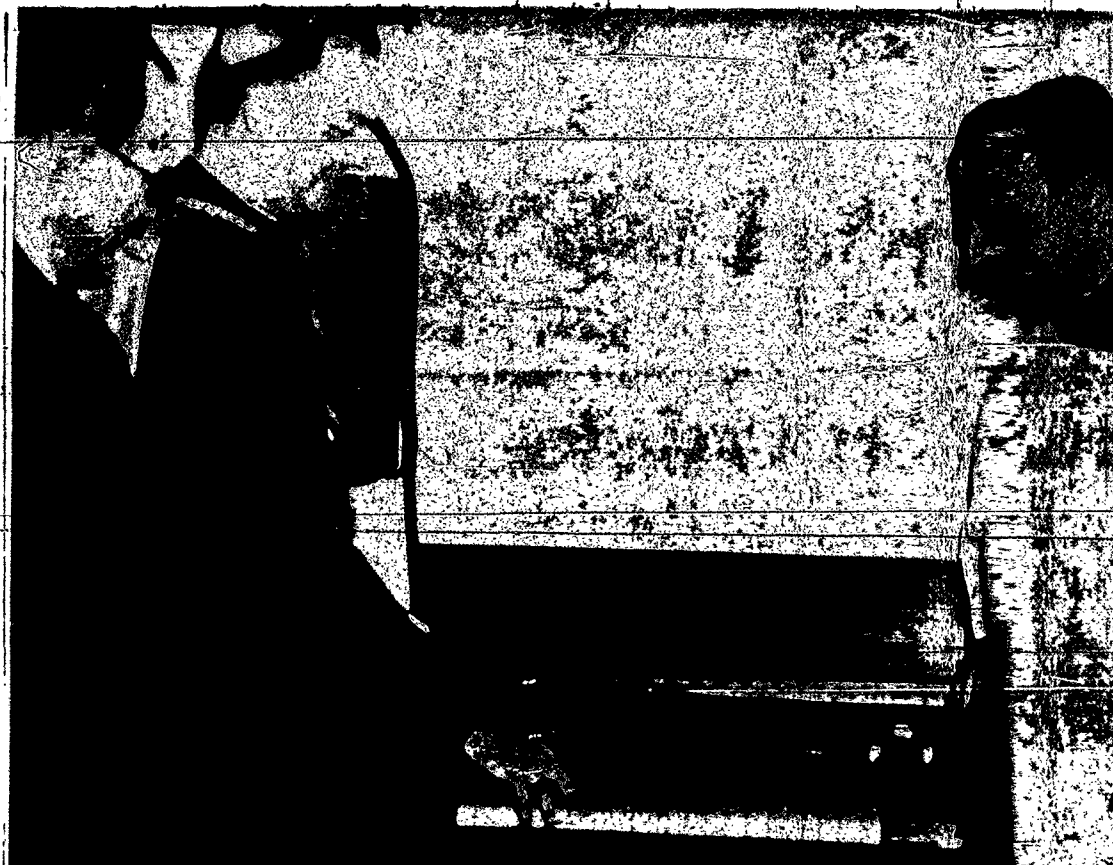
30 Ounce **APPLES \$1.19** Medium Size
BALDWIN **APPLES \$1.19**
Windsor By Hand-Picked

WINTER **POTATOES** | **SQUASH**
Buy By The Basket and Save!

PLEASE BRING YOUR OWN CONTAINER

NEW STORE HOURS
9 AM to 7 PM Every Day
9 AM to 9 PM FRIDAY

VER HULST BROTHERS FARM MKT.
Your Modern Indoor and Outdoor Market
1253 Ridge Rd. W. at the Mt. Road
Glen. 3-5151



Georgetown's Electric Carillon

GIFT OF ED SULLIVAN, TV star, the new "Electric Master" electronic carillon at Georgetown University is shown after having been blessed by Auxiliary Bishop Philip M. Hannan, (second from left). The carillon was built by Stromberg-Carlson of Rochester and installed by Tempo Electronics, of Washington. Also in photo are: A. G. Schifano, (left) vice president of Stromberg-Carlson who made the presentation and the Very Rev. Edward E. Bunn, S.J., Georgetown University president.

\$1,000,000 To Improve St. Joseph's Hospital

St. Joseph Hospital, Elmira, which has sought no expansion funds in thirty years, is launching a campaign for \$1,000,000 to erect three new wings and alter sections of the present building, according to John E. Sullivan, chairman of the board of directors.

(A dinner of community leaders on Thursday, Nov. 2 in Mark Twain Hotel, Elmira, with His Excellency Bishop Kearney as principal speaker will open the campaign. See page 1).

Sullivan said that since the addition of the Medical Wing in 1931, the patient load has increased more than 100%. "This year," he added, "our admissions are running at a rate of 9,000 patients, highest total in the hospital's 48-year history."

THE RISE in admissions has been accompanied by a gain of 105% in laboratory analyses in the past five years. Sister Mary additional emergency delivery

garet Adelaide, the hospital administrator reported. The effect of increasing work in every phase of the hospital's professional services had compelled the institution to devote critically needed private rooms to the expansion of these services, she said.

The hospital board, Sullivan said, had considered several plans for relieving pressure on the hospital's facilities.

"Our emergency department, occupying very limited space on the ground floor of the Medical Wing, had 3,163 cases in 1955. Last year it had 7,652 cases. St. Joseph's cannot be expected to handle increases of such proportions," Sullivan said, "in the restricted space available."

THE HOSPITAL board, with the concurrence of the medical staff, concluded that a new three-story wing on High Street, connecting the Medical and present Maternity Building, would solve several problems, Sullivan said.

"The ground floor of this new wing will house both the emergency and admitting departments," he explained, "providing waiting rooms, interviewing, and examination rooms. Emergency facilities will be expanded to include a suite of three operating rooms, a minor surgery room, nurses station, space for stretcher and cart storage, and two private rooms. The two upper floors of the building will become an extension of the Medical Wing, providing twenty-six additional beds."

DESCRIBING THE dietary situation as one of her most "serious problems," Sister Margaret Adelaide said the kitchen, occupying ground floor space in the Surgical Wing, had scarcely been altered since it was placed in service in 1922.

"At that time," she said, "our admissions were a little over 2,000 annually. Now we are serving about 90% more meals. The kitchen is greatly congested. It is too small for cooking, baking, salad making, and load of the tray carts. Kitchen refrigerators are too small and the heat in their present locations cuts their efficiency."

"Storage facilities are inconveniently located down a corridor leading to the Nurses' Residence. Our special diet kitchen should adjoin our kitchen," she said, "but is actually isolated by a corridor."

The new plans provide for a new two-story Dietary Wing, adjoining the present facilities, which will permit the expansion and rearrangement of all dietary facilities. A cafeteria, coffee shop, and a new diet kitchen are planned. New walk-in refrigerators will be installed. Areas are provided for cooking, baking, salad preparation, and tray cart loading. A dietetics classroom for student nurses is included.

THE FIRST FLOOR of this wing will house the medical records and medical library. The doctors lounge and a convenient dictation room will bring together scattered facilities located in private rooms and improvised space on various floors.

A new single story Receiving Wing on DeWitt Avenue will extend from the Surgical Wing to the Dunn Memorial Nurses' Residence. It will provide a receiving entrance and office, purchasing and accounting offices, and space for dietary and general storage.

The sixth floor of the main building will be extended to include the present promenade, which will be walked in. This will become the obstetric floor, providing a suite of five labor rooms, two large delivery rooms, and an room.

Three nurseries will provide 33 cribs, a premature nursery for

ten infants and a suspect nursery are also included. A doctors lounge and bedroom, a day room for patients, and a day fathers' room are provided.

The usual requirements of a nurses' station, lockers, examination and utility rooms, medical storage, and packing and sterilizing facilities are a part of the plans, which also include a class room for nursing students. A total of thirty-two beds will be available on this floor.

Some alterations on the fifth floor of the main building are planned to expand the radiology department and the operating suite, with air conditioning of the latter.

Four high speed elevators will improve service to all floors.

Catholic Woman In Civic Life

Chicago — (INC) — A panel on "Catholic Woman In Civic Life" on November 10 in the Conrad Hilton Hotel, theory in his respective field, here during the 25th annual convention of the National Council of Catholic Women.

A separate aspect of the participation of the Catholic women in civic life will be discussed by each of the speakers.

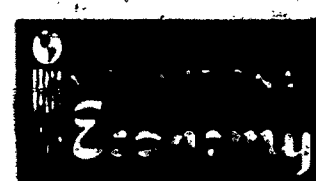
POLITICAL ADVERTISEMENT

VOTE FOR & ELECT PAUL H. ANDREWS
Democratic Candidate for the STATE ASSEMBLY, 4th Dist.
Paul Andrews says, "If elected I shall represent all the people in my district — not just those of one party. It's a full time job and can't be combined with any other — if it's done right!"
Pull Lever #6, Row "B"
and Bring Back Good Gov't to the 4th District.

Changing To Automatic

GAS HEAT?

REPEAT OFFER. Investigate This Opportunity. It's The Best Buy In A Decade



\$395

GAS DESIGNED UNIT COMPLETELY INSTALLED FOR

NOTHING TO PAY TILL NEXT APRIL

Call Today For Free Estimate... No Obligation

R.G.E. Approved Heating Contractor

ROCHESTER AUTOMATIC HEATING CORP.
1451 LAKE AVE. Near Kodak Glenwood 3-8569
OPEN SAT. 'TIL NOON, AND EVE'S. BY APPOINTMENT

Edwards
phone BA 5-7100

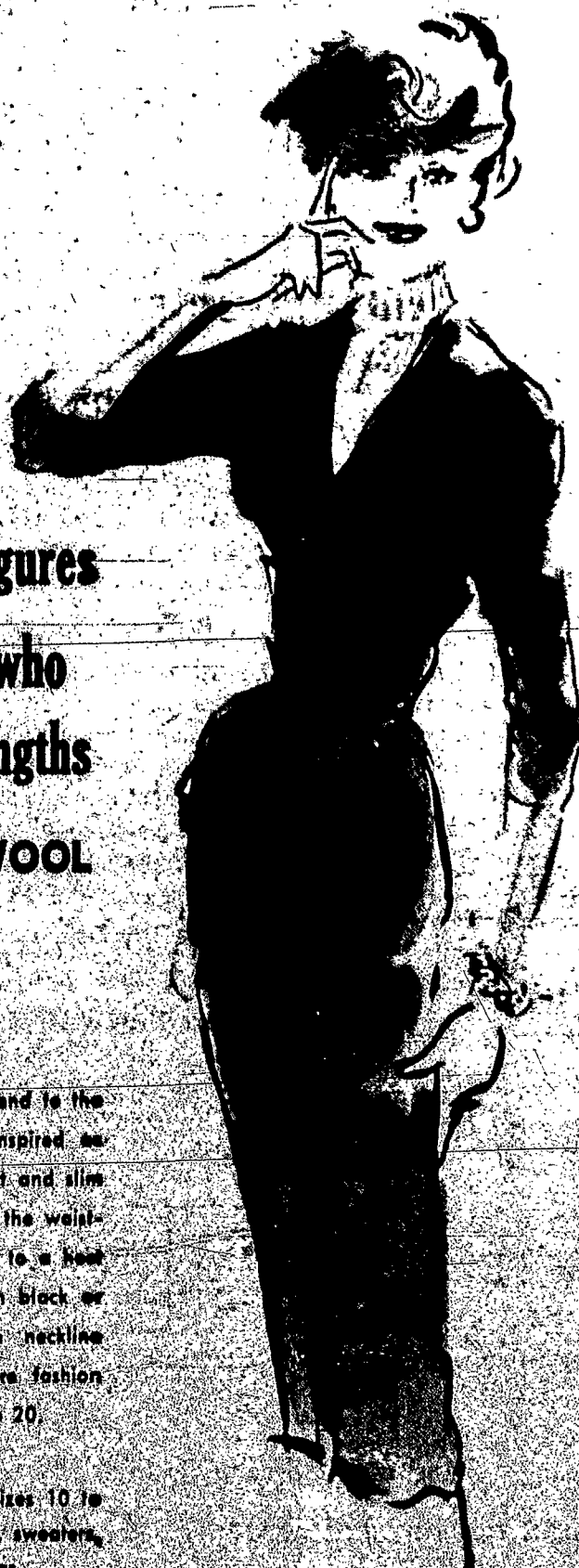
for **TALL** figures
and women who
like longer lengths
100% PACIFIC WOOL

22.98

Half-length long-sleeved, a goodie to the "fall" wardrobe, is French-inspired as you could wish. A sheath, skirt and slim bodice that buttons to below the waistline. Long, 3/4 sleeve bodice to a hood of brocade... charming in black or navy. Removable knit turtle neckline. Slacks, great accent for more fashion. (Playboy) your smart size 12 to 20.

Other "tall" girls' fashions, sizes 10 to 20, and 28 to 42. Also skirts, sweaters, cardigans, bras, slips and pajamas.

EDWARDS — Tall Girl — 22nd Floor



S-H-H-H! we'll let you
in on the big secret!

It's the biggest news in town! People are telling their neighbors... phoning their friends... hearing it on the grapevine. Everybody's raving about Top Value Stamps... I received my catalog in the mail. It's simply terrific!

STAR MARKETS

NOW GIVE

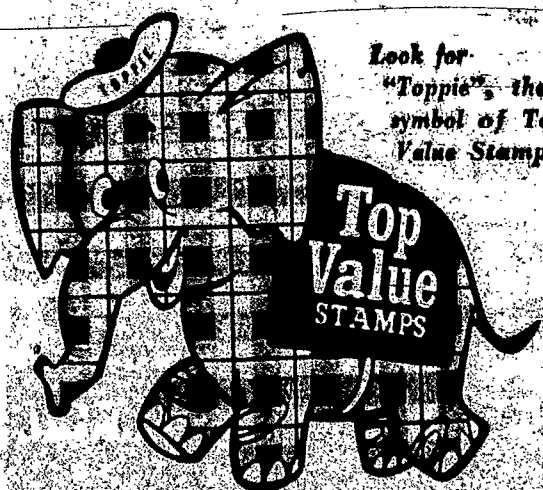
Top Value Stamps

Now Star Markets join with several thousand large Food Markets across the nation to bring you the finest and fastest-growing Stamp Plan!

You receive a Top Value Stamp with every 10¢ purchase... choose from hundreds of wonderful, famous-brand gifts in the Top Value Gift Catalog!

- ★ FINER MERCHANDISE
- ★ 1 REDEMPTION STORES
- ★ GREATER VARIETY
- ★ BETTER VALUES
- ★ EASIER TO SAVE!

Every Dividend Certificate Is Valid and May Be Redeemed With Top Value Stamps!



Look for "Toppie", the symbol of Top Value Stamps!