

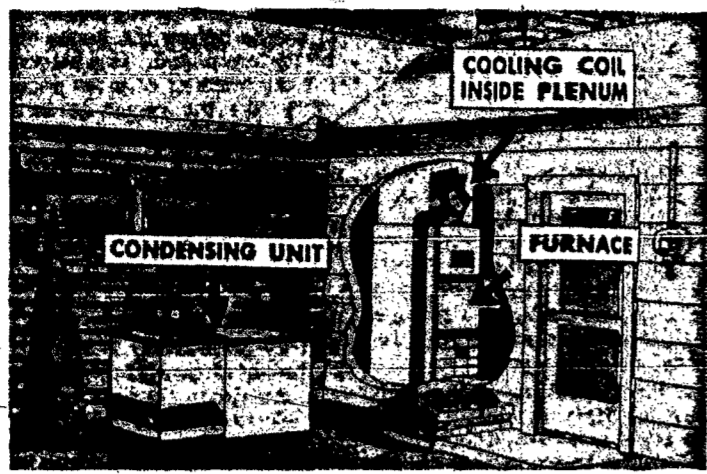
## "Holiday House"

(Continued from Page 9-A)

a city with a high record of year-round employment and exceptional per capita credit rating, provides a locale with the greatest human interest potential for this collaborative project. Her selection of Rochester was inspired by good reasoning. Far more impressive to her readers than a backdrop of Hollywood, Miami or Las Vegas, the City of Rochester is as down-to-earth as the budget she aids her young readers to live within.

**Personalities In The Views**  
John Borelle, builder of Pepperidge Homes, is fully informed on the needs of a large and lively family having five children and two grandchildren of his own. It is evident that he has been

## Air Cooling Added On

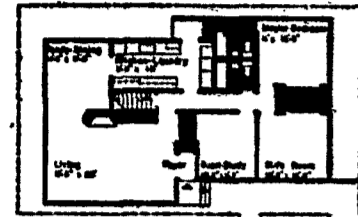


Essential elements of "add-on" summer air conditioning are shown in drawing by Coleman Company. Condensing unit goes outside the house, and a cooling coil goes inside the plenum chamber of the furnace. This kind of central air conditioning can be added to a forced warm-air heating system.

One type of central summer air conditioning has been especially designed for home modernization.

This is "add-on" air conditioning. As the name indicates, the air conditioning equipment is simply added to the existing heating system.

Forced warm-air heating is necessary in the first place. Although he might not know it, the



Traffic-flow ease promotes a simple home task.

successful in creating a house that is easily maintainable, which

(Continued on back page)

## Home Ownership Is STABILITY

—IN ALL KINDS OF ECONOMIC WEATHER



One of the most basic of all investments is a home for the family. It is more than an investment of cash, a hedge against misfortune; it is an investment in happiness and in a better life for the whole family.

INVEST IN HAPPINESS FOR THE ENTIRE FAMILY

## Visit DEWEY MANOR Now!

OFF 4559 DEWEY AVE. NORTH OF LATTA RD.

- ★ Well-Proportioned HOME SITES AVAILABLE
- ★ FURNISHED MODEL HOME ON TRACT
- ★ NEW HOMES In Various Stages of Construction

**LaDUE & FITCH, INC.** CHer. 4304  
HUBbard 1361

2. A condensing unit is installed outdoors.

3. The condensing unit, in which the refrigeration machinery is contained, is connected to the plenum cooling coil by copper tubing.

This is Coleman's explanation of how it works:

1. The condensing unit cools a refrigerant gas. In some types of units, the gas is immediately used to cool a liquid within the condensing unit.

2. Either the refrigerant gas or the chilled liquid flows through the copper tubing to the cooling coil and chills it.

3. The furnace blower, or fan, forces air past the cooling coil. The cooling coil chills the air.

The cooling coil chills the air.

2500 Home, Farm and Business For Sale Through

**BEDNARZ REALTY**

Realtor  
OPEN EVENINGS AND SUNDAYS  
363 Hudson Avenue, Room 981, A.D.  
BAKER 8441 COngress 2790

**W. A. FELDMAN Realtor**

1451 LAKE AVE. GL 3561

Specializing  
SACRED HEART ST. JOHN'S  
ST CHARLES PARISHES

Photos of All Listings - Res. Ul. 8444



## THE CATHOLIC FAMILY CHOOSES A HOME

57 PAROCHIAL SCHOOLS  
Near Church and School  
142 CATHOLIC PARISHES

CATHOLIC HOME BUYING STARTS HERE



A GUIDE TO CATHOLIC HOME BUYERS

## Walk-In Basement To Be Feature Of Lakeview Showing

Caldwell and Cook, builders and developers of the impressive Lakeview residential tract off Latta Road between Dewey and Lake Avenue in Our Mother of Sorrows parish, have announced that a new Model Home in Section 9 will highlight a large walk-in basement in reply to many requests for this feature.

"The natural contour of the land in this section as it affects several lots, lends itself admirably to this popular design", sales manager Dick Holden pointed out.

The new construction boasts a lower-level patio leading into a high-glassed basement that provides considerable recreation area for children. It could be further developed into a family television theatre, festive barbecue room or just a convenient all-weather rumpus room, Holden stated.

The builders report considerable Catholic home-buyer interest in the new section due to the playground facility appropriately named the "Tot's Lot".

## Science Gives Improvement In Millwork

Modern millwork — windows, doors and kitchen cabinets — makes for easier, better-looking



Modern paneled doors and panels are available in a variety of modern and traditional designs to blend with the styling of any home. Colonial door is pictured. Less costly, longer-lasting remodeling. Science has made the differ-

ence. Chemists have come up with preservatives that lengthen also — Improves wood's natural life of windows and doors ability to take paint. Most paint and that all but top wood's ab- failures, such as peeling, crack- sorption of moisture, preventing ing, and bubbling, are caused by shrinkage and expansion and as- the presence of moisture beneath the painted surface.

COURIER-JOURNAL Friday, May 25, 1956 9-A

Appearance Improved This advantage is particularly welcome because of the importance of color styling now.

## A home with a perennial "holiday" air "Holiday House"

as seen in LIVING FOR YOUNG HOMEMAKERS furnished by McCurdy's



OPENS TOMORROW-SATURDAY 12 NOON TO DUSK

SAME HOURS SUNDAY... AND DAILY THEREAFTER

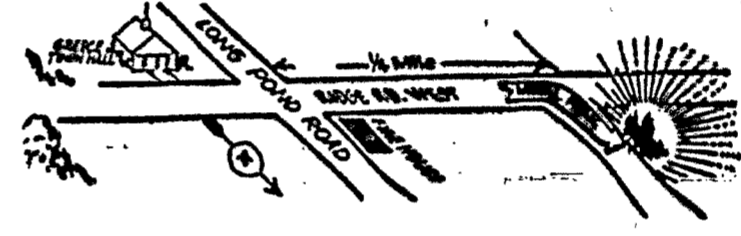
A visit to this delightful three-bedroom home as featured in America's outstanding magazine for young homemakers will be an unforgettable experience!

Maintenance has been held to an absolute minimum throughout. You will delight in the General Electric "Kitchen Center" with motorized window for instant convenience for the housewife.

Budget-priced to be contained easily within the home-purchase figure that you have planned upon. Budget furnished and decorated by McCurdy's decorator staff in cooperation with the nation's leading manufacturers!

It is really something to see... and own!

DIRECTIONS



## Pepperidge Homes, Inc.

OFF 2824 RIDGE ROAD WEST

GLENWOOD 6455



## WE'RE STEPPIN' OUT...

with a brand new "WALKOUT" basement model . . .

You're going to love this house. A full, spacious family room basement walks out to your "outside living room" . . . quickly, easily, privately.

It's a home designed for young families that need to stretch 'n play . . . indoors and out! We're proud to contribute to a major trend . . . and to build a house that makes comin' home a special event . . . the whole year 'round.

From \$16,000 to \$22,000

section 9 opening today . . .

Early seekers will have their "pick" of lots in our newest LAKEVIEW subdivision. Section 9 includes more than 90 choice lots, a lovely, winding creek and a well planned playground.

Visit us, today. You'll see our signs off Latta Road, between Dewey and Lake. Open daily, from 9 to 5.

