

For saving or trying to save  
the 166 Boy Scouts were honor-  
ed in one year for heroism by  
the National Court of Honor of  
the organization.

**RAYCREST HEIGHTS**

ST. AMBROSE SECTION—The High  
Point of Ironwood offers the Pan-  
oramic View. Stylish ranches and  
split-levels. Many, many extras!!  
All city improvements plus storm  
windows, screens, finished and wood-  
ed lots. For full information and  
inspection, call

HD 6408

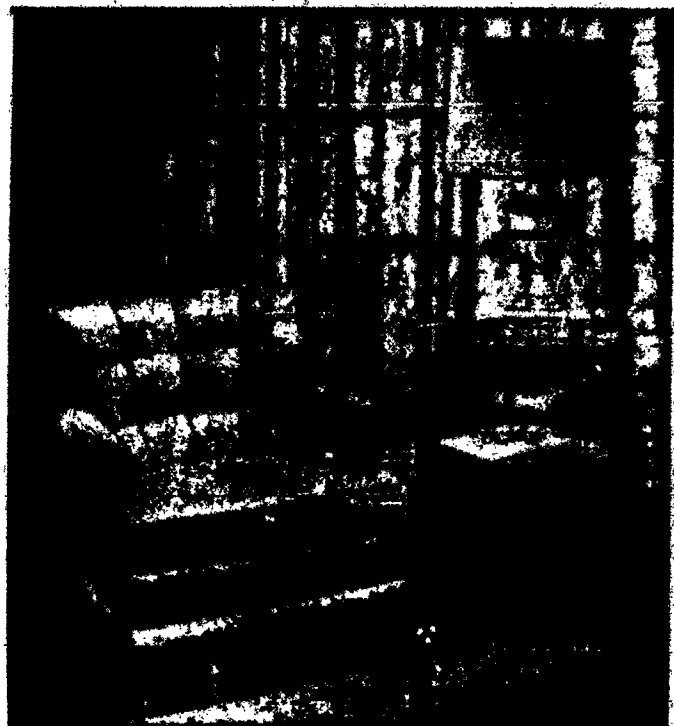
**GIANACK  
REALTORS**

LIST . . . BUY . . .  
OR SELL . . .

With a Member of  
ST. MARGARET MARY'S  
PARISH

Lewis J. Van Coske  
Congress 7026 with

**A. J. PETRANTO**  
REALTOR  
528 POWERS BLDG.  
GL 3479 LD 5379



This new chair will fill the homemaker's need for a chair that is small in scale but big in comfort. The seat and back are foam rubber. The contemporary styling complements the trend to the Italian Provincial look in furnishings, as is the step table.

**Wins Award For Design**

sign awards in the annual Pro-  
fessional Competition for Better  
Catholic Institutional Design,  
sponsored by Church Property  
Administration, magazine of  
Catholic architecture and admin-

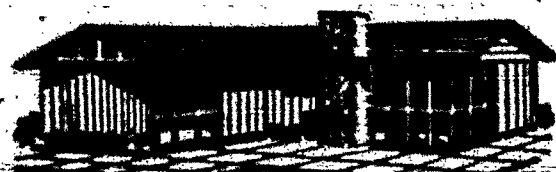
istration was won by Mount Car-  
mel High School of Auburn.  
Entered in the category of "A  
High School accommodating no  
more than 1,000," the Auburn  
high school conducted by the  
Carmelite Fathers with Beards-  
ley and Beardsley, A.I.A., archi-  
tects took second place to Acad-  
emy of the Sisters of Mercy,  
Gwynedd Valley, Pa. and Ben-  
edictine High School of St. Schol-  
astica Parish, Michigan.

First awards and the Distinc-  
tive Design Awards in five cate-  
gories of institutional buildings  
constructed and completed since  
Jan. 1, 1950 were made by five  
architects, the 1956 jury.

On the jury were: Brother  
Cajetan Baumann, O.F.M., A.I.A.,  
New York; Frank Montano,  
A.I.A., Head of the School of  
Architecture, University of No-  
tre Dame; Paul C. Reilly, A.I.A.,  
New York; George B. Beatty,  
A.I.A., Brooklyn and George J.  
Sole, A.I.A., New York.

**Fund For Pope**  
Bogota, Colombia (NC)—A  
national collection is being taken  
up here in honor of the Pope's  
80th birthday. The money collect-  
ed will be distributed among the  
poor.

**YOUR HOME IS  
YOUR CASTLE**



Whether You're Building or Remodeling You Can  
Be Sure of the Finest Materials Coupled with an  
Experienced Staff to Assist You in Your Particu-  
lar Needs.

Serving Rochester's Better Builders with quality  
doors, windows, interior trim, wood specialties,  
and hardware.



2715 West Henrietta Rd. Greenfield 3311



SAW THE AD HERE  
Tell them you  
IT'S MORE IMPORTANT  
THAN YOU THINK

**The Town House**  
**The Lakewood**  
**The Woodcroft**  
**The Villager**

Open  
Daily  
from  
2-9  
P.M.

Your sparkling  
examples of our  
fresh point of view  
on better living for  
modest budgets crowding  
our parade of Lakewood homes  
to the gracious, new TOWN  
HOUSE, completely and tastefully fur-  
nished by Ebley's. Thousands have  
seen and admired this wonderful home  
and its neighboring models. You  
owe it to yourself to do the same!  
Our tract representatives are at your disposal daily.  
You'll be delighted at the ease with which  
one of these wonderful Lakewood homes  
can be yours! Why not visit us . . . and see for yourself!

OH LATA  
between  
Dewey &  
Lake

**FOR SALE**  
**THE CATHOLIC FAMILY  
CHOOSES A HOME**  
142 CATHOLIC PARISHES  
CATHOLIC HOME BUYING STARTS HERE  
A GUIDE TO CATHOLIC HOME BUYERS

**"HOMAR" TRACT  
FEATURED IN  
HOME SHOW**

Joe Entress, one of Roches-  
ter's most enterprising builders  
and developers, will spotlight  
his newest residential tract,  
"Homar," in the Spring Home  
Festival at the War Memorial  
this week. It has been an-  
nounced.

Ideally located in Our Mother  
of Sorrows parish, the  
homes in this tract have been  
designed particularly for the  
growing family inasmuch as  
the basic cost has been held to  
a minimum, with expandable  
facilities in later years made  
economical without a change in  
exterior construction.

Offered to area homeseekers  
with the catchy phrase that "A  
Homar home will give you that  
bright 'Home Sweet Home' of  
tomorrow . . . TODAY," the  
variety of homes already built  
and open for inspection indi-  
cates the sound understanding  
and practical know-how of the  
builder, John Highland Jr.,  
A.I.A., an authority on modern  
planning has been retained by  
Mr. Entress for the architectu-  
ral designs represented in  
seven floor plans and over  
twenty elevations to meet in-  
dividual desires in "Homar."

**Home Festival**

(Continued from Page 7-A)  
fine china made by the Cast-  
le-China Company for which  
the Sheer Company is the  
local outlet.

Among the booths featuring  
latest residential building  
tracts in the Rochester area  
will be found displays of table  
place settings, furniture ar-  
rangement for all rooms, ap-  
pliances and equipment—every-  
thing that can make your pres-  
ent or prospective home more  
convenient and enjoyable—all  
gathered under one roof at the  
War Memorial.

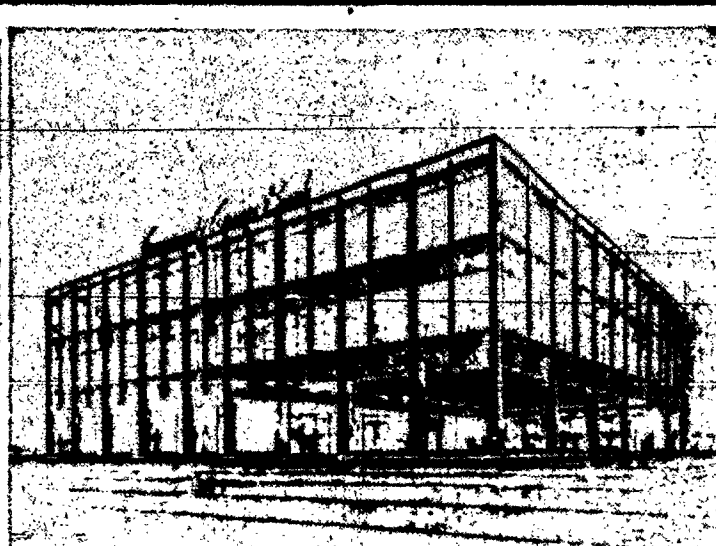
According to the sponsors of  
the Spring Home Festival, an  
extra added attraction has  
been added beginning with the  
opening day.

The fabulous \$300,000 world  
famous Potvin Exhibit of Ani-  
mated Wood Carvings has  
been procured.

Representing a lifetime of  
hand carving, this exhibit will  
contain twelve of the most  
unusual of these carved scenes,  
depicting: The Village Back-  
smith, The Family Kitchen,  
The Violin Maker, The Face  
on the Bar Room Floor, The  
Cattle Stampede and many  
others.

All in all, the 1956 Spring  
Home Festival has been de-  
signed to be informative and  
educational as well as highly  
entertaining for every member  
of the family. Previous attend-  
ance records are expected to  
be topped by several thousand  
in the first showing at the  
War Memorial.

**SALESMAN WANTED!**  
If you are clean cut, well appearing  
and have contacts here 2000, we  
have an opening for you in our  
modern, new, downtown organization,  
500  
**ANDY CHINNELLY, Realtor**  
**TRADING POST**  
2-41  
HUBBARD  
2230



OPEN LOOK to highlight downtown scene is planned in this  
drawing of the proposed new building for Community Savings  
Bank of Rochester at Main St. East and Clinton, Rochester.  
(Daily Record photo)

**Community Savings Bank  
To Erect Modern Building**

Community Savings Bank of Rochester will erect a  
completely modern new building to replace the present build-  
ing at the corner of Main and Clinton according to Charles  
W. Carson, president of the bank.

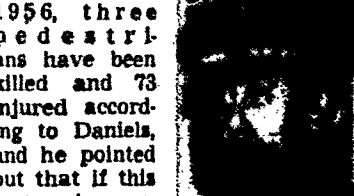
First bank building of its type stores on Main Street east of the  
to be erected in the city, the bank area and the entire third  
three story structure of stainless steel, porcelain enamel and plate  
glass is designed with the clean  
lines and sweep of modern archi-  
tecture. The plans combine the  
latest techniques of construction,  
lighting, and equipment for the  
service, comfort, and convenience  
of Community Customers.

ON THE MAIN floor all sav-  
ings department services will  
be immediately visible and acces-  
sible with teller facilities and  
spacious customer desks and  
lounge. Two automatic elevators  
will give access to mortgage, ac-  
counting and executive manage-  
ment offices on the second floor  
and to the Safe Deposit Depart-  
ment in the basement. The build-  
ing will be completely air-con-  
ditioned with air change six or  
seven times an hour.

The proposed structure will  
extend 133 feet on Main St. E.  
and 91 feet on Clinton Ave. S.  
with entrances on both streets.  
The area includes the present  
bank space plus the Main Street  
site now occupied by Maxwell's  
Donut Shop, Attie's and Schell's  
Bakery, property presently con-  
trolled by the bank.  
Community Savings Bank will  
occupy the ground floor, base-  
ment, and second floor of the  
new building. There will be 5300  
square feet rental space for  
Museum of Arts and Sciences  
A tour in color film of New  
York State and the history of  
the auto and automotive industry  
are featured in the Sunday after-  
noon motion picture program to  
be presented at Rochester Mu-  
seum of Arts and Sciences on  
March 11, at 2:30 and 8:30 p.m.

**Warning Given  
To Drivers,  
Pedestrians**

A warning to pedestrians was  
voiced this week by Inspector Al-  
bert O. Daniels of the Rochester  
Police Bureau. During the first  
two months of  
1956, three  
pedestrians  
have been  
killed and 73  
injured accord-  
ing to Daniels,  
and he pointed  
out that if this  
rate is contin-  
ued Rochester  
will pro-  
duce one of its  
worst records  
in years.



Inspector  
Daniels

"Drivers and pedestrians are  
equally responsible for the traf-  
fic safety problem," Daniels said.  
"If this great slaughter on our  
city streets is to be stopped, driv-  
ers and pedestrians must believe  
the cold hard facts presented by  
the police. If you will believe  
them and drive and walk accord-  
ingly, surely we will be on  
our way to a much safer city  
of Rochester."

A few reminders to pedestri-  
ans were mentioned by Inspector  
Daniels:  
1—Be alert, when you cross a  
street anywhere, and be sure  
that it is safe to do so.  
2—Obey traffic signals, crossing  
only on the green signal or  
only on the walk signal if  
there is one.  
3—Cross streets only at street  
intersections.  
4—Cross in the crosswalks at the  
intersections.  
5—At night, when walking, wear  
or carry something white or  
light colored, so that you can  
be seen by the drivers of mo-  
tor vehicles.

**Attend Daily Mass**

For Prompt Personal Action  
in Solving Your Needs  
LIST IT WITH!  
**MORGAN HOUSEL**  
REALTOR  
2110 Monroe Ave. GR. 1328

Estb. 1907  
SALES APPRAISALS  
Tax Deposits a Specialty  
**HALL REALTY CO.**  
LO 3230 239 POWERS BLDG.

W. A. FELDMAN Realtor  
1451 LAKE AVE. GL 3561  
Specializing  
SACRED HEART ST. JOHN'S  
ST. CHARLES PARISHES  
Phone of All Listings - Res. GL. 2444

1800 Homes, Farms and Businesses  
For Sale Through  
**BEDNARZ REALTY**  
Realtor  
OPEN EVENINGS AND SUNDAYS  
553 Hudson Avenue Res: 984 Ave. D  
Bkgr 8441 COngress 2790

**DOUBLES NEEDED**

Holy Apostles  
Holy Family  
Parishes  
PROMPT, COURTEOUS SERVICE

**CHRISTIE'S  
REALTY SERVICE**  
500 LYELL AVE. GL 8980

**INCREDIBLE  
VALUES!**

SWEEEPING SPACIOUSNESS, FINE  
DESIGN & EXCEPTIONAL DETAIL MAKE

**DEWEY MANOR HOMES**

The Most Exciting Buy In Years

All Homes In This Fine Residential Community  
Are Designed To Remain Exclusive, Each Home  
Is Different From Your Neighbors.

INVEST IN A LIFETIME OF  
HAPPINESS—CHOOSE

**DEWEY MANOR**  
Off. 4559 Dewey Ave.—North of Latta Rd.  
IF YOU ARE CONSIDERING  
BUILDING THIS SPRING—  
ACT NOW!

- ★ NEW HOMES OPEN  
Others Under Construction
- ★ CHOICE LOTS
- ★ FURNISHED MODEL  
HOME ON TRACT

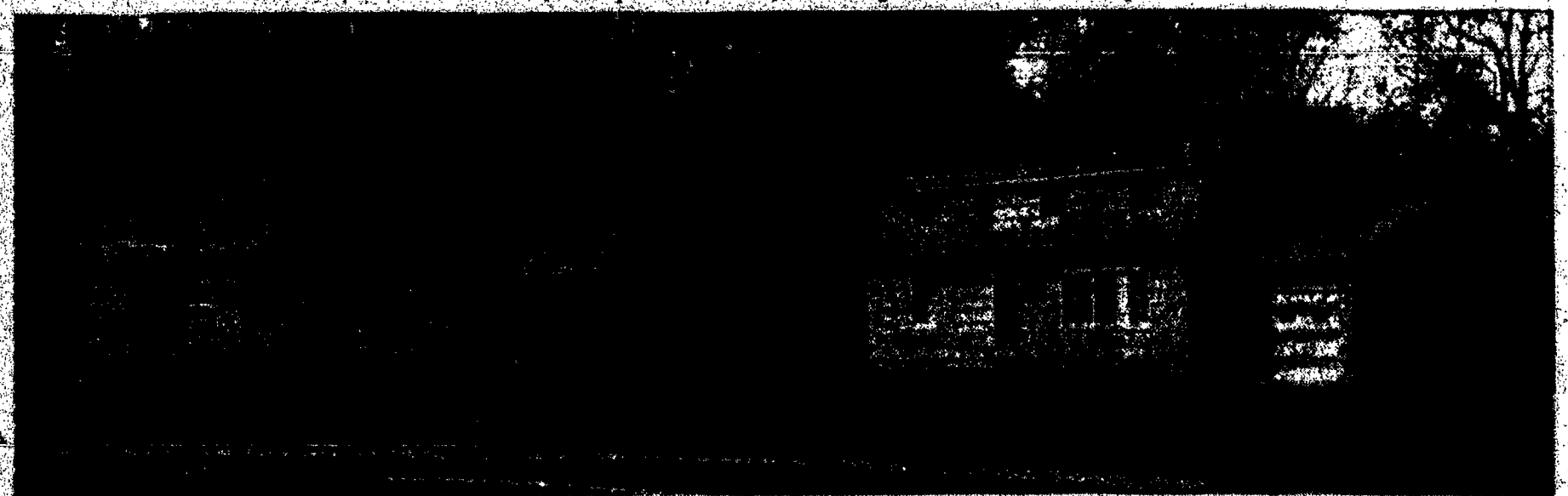
A Sub-Division That You Will Be Proud To Live In, Near Our Mother of Sorrows!

**LaDUE & FITCH, Inc.**

CHar. 4304  
HUBbard. 1361

**ALL THE ROOM YOU NEED FOR YOUR GROWING FAMILY**

Up to 1600 Sq. Ft. Living Space  
(Prices quoted allow subject to change without notice)



2 Bedrooms with Garage  
And Full Basement  
**\$16,300**

EXPANSO RANCHO HOMES  
**PEPPERIDGE HOMES, Inc.**  
Over Ridge Road West, First Street West of Long Pond Road  
Downtown Office BA 7447

4 Bedrooms—2 Bathrooms  
Garage—Full Basement  
**\$18,900**