

### CHRIST IN CHRISTMAS **The Sound Of Hammers Again Brings Joy**

By MARY E. FITZGERALD  
Executive Director, Catholic Family Service

At the men, women and of course the children, trudging along the narrow streets of Nazareth during the early years of the life of the Man who is God, how joyfully they must have listened to the sound of hammers from the Humble Home of Joseph the Carpenter.

During the days before those first Birthdays of the Christ Child would they not have heard that happy sound far into the hours of the night as His Foster Father fashioned simple toys for the Boy Jesus, birthday gifts of love made of beautifully polished wood from a tree growing near, perhaps to one, which would later be selected for the death bed of the God-Man.

And now, down through the centuries, we listen and rejoice as the hammers and saws resound through the Public Places in our Elmira. Preparations for the 1955 Birthday of the Christ Child are well under way and far exceed the fondest expectations of the small group of pioneers who a few years ago, decided to "Put Christ Back into Christmas."

THROUGH THE cooperation of the Association of Commerce, the generosity of Colonel Weaver of Elmira Reformatory and the tireless labor of many volunteers, headed again by Mr. Clement Knuth the Star will again rest over Elmira.

Within the next two weeks, the life size figures of a Nativity Scene will be placed in an appropriate manger in Winger Park by the Association of Commerce. For the third year, the strains of Christmas Carols will attract passersby and cause them to pause reverently before the lovely Crib in the windows of Le Valley, McLeod, Inc. To the latter goes the special thanks of the entire membership of the Christmas Committee—as the first and only business establishment to

"Put Christ Back into Christmas." Let us go farther into the market places and find other Creches, purchased by and erected through the Ladies of Charity. You will find these vivid reminders of the real meaning of Christmas, in front of the Southside High School, in the Court Yard, on the lawn near the Dominican Monastery and new this year will be the Crib on the point at Elmira College.

DURING THE next week, the Executive Committee will meet with the Rev. Nicholas Alletto, Moderator and General Chairman, to complete plans to "Put Christ Back into Christmas."

Special attention is directed to the sale of Advent Wreath sponsored by the Infant of Prague Committee of the Ladies of Charity. This beautiful custom is a most fitting prelude for the glorious, symphony of a perfect Christmas. Wreaths, by the way, may be purchased from Buell's complete with candles for the small sum of a dollar and a half. We suggest you place your order immediately.

The song of the Angels echoes in our hearts today as we humbly and gratefully approach the Holy Season of Advent, thankful that there will be "Room in the Inn" for the Holy Family this Christmas. Since the time of St. Francis, who built the first Christmas Crib in 1213 in Italy, the Creche in its present form has been a familiar sight in Christian homes all over the world. The Crib was brought to America by many nationalities and is now coming into its own again, victorious over the tinsel, reindeers and other symbols of our modern commercialized world and its "Xmas."

ELMIRA BIDS fair to become a new Bethlehem. What blessings may we not expect from the Infant Jesus in loving appreciation of a Christmas which will indeed be His Birthday?

### Ground Turned For Ithaca Parish School Annex



MONSIGNOR WILLIAM BYRNE, pastor of the Church of the Immaculate Conception, breaks ground Tuesday afternoon, Nov. 7, for the addition of the Parochial School, adjoining the school on N. Plain St. Standing beside him is William M. Egan, chairman of the recent successful drive for funds for this addition. At left is the Rev. Otto J. Vogt and the Rev. William N. Thomas. Also Sister Gertrude Marie, superior, Mission Helpers of the Sacred Heart, children of the school and workers in the drive are present.

### Work Begins On Addition To Immaculate School

Ithaca — Ground for an addition to the Parish School of Church of the Immaculate Conception was broken here on Nov. 7. The Rt. Rev. Msgr. William Byrne, pastor, turned the first spadeful. Construction is underway.

The new part of the school, where 500 boys and girls are now studying in kindergarten through eighth grade, will be attached to the front of the building and extend toward N. Plain St. It will provide four classrooms, an audio-visual room, and a music room.

THE ADDITION, due to be finished in five or six months, was designed by Edward M. Lorschelder, Rochester architect, to match the present brick building which was erected eight years ago. Ward Construction Company is the general contractor.

MONSIGNOR BYRNE said that nearly \$240,000 has been pledged to the building and improvement fund by parishioners and non-Catholic friends. The original quota of \$225,000 was

### Bids For Building New Lourdes School Opened

Four general construction bids for Our Lady of Lourdes School, Elmira were opened earlier this week in the offices of Haskell, Considine & Haskell, Elmira architects.

Bids were also opened for the heating, plumbing and electrical work to be done at the school. Rev. Leo G. Schwab, pastor, said that the figures submitted by the contractors will be taken under advisement by the Diocesan Building Committee at Rochester.

Following approval by the Diocesan officials, contracts for the work will be awarded.

BIDS FOR general construction were received from McLane Construction Co., S. A. Laughton Inc., Streeter Associates Inc., Welliver Construction Co. Heating and plumbing bids were submitted by American Warming and Ventilating Co., C. R. Evans Corp. and the Hogg-Nichols Corp. Bids for the electrical work were received from G. H. & J. T. Kelly, Robert J. Miller, Terwilliger Electric Inc. and Sterna Electric.

### Expanding Parish Census Cites Need For New Church

A study with the view of constructing a new church to accommodate the needs of the rapidly expanding parish population in Horseheads is being made according to the Rev. Francis J. Reilly, pastor.

Father Reilly conferred on the proposed program at the Chancery in Rochester, last week. In discussing future plans for the building program, Father Reilly told members of the Holy Name Society that construction of a parochial school in Horseheads will have to be indefinitely delayed because of the shortage of nuns to staff a school.

St. Mary parish has more than doubled in population in the last ten years and while the present church is adequate at this time, the future needs of the parish must be taken into consideration.

In 1935 only one Sunday Mass was celebrated in St. Mary's. Prior to that time, the pastor of the church also said one Mass on Sundays and Holydays at St. Charles Borromeo church in Elmira Heights, which was a Mission church of St. Mary's.

When St. Charles was made a separate parish in 1935, two Masses were said on Sunday at St. Mary and in 1953 a third Mass was added. Last year a fourth Mass was added and a fifth was scheduled a few months ago. Father Reilly is now considering the possibility of adding the sixth Mass to accommodate the more than 1200 who attend the Sunday Masses.

THE PROPOSED church would be comparable in size to Our Lady of Lourdes church in Elmira and would have an auditorium.

It has not been decided whether the present church will be razed and the area used for parking space or there is a possibility that the building would be used for religious instruction to children of the parish.

A general meeting of the parishioners will be called in the future.

### Ladies Of Charity Memorial Slated

Annual Memorial Mass for deceased members of the Ladies of Charity will be said in St. Peter and Paul Church, Elmira, on Saturday, Nov. 19 at 8 a.m.

Members who died during the past year were: Mrs. Helen O'Neill, Mrs. Mary Danaher, Mrs. W. B. Leahy. Members, relatives and friends are invited to the Mass.

### Fourth Degree Mass Planned

Members of Elmira Assembly, Fourth Degree Knights of Columbus will attend a Memorial Mass for their deceased on Sunday, Nov. 27 at 8:30 a.m. in Our Lady of Lourdes Church, Elmira.

Following reception of Holy Communion by the group at this Mass a Communion breakfast will be held in the parish hall. Rev. Leo G. Schwab, pastor, will be the breakfast speaker. Thomas R. Clark is general chairman and will be assisted by Joseph H. Fitzpatrick, Charles O'Hara and Frank Clario. An honor guard from the assembly will participate.

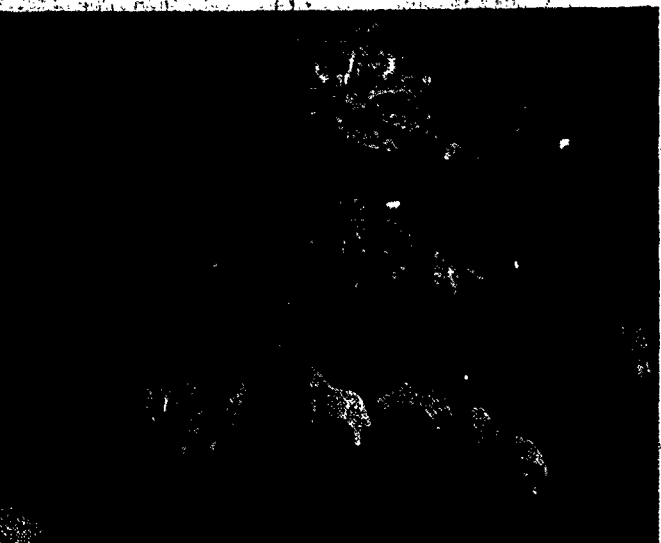
The Hardest Fall  
The hardest fall a man can take is to fall over his own bluff. —Anonymous.

SELECT A **DISTINCTIVE GIFT** FROM OUR COMPLETE LINE OF FAMOUS

**HUMMEL** Figurines  
Beautifully Colored  
Various Sizes

SEE THEM NOW!

**Christmas Nativity Sets**



Here is one of the most delightful and colorful Nativity Sets we have ever carried. The story of the First Christmas is depicted in sturdy, long-lasting plaster of Paris. Beautifully colored, it will make a handsome and inspiring decoration at Christmastime...

20 COMPLETE PIECES  
\$6.00 to \$15.00

**CHRISTMAS CARDS**

CRESTWICK OR HUMMEL

Personalized If You Wish

**RELIGIOUS CARDS**

**Gifts of Lasting Values**

- BIBLES — ROSARIES
- STATUES — MISSALS
- PICTURES — CRUCIFIXES
- MEDALS AND CHAINS
- SISTER DOLLS

DEDICATE YOUR HOME AT CHRISTMAS WITH AN INFANT OF PRAGUE STATUE

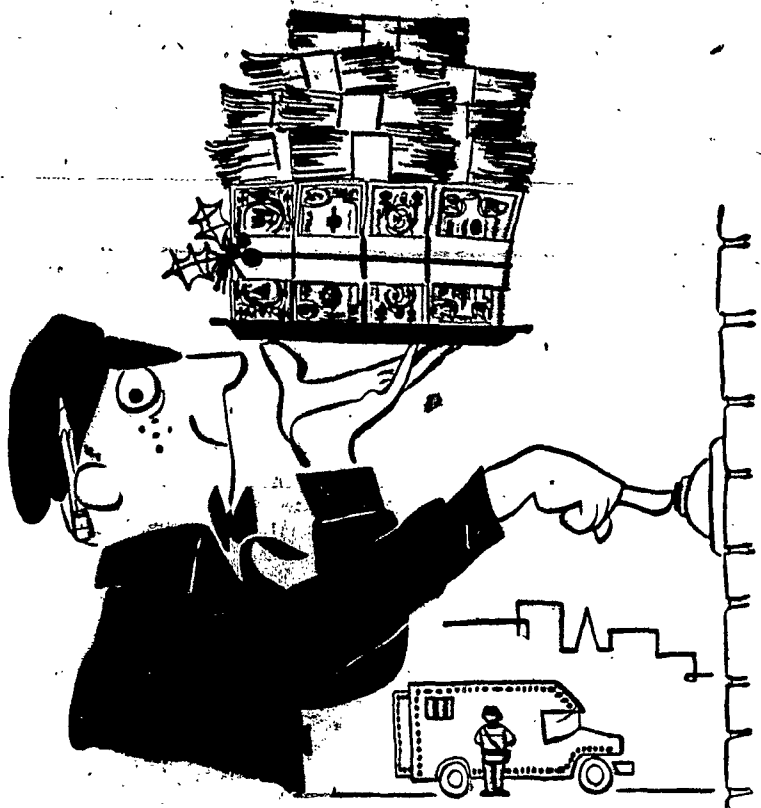
**RELIGIOUS ART SHOP**

Mary Louise McManus

Phone 27109 808 GROVE ST. Elmira, N. Y.

OPEN DAILY 9 A.M. TO 9 P.M.

**YOU ORDERED \$1,369,921**  
worth of Merry Christmas—



**Christmas Club members:  
WE DELIVERED THIS WEEK**

It's easy to have a prepaid Christmas — all fun and no worry—if you deposit weekly.

SAVE (Weekly)	HAVE (Next Christmas)
.25	\$ 12.50
.50	25.00
1.00	50.00
2.00	100.00
3.00	150.00
5.00	250.00
10.00	500.00
20.00	1,000.00

**NEW CLUB OPENS MONDAY, NOV. 21**

Join at one of these offices

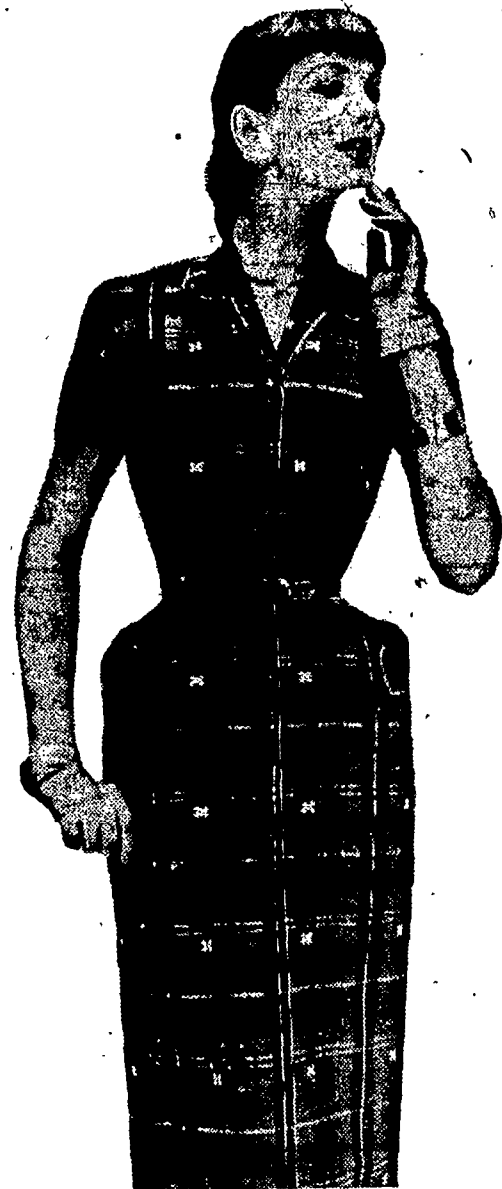
- Main Elmira Office ..... 150 Lake Street
- Merchants Office ..... 109 West Water Street
- Southside Office ..... 418 South Main Street
- Elmira Heights ..... Horseheads ..... Watkins Glen
- 156 East 14th Street ..... Hanover Square ..... 221 N. Franklin Street

**MARINE MIDLAND TRUST COMPANY**  
of Southern New York

Member Federal Deposit Insurance Corporation

We Give S & H Green Stamps

the new **Sheehan's**  
207 STATE ST.  
ELMIRA, N. Y.



famous-name  
daytime classics

- Exquisitely tailored
- Wash beautifully
- Just one of many styles
- Tubfast colors
- Sizes for misses and women

**\$5.95**

SHEEHAN'S DRESSES — Second Floor

### Christmas Fete Planned By KC Auxiliary

Corning — Plans for two socials were completed a week ago at a meeting of the Ladies of Columbus in the Knights of Columbus Home, with some 20 members in attendance including the cochairmen, Mrs. Joseph Ambrosone and Mrs. Ferdinand Bobrick.

The first event was a public card party held this Tuesday evening at the KC Home with Mrs. George Schaller and Mrs. Asher Cutler serving as cochairmen. Prizes were awarded and refreshments served.

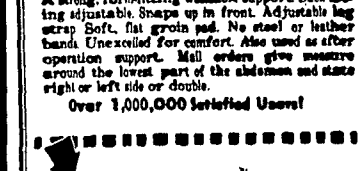
The second event will be a Christmas party to be held at the KC Home Dec. 5 when each member will bring a wrapped gift for the needy.

### Forty Hours

Sunday, Nov. 20—Our Lady of Victory, Rochester; East Rochester; Honeoye Falls; Mercy Hospital, Auburn and St. Joseph's Hospital, Elmira.

### RUPTURE-EASER

MAKING COMFORT WITH Patented RUPTURE-EASER (U.S. Pat. 2,740,000, U.S. Pat. 2,740,001) For MEN, WOMEN and CHILDREN



Right or Left Side \$3.95  
Double \$4.95

A strong, form-fitting, washable support. Best fitting adjustable. Shaves up to 1/2 inch. Adjustable leg straps. Soft, fit groin pad. No steel or leather bands. Unexcelled for comfort. Also used as after operation support. Men, women, give measure around the lowest part of the abdomen and state right or left side or double.

Over 1,000,000 Satisfied Users!

ELASTIC stockings, belts and trusses fitted by trained personnel.

Francis T. Steed

**Gerould's** DIAL 6946 INC. PHARMACY

So. Main and Hudson Streets  
ELMIRA, N. Y.