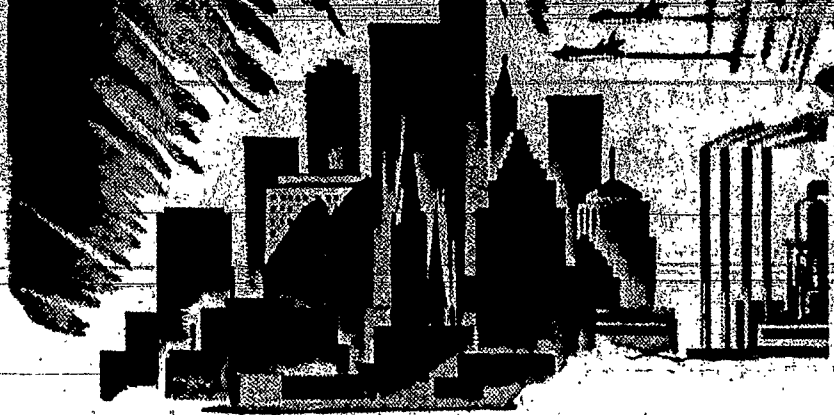


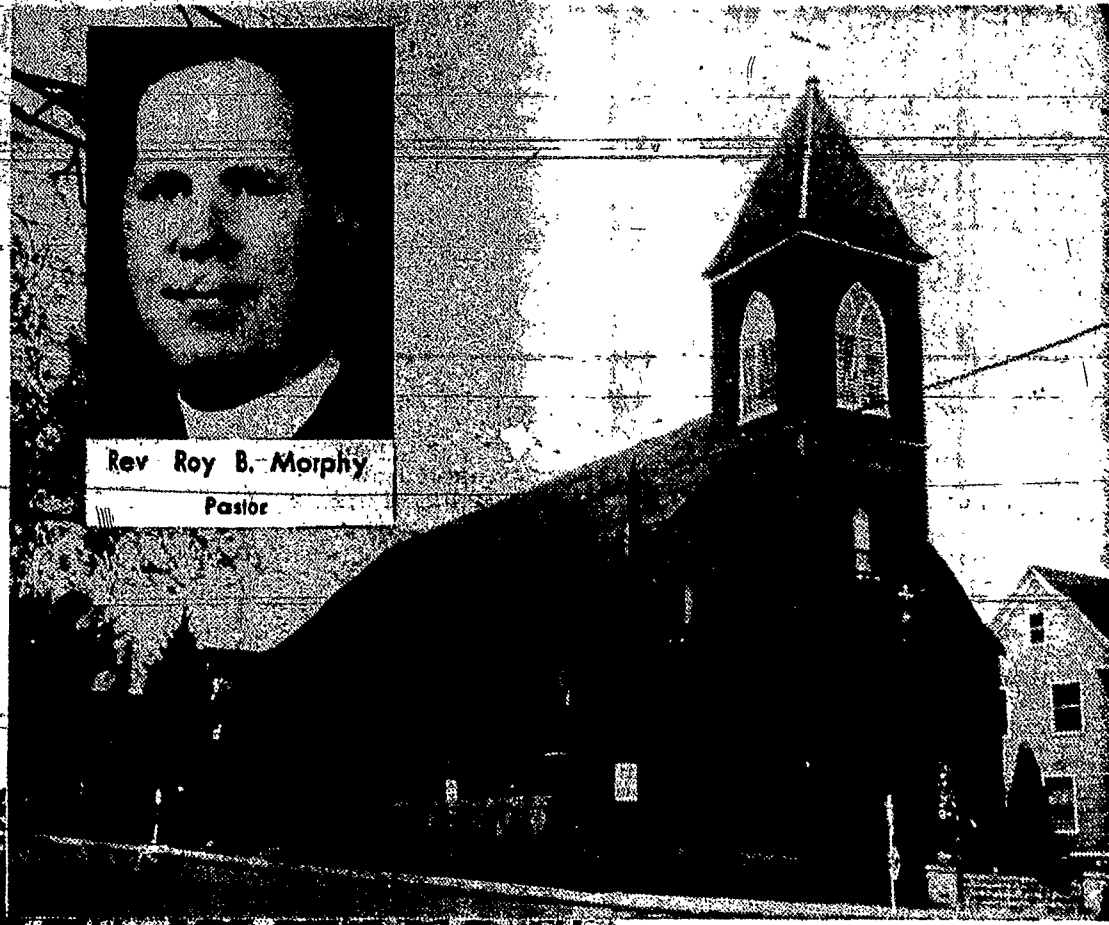
PROGRESS



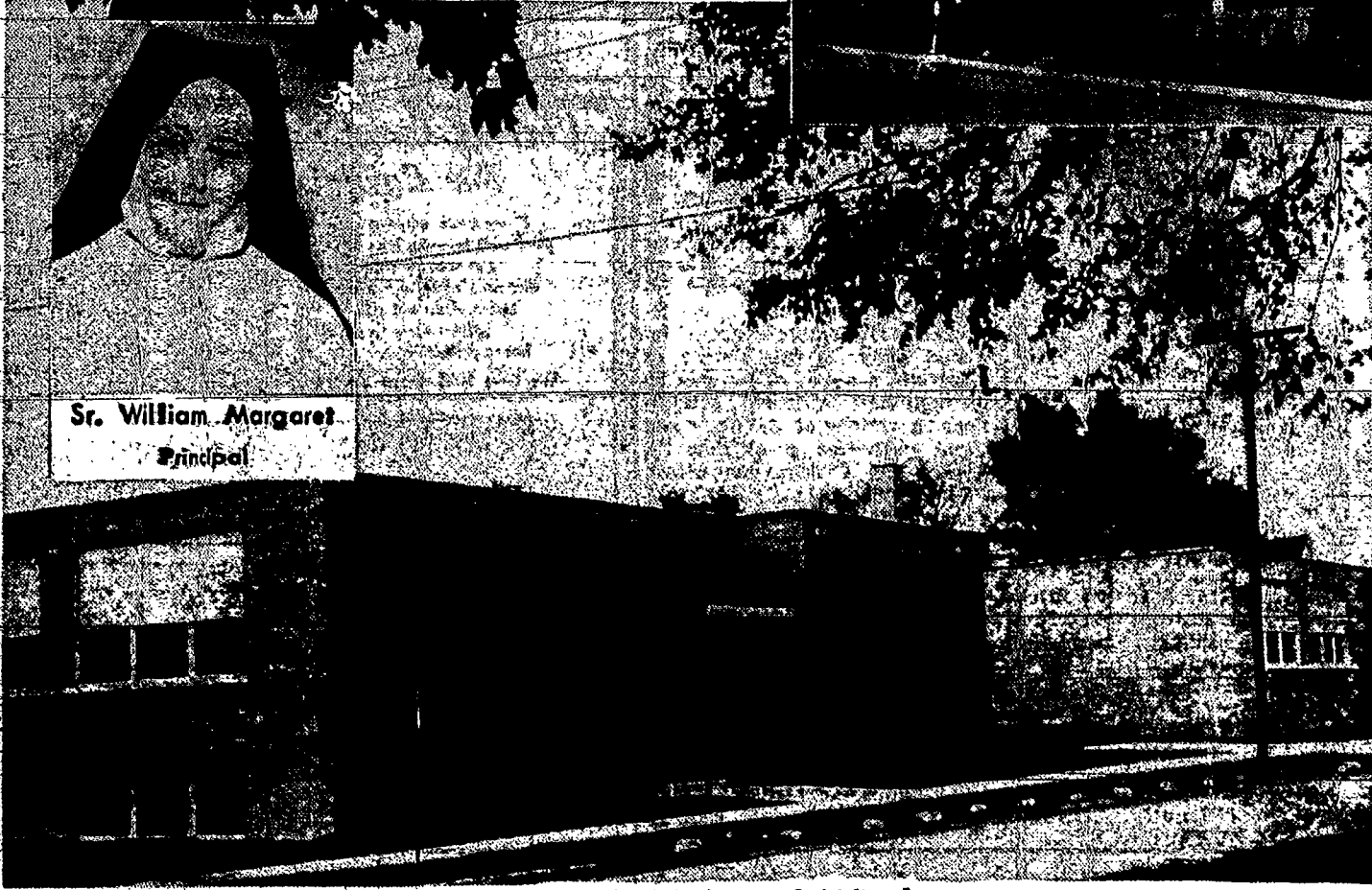
The parish of St. Jerome, East Rochester, (then the Town of Despatch), was established in September 1905 under the direction of the Most Reverend Bernard McQuaid D.D., first Bishop of Rochester. The Reverend J. Gaffel was appointed pastor. St. Jerome's Church was dedicated on December 30, 1905, by the Most Reverend Bishop. Late in 1907 the church was completely equipped and the adjoining rectory finished. Church and rectory were enlarged in 1927. The Catholic Youth Association recreation center, available to all the youth of East Rochester was built under Father Gaffel's administration and dedicated on October 26, 1948. The school was started on February 9, 1950. The parochial school was first started in the CVA building in September 1952 under the tutelage of the Sisters of St. Joseph and under the direction of St. Jerome's present pastor, the Reverend Roy B. Morphy. Ground breaking for the new school took place on June 29, 1954.



Rev Roy B. Morphy
Pastor



SAINT JEROME'S CHURCH EAST ROCHESTER



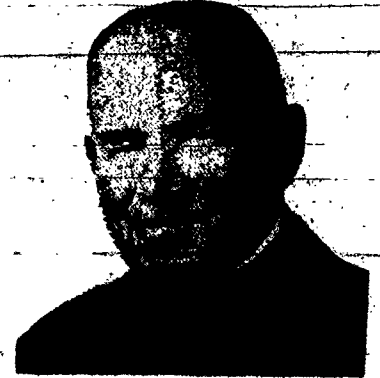
Sr. William Margaret
Principal

Martin McGraw & Wiard
Architects

Golden Jubilee 1905 - 1955 Sunday October 30th

HIGH MASS
11:00 A.M.

BISHOP JAMES E. KEARNEY
PRESIDING



NEW ST. JEROME'S SCHOOL DEDICATION 3 P.M.

The new St. Jerome's School, built at a cost of \$270,000.00 is bordered by West Avenue, South Garfield Street and East Filbert Street in East Rochester, just a few short blocks from St. Jerome's Church. Containing eight grades and a kindergarten, all staffed by the Sisters of St. Joseph, the one-story building also houses a large auditorium, library and a cafeteria-type lunch room. The structure is connected to

the East Rochester Youth Center Building recently built on the same parish property and operated by St. Jerome's. With the completion of the school, fully rounded facilities for educational, religious, and athletic instruction have been provided. The Youth Center will, of course, continue to be operated for the youth of East Rochester irrespective of race, creed or color.

THIS PAGE HAS BEEN SPONSORED BY THE FOLLOWING FIRMS IN THE INTERESTS OF THE NEW SCHOOL

A. BURGART, INC.
HEATING
2705 W. Henrietta Rd. Rochester 20, New York Greenfield 1190

HELENDALE CONSTRUCTION CO. INC.
GENERAL CONTRACTORS
145 Druid Hill Park Rochester, N. Y.

We are proud to have had Domine Concrete Blocks chosen to be used in the new St. Jerome School
DOMINE BUILDERS SUPPLY CORP.
Serving the building industry since 1910
155 Gould St. RR 6330

Plumbing Installation by
E. G. SNYDER CO., INC.
86 Scio Street Rochester 4, New York Hamilton 1220

F. L. HEUGHES & CO., INC.
Structural Steel Fabrication and Erection
1029 Lyell Ave. Rochester 6, N. Y.

WECKESSER BRICK CO.
BAKER 8045
723 Clarissa St. Rochester 8, N. Y.

DRISCOLL ELECTRIC CORP.
Electrical Work
124 Millbank St. Rochester, N. Y.

SCHAEFER BROS.
Mason Supplies
1025 Chili Avenue Genesee 3460

Woodwork for St. Jerome's School
Manufactured by
WOOD SPECIALTIES CO., INC.
124 Railroad St. Rochester 9, New York

Painting and Decorating by
A. R. PIERPONT CO., INC.
144 Jersey Street Culver 1122

GOODSTONE MFG., CO.
470 HoMenbeck St. Rochester 21, New York Congress 5335

TRANT'S, INC.
Rochester's Largest Religious Goods Store
96 Clinton Ave. North Baker 5623
115 Franklin Street

MAURER CO., INC.
Rochester 7, New York Hamilton 0030
31 Richmond St.

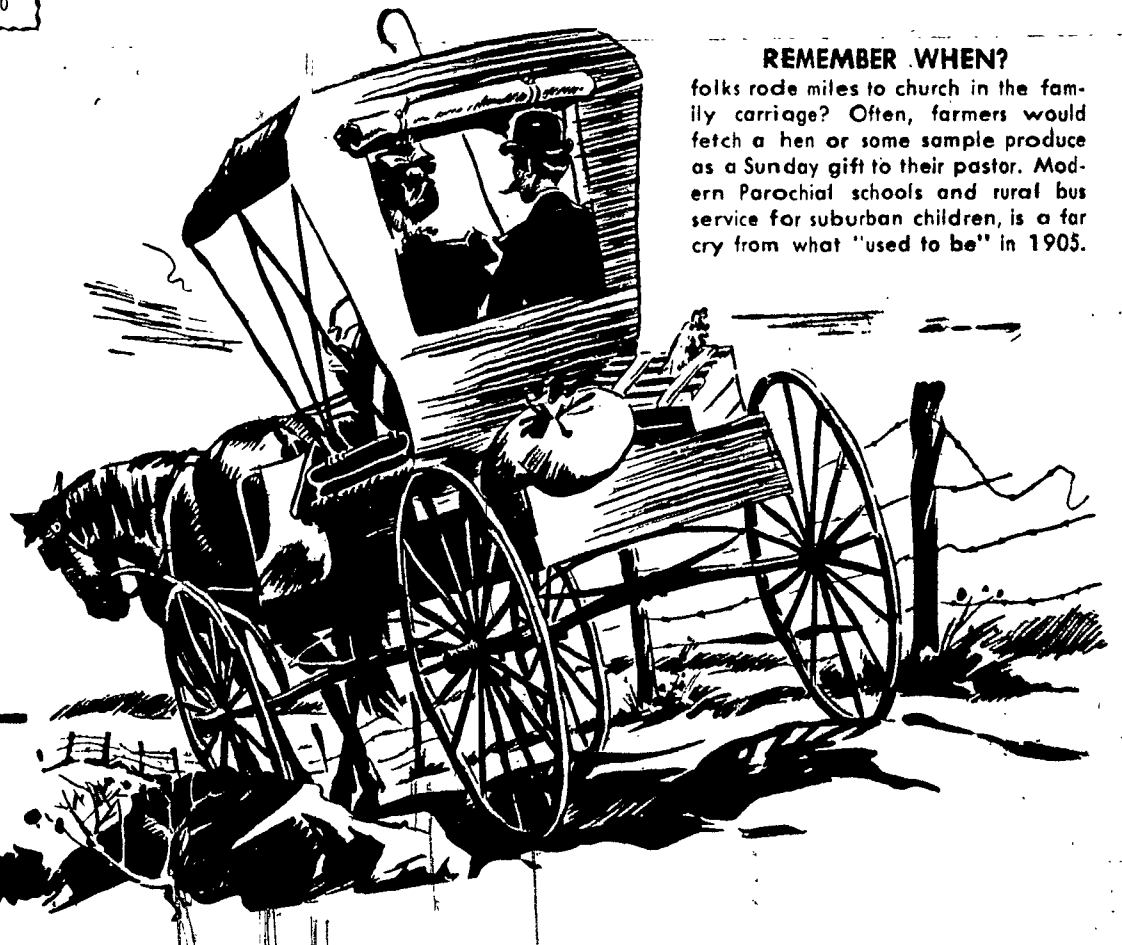
ALFIERI'S FOOD MARKET
230 W. Commercial Street East Rochester, N. Y.
Phone E. Rochester 120

HILLSIDE SERVICE
Corner of Lincoln Road & Fairport Road East Rochester, N. Y. Phone E. Rochester 268

MERCHANTS SERVICE
Complete Service
900 S. Washington Street East Rochester, New York
Telephone E. Rochester 557-W

RITWAY MARKET
Meats - Groceries - Beverages
119 West Commercial St. East Rochester, N. Y.
Phone E. Rochester 429

REMEMBER WHEN?
folks rode miles to church in the family carriage? Often, farmers would fetch a hen or some sample produce as a Sunday gift to their pastor. Modern Parochial schools and rural bus service for suburban children, is a far cry from what "used to be" in 1905.



50TH ANNIVERSARY 1905 - 1955