

Notre Dame Convent Houses Teaching Staff

Former McCann Residence On Lower Maple Avenue Expanded
And Remodeled As Convent For 13 Sisters At High School

THE SISTERS OF MERCY serving on Elmira's new Notre Dame High School faculty have taken up residence in the former McCann residence at 1400 Maple Avenue. Originally an eight-room structure, the home has been enlarged and remodeled to accommodate the Sisters of Mercy teaching at the school.

Notre Dame Convent, as the home is now officially called, boasts 20 rooms, including the original and new sections of the house. At present there are 13 Sisters in residence, but facilities have been provided for additional Sisters, as the growing school registration will demand.

The older part of the convent includes the community room, parlor and guest dining room. Windows have figured drapes in contrast with the color scheme of the rooms.

The Sisters' refectory adjoining the community room is furnished with formica-topped tables and chairs of light oak. Yellow-figured drapes make for light and color as well as serviceability.

The kitchen, done in rose and green, has the latest modern appliances in the form of a deep freeze, dishwasher, electric stove and refrigerator with two sinks for convenience and time saving.

In the original building are four upstairs sleeping rooms, each completely furnished, with ample clothes presses and hot and cold running water.

EXTENDING FARTHER back toward the school, the "new half" of the convent blends so well with the older section that it is difficult to ascertain the dividing line. On the first floor a short hallway connects the kitchen with the rear door leading into the yard. One sleeping room, utility rooms, cloak room and bath room with shower are situated to the rear of the main building.

To the left is the beautiful appointed chapel, done in mauve with white woodwork. Altar and pews are of light oak similar to those in the school chapel. Figured drapes woven with gold thread grace the windows.

More sleeping rooms, furnished like the others are on the second floor. The basement includes three large rooms, one for storage, one for fruit cellar and the laundry room. Behind the convent is a 3-car garage.

The Sisters moved into the Notre Dame Convent on August 20 and in the incredible space of three days had the convent so well scrubbed, polished and settled that it seemed as though they had always lived there.

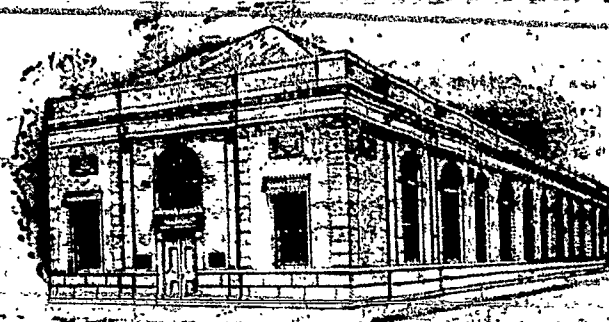


Notre Dame Convent—Residence For High School Sisters

Welcome, NOTRE DAME HIGH SCHOOL

We are happy to welcome both staff and students of the beautiful new Catholic High School. Many, many graduates of high school and college have grown up and made their contribution to the life of Elmira and elsewhere since this bank was

established in 1853. We look forward to the contribution the young people just entering school will make to the future. As a service organization with fourteen thriving banking offices, 10 men with trained personnel, requiring young people of the highest integrity, intelligence and personality, we look to future graduates for those who will carry on the high standards of service this bank has always maintained.



MAIN-ELMIRA OFFICE
150 Lake Street Elmira, N. Y.

14 Conveniently Located Offices
ELMIRA ELMIRA HEIGHTS HORSEHEADS WATKINS GLEN
BINGHAMTON JOHNSON CITY ENDICOTT
CORTLAND

Member
Federal Deposit
Insurance Corp.

MARINE MIDLAND TRUST COMPANY
of Southern New York

Over
\$120,000,000

CREDITS

The cartoons appearing in some advertisements of congratulations to the Sisters of Mercy are original ideas of Frank J. Giblin of the Courier-Journal Display Advertising Staff. They were prepared by the artists of the CAREY STUDIO, Rochester, as a public service to add interest to the Sisters' Dedication Day for Notre Dame High School, Elmira.