

# Three Main Units Featured In New Mount Carmel High

The new Mount Carmel High School in Auburn is located on a beautiful, gently rolling school site of approximately 59 acres lying between Lake Avenue and South Street in the southern portion of the city.

This site originally consisted of approximately 90 acres purchased from Mr. H. G. Metcalf of Auburn in the fall of 1952. Upon careful study by the architects of site possibilities, it was noted that approximately two miles of storm and sanitary sewers had been installed in the property for future residential development during the 1930's. Additional studies noted that the rather limited frontage on South Street in Auburn, was directly opposite an existing public elementary school, and that locations of the school at this point might create certain traffic problems.

OF COURSE, it appeared that site of 90 acres was not required for a high school and would be a considerable area for maintenance and operation. After careful study it was found possible to develop a site program in this area which will eventually provide between 80 and 90 new residential building sites and several new city streets.

After development of the program and approval by city officials, the Carmelite Fathers dedicated the extension of Mattie Street as Kearney Street, several minor streets, including extension of Monroe Avenue, Yale Avenue, Harvard Avenue and Hobart Avenue and a right-of-way for a large new street which will eventually extend from Lake Avenue to South Street. Since the present considerable congestion of city traffic in this area of town, the new drive passes in front of the school and has been named Whitefriars Drive. The school has been located in the northeast corner of the remaining 59 acres to provide easy access from Kearney Street and Whitefriars Drive to Lake Avenue.

The beautiful site will contain very ample room for future tennis courts, baseball diamonds, football fields, and any other facilities in this area. The site development has not only provided important additional residential space for the City of Auburn, it has been a sound, economical procedure which has meant much to the development of the school.

THE BUILDING plan of the new Mount Carmel High is developed into three areas. The eastern section consists of the cafeteria and gymnasium-auditorium with provision for a future extension containing a permanent auditorium on the eastern portion of the building. This wing contains the most noisy and distracting elements of the building, and is remote from the classroom wing. The central wing contains common facilities such as chapel, homemaking suite, two large science rooms, library, offices and medical rooms, since these rooms will be common to students approaching the central wing from the classroom portion or the gymnasium-auditorium and cafeteria wing.

The classroom wing extends north and south in a "T" shape on the western end of the building. This classroom wing is designed so that future classroom wings may be extended to the west as the school grows. As is noted, the entire plan is most flexible and extensions could be made to this one-story building and in at least three directions.

The visitor approaches the school through a curved driveway from Whitefriars Drive and stops his car in a parking space in front of the main entrance lobby. He will note the flagpole in the center of the traffic circle in front of the building and may glance back at the building to note the prominent stainless steel cross located on the high point of the building at the peak of the gymnasium roof. This cross is fabricated of stainless steel finish, is approximately 13 feet and easily noticed by all visitors approaching or leaving the school.

A WIDE SIDEWALK leads to the main entrance which provides a low, wide overhang to shelter students and visitors from the elements before approaching the main doors. Upon entering through the battery of doors, one finds himself in the main entrance lobby approximately 22 feet wide by 70 feet long which will provide ample space for the central traffic going to the three wings and for large crowds which may congregate during and after athletic and auditorium events.

The visitor will immediately note the beautiful coat-of-arms of the Carmelite Fathers located directly at the intersection of the two corridors in the terrazzo floor. The visitor may turn east into a wide sky-lighted corridor leading to the cafeteria and to the other entrances to the gymnasium and to the parking lot. On the left the visitor may go through a short passage to the cafeteria which is a dramatic room approximately 100 feet long and 32 feet wide, which may be used for community activities, band prac-

tice and general cafeteria uses. It is anticipated that the cafeteria will seat well over 400 students as well as provide a large, general all-purpose room for many school activities.

Two small private dining rooms have been provided for the Friars and the Sisters, and directly off from the corridor will be found a dual-serving line which provides adequate provision for students or visitors to obtain fast service of either hot or cold lunches. Behind this area is a modern tiled kitchen containing complete facilities for serving any sized crowd which may be desired at the school.

KITCHEN EQUIPMENT includes a modern, pass-thru refrigerator between the kitchen and the salad serving areas, a complete battery of stoves, ventilation system, mixer, island and vegetable preparation areas, cooking tables, complete dishwashing arrangement and ample space for the storage of dishes and equipment. A walk-in cooler is provided for general kitchen storage, and a large general storage room is contained adjacent to the exterior entrance.

The kitchen and serving areas are well lighted from eight skylights in the ceiling which provide adequate natural light and retain all the possible wall space for a compact, efficient kitchen arrangement.

The visitor may then pass through the brick-faced corridor into the large gymnasium containing approximately 10,000 square feet of floor space. The gymnasium will have a battery of folding bleachers, extending completely across the north wall of the gym providing spectator space for 550 or more spectators. The gym is divided with a folding partition which intersects a wooden stage platform on the south end of the gymnasium.

The gymnasium floor will be adequately large enough to provide a college-sized basketball court and has been so designed that the stage might be removed at a later date when the auditorium might be built and an additional 50 feet gained in the gymnasium. The hardwood flooring on the gym floor extends underneath the stage so that this might be easily done at a later date.

Large locker rooms are located on each side of the auditorium, and the entrances are located remote from the public entrances so that the locker rooms may serve as dressing rooms for any theatrical activities which may take place on the stage. Access may be obtained directly from either side of the stage or from either locker room to the large playfields to the south and west of the school. The interior finish of the gymnasium is painted block in a soft green with a white ceiling and yellow steel trusses above.

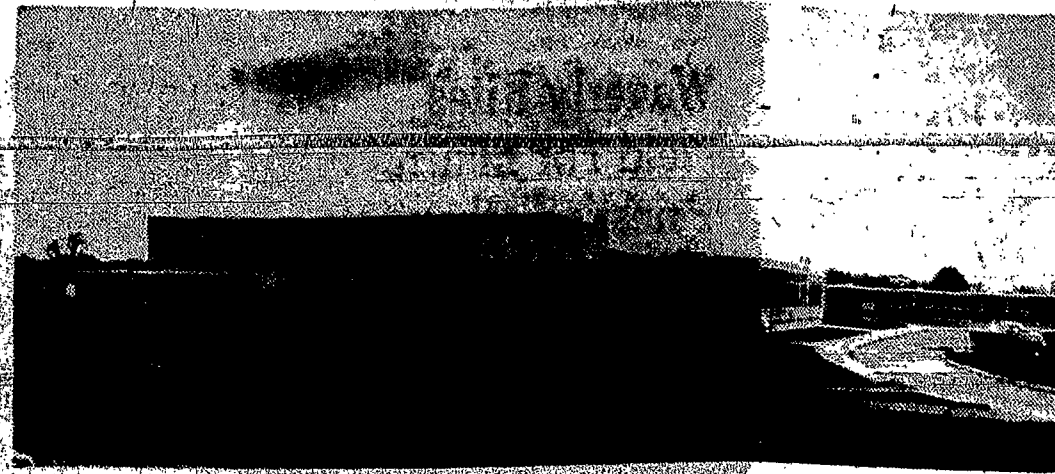
LEAVING THE gymnasium the visitor again passes through the brick and wood paneled main entrance lobby into the central wing. On the right through large class windows from the corridor the visitor will see the main general office with public and secretarial space, principal's office, dean's office, nurse's room, lavatories and radio control room. The open effect of the general office to the corridor assists the visitor in finding the office and provides additional control of the corridor space. This central wing, of course, may be divided by a concealed folding grille to separate the classroom portions of the building from the public areas during performances.

The visitor then proceeds down the skylighted corridor and notes a tastefully furnished, well-lighted library on the left, 60 feet long by 22 feet wide, containing modern, light, natural wood furniture and shelving.

This wing also contains a chapel, a large advanced science laboratory together with preparation room, dark room and all necessary science facilities. The homemaking suite in this wing also consists of a large general all-purpose room and special kitchen-laundry and utility rooms for a complete homemaking instructional course.

AS THE VISITOR passes through a small lobby connecting the central wing and the classroom wing, he notes that the classroom wings are oriented in a "T" shape to provide east and west orientation for the classroom lighting. The arrangement of this school will provide some separate instructional classes for girls and boys. It is expected that the girls will be located in the five home-rooms and large study hall of the southern portion of the classroom wing, and the boys will be located in matching facilities in the northern portion of the classroom wing. This wing also contains toilet facilities, boys and girls guidance rooms, a bookstore and storage room, and faculty rooms for the Friars and Nuns.

The building has been planned so that the east-west corridor may be extended directly through



MOUNT CARMEL HIGH—Photo shows view from east side of Auburn new Catholic high school for boys and girls. The gymnasium is shown in the latter portion of the building.

the book storage room towards another classroom wing which may be located 40 feet or more to the west. The addition of this classroom wing at some future date would approximately double the student capacity of the school at a very low cost, since only classrooms would be involved without expensive facilities of the auditorium-cafeteria-gymnasium and similar central facilities. The heating and plumbing facilities of the school have been developed so that future extension may be made without any major additions to present mechanical facilities.

Interior finishes of the classroom wing have been carefully developed with variations in the flooring colors and painted cinder block walls. Each classroom is slightly different. Floors are asphalt tile and ceilings are acoustical tile throughout. Built-in corridor lockers are provided in the glazed tile wainscot of the corridors, and additional locker facilities may be found in the large boys' and girls' locker rooms of the gymnasium.

NATURAL LIGHT is provided in all corridors of the building through plastic-domed skylights in addition to supplementary electrical lighting which may be used at night. All corridor floors are soft colored terrazzo complementing the soft green glazed tile wainscots and acoustical tile ceilings.

All rooms are furnished with thermostatic controls and a complete unit ventilator system, and with window-wall shelving for book storage and miscellaneous storage.

Electric lighting throughout all of the classrooms is of a modern stripped fluorescent fixture containing ample illumination to meet the most modern standards. The school has a completely developed program system so that a number of various school programs may be operated simultaneously in accordance with predetermined arrangements. This program system also provides for future expansion of the facilities.

Each room is connected to the main office by an inter-communication telephone system, and provision has been made for a complete sound system operated from a control room adjacent to the office which may be used for student programs, general announcements, radio programs, and other school needs.

The radio system has been designed so that programs may be originated in the cafeteria or in the gymnasium and relayed to other parts of the building. Microphone outlets, of course, are provided in the office suite, cafeteria and gymnasium. Special provisions are made so that the system may be used as a public address system within either the cafeteria or the gymnasium for activities such as community dinners, basketball games, stage programs, etc.

The boiler room is located under the main lobby with two packaged boiler units, equipped with fully automatic controls and combination gas-oil burners. Ventilation equipment for the entire gymnasium-cafeteria wing is located under the corridor between the gymnasium and cafeteria areas.

# Bishop To Dedicate Auburn High School

(Continued from Page 1)

Sister Margaret Josephine, S.S.J., is in charge of the music department. Sister studied voice at the Eastman School of Music with Arthur Kraut and Alfred Spouse at Marywood College and in Cleveland Sister has worked with Hans Barth Piano Workshops. With Sister Florin, Sister was coordinator for the Sisters of St. Joseph in planning the Diocesan Music Syllabus.

Donald Bucci, 1955 graduate of Notre Dame University, will serve as coach for the high school teams. In his senior year at Notre Dame, Bucci served as freshman football coach. In 1950 he was named to the first string all-sport team by Ohio State.

Courses at Mt. Carmel High will include college entrance courses, business, homemaking and pre-nursing. Other subjects will be added as needed.

Plans currently call for a football team with future plans for basketball and other sports.

HOLY FAMILY High School, the first Catholic high school in Auburn, is currently conducting classes for junior and senior students. During the next two years,

# COURIER-JOURNAL Friday, September 16, 1955 11 Auburn CDA Board Elects Miss Harmon

Overcrowded conditions of Holy Family High School necessitated the erection of larger and more modern facilities to care for the steadily increasing enrollment. The new high school has a capacity of 500 students with provisions for expansion in certain departments there are provisions for 800 students.

Holy Family High School was established in 1930 by the late Rt. Rev. Msgr. John F. Conway, V.F., pastor of Holy Family Parish in Auburn.

Announcement was made that Court Auburn will be represented at a Catholic Daughter conference Sunday, October 16 in Geneva by Mrs. Frank, Mrs. Foster, Mrs. Lawrence G. Salzer, Mrs. Louise F. Merina, and Mrs. John Madden.

Mrs. John F. Foster, Mrs. Theodore A. Busch, and Miss Evelyn M. Murray were named to the Resolution Committee of the Court.

Plans currently call for a football team with future plans for basketball and other sports.

HOLY FAMILY High School, the first Catholic high school in Auburn, is currently conducting classes for junior and senior students. During the next two years,

Members Sought In Ovid Campaign

Ovid—A membership drive was planned at the first meeting of the Holy Name Society of the Holy Cross Parish, held in Columbus Hall. Plans were also discussed for continuing improvements in the parish hall.

Members Sought In Ovid Campaign

All officers were present. President George Millsap presided. Others in attendance were: Paul Ryan, secretary; Daniel Gallagher, treasurer; and Glenn J. Corcoran, marshal.

WONDERFUL TO SEE  
Another Catholic High School being dedicated to the education and training of Tomorrow's Leaders.

GOOD TO KNOW  
that Catholic Educational Co-educational facilities are keeping strong pace with growing demands. We congratulate the Carmelite Fathers and the Sisters of St. Joseph upon the completion and dedication of their new

MT. CARMEL HIGH SCHOOL  
AUBURN, NEW YORK

BEST WISHES FROM  
Bastian Brothers Company  
1600 Clinton Avenue North  
Rochester 21, N. Y.

JEWELRY FOR GRAMMAR AND HIGH SCHOOL  
COMMENCEMENT ANNOUNCEMENTS AND PLACE CARDS  
BADGES AND EMBLEMS FOR SOCIETIES

A Noteworthy Achievement In Education  
For the Catholic Youth of Auburn

# MT. CARMEL HIGH SCHOOL

Auburn, N. Y.

SINCERE CONGRATULATIONS TO THE  
*Carmelite Fathers*  
and the Sisters of St. Joseph

A Modern Co-educational School Dedicated to GOD and COUNTRY

---

**DEDICATION CEREMONIES SUNDAY, SEPT. 18th 3 P. M.**

BISHOP JAMES E. KEARNEY, DIOCESE OF ROCHESTER, PRESIDING

This extensive 500 student-capacity school has provisions for an economical expansion of both east and west wings. Built at a cost of \$1,200,000, it provides 10 classrooms to accommodate an initial enrollment of 240 freshmen and sophomores, boys and girls combined. The Carmelite fathers will instruct the boys and the Sisters of St. Joseph will instruct the girls in the co-educational school. A modern gymnasium and a cafeteria are included in the building's facilities. The school was opened for the year's classes on Monday, September 12.

THIS CONGRATULATORY MESSAGE IS SPONSORED BY THE FOLLOWING FIRMS:

J. F. CALLAHAN TRUCKING CO. HAULERS OF Crushed Stone — Bituminous Concrete — Sand — Gravel — Transit-Mix Concrete AUBURN, NEW YORK	J. J. HARRINGTON CO., INC. General Contractors AUBURN, NEW YORK
CAYUGA PLATE GLASS CO., 4 E. GENESEE ST. AUBURN, N. Y.	R. L. SCHOOLEY Excavating Contractors 14 YORK ST. AUBURN, NEW YORK
CENTRAL CITY PAINTING CO., INC. 109 DECKER ST. SYRACUSE 3, N. Y.	STEARNS & BERGSTROM, INC. Tile — Marble — Slate — Terrazzo 510 JAMESVILLE AVE. SYRACUSE 5, N. Y.
CORTRIGHT ELECTRIC SYRACUSE — AUBURN — OLEAN ITHACA — HUDSON FALLS	BASTIAN BROTHERS COMPANY 1600 CLINTON AVE. NORTH ROCHESTER 21, N. Y. Jewelry for Grammar and High School