

American Education Week

Nazareth College Issues 'Open House' Bid

Nazareth College, under the direction of the Sisters of St. Joseph, who are marking their centenary year in the Rochester Diocese, will open its doors to the general public during American Education Week, November 7 to 13.

Mother Helene president, Sister Rose Angela, Dean, the

American Education Week

Nazareth College Invites

The Public To

'Open House'

Tuesday, Nov. 9 — 5 p.m. - 10 p.m.

Trustees, Faculty, and Students, extend an invitation to parishioners of all the diocesan churches to Open House, Tuesday evening, November 9, from 5 p.m. to 10 p.m. Opportunity will be given to visit all departments of the college, as well as the library, student rooms, cafeteria and auditorium. Laboratories and classrooms will be open and heads of departments will be available to answer questions and give information.

At 8:30 p.m. on Tuesday evening a symposium on the place of the college in American Education will be presented in the college auditorium under the chairmanship of the Rev. William H. Shannon, chaplain and professor of Theology at the college.

In this program the religious faculty will be represented by Sister St. Catherine, Dean of Studies; the lay faculty by Miss Rosemary White, Professor of English; the Alumnae by Miss Alice Foley, principal of Brighton No. 1 elementary school; and the Students by Miss Mary Deane, senior Sociology major from Geneva.

Following the symposium on next Tuesday evening, there will be a coffee hour in the newly decorated cafeteria, where luncheon is served to all students daily.

NAZARETH COLLEGE students receive during their four years of college adequate preparation for entry positions in Teaching, Social Work, Nursing, Laboratory work in industry or the medical field, and Business. These are the fields most popular with women, and those where more than 75% of all women workers are employed.

In addition to the regular courses of instruction, students participate in field work. Senior Sociology majors spend Tuesday of each week in orientation visits to the various social agencies in Rochester and western New York. Directors of the institutions explain the aims and functions of their work to the students who have the opportunity of observing first-hand the operation of the institutions. They also have a full month of supervised field practice in a Rochester social agency.

Senior education students — majors in various academic and special subjects, such as Art, Music, Business — likewise spend Tuesday-mornings in observation of classes at various public and parochial schools. They also have a block of cadet teaching from Thanksgiving to Christmas.

BIOLOGY majors who plan to become Medical Technologists spend the twelve months after their junior year at St. Joseph's Hospital in Elmira in clinical training, which qualifies them for the examination for Medical Technologists, conducted by the

American Society of Clinical Pathologists.

Business students are encouraged to obtain part-time and summer employment in their chosen field and are assisted in obtaining such positions by the Placement Bureau of the College.

Social life at Nazareth College is conducted through various types of extra-curricular activities. Students are given the opportunity for experience in organization, cooperation, and leadership as a preparation of life.

Nearness to St. John Fisher College for men is a real advantage in planning social events, as well as other cooperative activities. The Soph Hop which is scheduled for Friday, Nov. 5 will be preceded by a Nazareth-St. John Fisher card party in the attractively furnished Social Room in the Administration Building.

Joint Sodality meetings and meetings of the National Federation of Catholic College Students commissions are also examples of this type of cooperation. The extra-curricular program of Nazareth includes dances and seasonal parties such as Halloween, Christmas and St. Patrick's. Also, out-door activities, including cabin parties, picnics, sports nights, and a monthly recreation program for the resident students.

A SPECIAL lecture program has been scheduled this year, including such noted speakers as Sir Arnold Lunn, English conversationalist on November 15; U. S. Congressman Kenneth E. Keating; Dr. Arthur I. Abel, Professor of History at Notre Dame University; Charles Brady, Professor of English and author of 'Stage of Fools' and Richard Pattee who will speak in the spring on Latin American and Communist infiltration.

Music plays an important part in the college program. In addition to the regular Music course, which prepares public school music teachers, the college boasts a fine Glee Club under the direction of Mr. J. Theodore Hollenbach. Beside singing at various college functions, the Glee Club presents a spring concert each year — this year on March 17 — and also sings with the Rochester Oratorio Society on special occasions. On April 3 all the students will attend the production of 'Back to Mass in B-Minor' at the Eastman Theatre.

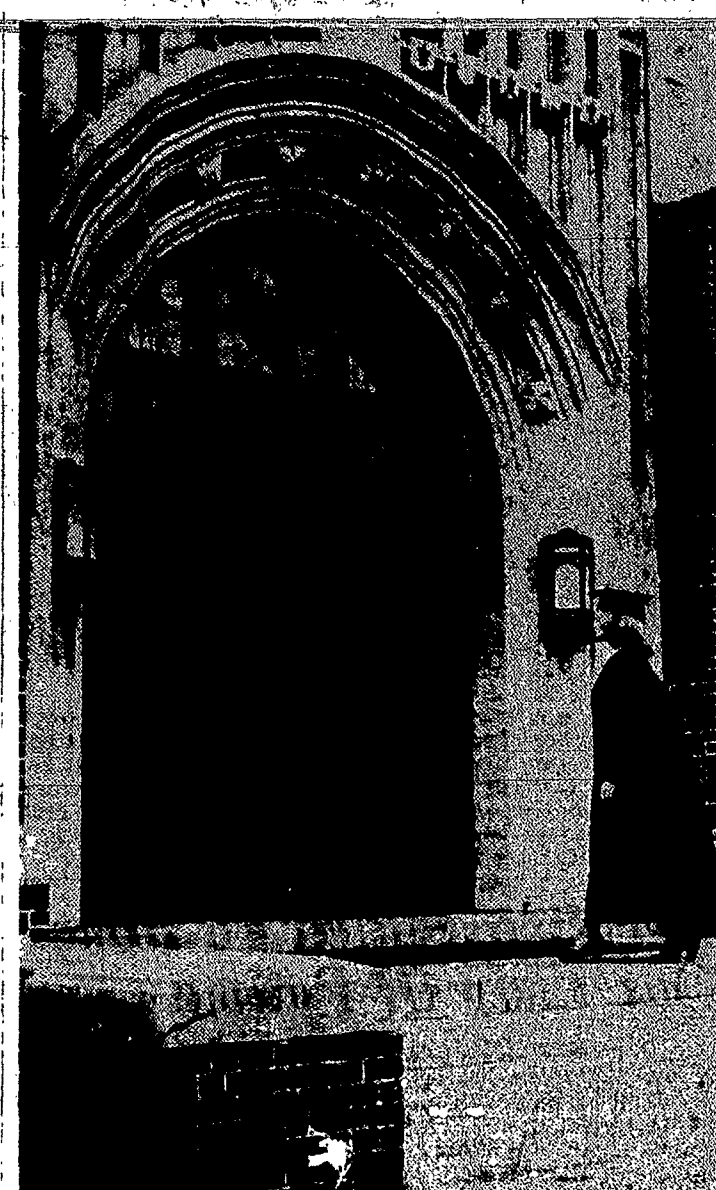
CLOSE RIVAL to the Music Department in popularity is the Fine Arts department, which prepares public school teachers for both the elementary and secondary schools, as well as fashion illustrators and lay-out artists. Each year the seniors schedule an exhibit which attracts wide attention.

The record of the placement of Nazareth College graduates has been an outstanding one. For many years Nazareth has recognized the modern woman's need of specific preparation for professional and business life. Nazareth graduates are teaching in most of the public schools in Rochester and the surrounding area. Due to the critical shortage of teachers, especially in the elementary field the past few years, but now extending to the secondary schools as well, Nazareth graduates have been able to obtain teaching positions.

In 1954 at least 6 teaching jobs were available for each senior who wanted to teach immediately on graduation.

A substantial number of those who preferred elementary teaching have enrolled during the past six years in the summer program offered to Liberal Arts graduates by the State Teachers Colleges which qualifies them for a Master's degree in elementary education. Under this plan they accept a position on graduation and begin their summer work immediately, continuing each summer, usually three or four, until they receive their degrees.

NAZARETH ALUMNAE are working in all of the social



Entrance To Nazareth College

Southern Tier Edition

THE CATHOLIC
Courier Journal
OFFICIAL NEWS-PAPER OF THE ROCHESTER DIOCESE

FRIDAY, NOVEMBER 5, 1954

Department in popularity is the Fine Arts department, which prepares public school teachers for both the elementary and secondary schools, as well as fashion illustrators and lay-out artists. Each year the seniors schedule an exhibit which attracts wide attention.

The record of the placement of Nazareth College graduates has been an outstanding one. For many years Nazareth has recognized the modern woman's need of specific preparation for professional and business life. Nazareth graduates are teaching in most of the public schools in Rochester and the surrounding area. Due to the critical shortage of teachers, especially in the elementary field the past few years, but now extending to the secondary schools as well, Nazareth graduates have been able to obtain teaching positions.

In 1954 at least 6 teaching jobs were available for each senior who wanted to teach immediately on graduation.

A substantial number of those who preferred elementary teaching have enrolled during the past six years in the summer program offered to Liberal Arts graduates by the State Teachers Colleges which qualifies them for a Master's degree in elementary education. Under this plan they accept a position on graduation and begin their summer work immediately, continuing each summer, usually three or four, until they receive their degrees.

NAZARETH ALUMNAE are working in all of the social

agencies in Rochester and several now hold responsible positions in the New York State Conference of Social Work, as well as in other states, in Puerto Rico, in South America and in Europe.

All of the hospitals in Rochester employ graduates of Nazareth College as nurses, and as medical technologists.

Science Alumnae are found in medical research, in nursing schools as instructors, and in industry, wherever women scientists are in demand in this area.

Practically all of Rochester's large industries and business organizations, as well as many small business and professional offices employ graduates of the Business Department.

The following tabulation of placement for the five-year period ending in 1953 shows the percentage of Nazareth College graduates in each of the popular fields:

Teaching, 38%; Social Work, 13%; Business and Industry, 12%; Medical Field — Nurses, Technologists, Scientific Research, 20%.

A small percentage of Alumnae entered other fields, librarianship, government service of some kind, radio advertising, while a substantial percentage of each class were married shortly after graduation.

Nazareth College is the culmination of the educational work done by the Sisters of St. Joseph in the Rochester diocese during the past one hundred years.

Began in 1924 in the "Glass House" on Lake Avenue, adja-

\$125,000 Campaign For New School Slated By Our Lady Of Lourdes Parish In Elmira

First steps in a campaign to raise a \$125,000 building fund for a new school and convent were taken by parishioners of Our Lady of Lourdes Parish, Elmira, in the rectory at 120 Fairmont Road, last week.

Preliminary steps for the drive included naming a general committee and selection of advisory committees and division leaders. The drive is set for Dec. 5 to 11, and will include both a special gift and general solicitation. Campaign headquarters are in the Church hall.

AN OPENING DINNER scheduled for Saturday, Dec. 4, in the church hall, will be the signal for more than 200 workers to begin the parish solicitation. His Excellency Bishop Kearney will be the principal speaker.

Architects plans for the new building show a modern design, two story structure which will be approximately 214 ft. long on Demarest Parkway and 92 ft. long on West First Street. The first story will comprise an eight-classroom school, complete with audio visual room, library and kindergarten. The second floor will be the convent, plans include accommodations for eight nuns, complete with chapel. Future plans also include a combination gymnasium and auditorium.

THE EXTERIOR of the proposed school will have a base of field stone to match the present church on W. Church St., the balance of the exterior wall to be of an attractive brick composition. It is estimated the finished school will be able to accommodate over 300 pupils.

The Rev. Leo G. Schwab, pastor, is honorary chairman of the fund-raising campaign, with the Rev. L. Emmett Davis, assistant pastor, as honorary vice chairman.

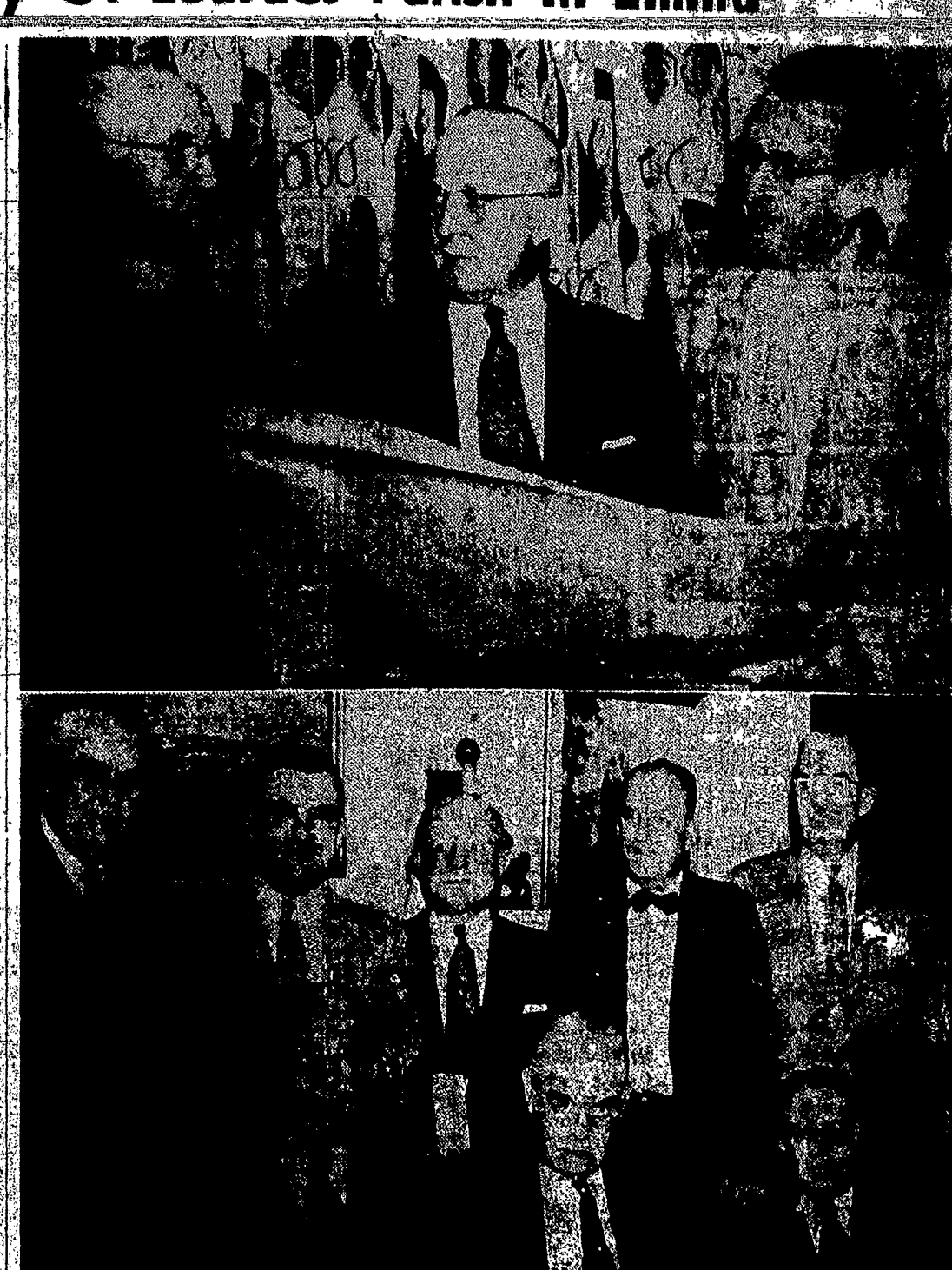
Parish workers are headed by J. Albert Coughlin and Dr. Gerald T. Connelly, co-general chairmen; special gifts, Matthew E. Kennedy, chairman, and Lawrence W. Hastings and Leo E. Connelly, vice chairmen; general solicitation, Mortimer L. McInerney, chairman, and Daniel F. Kennedy and Cressy A. Morrey, vice chairmen.

Members of the advisory committee are J. Joseph MacNamara, Paul F. McLane, Francis T. Woods, William D. Hovey, Joseph E. Chely, William J. Murphy, Dr. James A. Mark, James E. Casey, John D. Frawley, Thomas J. Maxey, Charles T. Burke, John R. Melvin, A. William DeFilippo and John E. Sullivan.

Division leaders are Dr. Norman Baker, William Bowers, Edward Bayler, Edward Casey, Gordon Connolly, John J. Crowley, Jr., Clarence Glometti, Charles J. Kromer, William Little, Dr. John F. Lynch, William Nagel and Wilford Williams.

cent to Nazareth Academy, the college moved to its present location on East Avenue in January 1941, with three separate units — the Administration Building, the Cafeteria and Auditorium Building and the large residence hall, now called Macdallo Hall.

At various times three other smaller residence halls were acquired, Santa Maria and St. Joseph's for Freshmen and LeBury for senior resident students. Expansion in the future calls for another large dormitory and a new library building.



ARCHITECTS' PLANS for a new school and convent in Our Lady of Lourdes Parish, Elmira are viewed (top photo, from left) by Rev. Leo G. Schwab, pastor; J. Albert Coughlin and Dr. Gerald Connelly, fund-raising campaign co-chairmen; General committee on fund raising (lower photo), seated are, from left: Mortimer L. McInerney, Matthew E. Kennedy, Cressy A. Morrey; standing, Leo E. Connelly, Dr. Gerald T. Connelly, J. Albert Coughlin, Lawrence W. Hastings and Thomas F. Kennedy.

Temporary Officers Elected By Legion Of Mary Group

Temporary officers have been selected for the newly organized Legion of Mary in St. Peter and Paul Parish, Elmira. Permanent officers will be approved by the Rochester Curia at the time of the affiliation in 1955. Chosen were:

President, Carl Webb; vice president, Miss Frances Battersby; secretary, Floyd Nodine; treasurer, Thomas Lane.

On Sunday, Nov. 14, members will attend a diocesan meeting at Saint Anne Church, Rochester. They will be introduced to the other members of the Legion from Rochester, Batavia, Hornell, Watkins Glen, Cornell University, Niagara University, etc.

THE LEGION of Mary is organized, holds its meetings, and works in more or less the same way as the Conferences of St. Vincent de Paul. But while these concern themselves exclusively with charitable work, the Legion has as its fold the infinite variety of Catholic Action activities.

The extension and the nature of the work so undertaken make

imperative a strict organization and an immediate dependence on ecclesiastical authority. Probably the Legion is the nearest approach to the ideal of Catholic Action as fostered by the Holy Father.

Attend Daily Mass

of the work so undertaken make

On Sunday, Nov. 14, members will attend a diocesan meeting at Saint Anne Church, Rochester. They will be introduced to the other members of the Legion from Rochester, Batavia, Hornell, Watkins Glen, Cornell University, Niagara University, etc.

THE LEGION of Mary is organized, holds its meetings, and works in more or less the same way as the Conferences of St. Vincent de Paul. But while these concern themselves exclusively with charitable work, the Legion has as its fold the infinite variety of Catholic Action activities.

The extension and the nature of the work so undertaken make

imperative a strict organization and an immediate dependence on ecclesiastical authority. Probably the Legion is the nearest approach to the ideal of Catholic Action as fostered by the Holy Father.

Attend Daily Mass

of the work so undertaken make

On Sunday, Nov. 14, members will attend a diocesan meeting at Saint Anne Church, Rochester. They will be introduced to the other members of the Legion from Rochester, Batavia, Hornell, Watkins Glen, Cornell University, Niagara University, etc.

THE LEGION of Mary is organized, holds its meetings, and works in more or less the same way as the Conferences of St. Vincent de Paul. But while these concern themselves exclusively with charitable work, the Legion has as its fold the infinite variety of Catholic Action activities.

The extension and the nature of the work so undertaken make

imperative a strict organization and an immediate dependence on ecclesiastical authority. Probably the Legion is the nearest approach to the ideal of Catholic Action as fostered by the Holy Father.

Attend Daily Mass

of the work so undertaken make

On Sunday, Nov. 14, members will attend a diocesan meeting at Saint Anne Church, Rochester. They will be introduced to the other members of the Legion from Rochester, Batavia, Hornell, Watkins Glen, Cornell University, Niagara University, etc.

THE LEGION of Mary is organized, holds its meetings, and works in more or less the same way as the Conferences of St. Vincent de Paul. But while these concern themselves exclusively with charitable work, the Legion has as its fold the infinite variety of Catholic Action activities.

The extension and the nature of the work so undertaken make

imperative a strict organization and an immediate dependence on ecclesiastical authority. Probably the Legion is the nearest approach to the ideal of Catholic Action as fostered by the Holy Father.

Attend Daily Mass

of the work so undertaken make

On Sunday, Nov. 14, members will attend a diocesan meeting at Saint Anne Church, Rochester. They will be introduced to the other members of the Legion from Rochester, Batavia, Hornell, Watkins Glen, Cornell University, Niagara University, etc.

THE LEGION of Mary is organized, holds its meetings, and works in more or less the same way as the Conferences of St. Vincent de Paul. But while these concern themselves exclusively with charitable work, the Legion has as its fold the infinite variety of Catholic Action activities.

The extension and the nature of the work so undertaken make

imperative a strict organization and an immediate dependence on ecclesiastical authority. Probably the Legion is the nearest approach to the ideal of Catholic Action as fostered by the Holy Father.

Attend Daily Mass

of the work so undertaken make

On Sunday, Nov. 14, members will attend a diocesan meeting at Saint Anne Church, Rochester. They will be introduced to the other members of the Legion from Rochester, Batavia, Hornell, Watkins Glen, Cornell University, Niagara University, etc.

THE LEGION of Mary is organized, holds its meetings, and works in more or less the same way as the Conferences of St. Vincent de Paul. But while these concern themselves exclusively with charitable work, the Legion has as its fold the infinite variety of Catholic Action activities.

The extension and the nature of the work so undertaken make

imperative a strict organization and an immediate dependence on ecclesiastical authority. Probably the Legion is the nearest approach to the ideal of Catholic Action as fostered by the Holy Father.

Attend Daily Mass

of the work so undertaken make

On Sunday, Nov. 14, members will attend a diocesan meeting at Saint Anne Church, Rochester. They will be introduced to the other members of the Legion from Rochester, Batavia, Hornell, Watkins Glen, Cornell University, Niagara University, etc.

THE LEGION of Mary is organized, holds its meetings, and works in more or less the same way as the Conferences of St. Vincent de Paul. But while these concern themselves exclusively with charitable work, the Legion has as its fold the infinite variety of Catholic Action activities.

The extension and the nature of the work so undertaken make

imperative a strict organization and an immediate dependence on ecclesiastical authority. Probably the Legion is the nearest approach to the ideal of Catholic Action as fostered by the Holy Father.

Attend Daily Mass

of the work so undertaken make

On Sunday, Nov. 14, members will attend a diocesan meeting at Saint Anne Church, Rochester. They will be introduced to the other members of the Legion from Rochester, Batavia, Hornell, Watkins Glen, Cornell University, Niagara University, etc.

THE LEGION of Mary is organized, holds its meetings, and works in more or less the same way as the Conferences of St. Vincent de Paul. But while these concern themselves exclusively with charitable work, the Legion has as its fold the infinite variety of Catholic Action activities.

The extension and the nature of the work so undertaken make

imperative a strict organization and an immediate dependence on ecclesiastical authority. Probably the Legion is the nearest approach to the ideal of Catholic Action as fostered by the Holy Father.

Attend Daily Mass

of the work so undertaken make

On Sunday, Nov. 14, members will attend a diocesan meeting at Saint Anne Church, Rochester. They will be introduced to the other members of the Legion from Rochester, Batavia, Hornell, Watkins Glen, Cornell University, Niagara University, etc.

THE LEGION of Mary is organized, holds its meetings, and works in more or less the same way as the Conferences of St. Vincent de Paul. But while these concern themselves exclusively with charitable work, the Legion has as its fold the infinite variety of Catholic Action activities.

The extension and the nature of the work so undertaken make

imperative a strict organization and an immediate dependence on ecclesiastical authority. Probably the Legion is the nearest approach to the ideal of Catholic Action as fostered by the Holy Father.

Attend Daily Mass

of the work so undertaken make

On Sunday, Nov. 14, members will attend a diocesan meeting at Saint Anne Church, Rochester. They will be introduced to the other members of the Legion from Rochester, Batavia, Hornell, Watkins Glen, Cornell University, Niagara University, etc.

THE LEGION of Mary is organized, holds its meetings, and works in more or less the same way as the Conferences of St. Vincent de Paul. But while these concern themselves exclusively with charitable work, the Legion has as its fold the infinite variety of Catholic Action activities.

The extension and the nature of the work so undertaken make

imperative a strict organization and an immediate dependence on ecclesiastical authority. Probably the Legion is the nearest approach to the ideal of Catholic Action as fostered by the Holy Father.

Attend Daily Mass

of the work so undertaken make

On Sunday, Nov. 14, members will attend a diocesan meeting at Saint Anne Church, Rochester. They will be introduced to the other members of the Legion from Rochester, Batavia, Hornell, Watkins Glen, Cornell University, Niagara University, etc.

THE LEGION of Mary is organized, holds its meetings, and works in more or less the same way as the Conferences of St. Vincent de Paul. But while these concern themselves exclusively with charitable work, the Legion has as its fold the infinite variety of Catholic Action activities.

The extension and the nature of the work so undertaken make

imperative a strict organization and an immediate dependence on ecclesiastical authority. Probably the Legion is the nearest approach to the ideal of Catholic Action as fostered by the Holy Father.

Attend Daily Mass

of the work so undertaken make

On Sunday, Nov. 14, members will attend a diocesan meeting at Saint Anne Church, Rochester. They will be introduced to the other members of the Legion from Rochester, Batavia, Hornell, Watkins Glen, Cornell University, Niagara University, etc.

THE LEGION of Mary is organized, holds its meetings, and works in more or less the same way as the Conferences of St. Vincent de Paul. But while these concern themselves exclusively with charitable work, the Legion has as its fold the infinite variety of Catholic Action activities.

The extension and the nature of the work so undertaken make

imperative a strict organization and an immediate dependence on ecclesiastical authority. Probably the Legion is the nearest approach to the ideal of Catholic Action as fostered by the Holy Father.

Attend Daily Mass

of the work so undertaken make

On Sunday, Nov. 14, members will attend a diocesan meeting at Saint Anne Church, Rochester. They will be introduced to the other members of the Legion from Rochester, Batavia, Hornell, Watkins Glen, Cornell University, Niagara University, etc.

THE LEGION of Mary is organized, holds its meetings, and works in more or less the same way as the Conferences of St. Vincent de Paul. But while these concern themselves exclusively with charitable work, the Legion has as its fold the infinite variety of Catholic Action activities.

The extension and the nature of the work so undertaken make

imperative a strict organization and an immediate dependence on ecclesiastical authority. Probably the Legion is the nearest approach to the ideal of Catholic Action as fostered by the Holy Father.

Attend Daily Mass

of the work so undertaken make

On Sunday, Nov. 14, members will attend a diocesan meeting at Saint Anne Church, Rochester. They will be introduced to the other members of the Legion from Rochester, Batavia, Hornell, Watkins Glen, Cornell University, Niagara University, etc.

THE LEGION of Mary is organized, holds its meetings, and works in more or less the same way as the Conferences of St. Vincent de Paul. But while these concern themselves exclusively with charitable work, the Legion has as its fold the infinite variety of Catholic Action activities.

The extension and the nature of the work so undertaken make

imperative a strict organization and an immediate dependence on ecclesiastical authority. Probably the Legion is the nearest approach to the ideal of Catholic Action as fostered by the Holy Father.

Attend Daily Mass

of the work so undertaken make

On Sunday, Nov. 14, members will attend a diocesan meeting at Saint Anne Church, Rochester. They will be introduced to the other members of the Legion from Rochester, Batavia, Hornell, Watkins Glen, Cornell University, Niagara University, etc.

THE LEGION of Mary is organized, holds its meetings, and works in more or less the same way as the Conferences of St. Vincent de Paul. But while these concern themselves exclusively with charitable work, the Legion has as its fold the infinite variety of Catholic Action activities.

The extension and the nature of the work so undertaken make

imperative a strict organization and an immediate dependence on ecclesiastical authority. Probably the Legion is the nearest approach to the ideal of Catholic Action as fostered by the Holy Father.

Attend Daily Mass

of the work so undertaken make

On Sunday, Nov. 14, members will attend a diocesan meeting at Saint Anne Church, Rochester. They will be introduced to the other members of the Legion from Rochester, Batavia, Hornell, Watkins Glen, Cornell University, Niagara University, etc.

THE LEGION of Mary is organized, holds its meetings, and works in more or less the same way as the Conferences of St. Vincent de Paul. But while these concern themselves exclusively with charitable work, the Legion has as its fold the infinite variety of Catholic Action activities.

The extension and the nature of the work so undertaken make

imperative a strict organization and an immediate dependence on ecclesiastical authority. Probably the Legion is the nearest approach to the ideal of Catholic Action as fostered by the Holy Father.

Attend Daily Mass

of the work so undertaken make

On Sunday, Nov. 14, members will attend a diocesan meeting at Saint Anne Church, Rochester. They will be introduced to the other members of the Legion from Rochester, Batavia, Hornell, Watkins Glen, Cornell University, Niagara University, etc.

THE LEGION of Mary is organized, holds its meetings, and works in more or less the same way as the Conferences of St. Vincent de Paul. But while these concern themselves exclusively with charitable work, the Legion has as its fold the infinite variety of Catholic Action activities.

The extension and the nature of the work so undertaken make

imperative a strict organization and an immediate dependence on ecclesiastical authority. Probably the Legion is the nearest approach to the ideal of Catholic Action as fostered by the Holy Father.

Attend Daily Mass

of the work so undertaken make

On Sunday, Nov. 14, members will attend a diocesan meeting at Saint Anne Church, Rochester. They will be introduced to the other members of the Legion from Rochester, Batavia, Hornell, Watkins Glen, Cornell University, Niagara University, etc.

THE LEGION of Mary is organized, holds its meetings, and works in more or less the same way as the Conferences of St. Vincent de Paul. But while these concern themselves exclusively with charitable work, the Legion has as its fold the infinite variety of Catholic Action activities.

The extension and the nature of the work so undertaken make

imperative a strict organization and an immediate dependence on ecclesiastical authority. Probably the Legion is the nearest approach to the ideal of Catholic Action as fostered by the Holy Father.

Attend Daily Mass

of the work so undertaken make

On Sunday, Nov. 14, members will attend a diocesan meeting at Saint Anne Church, Rochester. They will be introduced to the other members of the Legion from Rochester, Batavia, Hornell, Watkins Glen, Cornell University, Niagara University, etc.