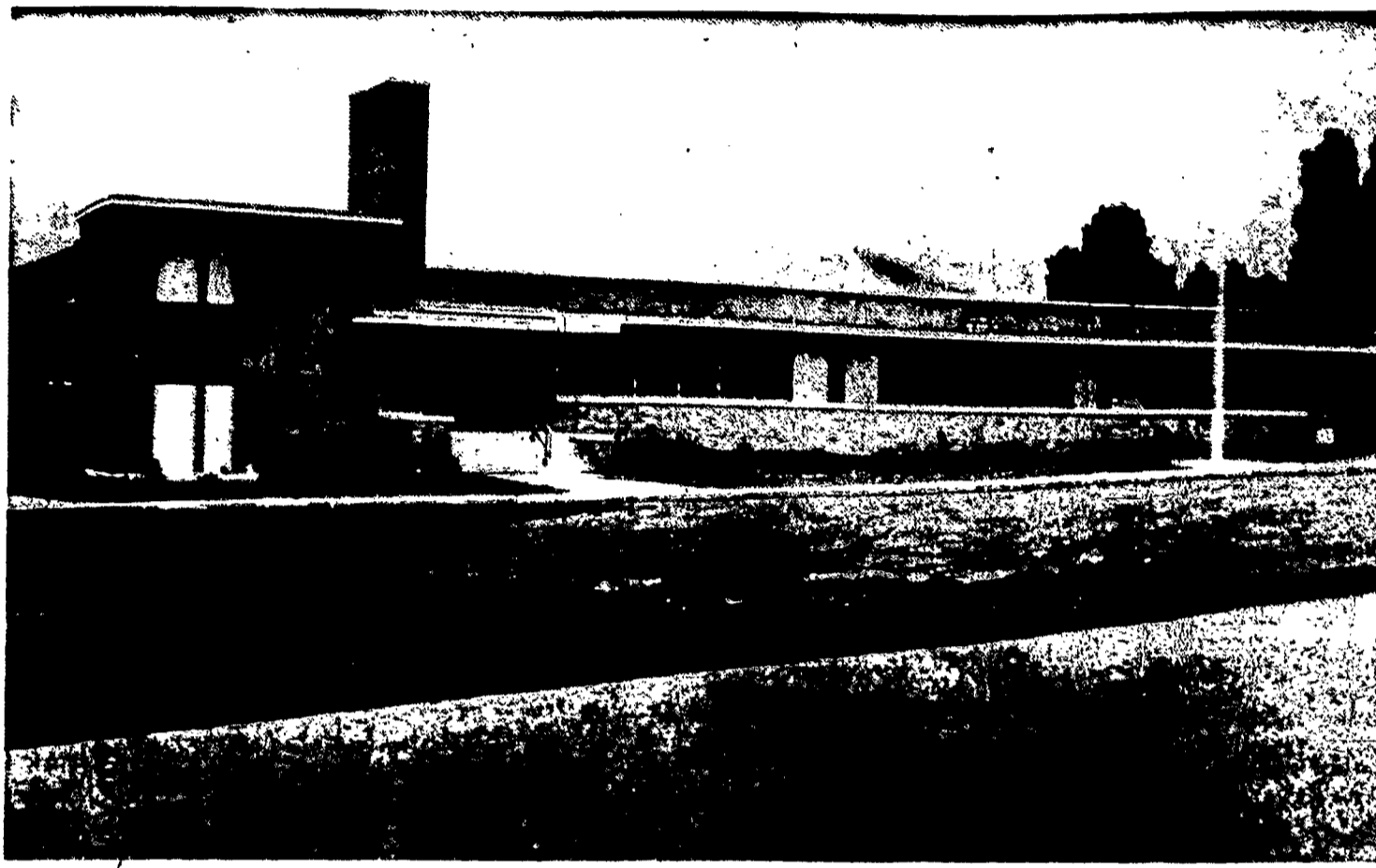


Presenting

The New Mother of Sorrows School



Most Reverend James E. Kearney, D.D. Bishop of Rochester



EXTERIOR VIEW OF THE NEW SCHOOL OF OUR MOTHER OF SORROWS — LATTA ROAD AT MT. READ BLVD., ROCHESTER, NEW YORK

4900 MT. READ BLVD.

AT LATTA ROAD

THIS BEAUTIFUL NEW MODERN SCHOOL — WILL BE DEDICATED SUNDAY, OCTOBER 11, 1953, BY HIS EXCELLENCY THE MOST REVEREND JAMES E. KEARNEY, BISHOP OF ROCHESTER.

DEDICATION — SUNDAY, OCT. 11

Catholic Education at its best is exemplified in the beautiful, newest addition to the Schools of the Rochester Diocese. Culminating years of planning at the sacrifice and generosity of thousands of local Parishioners and friends, we invite you to share with us the Joys of Dedication Sunday, October 11, 1953.



Rev. Andrew W. Teuschel, Ass't Pastor



Reverend Daniel B. O'Rourke, Pastor of Our Mother of Sorrows Parish

OFFICIAL DEDICATION PROGRAM

All Day Sunday, October 11 For Parishioners And Friends

SUNDAY 4 P. M.

Dedication by Bishop Kearney

Assisted by Monsignor and Priests of Rochester

MONDAY

Open House for Public School Officials

Dedicated to Principals of Parochial and Public Schools

Open House for Public Elementary, Sunday, Monday

— WE ARE MOST GRATEFUL TO THE FOLLOWING SPONSORS WHO HAVE ASSISTED US IN THIS PROGRAM —

Coyne Brothers Laths and Plastering 11 Westbourne Rd. CONgress 2270

Guarantee Iron Works Ornamental Iron — Steel Stairs 16-26 Railroad St. BAKER 9120

The Maurer Co., Inc. 31 Richmond St. HAMILTON 0030 Rochester 7, New York

F. H. Fredman Company Building Specialties 36 St. Paul St. BAKER 6425

Hadlock Paint Co. Pratt and Lambert Paints & Finishes 466-470 Central Ave. - Rochester 5, N. Y.

W. A. McCormick 4 Lake Ave. LOcust 6960

Genesee Flooring Co. General Flooring Contractors 178 Ellicott St. GENesee 4675

H. J. Kearsce Paving Contractor 980 Westfall Road MCOnroe 2795

George Miller Brick Co. 734 Ridgeway Ave. - Rochester 13, N. Y.

Goodstone Manufacturing Co., Inc. 470 Hollenbeck St. CONgress 5325

H. P. Lenhard & Sons, Inc. 1546 Lyell Ave. - Rochester 6, N. Y.

George B. Whelehan All Kinds of Insurance 3311 Lake Ave. CHARlotte 0170 Rochester 13, New York

Wood Products 225 West 22nd St. GLEenwood 8834

Brick Co., Inc. 225 West 22nd St. GLEenwood 4801

Insurance Corporation 214