

Infirmiry Aid Provided Sick At St. Ann's

The demand for infirmiry care for the aged has increased alarmingly during the past few years. This is owing to advancement made in medical science. Statistics tell us that the need for care of the infirm aged will be increased greatly in the next five or ten years, and the various institutions must prepare for this condition.

St. Ann's Home for the Aged, at present, can comfortably accommodate and adequately care for fifty infirm guests in the infirmiry. The infirmiry is well equipped and serves the present needs of the patients. It consists of three floors, situated at the southern end of the building, easily accessible to visitors, and convenient for ambulance service when this is needed.

The infirmiry is pleasantly laid out in twenty single rooms, seven two-bed wards, and four four-bed wards, having a total capacity of fifty beds.

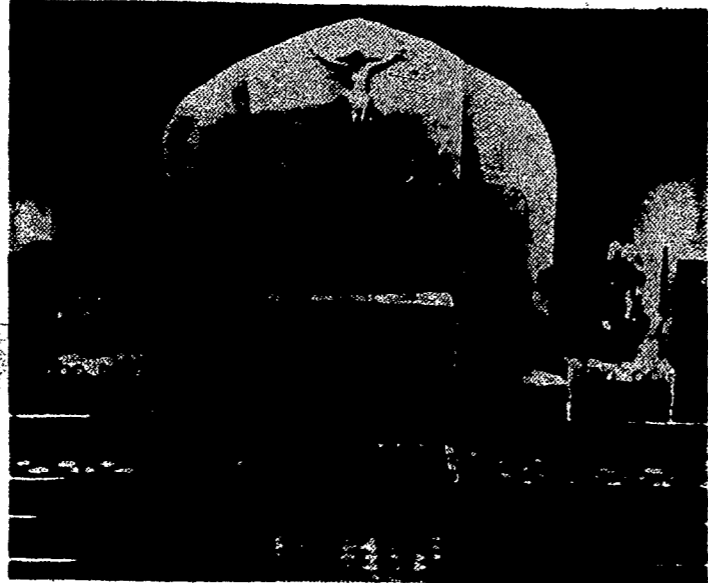
The beautiful sunny bedrooms, the ample sun parlors, the wide corridors, all provide for the proper care of the sick and infirm and add much to the comfort and happiness of the guests.

Guests in wheel chairs enjoy the radio and television sets in the sun parlors. They assemble there in the evenings for the Rosary and many prayers which are offered for their own needs and those of others.

Lavatories, utility rooms, diet kitchens, nurses' restrooms and pharmacies are centrally located on each hall. Cherry rest rooms supplement the recreation space provided by the sun-parlors.

Presently serving at St. Ann's are five graduate professional nurses and a staff of registered practical nurses sufficient for ample nursing care. Nursing care is rendered to those guests day and night whenever required.

A physician appointed for the care of the sick comes to St. Ann's whenever called. The individual guest may at any time have the services of another physician of his or her own choice.



Redecorated Chapel at St. Ann's Home.

Aged Folk Find Joy In Redecorated Chapel

The Chapel at St. Ann's Home for the Aged on Lake Avenue, pictured above has recently been redecorated.

For the dear, older people who reside there, the Chapel has always been a source of great comfort. Now, with its soft, warm coloring, it is even more a haven of peace.

The beautiful life like and almost life like crucifix of hand carved oak over the main altar has adorned the chapel for many years. A special, artistic treatment has enlivened its real beauty, so that it attracts and holds the attention. A delicate handling of the blue background has achieved a realistic effect of the sky as it must have been on the afternoon of the first Good Friday. A deep blue at the top of the crucifix, blends softly into lighter tones, until at the bottom, a very light blue is seen.

The main altar, as well as the side altars are a soft tan enhanced by gold leaf trim. A paneling effect in deeper shades of tan is carried out on the North and South walls of the Sanctuary.

A lovely, lively aqua blue with a mottled effect on the walls of the chapel make a perfect background for the delicately carved stations of the cross which have been retouched so deftly that the characters they represent ap-

pear to be very much alive. A rich brown, with a fine grain, gives the effect of a substantial wainscoting, and is a fitting complement to the colorful upper wall.

The colors are delicate and they brighten and warm the room. The work is exquisitely

ST. ANN'S HOME

1911 Lake Avenue
Sisters of St. Joseph
Superior Sister Mary Walter

Chaplain — Rev. Bartholomew L. Quirk.

Furnishes a home for aged Catholic and non-Catholic men and women. Men and women over 65 years of age are admitted by a written application through the Rochester Catholic Charities, 50 Chestnut Street, Rochester, New York.

Before admission each applicant is interviewed by the Sister Superintendent and must pass a physical examination by the institution's physician. Infirmiry care is given to guests who become chronically ill or who reach an age which necessitates nursing care.

The Home admits participants of old age assistance as well as those able to pay full or part of the cost of care. Medical care, religious service, and recreation are provided.

done. The result, a greater glory to God, whose resting place it is, and a chapel where the old folk's lives will be gladdened and enriched as they kneel to adore and praise their God.

The chapel at St. Ann's Home for the Aged, recently redecorated, is a haven of rest and spiritual comfort for the dear older people who reside at the Home.

It is most edifying to see their humble, silver heads bowed profoundly in adoration before the Blessed Sacrament. This adoration is almost perpetual, from early morning Mass until evening assembly for the rosary, the special prayers to Our Lady, as well as to the patron, Saint Joseph.

Our Dear Lord must be greatly pleased when He sees from His tabernacle home these beloved old friends of His, praying for their needs and for the needs of others. Never is He left alone during the day. Each morning nearly everyone receives the Bread of Life to sustain the soul during the lonely hours of the day. They pray without apparent weariness or distraction, never counting the time. Their prayers must rise like incense to the throne of the Divine Majesty in highest heaven, to bring back to them, His message of love and mercy.

St. Ann's Home Boasts Modern Laundry Facility

Careful consideration of the old axiom, "cleanliness is next to Godliness," will settle conclusively, any argument to the contrary.

Certainly, all of us, even in our most inert moments, feel far more comfortable when we are surrounded by order, precision, neatness and cleanliness. This fact underscores the importance of the laundry at St. Ann's Home for the Aged.

By no means, is the laundry least in the type of service essential in the operation of an institution such as St. Ann's.

Situated as it is, to the rear of the Home Buildings, the laundry building is not at all discernable to any one entering the front door of the Home. The laundry is a "behind-the-scenes" facility without which the institution of St. Ann's could not function.

St. Ann's laundry is in a building separate from the Home. This building is fire-proof in construction and its two floors provides a total of 3,500 square feet of floor space. A fire escape from the second floor is provided on the East side.

The equipment in use which is commercial in size and construction, consists of three large size washers; one extra-

tor; one tumbler; a large size drying room; and an 8 1/2-foot mangle. The equipment is maintained by an expert mechanic, and the operators are protected by the installation of adequate safety devices.

An Otis electric elevator provides transportation from floor to floor for the baskets of laundry.

All sorting of flat, laundered work is done on the first floor.

On the second floor, the fine, hand ironing is done by a staff of trained workers. A real treat is in store for one who visits this second floor on any one of the ironing days. Rows upon rows of hand ironed dresses, or stacks of crisp, hand ironed men's shirts can be seen. Any housewife can imagine what a chore it is to iron 150 dresses, or 75 men's shirts, to say nothing of the hundreds of pieces of other articles of clothing.

Nor are the workers forgotten in the layout. On the south east side of the second floor a cozy, comfortable corner with easy chairs for relaxing during rest and lunch periods, is provided.

St. Ann's staff is proud of its efficient laundry facility and cordially invites visitors to come and see for themselves.

PAINE'S

One of the World's Truly Great Drug Stores



In 1920, Paine's opened its doors to give Rochester its first prescription drug store. Today, 152 years later, this outstanding world-famous pharmacy still specializes in medicine. Over a million accurately compounded prescriptions are positive proof—Paine's is Rochester's first prescription drug store... in 1820 and Now!

Show how much you care



THE PAINE DRUG CO.

Established 1820
MAIN OR TELEPHONE ORDERS SENT POSTPAID IN N. Y. STATE
24-26 E. MAIN ST. PHONE 10cent 6708

Electrical Contractors!

SERVING
ROCHESTER
INDUSTRY,
CHURCHES,
SCHOOLS,
HOMES for
More than 30 Years

COMMERCIAL — INDUSTRIAL SERVICE
Repairs — Wiring — Sales
APPLIANCES
FOR HOME AND INDUSTRY

RETAIL APPLIANCES
SALES AND SERVICE
RADIO — TV — WASHERS —
REFRIGERATORS — IRONERS
EVERYTHING ELECTRICAL
AND LIFETIME SERVICE ON
EVERYTHING WE SELL

AT UNIVERSITY AVE.
— PARKING NEXT DOOR IN OUR STATION —
Authorized GE Appliance Dealer

HANSS ELECTRIC

BA. 5840

180 NORTH ST.