

Mirans Honor Father Dowhovich On Anniversary



Nearly 200 parishioners and friends of the Very Rev. Waldimir B. Dowhovich, pastor of St. Nicholas Ukrainian Church, Elmira Heights, at a testimonial dinner in Mark Twain Hotel last week paid tribute to Father Dowhovich on his 45th anniversary of ordination to the Holy Priesthood.

Father Dowhovich has been pastor of the Heights parish since August 1936 and has been responsible for the organization of several active parish societies including the Fehoh-Macekur Society.

The Most Rev. Constantine Bohachewsky, D.D., Bishop of the Ukrainian Catholic Diocese of the United States was unable to be present but sent a letter of commendation to the Jubilarian for his stirring efforts in the priesthood.

CORNELIUS J. MILLIKEN, president Elmira Catholic Laymen, was toastmaster and presented these guests who spoke in congratulations and wishes to the honored pastor.

Order Daniel J. Donahoe, District Attorney Paul M. DeWitt, Charles A. Highes, Nicholas Wolensky, pastor of St. Joseph's Church, Rochester, Rev. Paul Harchison, assistant St. Peter and Paul's, Auburn, Rev. Daniel R. Sullivan, St. Charles Borromeo, Elmira Heights, Rev. Arthur C. Simonetti, pastor St. Cecilia's Church, Elmira.

Rev. Magr. William J. V.F., pastor of St. Patrick's Church and Dean of the Diocese, spoke on behalf of the area priests and extended congratulations to Father Dowhovich. He also pointed out a splendid measure of cooperation that had been given by Father Dowhovich during his pastorate at St. Nicholas Church.

GUESTS INCLUDED: The Rev. Eugene Bachtalovskiy of Sayre, the Rev. Basil Ostas of Auburn, the Rev. Basil Serodowich of Syracuse and the Rev. Albert



PAYING TRIBUTE to the Very Rev. Waldimir B. Dowhovich, pastor of St. Nicholas Church, Elmira Heights, on his 45th Anniversary, Elmira's fete him at a testimonial dinner in Mark Twain Hotel. At speakers' table (from left) Paul M. Donahoe; Rev. Arthur C. Simonetti; Rev. Nicholas Wolensky; Monsignor William J. Brien, V.F.; Cornelius J. Milliken; Father Dowhovich; Rev. Paul Harchison; Rev. Daniel R. Sullivan; George Calverci; seated at table in front of guests (back to camera and clockwise) Rev. Basil Ostas, Rev. Dmytro Gulyn, Rev. Basil Serodowich, Rev. Dmytro Fedasiuk, Rev. Eugene Bachtalovskiy, Rev. Stephen Chompolko and Rev. Albert J. Simonetti. In lower photo (from left) Father Harchison; Father Dowhovich; Monsignor Brien and John Wascheyzn, banquet chairman. (Courier Staff Photos)

The affair was arranged by the combined church societies and the Catholic War Veterans Post and Auxiliary of Elmira Heights. The committee included: Honorary chairman, the Rev. Demetro Fedasiuk; general chairman, John Wascheyzn; finance committee chairman, Miss Sophia Hayduk; invitations committee chairman, Mrs. Margaret Oravec.

Ticket committee chairman, Mrs. Verna Dobranski; souvenir booklet committee chairman, William T. Kopko and Peter Beach; and publicity chairman, Miss Irene Urchak.

Serving on the banquet committee were Nicholas Martyniuk, Miss Hilda Selewach, Mrs. Anne Kowulich, George Calverci, Stephen Zawko and Miss Stella Makarowsky.

Southern Tier Edition
News
The Courier Journal
Friday, November 28, 1952
1-A

KC Admit 90 In Coming Ritual

Coming—More than 90 candidates from area Councils received the Third Degree in the Knights of Columbus Sunday afternoon at the K. of C. Home, Frank Rhode of Elmira, district deputy, directed the exemplification of the degree.

Attorney Jacob G. Welch and Paul Tammaro were in charge of arrangements for the event. Michael Bondy and Joseph Lane headed the refreshment committee.

Gift For Nuns Asked At St. Mary's Party

Annual Christmas party sponsored by the Rosary Altar Society of St. Mary's Parish, Elmira will be held in the auditorium on Tuesday evening, Dec. 2.

Mrs. Thomas O'Brien and Mrs. Peter C. Baker have been designated co-chairmen.

Those planning on being in attendance are requested to bring an article of canned food as a gift for the Sisters of St. Mary's convent.

All ladies of the parish are invited by Mrs. James P. O'Leary, president.

Elmira Church Lists 40 Hours

Forty Hours devotion will open in St. Peter and Paul's church, Elmira on Sunday at the 11 o'clock High Mass.

Services will be held each evening at 7:30 p.m. with solemn closing on Tuesday evening. Daily Masses will be celebrated at 7:30 and 8 a.m.

Promotion At Notre Dame Won By G. Schoenherr

Gerard E. Schoenherr a graduate of Aquinas Institute has received appointment at University of Notre Dame as Cadet Staff Sergeant in Air Force Reserve Officer Training Corps. Majoring in Chemical Engineering, he is the son of Mr. and Mrs. Edward W. Schoenherr of 1060 North St. in Holy Redeemer parish.

3 Marble Memorial Altars To Be Erected In Hornell Church

Hornell—St. Ann's Church will be improved and beautified before Christmas with the erection of three new marble altars.

The altars will be lasting mementos to the deceased friends and relatives of St. Ann's parishioners. By the time they are installed, they will be completely paid for by voluntary contributions.

THE SANCTUARY will be further beautified by a new white oak lectern, bearing the carved symbol of the Holy Ghost, and by installation of new lighting fixtures. High-powered lights will be housed in large circular shields, ornamented with conventionalized crosses. Iron grilles for the sanctuary doors will complement the decorative scheme of the church.

The Rev. Lawrence W. Gannon, pastor, announced that the marble for the proposed altars is now enroute to Hornell. It was shipped from Italy about the middle of the month, and will be transported from New York City to Hornell by truck.

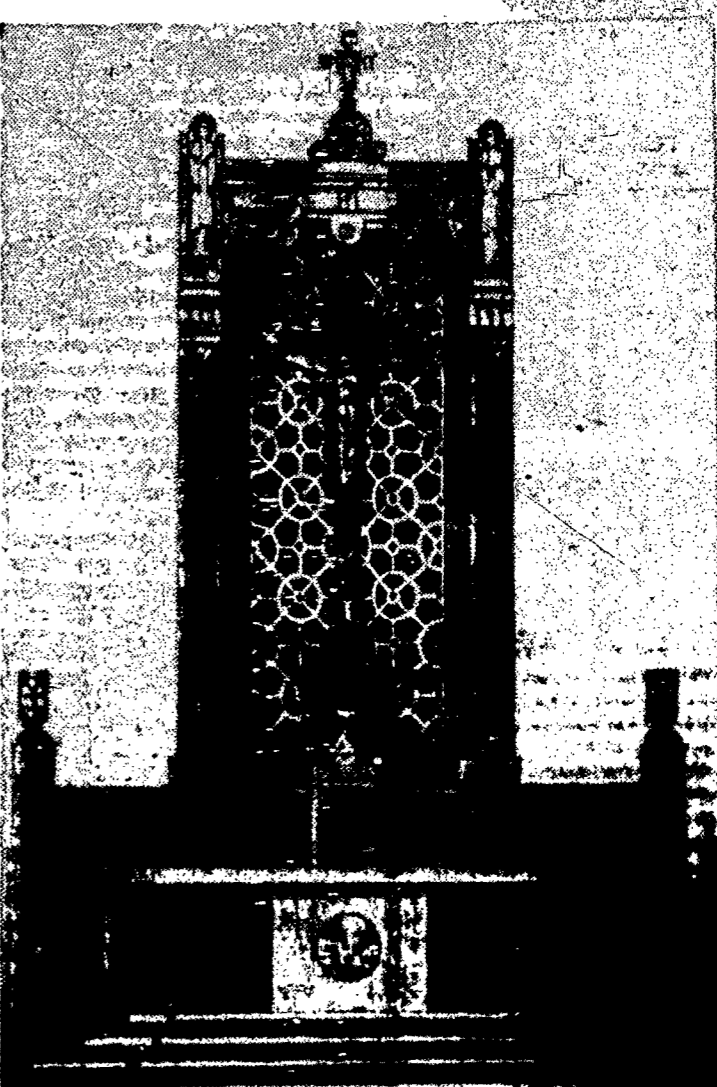
Work of dismantling the present altar and laying bases for the new ones, is now nearing completion.

According to the proposed design, the new altars will be characterized by elegance, dignity and simplicity. A description follows:

MAIN ALTAR: The three-step platform will be in Red Levanto Marble, and the paliotto in Poggio Imperiale marble with vertical veins. In the center will be the ancient liturgical symbol, the Pelican, in natural color Venetian mosaics against a gold mosaic background.

Columns supporting the mensa will be of Green Alpi marble with gold mosaic inlays. The top of the mensa will be of Botticino marble. Slender marble will house the tabernacle with its movable top of renaissance bronze. Red Alpi marble will be used for the retable in back of the mensa.

The reredos, tester and cross of the altar will be in Red Levanto marble with gold mosaic inlays. The top of the reredos will be of Botticino marble. Slender marble will house the tabernacle with its movable top of renaissance bronze. Red Alpi marble will be used for the retable in back of the mensa.



IN ST. ANN'S Church, Hornell, this beautiful main altar of red Levanto Marble will be erected in time for Christmas services and as a memorial to deceased friends and relatives of parishioners.

The crucifix will be executed in white oak, and the corpus of the crucifix in basswood. Back of the crucifix will be a panel pierced and finished in gold against a solid background of red.

The main altar will be 24 feet high; 16 feet, 3 inches wide and 11 feet six inches deep.

SIDE ALTARS: The platforms will be in Red Levanto marble with gold mosaic inlays. The top of the mensa will be of Botticino marble. Slender marble will house the tabernacle with its movable top of renaissance bronze. Red Alpi marble will be used for the retable in back of the mensa.

The reredos, tester and cross of the altar will be in Red Levanto marble with gold mosaic inlays. The top of the reredos will be of Botticino marble. Slender marble will house the tabernacle with its movable top of renaissance bronze. Red Alpi marble will be used for the retable in back of the mensa.

The reredos, tester and cross of the altar will be in Red Levanto marble with gold mosaic inlays. The top of the reredos will be of Botticino marble. Slender marble will house the tabernacle with its movable top of renaissance bronze. Red Alpi marble will be used for the retable in back of the mensa.

The reredos, tester and cross of the altar will be in Red Levanto marble with gold mosaic inlays. The top of the reredos will be of Botticino marble. Slender marble will house the tabernacle with its movable top of renaissance bronze. Red Alpi marble will be used for the retable in back of the mensa.

The reredos, tester and cross of the altar will be in Red Levanto marble with gold mosaic inlays. The top of the reredos will be of Botticino marble. Slender marble will house the tabernacle with its movable top of renaissance bronze. Red Alpi marble will be used for the retable in back of the mensa.

The reredos, tester and cross of the altar will be in Red Levanto marble with gold mosaic inlays. The top of the reredos will be of Botticino marble. Slender marble will house the tabernacle with its movable top of renaissance bronze. Red Alpi marble will be used for the retable in back of the mensa.

The reredos, tester and cross of the altar will be in Red Levanto marble with gold mosaic inlays. The top of the reredos will be of Botticino marble. Slender marble will house the tabernacle with its movable top of renaissance bronze. Red Alpi marble will be used for the retable in back of the mensa.

The reredos, tester and cross of the altar will be in Red Levanto marble with gold mosaic inlays. The top of the reredos will be of Botticino marble. Slender marble will house the tabernacle with its movable top of renaissance bronze. Red Alpi marble will be used for the retable in back of the mensa.

The reredos, tester and cross of the altar will be in Red Levanto marble with gold mosaic inlays. The top of the reredos will be of Botticino marble. Slender marble will house the tabernacle with its movable top of renaissance bronze. Red Alpi marble will be used for the retable in back of the mensa.

The reredos, tester and cross of the altar will be in Red Levanto marble with gold mosaic inlays. The top of the reredos will be of Botticino marble. Slender marble will house the tabernacle with its movable top of renaissance bronze. Red Alpi marble will be used for the retable in back of the mensa.

The reredos, tester and cross of the altar will be in Red Levanto marble with gold mosaic inlays. The top of the reredos will be of Botticino marble. Slender marble will house the tabernacle with its movable top of renaissance bronze. Red Alpi marble will be used for the retable in back of the mensa.

The reredos, tester and cross of the altar will be in Red Levanto marble with gold mosaic inlays. The top of the reredos will be of Botticino marble. Slender marble will house the tabernacle with its movable top of renaissance bronze. Red Alpi marble will be used for the retable in back of the mensa.

The reredos, tester and cross of the altar will be in Red Levanto marble with gold mosaic inlays. The top of the reredos will be of Botticino marble. Slender marble will house the tabernacle with its movable top of renaissance bronze. Red Alpi marble will be used for the retable in back of the mensa.

The reredos, tester and cross of the altar will be in Red Levanto marble with gold mosaic inlays. The top of the reredos will be of Botticino marble. Slender marble will house the tabernacle with its movable top of renaissance bronze. Red Alpi marble will be used for the retable in back of the mensa.

The reredos, tester and cross of the altar will be in Red Levanto marble with gold mosaic inlays. The top of the reredos will be of Botticino marble. Slender marble will house the tabernacle with its movable top of renaissance bronze. Red Alpi marble will be used for the retable in back of the mensa.

The reredos, tester and cross of the altar will be in Red Levanto marble with gold mosaic inlays. The top of the reredos will be of Botticino marble. Slender marble will house the tabernacle with its movable top of renaissance bronze. Red Alpi marble will be used for the retable in back of the mensa.

The reredos, tester and cross of the altar will be in Red Levanto marble with gold mosaic inlays. The top of the reredos will be of Botticino marble. Slender marble will house the tabernacle with its movable top of renaissance bronze. Red Alpi marble will be used for the retable in back of the mensa.

The reredos, tester and cross of the altar will be in Red Levanto marble with gold mosaic inlays. The top of the reredos will be of Botticino marble. Slender marble will house the tabernacle with its movable top of renaissance bronze. Red Alpi marble will be used for the retable in back of the mensa.

The reredos, tester and cross of the altar will be in Red Levanto marble with gold mosaic inlays. The top of the reredos will be of Botticino marble. Slender marble will house the tabernacle with its movable top of renaissance bronze. Red Alpi marble will be used for the retable in back of the mensa.

The reredos, tester and cross of the altar will be in Red Levanto marble with gold mosaic inlays. The top of the reredos will be of Botticino marble. Slender marble will house the tabernacle with its movable top of renaissance bronze. Red Alpi marble will be used for the retable in back of the mensa.

The reredos, tester and cross of the altar will be in Red Levanto marble with gold mosaic inlays. The top of the reredos will be of Botticino marble. Slender marble will house the tabernacle with its movable top of renaissance bronze. Red Alpi marble will be used for the retable in back of the mensa.

The reredos, tester and cross of the altar will be in Red Levanto marble with gold mosaic inlays. The top of the reredos will be of Botticino marble. Slender marble will house the tabernacle with its movable top of renaissance bronze. Red Alpi marble will be used for the retable in back of the mensa.

The reredos, tester and cross of the altar will be in Red Levanto marble with gold mosaic inlays. The top of the reredos will be of Botticino marble. Slender marble will house the tabernacle with its movable top of renaissance bronze. Red Alpi marble will be used for the retable in back of the mensa.

The reredos, tester and cross of the altar will be in Red Levanto marble with gold mosaic inlays. The top of the reredos will be of Botticino marble. Slender marble will house the tabernacle with its movable top of renaissance bronze. Red Alpi marble will be used for the retable in back of the mensa.

The reredos, tester and cross of the altar will be in Red Levanto marble with gold mosaic inlays. The top of the reredos will be of Botticino marble. Slender marble will house the tabernacle with its movable top of renaissance bronze. Red Alpi marble will be used for the retable in back of the mensa.

The reredos, tester and cross of the altar will be in Red Levanto marble with gold mosaic inlays. The top of the reredos will be of Botticino marble. Slender marble will house the tabernacle with its movable top of renaissance bronze. Red Alpi marble will be used for the retable in back of the mensa.

For Fine Groceries
MEATS — VEGETABLES
SHOP AT
SCHMIDT'S
FOOD MARKET
JAMES A. SCHMIDT & SONS,
PROP.
828 NORTH MAIN ST. DIAL 2-1370
Open Daily and Sundays 8 A.M. to 10 P.M.
• Free Delivery • Community Green Stamps Given
HERSHEY ICE CREAM
PINTS 27c — QUARTS 54c

THIS WEEK
SPECIAL
VAN CAMP'S
GRATED
TUNA
25¢

GIFT SUGGESTIONS
FROM THE FINEST STORE IN ELMIRA
J. P. & M. Sullivan's
SEWING CABINETS — RUGS
DROP LEAF TABLES — LAMPS
CEDAR CHESTS — APPLIANCES
LOUNGE CHAIRS — SMOKERS
KNEEHOLE DESKS — PORTER TABLES
RADIOS — HASSOCKS
SOFAS — TABLES
END TABLES — PICTURES
MIRRORS
Headquarters for
FINE CARPETS AND RUGS
for Over Half a Century
J. P. & M. Sullivan
115-117 EAST WATER STREET, ELMIRA, N. Y.
OTHER STORES IN CORNING AND WILLIAMSPORT

Forty Hours
Devotions of the Forty Hours will be held in the following churches of the Diocese of Rochester:
Sunday, Nov. 30 — Sacred Heart Cathedral, St. John the Evangelist, St. Mary, St. Patrick, Rochester; St. Mary, Auburn; SS. Peter and Paul, Elmira.

St. Patrick Pupils Told of First Aid
About 80 children of St. Patrick's school, Elmira, witnessed a demonstration on artificial respiration given by William Green, Chemung County life coordinator. Eighth grade pupils and members of Boy Scout Troop 37 were in the group.

Credit toward Boy Scout awards were given to several Scouts who took part in the instruction.

Several Sisters of Mercy were in attendance.

Speech — Speech is a sound-movie of what goes on in one's brain.

HERE'S ONE GOOD REASON
FOR JOINING OUR **Christmas Club**

Join one of these Club Classes
Deposit weekly amounts in 28 Weeks

\$.25	\$ 12.50
.50	25.00
1.00	50.00
2.00	100.00
3.00	150.00
5.00	250.00
10.00	500.00
20.00	1,000.00

Your weekly deposits provide cash for year-end bills—and for your Christmas shopping, too!

Elmira Bank & Trust Co.
Member Federal Deposit Insurance Corporation

Sheehan's for TOYS
In ELMIRA
We Give & Redesign
S & H Green Stamps

STORE HOURS
OPEN 9:30 A.M. — 5:30 P.M.
Monday — Saturday
Friday till 9 P.M.

famous Lionel trains
The Christmas thrill both Dad and Junior look forward to... realistic LIONEL train sets... complete in every detail. Every set has transformer and tracks... ready to run. Lay your Lionel Train Sets away tomorrow!

children's books for all ages 25¢ to \$1.50

Lay Away Toys Now!
Here's just a sampling from our complete toy department.

PLASTIC-BLUE WILLOW TREE SET, Fence and spools, too. Boxed	\$1.98
SUPER FIRE TRUCK, with electric motor, siren, extension ladders	\$1.64
MARK SPARKLING ARMY TANK, with sparkling gun, Machine-guns, 2000 paper	\$2.49
HEAVY DUTY EXPRESS TRUCK, Big trailer truck, detachable car, 2nd motor	\$3.98
AUTO SERVICE TRUCK, with tools, hoist jack	\$2.98
COMPLETE DRUM SET, Bass drum, traps, cymbal, triangle	\$3.75
PANTY SET, Hood, midsize, kitchen utensils	\$3.19
DOLL CRIB with plastic set. On wheels. Size 18" x 24" x 18"	\$4.98
DOLL WARDROBE SUITCASE, Complete with doll and her wardrobe	\$11.98
DOLL TRUNK with figured linings. Complete with dresses, plastic hangers	\$2.79
COWBOYS SUIT, shirt, vest, shirt, tie, chaps	\$3.95
CASH REGISTER, All chrome. Purch. Exp. figure appears, drawer opens	\$2.95

Manx wind-up mechanical trains
For Junior trainmen, shiny Manx mechanical sets, complete with track. Choose diesel or freight.
\$2.98 to \$4.79

electric phonograph Metal table-model Flare 11-type records	\$8.98
stock car Red plastic car with detachable hood. Friction motor.	98¢
doll bathinette Collapsible with plastic tank. Size 18" x 24" x 18".	\$2.69

dolls! dolls! dolls!
Little mothers will adore any of these dolls: Dolls that walk, talk... look real! Some all rubber... all beautifully dressed and cuddly.
98¢ TO \$12.49

SHEEHAN'S TOY DEPT.—Third Floor