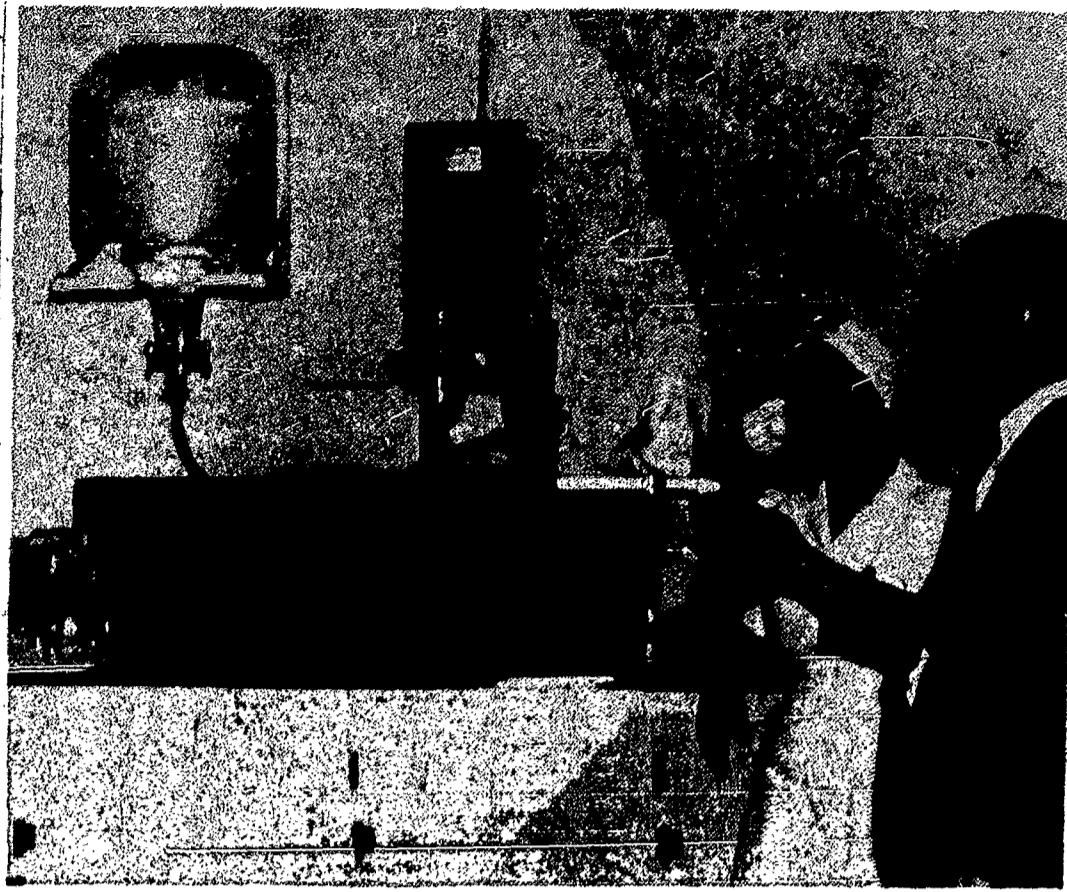


### Ready Garments For Europe Poor

Hammondport — Several in the last meeting. Religious devotions in the church preceded the meeting. Following devotions, the work period and business meeting. Mrs. Allan Shaw and Mrs. Andrew Vander Empten served refreshments in the social rooms. During the business session, Mrs. Girould accepted chairmanship of the annual Christmas Party for children of the parish.

### Hospital Adds Modern Equipment



Fenwal system installed in St. Joseph's Hospital, Elmira, is another step forward for up-to-date caring for patients. In the Fenwal room above, Miss Joan Dandrea, R.N., staff nurse in charge is being instructed by George J. Roy representing McCalister, Bicknell Company of Cambridge, Mass., manufacturers of Fenwal equipment.

### Fenwal System In Operation At Elmira Hospital

Another modern feature has been added to the facilities of St. Joseph's Hospital, Elmira, with the installation of the Fenwal system for the preparation of intravenous solutions. Recommended as a safe method of preparing and dispensing fluids for injection into the blood stream of patients, the Fenwal system operates as follows: The Pyrex flasks are first rinsed, then thoroughly washed by cleaning powder under pres-

sure, then rinsed with distilled water from a complete still which provides a constant supply from an adjoining room. The solutions, including dextrose (sugar), are made up in the next step.

THE PREPARED dextrose concentrate, made by Herbert E. Atwater, hospital pharmacist, is

purified by running through an extremely fine glass filter. While the purified concentrate is being run into a burette, distilled water is run into a larger burette, then the two are mixed automatically by the operation of an electric pressure pump. The processed flasks receive the mixed solution.

### A Great Christmas JEWELRY STORE

Lay Away Gifts Now  
See the Very Large Selection of Fine Diamonds — watches — jewelry — Silverware.  
Knights of Columbus Rings  
GLORIOUS DIAMONDS  
Superb Flawless Diamonds Priced in Equitable Settings . . . Marked for Greatest Value

\$265  
WATCHES  
HAMILTON  
ELGIN  
JULOVA  
WALTHAM  
GALVIN  
LONGINES  
GOTHAM  
OMEGA

\$35 to \$150  
\$950  
up

\$37.50  
Fed. Tax

Divided Payment Accounts Invited  
**SCHREIBMAN'S**  
Jewelers Est. 1893 Silversmiths  
214 East Water St.

### Bishop Dedicates St. Anthony's

(Continued from Page 7) be preached a genuine patriotism and love of our country. "They can rest assured that there will never be built up in the class rooms of this school

any walls of separation between God and our Country, even though such a wall of separation may be the dream of some of our thinkers in high places. "THE FLAG of this Country and the Cross of Christ will always stand together and there will be developed in these class rooms a patriotism based not upon the acceptance of the particular part in power at the time, but based upon human conscience, based upon the Commandment of Christ to Whom this school will be dedicated: 'Render to Caesar the things that are Caesar's and to God the things that are God's.'"

"What will be the place of this church in the community," the Bishop asked. "Certainly the community itself in its generosity and generous acceptance of this institution as an element of peace and happiness, contentment, fraternal charity in this community, can expect that from out of this institution there will come a great blessing of God."

The Bishop presided at the throne during the Solemn High Mass celebrated by Father Simonetti. Assisting the Bishop were Assistant Priest, the Rt. Rev. Msgr. William J. Brien, V.F., Deacons of Honor, the Rev. Arthur C. Smith and the Rev. Thomas J. Toole, Master of Ceremonies at the Throne, the Rev. Dr. John E. Mann.

Assisting Father Simonetti were: Deacon, the Rev. Charles J. Azzi, Subdeacon, the Rev. Bernard C. Hanna, First Master of Ceremonies, the Rev. Ignatius St. George, Second Master, the Rev. John V. Loughlin.

The Rev. Benedict Ehmann presided at the organ and the Rev. Leo G. Schwab was commentator on Station WFLM as the ceremonies were broadcast.

MUSIC for the Mass was furnished by the newly formed Boys' Choir of St. Anthony's directed by Sister Edw. in Teresa.

The Bishop was escorted from the rectory by altar boys, color guards of St. Anthony's Post No. 1144, Catholic War Veterans and honor guards of the Knights of Columbus, Elmira Council and Fourth Degree Assembly.

### Convert Class Slated Dec. 19

"Don't Go To Heaven Alone" is the slogan for another Convert Class to begin Sunday, Dec. 19 at 6:45 p.m. in S.S. Peter and Paul Rectory, Elmira, according to the Chinese parish publication. The publication states: "May we urge everyone to canvass non-Catholic friends now. Sometimes the mere announcement of such a class is all they need to bring them to instructions."

Prominent at the ceremonies was the Rt. Rev. Msgr. Adolph L. Gabbani, pastor of St. Francis of Assisi Church, Auburn who was founder of St. Anthony's, Elmira. Some of the original parishioners who greeted him were Joseph Crull, James Cleri and James DeLauro.

The church and school were visited by nearly 10,000 persons Sunday who came to inspect the rebuilt structure which rose in much less than two years after the fire.

A souvenir booklet was issued to commemorate "St. Anthony's Indestructible" symbol of material achievement over difficulties and of the indomitable will of Elmiraans working for the same cause.

**GEROULD'S PHARMACY**  
Will DELIVER Your DRUGS PRESCRIPTIONS And **DOLLY MADISON ICE CREAM**  
Promptly ..Dial 6946..

### SPECIAL SALE OF FINE FUR COATS AND CLOTH COATS



Person Lamb, Persian Fox, Seal, Brown and Gray Squirrels, Chinese Kid . . . And Other Furs

MUSKRATS OF VERY FINE QUALITY

AT \$345.00 AND TAX INCLUDED \$398.00

FUR SCARF SALE . . . Just in time for Christmas

Fine Siberian Squirrels, Kolinsky, Mink and Martens . . . so popular in the 4 animal clusters.

See these exceptional \$56.00 • \$85.00 • \$148.00 and \$185.00 values.

### SALE OF PLAIN and FUR TRIMMED CLOTH COATS

LARGE STOCK TO CHOOSE FROM  
Colors: Black, Gray, Green and Brown

Swing Back and Hooded Models in Luxurious, fine Fur Collared Coats in Tweeds, Checks and plain colors. All Fitted and Box Models. The season's choicest cloths Sizes 10 to 18 and 36 fine, warm coats. to 46. Special prices

\$45.00 and \$59.00 \$59.00 and \$90.00

### YEAR AROUND COATS

Zip-in linings in Gabardine and Covers. Colors: Black, Gray, Green and Wine.

SPECIAL AT: \$48.00 • \$55.00 and \$59.00

OPEN FRIDAY EVENINGS STORE HOURS: 10 A. M. TO 5:15

**PERSONIUS & MALONE**  
N. MAIN & MARKET STS., ELMIRA, N.Y.

Let's Make This Christmas A RELIGIOUS One!

Wrap a blessing as well as value into your gifts this Christmas. Remember those on the top of your gift list with a beautiful rosary, a medal and chain or those of their favorite saint or a fine prayer book they'll be proud to carry. Time is getting short so come in soon and select your gifts from our grand assortment.

**RELIGIOUS ART SHOP**  
Mary Louise McManus  
808 GROVE STREET ELMIRA

**TOM'S LIQUOR STORE**  
KAIN & McCANN, Props.  
Choice Liquors  
Wines — Cordials  
FREE PARKING SPACE  
Cor. Penna and Maple Aves.  
DEAL 2-1000

**Hubert S. Bennett**  
Manufacturing and Dispensing Optician  
Prescriptions Filled and Glasses Repaired  
112 L. CRAY ST  
Dial 5720 Elmira

### An Ideal Christmas Gift For Her

All the casual comfort and charm of your favorite moccasin, translated into a handsome indoor slipper of 100% pure wool Velveteen, exclusive with Daniel Green!

Come in and see it!

The Pow-Wow — Sand, Royal Blue, Black and Indian Red.

**Daniel Green COMFY SLIPPERS**  
They're beautifully comfortable

Daniel Green uses Shiner's famous rayon tulle and the American Felt Company's fast wool felt.

**Gosper-Kelly**  
160 N. MAIN ST. Open Friday Nights

**SELF SERVICE**  
The Modern Way to Shop -  
**5th STREET MARKET**  
Dial 26840 373-75 W. FIFTH ST.—AT DAVIS ST.

BUY OF THE WEEK!  
MUSSELMAN'S APPLE SAUCE  
No. 2 Can 2 cans 25c

WE SELL ONLY THE BEST GRADE MEATS

<b>POULTRY</b>	<b>CHUCK ROAST BEEF</b> 65c Lb. Lean - Meaty, Flavorful Arpeako De-Luxe Steer
<b>ARPEAKO GRADE "A" ROASTERS</b> AV. 4 1/2, L.B.S. 56c lb.	<b>GROUND BEEF (Fresh)</b> 55c Lb.
<b>FROSTED FILLET PERCH</b> . . 35c	<b>GENESSEE BACON SLICED</b> 36c 1/2 Lb.
<b>FRESH OYSTERS</b> . . 79c	<b>ARPEAKO PIPPIN HAM</b> BONELESS ROLLED 76c Lb.
<b>Country Fresh DAIRY GOODS</b>	<b>ARPEAKO DE LUXE POLISH SAUSAGE</b> 65c Lb.
<b>BORDEN'S 3 OZ. PIPPIN ROLL</b> . . . 21c	<b>ARMOUR STAR PICNICS</b> 50c Lb.
<b>LARGE GRADE "A" DOZ. EGGS</b> . . . . 83c	<b>ARPEAKO RIB VEAL CHOPS</b> 75c Lb.
<b>NUMAID OLEO</b> . . . . 35c	<b>ARPEAKO CHOICE VEAL STEAK</b> 87c Lb.
<b>PHILADELPHIA PKG. CREAM CHEESE</b> . . 18c	<b>ARPEAKO BEST BABY LINKS SAUSAGE</b> 69c Lb.
<b>ELCOR 12 OZ. PKG. Cottage Cheese</b> . . 19c	<b>ARPEAKO BOSTON BUTTS</b> 49c Lb.
<b>SNAPPY Store Cheese</b> . . . 69c	

THE BEST IN REFRIGERATED FRUITS and VEGETABLES

<b>DULANY'S Frozen Foods</b>	<b>BEECH-NUT BABY FOOD</b>	<b>CUT-RATE WAX PAPER</b> . . . . 23c
<b>WAX BEANS</b> . . . . 23c	<b>Strained, 3 for</b> . . 28c	<b>SPRY, 3 lb. can</b> . . . 1.13
<b>SQUASH</b> . . . . 23c	<b>Chopped, 2 for</b> . . 29c	<b>GLOROX, qt.</b> . . . . 17c
<b>GARDEN PEAS</b> . . . 25c	<b>HEINZ 2 CANS BAKED BEANS</b> . . 35c	1/2 gal. . . . 31c
<b>SPINACH</b> . . . 23c	<b>HUNT'S CAN TOMATO SAUCE</b> . . 7c	<b>KIRKMAN 2 CANS CLEANSER</b> . . . . 15c
<b>GREEN BEANS</b> . . . 19c	<b>WHITE ROSE 2 FOR Spinach, 7 3/4 oz.</b> . 21c	<b>D U Z</b> . . . . . 33c
<b>SWANSON FRYING CHICKENS</b> READY FOR THE PAN	<b>NESTLE'S COCOA, 1/2 lb. can</b> . 27c	<b>O X Y D O L</b> . . . . 33c
<b>NABISCO PREMIUM CRACKERS, lb. box</b> 25c	<b>FAWN 3 QT. BOTS. BEVERAGES</b> . . . . 25c	<b>D R E F T</b> . . . . 29c
<b>LIPTON TEA BAGS, 100</b> . . 98c	<b>PLUS DEPOSIT 12 oz. Bot. Case</b> . . 65c	<b>IVORY, 1 lb. bar</b> . . 17c
<b>MUSSELMAN'S LGE. APPLE BUTTER</b> . . 18c	<b>PLUS DEPOSIT SUNSHINE CHEEZ-IT</b> . . . . 15c	<b>JOHNSON'S GLO-COAT, qt.</b> . . 98c
		<b>BREEZE, 2 lg. pkgs.</b> 38c
		<b>MOP STICKS</b> . . . 23c

Pat pas  
Ch Be Ro  
Ge of th prep mas, chap pital, guesi Chr St S event buildi  
FA his w tal a for th value prepa the bl  
Rt. Padde Rev. J briefly organ  
The str Mrs. gave a introd lan, w Jan e Ligh was tl Claus. Dalton Mrs. etal ch  
Sod. Fr.  
Aubun ing of Sodaltit cum H day. De Leonard burg, or to make mous sh tima in give an erbing  
The si beautiful has been thulasm it.  
The le and terr interestec  
St. Alpl Conduc  
Auburn sored by be held Thursday place for served to  
SAN "Gir  
We have Slippers, comfort of  
NO SHO 55 Genes