

\$100 to \$2,500

When you find it necessary to borrow money for taxes or other emergency expenses, apply for a low-cost Lincoln-Alliance PERSONAL LOAN. You may borrow from \$100 to \$2,500, if you meet our simple, business-like requirements.

LINCOLN-ALLIANCE BANK AND TRUST COMPANY

Member Federal Reserve System Member F. D. I. C.

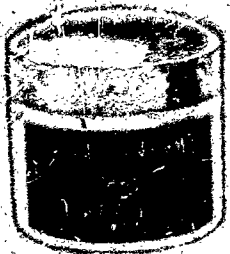
PAIN'S

DOROTHY GRAY

THROAT CREAM

HALF PRICE

Reg. \$2 Size \$1 PER 1/2 OZ. TUBE



For a more pliant, smoother throat, help yourself to a jar of famous Dorothy Gray Throat Cream. Its rich, emollient oils help overcome crepey dryness, coax throat skin to be as bright and pretty as your face. Use regularly to help keep your neck-line luscious smooth.

THE PAINE DRUG CO.

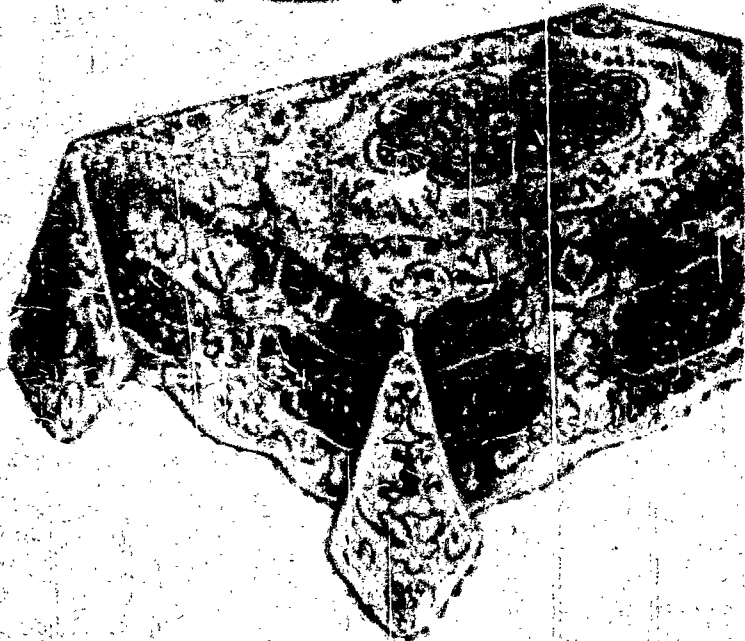
Apothecaries—Established 1820

24-26 EAST MAIN STREET

PHINEAS MAIN 1820

TELEPHONE OR MAIL ORDERS SENT CHARGE OR C. O. D. DELIVERIES POSTPAID ANYWHERE IN NEW YORK STATE

Sibley, Lindsay & Co. Co.



Regularly \$4.99! Fine Filet Lace Dinner Cloths 3.99

And little it is, for cloths of this quality! Intricate cutwork design that will show up beautifully against the dark wood of your table. Just a limited quantity of these cloths at this modest price. Approx. 70x86". LISTEN, BEAR AIDUS, 119 M. MAIN FLOOR

For House Cleaning! Cheesecloth

5 yd. pkg. 29c

Much less than you pay ordinarily for fine, soft cheesecloth, so indispensable to spring house cleaning.

10 yd. pkg.



3801 Grand Ave. Des Moines, Iowa

Family Inventory

Whatever the practical side of the farm inventory shows this year, the inventory of every truly Christian farm family will have a longer list of those intangibles which make rural life so vital. One item which will loom large is an appreciable increase in family solidarity, due to the war emergency. We often hear that family life in the country is more easily maintained than it is in the city. While this is mostly true, country parents also have their difficulties in keeping their "growing-up" family the ideally complete and happy unit they would have it be. The pull of outside influences cannot always be ignored and sometimes demands recognition from the parents.

This year much of the worry on that score has been eliminated with tires and gas among the "untouchables," and a three-mile hike to town in snow and cold enough to quail even the toughest "high-schooler." Quiet evenings together, the kind associated with homes in the country, are once again the accepted thing, and the farm household is more than ever a citadel of security and peace.

STRANGERS ABSENT

In many homes for the first time the family circle is truly that without the presence of a stranger in it. Thousands of farms which have always had hired hands are this year carrying on without them. When the peepers in the marsh sound spring's definite arrival, there will be no Pete or Sam to take up his spade and continue the good old tradition of the American hired man. Instead of a pitchfork over his shoulder, he has a rifle there, and instead of marching jauntily down to the south forty to eliminate the Joe-Eye-Weed, he will be bent on missions rather than peaceable.

But the nation must be fed as well as all the hungry millions outside who depend upon our government's assurance that they will not go hungry. Every extra "milk" which each of our six million farms can send to market will help swell the "milk" of surpluses which will enable our country to keep faith with the world.

When families are learning anew the true value and worth of each other in their common enterprises, minus the aid of paid help, the youngsters tackle chores unhesitatingly there is no one else to do them. It becomes a normal procedure for Jim to get up and help with the milking and for Kathy to tend the hens. It's for the family now; it's for us, for our farm, for our country.

SUNDAY IMPORTANT

It isn't altogether easy, this taking on of extra work. The whole family feels the burden. No extra-curricular activities for the boys this year, and few for the girls. Sunday assumes an importance it has not had for years. It is a day to look forward to. Our boys and girls must have their share of wholesome recreation as well as our soldiers. What better time for a straw pile or skating party than after Sunday Mass?

Yes, an inventory of rural life will show more changes than one taken in the cities and just as many sacrifices and deprivations. But as there can be no giving that is not part gain, the Catholic principles of forgetfulness of self will bring courage and peace to families and to nations, and the wise parent will use these opportunities to bring the truth of our religion to their children's understanding. So while farm families this year may be far from further ways of life, they will be nearer to that ideal that Other Rural Family, which has remained a shining symbol and example throughout countless years—the Holy Family of Bethlehem.

Mrs. C. C. Fitzgerald

Prayer for Peace

O God, Who hast dominion over all realms and kings, Who by striking heaviest and by pardoning sweetest, stretch out over us Thy mercy so that by Thy power we may enjoy peace and tranquility and use them for our healing and amendment. Through our Lord Jesus Christ—From the Mass in Time of War.

Wonderfully Flattering! Lovely GRAESER Scarfs

In Any Number of Styles KOLINSKY MINK—SABLE—BAUM MARTEN—SILVER FOX

Fur Jacket

or Choose a Glamorous Fur Jacket From Our Magnificent Showing



State Open Monday Evening

Wm. V. GRAESER Co.

Rochester's Largest Exclusive Manufacturing Factory

38-40-42 Clinton Ave. North

Catholic Near East Welfare Association

A Lenten Suggestion

After the Mass, the popular devotion of Lent is the Way of the Cross. Make the Stations every day in Lent. You can also make this devotion possible for others. Place the Stations of the Cross in a mission chapel by your offering of Ten Dollars.

LIVING EXAMPLES OF CHRIST'S CHARITY

For many years the Daughters of Charity have labored in the principal cities and villages of Persia. They are well named. Day in and day out, these thirty-one nuns perform the corporal and spiritual works of mercy, which comprise the charity of their Spouse, Jesus Christ. They conduct schools, dispensaries for the poor, centers of training in handicraft and household tasks, and in the visits made to the sick and the poor, they carry on the fourteen works of mercy. But surprisingly enough, those they serve are for the most part Moslems, and they are winning many to Christ and His Church.

Now, the Mother Superior is a truly apostolic spirit of zeal and sacrifice, writes:

"We must appeal to you for aid. We are absolutely without means of support, except for the little we can beg. I am very much concerned about our two little orphans. In them we care for thirty-five dear children deprived of home and the affection of parents. Sixty Dollars will maintain an orphan for a whole year or Five Dollars for a month. Won't you please find sponsors for me?"

The Daughters of Charity deserve your help. They are giving their lives for Christ and souls. Mother Superior's letter is our appeal. Sponsor an orphan for a year, or at least a month. Surely you will respond and merit God's copious blessing upon you and yours.

MONTH OF ST. JOSEPH

The month of March is dedicated to St. Joseph, the Foster Father of Christ, and Guardian of Mary. St. Joseph was a native of the Holy Land, part of our mission territory. He must be interested in our missions in a special way. We would be pleased to receive an offering of Fifteen Dollars to purchase a large-sized statue of St. Joseph to be placed in one of our mission chapels or schools.

CATECHISM BOOKS

Without catechisms our priests, sisters and catechists are handicapped. Repeatedly we are asked to supply catechism texts. Twenty Dollars will buy one hundred large catechism books. We are in need of thousands. Will you donate fifty, a hundred or more?

USED AT MASS

Two candles must burn on the Altar when Mass is offered. A Crucifix must be above the Altar. You can donate a pair of candlesticks and crucifix for Seventeen Dollars. To supply candles for all devotions of the year, add Eight Dollars more.

KINDS OF MEMBERSHIP

Associate Membership, a year, \$1 Family Membership, a year, \$5 Perpetual Membership, \$25 Family Perpetual Membership, \$100 Family Membership, includes Mother, Father, Brothers and Sisters, or Husband, Wife and Children. The deceased may be enrolled in all classes of membership.

THE MONSTRANCE

During Lent our missionaries will conduct many devotions for the people. Often these devotions will end with the blessing of our Lord in the Blessed Sacrament. The sacred vessel used at Benediction is called the Monstrance. Many of our chapels are without one. You can donate one by a gift of Twenty-two Dollars.

HOLY FAMILY PICTURE

The picture of the Holy Family is very popular in the Near East. That is understandable, for it was in the Near East that our Lord was born, and where the Blessed Virgin and St. Joseph lived and died. We should like to have this picture in our mission schools. Five Dollars will buy one in the Near East.

YOUR WILL

When making your will remember God's Church. Leave something for the missionaries to carry out the command of Christ: "Go, teach all nations." Everything you have comes from God. Show your gratitude by placing in your will the name of the Catholic Near East Welfare Association, which works for God and souls.

NEED OF THE TIMES

Christian education is the need of the day. For a peaceful world, people must know God and live according to God's Law. That is the objective of Catholic schools. You can give a Christian education to a child in a mission school for Ten Dollars a year. You will thus help correct the evil of the day—godless education.

Send all communications to

Catholic Near East Welfare Association

400 Lexington Ave. at 46th St.

New York, N. Y.