

BLESSING GIVEN / NEW HOME FOR NUNS AT O. L. P. H.

Dedication of New Edifice Built by Outstanding Craftsmen

S. A. Spencer

145 Spring Street

Kenner
Incinerator
Medicine
Cabinets
Fire-Doors

**GOODSTONE
MFG. CO., Inc.**

Masons and
Builders' Supplies

We Specialize in Best Stone

Glenwood 4186
470 Hollenbeck St.
ROCHESTER, N. Y.

CYRIL J. STATT

Successor to
Gerretner & Statt

TILE, MARBLE and
SLATE CONTRACTORS

Phone Stone 1913
44 Mt. Hope Avenue
ROCHESTER, N. Y.

Rappi & Hoening Co.

CEMENT BLOCKS
CINDER BLOCKS
MASON SUPPLIES
SAND & GRAVEL

Office & Yard
Phone Stone 218

1441 Ridge Road East

Ceremony Dedicates New Structure Well Designed and Executed

In a private ceremony at early Mass Wednesday morning, His Excellency the Most Rev. James E. Keenan, D.D., Bishop of Rochester, presided at the ceremony of blessing of the new residence for the Sisters of St. Joseph who teach at Our Lady of Perpetual Help School, Joseph Ave.

The Holy Mass was offered in the beautiful new chapel on the first floor of the newly completed convent building.

The Holy Sacrifice was celebrated by the Rev. Francis J. Hoefen, pastor of Our Lady of Perpetual Help Church, and his assistant Father, the Rev. William D. Tobin, F.S.C.

Participating in the ceremony with the Bishop were the Rev. Lawrence B. Casey, vice chancellor; the Rev. Francis J. Hoefen, pastor of Our Lady of Perpetual Help Church, and his assistant Father, the Rev. William D. Tobin, F.S.C.

The Rev. Hoefen, who directed the construction of the new Sisters' residence, is being widely congratulated for its completeness in every detail.

The new building is of modern classic design. It harmonizes in every way possible with the stately church edifice which rises adjoining. It is a newly equipped throughout and has the latest conveniences for the Sisters' use.

The convent is constructed of veneer brick, trimmed with cast stone and has a red asphalt shingle roof. All side walls and the entire roof are insulated. The building is heated from the church by underground tunnel running between the church and the convent.

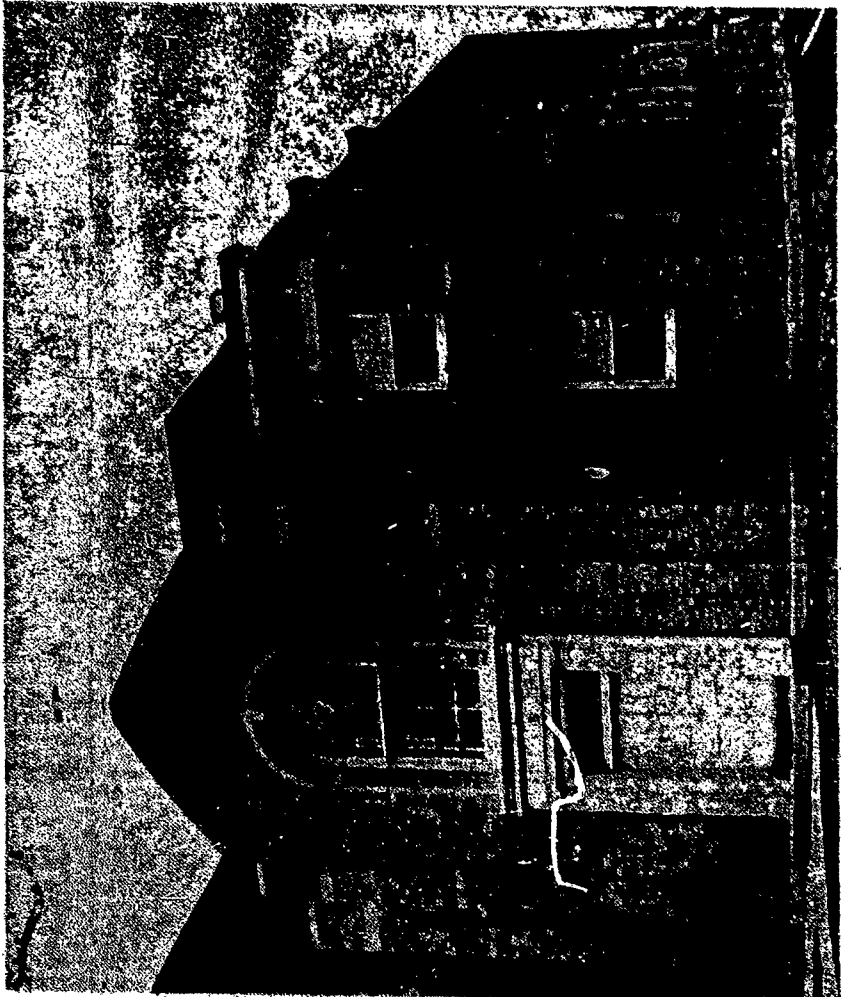
The large gold glass surround- ing the roof over the front entrance calls attention of passersby to the fact that this is a building in which reside holy women devoted to the Cross of Christ.

Architect for the new building was William L. Phillips with A. Charles Fleck, associate architect.

See Photo Page 1

Skilled craftsmen and builders completed the building which has been highly acclaimed by those who have inspected it for the first time.

On the first floor are found two bronze



Devotion-Inspiring Chapel Is Feature of New Convent

Furthering devotion in the new residence of the Sisters of St. Joseph of Our Lady of Perpetual Help School, now occupied on Joseph Avenue adjoining the church, is the beautiful little chapel, and its appointments especially designed for this lighted by an indirect lighting system.

A striking oil painting of Christ sides being an accomplished artist of portraiture, landscape and stained glass work. Mr. Nincheri, who painted the Christ the King in oil painting at his studio in Montreal, received his training at the Academy of Fine Arts, Florence, Italy.

The colorful oil painting, in size proportioned to harmonize with the other appointments in the chapel, is spotlighted with colored lens which give a varying effect that arrests attention and is conducive to meditation and devotion.

The boy leashed that business, he told an interviewer in the Post Standard of Syracuse in which/di- Standard of Syracuse in which/di- Standard of Syracuse in which/di-

Standard of Syracuse in which/di- Standard of Syracuse in which/di- Standard of Syracuse in which/di-

Outstanding construction and equipment firms cooperated in the building of the convent.

They are: Fred B. Yeager, general mason; Warren Weber and Company, specialties and millwork; William J. Weiser and Sons, pews and other chapel equipment; A. J. Nichols, Inc., heating; Egan Herber and Son, carpentry; Joseph L. Weckesser, brick; Dager Electric Company, electrician; Kovalsky-Carr Electric Co., electrical fixtures; Harold Eyer, Spoor; F. L. Reighley, steel.

Charles A. Tucker, stained glass windows, oil painting and other altar appointments; Seebach-Klein, Inc., painter; Barr and Creel, Inc., plumbing; Summit Stone and Co., plumbing fixtures; General Iron Works, Communication Radi; S. A. Spencer, Incinerator; Goodstone Manufacturing Co., Inc., John J. Seble Lumber Co., floors; Keystone Building Supply Co., cement; Gerretner and Statt, (Cyril J. Statt), tile and marble; Rappi and Hoening.

The Heister Lumber Company installed the interior trim which has been highly commended along with the other material and equipment.

Siddons furnished the roofing and E. W. Edwards, drapes, shades and carpets.

EXTERIOR
FACE BRICK

**JOSEPH L.
WECKESSER**

384 Aberdeen Street
ROCHESTER, N. Y.

FACE BRICK
COMMON BRICK
HOLLOW TILE

HAROLD, G. EYER

HARDWOOD FLOORS

Laid and Finished

1691 South Ave. Monroe 4174R

ROCHESTER, N. Y.

For Works of Art and Liturgically Correct
Altar Appointments

The Reverend Clergy Know
CHARLES A. TUCKER
To be a Recognized Expert

TUCKER'S

RELIGIOUS GIFT STUDIO
74 EAST AVENUE

F. L. HEUGHES

CONSTRUCTION STEEL

1029 Lyell Ave.

GLENWOOD 590

Barr & Creelman

PLUMBING—HEATING
SUPPLIES

242 Main St. W.

PHONE MAIN 6465

ELECTRICAL FIXTURES

Furnished by

KOVALSKY-CARR ELECTRIC CO., Inc.

JOBBERS and DISTRIBUTORS
ELECTRICAL SUPPLIES and FIXTURES

178 Clinton Ave. No.

Stone 1670

Installation by