

# Campaigners Set To Open St. Mary's Hospital Drive

The Influential Newspaper

of the Rochester Diocese

EDITION FOR ROCHESTER

# Catholic Courier

LOCAL NEWS EDITION

VOLUME XIV Number 2

5 Cents a Copy

THURSDAY, JANUARY 15, 1942

\$2.50 per Year

Over 500000 Printed

## Throng Turn Out To Mark Two Feasts

In two great demonstrations of Catholic faith, the Feast of the Holy Family and the Feast of the Holy Name were appropriately

(Photos on Page 7)

celebrated last Sunday throughout the diocese.

Reports coming in to the Chancery reveal that the Family Communion and Breakfast invitation of His Excellency, Bishop Kearney, received generous response. Churches were crowded at the early Masses as families as a unit approached the altar rail. Here and there a service man in uniform was observed going to Holy Communion with their families.

Pray for Service Men  
Responding to the Bishop's suggestion that "the prayers of a united people will ascend to God's throne in humble supplication that the feast of the Holy Family next year will find them (the boys in service) all united again at the altar of God," the families made that intention.

Downtown "restaurants were crowded as the families took "mother" out for a Communion Breakfast as suggested by the Bishop.

"Candle Light Ceremonies" attended by large turn-outs of Catholic men marked the Holy Name Feast at the services sponsored by the Rochester Diocesan Holy Name Union Sunday afternoon.

These ceremonies were held at Holy Rosary Church, Blessed Sacrament Church, St. Michael's Church and St. Augustine's Church in Rochester and at St. Peter and Paul's Church, Elmira.

Identical services were carried out, including singing of the Holy Name Hymn and Hymn to the Holy Ghost, sermon recitation of the Holy Name Society pledge and Benediction of the Most Blessed Sacrament.

Silent Prayer  
As the men stood in the darkened churches holding aloft the lighted candles, an impressive moment came when they stood in one minute of silent prayer for all the men in the armed forces.

At each district church, a stirring and eloquent sermon was preached by the following: Holy Rosary Church, the Rt. Rev. Msgr. Charles F. Shay; Blessed Sacrament Church, the Rev. Dr. Maynard Connell; St. Michael's Church, the Rev. Gerald T. Brennan, and St. Augustine's Church, the Rev. L. Emmott Davis, and the Rev. Thom-

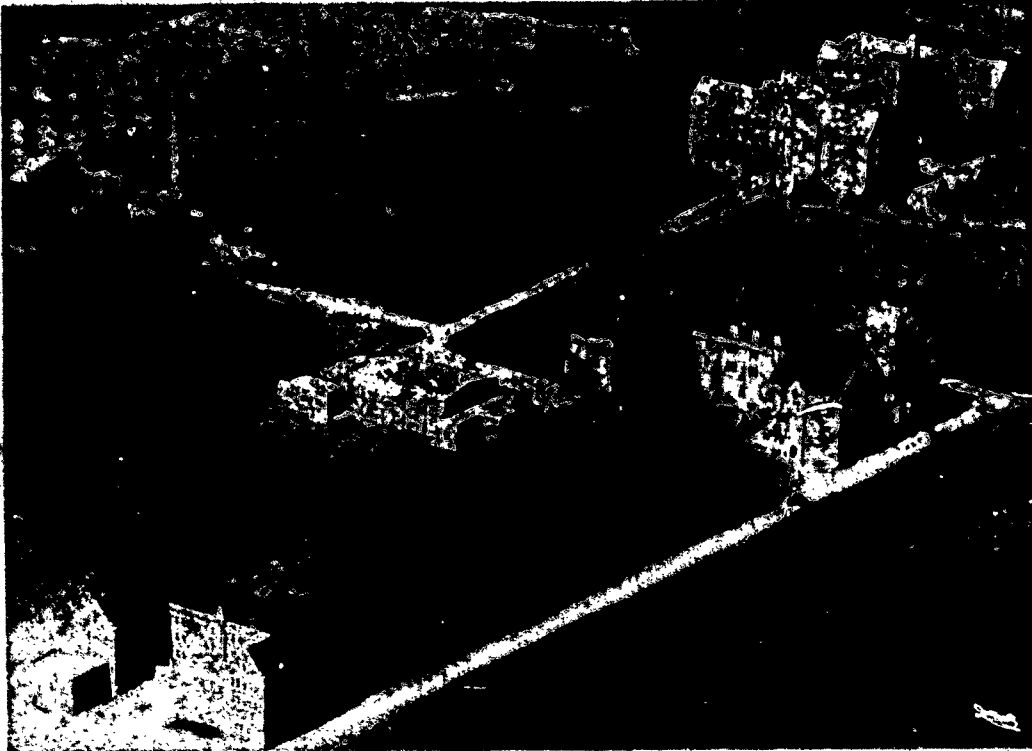
(Continued on Page 12)

## Rutherford Dies In California

SAN DIEGO, Calif.—(NC)—Joseph Franklin Rutherford, self-styled "Judge," and founder and leader of the Jehovah's Witnesses, who achieved world-wide notoriety for their radio and literary assaults upon the Catholic Church, is dead at his estate here.

The 72-year-old Rutherford lay unburied and thus even in death continued involvement with the law which characterized a large part of his personal history and that of the Jehovah's Witnesses movement. His last wish to be buried on the estate was blocked by the refusal of the civil authorities to permit this because the estate is not a legally zoned cemetery.

## Complete College Plant From The Air



A 'Greater Nazareth'—modernly constructed and equipped college buildings above located at Pittsford await Catholic young women who are seeking the efficient secular and religious training offered by the Sisters of St. Joseph conducting Nazareth College.

## Nazareth College Opens On Jan. 19

Students of Nazareth College will commence their college life Monday, Jan. 19 on an entirely new campus. This new spacious, park-like campus, located on East Avenue, Pittsford, will consist of an administration and class room building, a separate gym and auditorium, a separate residential students' home, all of English gothic architecture.

Also on the campus is a cooperative dormitory which will house about fifteen students. The Motherhouse of the Sisters of St. Joseph is to be found on the west end of the campus.

PIAN PLAY HOUSE  
Members of the Undergraduate Association have had plans drawn for a "play house" where students may gather between classes. Work will begin on this in the Spring.

The resident students' home is equipped with single and double rooms with adjoining baths, and suites of connecting single rooms. On each floor of the three-story brick building is a lounge with a connecting kitchen where the boarders will spend their leisure hours. On the main floor, there are the boarders' lounge, dining room, and social room.

The administration building will house the offices and class rooms. There will be more than fifty class rooms—chemistry, biology and physics laboratories, plus typing and dictation rooms, and office practice laboratories. There is also an eatery where Mass will be offered daily. A speech theater has also been provided.

AUDITORIUM FOR 800  
The auditorium will accommodate about eight hundred. It is equipped with a Douglas maple floor, and the stage has been furnished with all the needs of collegiate plays. Under the auditorium there is a cafeteria which will accommodate the entire student body. To the west of the cafeteria showers and lockers for the gymnasium have been provided.

More than one-half mile of concrete tunnel connects all of the buildings. These tunnels, eight feet by six feet, will eliminate the necessity of going outdoors in inclement weather to pass from building to building. The administration building is also connected with the auditorium by a gothic cloister.

The college was founded in 1924 by the Sisters of St. Joseph of the Rochester Diocese, and classes were first held in a large residence called the Glass House in Lake Avenue adjacent to Nazareth Academy. Three hundred and twenty-five young women. In 1926 the college moved to Augustine Street. Ground for the new East Avenue buildings was broken on July 5, 1940.

The college now consists of about 300 students, seventy of whom are boarders. The faculty at present numbers eleven lay-

(Continued on Page 8)

## Canada Clergy Get Gasoline Priority

OTTAWA.—Under the gasoline rationing which is to become effective this month throughout Canada, it is planned to give special priority to the clergy and their families so that their ministrations, especially in rural and war-time areas, will not be hampered.

Just the thing for those who say is one of AUNT JENNIE'S... You can save your pocket book by getting... AUNT JENNIE'S BAKE SHOP, 518 Monroe Ave.—Adv.

## Materialism's Threat Draws Warning

CHICAGO (NC) A warning against the forces of materialism active in the United States was sounded by the Most Rev. Samuel A. Stritch, Archbishop of Chicago. In an address broadcast over the Mutual Broadcasting System Sunday. The Archbishop spoke at a Communion breakfast in the parish hall of the Church of the Visitation here, and his voice was carried to other Communion breakfasts of Holy Name men held throughout the Archdiocese of Chicago.

Services incident to Holy Name

(Continued on Page 3)

## New Hospital Bed Need Acute, Workers Told

The need for new hospital beds in Rochester, already acute, will unquestionably increase as the years go on, Dr. Leo Simpson, president of the Medical Staff of St. Mary's Hos-

pital, today told a group of campaigners enlisted in the \$275,000 drive for a new St. Mary's Hospital, to be held Jan. 22 to Feb. 2.

The new hospital, now being erected in Genesee St., south of the present structure, will have 375 beds in place of the present 257 beds. These additional bed facilities are urgently needed now, Dr. Simpson said; Rochester now has only 3.7 beds, for the care of the acutely ill, per 1,000 of population, far below the facilities enjoyed by such cities as Detroit, Philadelphia and Chicago.

"An epidemic of any serious pro-

portions would fill not only the rooms, but even the halls of our hospitals, even with this new building completed," Dr. Simpson declared. "Without it, well, I leave that to your imagination."

Taxed To Capacity  
A constantly diminishing number of sick persons are being cared for in their homes, he pointed out, and even now the capacity of Rochester hospitals is being taxed to take care of those requiring hospital care.

From its very beginning, the physician said, St. Mary's Hospital has aimed, with marked success, to give the sick the best care obtainable at the lowest possible cost. Founded in 1827, the hospital has been operated by the Sisters of Charity of St. Vincent de Paul, an order which conducts over 60 hospitals throughout the United States.

"In the civilian defense set-up, the hospitals are to be the centers of medical activity for the protection of the people of Rochester," Dr. Simpson said. "In the opinion of the government, St. Mary's Hospital is such an important factor in defense that it was granted an A-1 rating on the priority list, clearing the way for all materials for its immediate construction. The government wants it, and Rochester needs it."

Emergency Needs  
"It is doubtful, in my opinion, if even the old operating pavilion, now in use, will be torn down until the emergency is over. Five additional operating rooms in reserve might prove beyond price if we should ever get serious attention from the enemy."

"We hope that the Lord will spare us any need for the use of this new hospital for a war-time emergency, but, should it come, the government wants it here and Rochester needs it here."

(Continued on Page 12)

GATHOLIC SCHOOLS		DIOCESE OF ROCHESTER	
REGENTS SCHEDULE			
January 1942			
	A. M.	P. M.	
Monday, Jan. 19—	Geography History B American Hist. Typewriting	Elem. U. S. History Latin, 2 yrs. French, 2 yrs. German, 2 yrs. Spanish, 2 yrs. Italian, 2 yrs. Economics	
Tuesday, Jan. 20—	Elem. English English 4 yrs. Plane Geometry Business Arithmetic	Spelling and Silent Reading Physics Chemistry Biology Shorthand 2 Comb. Shorthand and typing	
Wednesday, Jan. 21—	Arithmetic Inf. Algebra Adv. Algebra Bookkeeping 2	Latin, 3 yrs. French, 3 yrs. German, 3 yrs. Spanish, 3 yrs. Italian, 3 yrs.	
Thursday, Jan. 22—	Solid geometry Trigonometry History A Business Law	Comprehensive art Comprehensive music	
DIOCESAN HIGH SCHOOL EXAMINATIONS			
Wednesday, Jan. 21—	Business Law	Social Studies, Ninth Year	

Your Parish News Pages 7, 8, 9, 10, 11, 12, 13 and 14