

New Building Crowns Achievement

First Sisters of Mercy Arrived Here In 1857

Barratt Street, Dublin, Ireland, was the cradle which nursed the first community of the Sisters of Mercy founded by Catherine McAuley on December 12, 1831. The congregation having for its principal aim education also applied itself to "the Visitation of the Sick and the Protection of poor Women of good character."

The first community of Sisters of Mercy in the United States was established in Pittsburgh in 1843 with Mother Mary Francis Ward, close companion and cherished friend of Mother McAuley, as foundress. As the needs of the time demanded, the community branched to other metropolises in eastern United States. On June 9, 1857, Mother Mary Francis with 5 Sisters journeyed from Providence, Rhode Island to establish the Rochester foundation. The convent at 3 South Street, previously occupied by the Brigittine Sisters who had been serving the needs of St. Mary's parish, subsequently became the Motherhouse of the small community. "Select School"

September found the Sisters opening a "select school" of elementary and secondary levels in the convent, for young girls, and, likewise, teaching in the first parochial school in St. Mary's parish opened in the basement of the church. At the turn of the century, the Sisters were forced to abandon their work in the "select school" due to lack of proper accommodations.

Later they branched into other parts of the diocese to take up the work of the Sisters of Mercy in various parishes. The Motherhouse at South Street, being destroyed by fire in 1918 was transferred to the Sisters' summer home at St. John's Park. This inadequate establishment was forced to serve as the headquarters of the Sisters until the opening of the more commodious Motherhouse in 1931.

Progress Shown

From a small community of five, after having branched into other dioceses needing their help, the Sisters of Mercy have grown so that now, after 44 years of service to the

MOTHER McAULEY



FOUNDRESS

Rochester diocese, the Sisters are found laboring not only in parochial schools in Rochester but also in Elmira, Corning, Auburn, Hornell, Owego, and Clyde. St. James' Mercy Hospital with its training school for nurses, in Hornell is under the supervision of the Sisters. In the field of secondary education, the Sisters of Mercy are teaching in the Junior High School at St. Ann's, Hornell; Holy Family High School, Auburn; Elmira Catholic High School; St. Mary's Commercial School, Aquinas Institute and Our Lady of Mercy High.

From the time of their first establishment in Rochester, the Sisters have been found wherever charity demanded their administering hand. Visitation of the sick, in the home and in the hospital, has been one of the outstanding works in those lo-

A Tribute To

Words cannot give tribute to Mercy. Only living fidelity can do this. Yet, by words we may in some small measure portray the gratitude in our hearts.

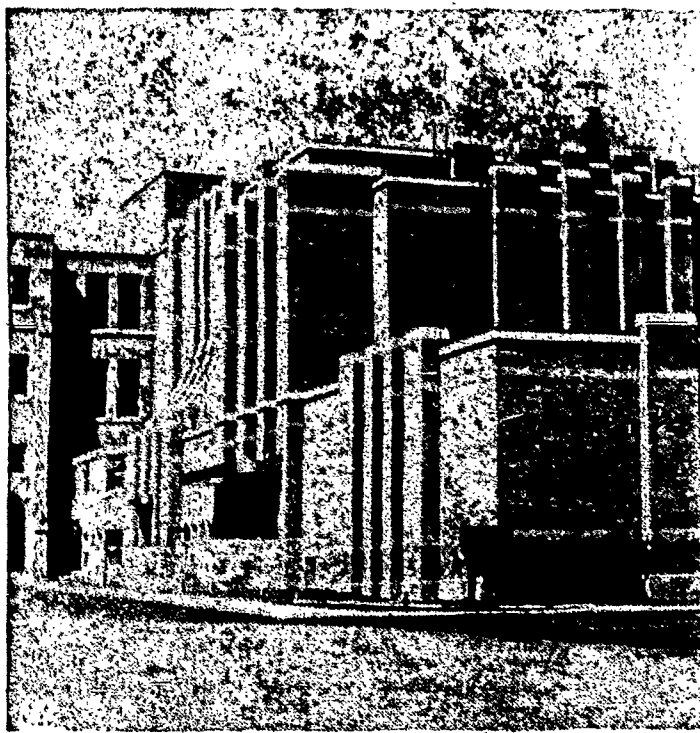
As we close its doors softly behind us the very stillness that settles is, indeed, solemn tribute to Mercy.

Here we learned in deeper measure the meaning of loyalty, of honesty, of courage, thus of happiness. For Mercy has pointed the way to a dust of goals—

first, the supernatural love; second the natural happiness.

Throughout all the to of our lives our yesterday at Mercy will remain in sunshine.

To our teachers who created the Mercy High love, to our most pleasurable—and our most difficult very walls of Mercy build a lasting monument and loyalty. And this



Modern Mercy High School as it appears today with gymnasium in the center, "old" building to the left.



First Mercy High School building, the first step in the history of Our Lady of Mercy High School, was erected in 1927.

First Mercy High Building

calities where a Mercy convent has been erected. The opening of Our Lady of Mercy High School in 1928 was just another venture to spread the spirit of the Sisters of Mercy, which is the spirit of their holy foundress, among Catholic young women, whom Mother McAuley felt were the saviors of the world.

Music Organization

When Church authorities in the diocese inaugurated the movement for Gregorian chant, they found the Sisters willing supporters of the cause. An important Music Organization has its headquarters at the Motherhouse which administers to the needs of the children demanding piano and instrumental training in the