

ST. AUGUSTINE PARISH

CHILI AVE. and LOZIER ST.

REV. JOHN H. O'BRIEN Pastor

Rev. Robert Kinsley Rev. L. Emmet Davis Assistants

MASSSES:

Sunday: 7, 8, 9, 10 and 11. Holy Days: 5:30, 6:15, 7, 8, 9 and 12:10. First Fridays: 6:30 and 8. Baptisms: Sunday-2:30.

JOSEPH A. MURPHY FUNERAL DIRECTOR

363 CHILI AVENUE PHONE GENESSEE 7640

ROSE ART STUDIO and GIFT SHOPPE GREETING CARDS and GIFTS

CRAMER DRUG CO. DRUGS PRICES at LOW AND MOST FREQUENTLY LOWER THAN MOST

"See FURSTOSS First" FOR YOUR GAS & ELECTRIC APPLIANCES

MARTIN WUEST PASTEURIZED MILK CREAM and BUTTERMILK

Plant's Bakery 393 CHILI AVE. GENESSEE 2646

Chili Ave. Hardware Housewares, Glass, Oil Paints, etc.

HOLY APOSTLES PARISH

LYELL AVE. and AUSTIN ST.

Rev. George V. Predmore Pastor

Rev. William J. Ayers, Assistant Rev. Michael P. O'Brien, Assistant

HOURS OF MASSES

Sundays: 6, 7, School Children's Mass at 8-9, 10 A. M. and High Mass at 11 A. M.

HOLIDAYS OF OBLIGATION

6, 7, School Children's Mass at 8 A. M., High Mass at 9:00 A. M. and Special Noon-Day Mass at 12:12 P. M.

"No fuel like an old fuel" COAL, COKE and OIL BECKWITH'S

LYELL AVE. LIQUOR STORE TOM TAYLOR FRED JACKSON

GARDNER and BADER AUTO ACCESSORIES GAS and OIL

GRIFFIN HAT SHOPPE 154 SHERMAN STREET

HY-GRADE FOODS 495 LYELL AVE.

ALVIN PLACE DAIRY BUTTER-EGGS CHEESE

COURTESY-QUALITY-SERVICE GLENWOOD 716 "MAX" the Florist

DODGE GRILL 1479 LYELL AVE.

HOLY REDEEMER PARISH

634 HUDSON AVENUE

Rev. F. William Stauder Pastor

Rev. Walter Carron Rev. William Schifferl Assistants

MASSSES:

Sunday: 6:30, 7:30, 8:30, 9:45 and 11:00. First Friday: 6, 7 and 8. Holy Days: 5:30, 6:30, 7:30 and 9. Baptisms: 2 P. M. Sunday

TRUSSES, ABDOMINAL SUPPORTS and ELASTIC STOCKINGS AT LOW PRICES!

A. J. Mattle & Son FUNERAL SERVICE JOHN W. MATTLE

WM. YALOWICH DRUG CO. 658 HUDSON AVE.

Edw. Brockmann's Sons CUT FLOWERS-PLANTS FLORAL DESIGNS

Headquarters for W. L. Douglas Shoes \$4.00 \$5.00

A. J. MEYER - 596 Hudson Ave. A Shoe Store Since 1888

ZAMIARA'S MEATS and HOME-MADE SAUSAGE

KANAPICKAS BAKERY Try Our Special OLD COUNTRY BREAD

PARISH NEWS

The Society for the Propagation of the Faith

The REV. JOHN S. RANDALL DIRECTOR

United Prayers of the Sick

Pentecost Sunday, June 1, is known the world over as Mission Sunday of the Faith. It originated in Rome just ten years ago and has since spread throughout the world.

Pagan Scoop

It is of interest to discover similarities in various religions. Even among the pagan forms of religious practices there is to be seen such a striking similarity.

No Stone Unturned

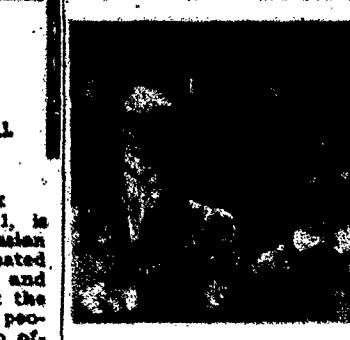
Once, when Euripides, the Greek tragic dramatist, was asked what was the best way to hunt for buried treasures, he replied: "Leave no stone unturned."

Probable the entering into this

entirely strange world, being separated more than like a stranger from their friends and family, is the great millions.

Has 1,400 Members

Washington. - The Carmelite Third Order has 1,400 members in the United States, more than half of whom are professed, according to a survey by the Rev. Anthony Dressel, O. Carm., National Director of the Order.



HAPPY WINNERS OF Scholarships at Nazareth Academy are these six parish school girls. In the picture are: Patricia Conroy, St. Joseph's; Patricia Conroy, St. Joseph's; Patricia Conroy, St. Joseph's; Patricia Conroy, St. Joseph's; Patricia Conroy, St. Joseph's; Patricia Conroy, St. Joseph's.

According To The Doctor

The anemic patient tires easily, even in performing duties in which he has long been accustomed. He becomes short of breath on mild exertion, is often conscious of the beating of his heart, frequently complains of marked weakness.

Anemia may be produced by excessive loss of blood or blood destruction. When a person loses fairly large quantities of blood over a long period of time, the red marrow cannot regenerate red blood cells and hemoglobin fast enough to keep them at normal levels and anemia results.

The most important chemical constituent of the diet which is necessary for blood formation is iron. This element is utilized in the formation of hemoglobin and when its supply is diminished an insufficient amount of hemoglobin is formed.

Getting On In The World

We have a great responsibility to live to your Faith. Not only is it a bond in the family, but your neighbor's eyes are upon you, skeptical eyes though kindly.

Priest With Library To Assumption College

NASHUA, N. H. - The personal library of the Rev. Isadore A. Janelle, Pastor of Holy Infant Jesus Church here, has been bequeathed to Assumption College, Worcester, Mass., in the priest's will, just probated in Manchester.

Requiescant In Pace

BAKER, Marie, wife of Frank, died May 23. FUNERAL, May 27 at St. Monica's Church. BONAPE, Mary, wife of Vincent, died May 18. FUNERAL, May 21 at St. Francis of Assisi Church.

Friday Is Memorial Day

With flowers and flags the entire nation pays homage to the dead-but these are tributes for the day. In our studio are enduring memorials of stone which will always stand, keeping the cemetery plot honored and beautiful.

TROTT BROTHERS CO., INC.

Designers and Builders of Monumental Work. 1120 Mt. Hope Ave. 59th Year. MONROE 73

O. L. P. M., St. Monica's, St. John Evangelist Holy Redeemer, St. Augustine's, Holy Apostles



HAPPY WINNERS OF Scholarships at Nazareth Academy are these six parish school girls. In the picture are: Patricia Conroy, St. Joseph's; Patricia Conroy, St. Joseph's; Patricia Conroy, St. Joseph's; Patricia Conroy, St. Joseph's; Patricia Conroy, St. Joseph's; Patricia Conroy, St. Joseph's.

'America First' Group Misuses Bishops' Message

WASHINGTON. - The question of their content of a few sentences from a statement issued by the Administrative Board of the National Catholic Welfare Conference in a letter addressed to the Chapter of the Holy Trinity, Michael J. Ready, General Secretary of the N. C. W. C.

The Neglect To Train Skilled Workers

Not a few of the faults for which the chief beneficiaries of the capitalist system must bear the blame are being revealed by the present world crisis. The chief ones are a lack of skilled workers in our country and a lack of trained mechanics.

Consecration Set

Edmonton, Alta. - The Most Rev. Edward J. Jennings, Bishop of Edmonton, will be consecrated at St. Joseph's Cathedral here on June 11.

TRIE IN AMERICA

In consequence of this experience a ten-year plan intended to be inaugurated in America. The Rev. John P. Archdeacon, O.P., Professor of Edgewood College, Wisconsin, died since 1922, died of a heart attack here.

Dominean Father Dies

Providence, R. I. - The Rev. John P. Archdeacon, O.P., Professor of Edgewood College, Wisconsin, died since 1922, died of a heart attack here.

Dominean Father Dies

Providence, R. I. - The Rev. John P. Archdeacon, O.P., Professor of Edgewood College, Wisconsin, died since 1922, died of a heart attack here.

ST. MONICA'S PARISH



Rev. Francis J. Borden Pastor. Rev. Joseph R. Borden Rev. William D. Tobin Assistants

MASSSES: Sunday: 6:30, 7:30, 8:30, 9:45 and 11:00. First Friday: 6, 7 and 8. Holy Days: 5:30, 6:30, 7:30 and 9. Baptisms: 2 P. M. Sunday

Kennedy's Grocery 838 GENESSEE ST. ICE-COLD BEVERAGES

Melnsanz Dairy Pasteurized Milk and Cream

Sound Equipment Co. RADIOS and APPLIANCES Sales and Service

CHARLES TRIMIN SHIRT-MAKING and alterations

Ashton Funeral Home JOSEPH E. BROCKMANN, Manager

Williams Pharmacy C. K. WILLIAMS, Ph. G.

GAUFFIELD'S HARDWARE ELECTRIC SUPPLIES

Blessed Sacrament Parish 534 OXFORD STREET

REV. THOMAS F. CONNORS Pastor

MASSSES: Sunday: 6:30, 7:30, 8:30 and 11:00. First Fridays: 6, 7 and 8. Holy Days: 5:30, 6:30, 7:30 and 9. Baptisms: 2:30 Sunday afternoon.

Monroe Pharmacy Professional Pharmacist

Oxford Pharmacy Prescription Dispensing

D. & D. Texaco Service Texaco Products Texaco Products

Whelan Hardware Co. SHEET METAL WORK

Why be without a NEW REFRIGERATOR? A 6 cu. ft. Model for \$89.95

Monroe Appliances Co. Open Front - Day, Night, Weekend

SEE OUR WINE SPECIALS Humphrey's Liquor Store

Parsons & Martell GROCERY and MARKET

Our Lady of Perpetual Help Parish 106 JONES AVENUE

REV. FRANCIS J. BORDEN Pastor

MASSSES: Sunday: 6:30, 7:30, 8:30, 9:45 and 11:00. First Fridays: 6, 7 and 8. Holy Days: 5:30, 6:30, 7:30, 8:30, 9:30 and 12:15. Our Lady of Perpetual Help Mass every Thursday at 3 P. M. and 7:45 P. M.

PHONE GLEN 7286 WE DELIVER Perry's Pharmacy

Get More Get KELVINATOR for '41 WILLS RADIO & REFRIGERATOR CO.

August M. Maier August M. Maier Funeral Home

Community Amoco Service