

DELCO-HEAT

Now... equipment advances and better production methods not only further improve quality, but, with increased sales, RIDGE PRICES are...
UP GO SALES
DOWN GO PRICES
 Payment until Oct. 1, 1941
 No 3 Year

THE NEW DELCO OIL BURNER

More efficient... yellow-green... exclusive features...
 Economy Unit, The New Fuel Control, Built-in Oil Conditioner, Delco-Designed and Built Controls.

GET THE PROOF

Before you buy an Automatic Heat, let us show you PROOF of the superiority of Delco Heat and the Good 3rd Installation.

W. A. McCormick
 4 Lake Ave. Rochester

MAIL ORDER PHOTO FINISHING

Empire Photo Laboratories
 4671 Colver Road
 SEA BREEZE, NEW YORK

"Everything Under the Sun" FOR THE OFFICE

EQUIPMENT FURNITURE, STATIONERY AND A FINE LINE OF EXCELLENT FOUNTAIN PENS.
Heinrich - Seibold STATIONERY CO.
 88 Exchange St. Main 2493

See the Van Hoesen Portfolio of Unitized Guaranteed

Wall Paper

Selected by Leading Authorities of:
 • Better Homes and Gardens
 • Ladies Home Journal
 • American Home
 • House Beautiful
 • House and Garden
 • For Style, Color and Design

See the Van Hoesen Portfolio of Unitized Guaranteed Wall Paper
 Show Room, 41 St. Paul St.

BETTER HOUSING

Single Family Home Paces Building Rise

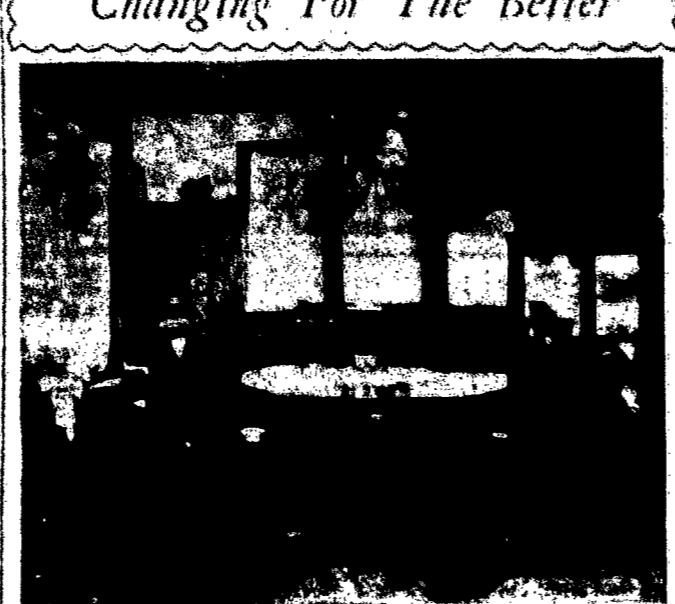
A feature of the recovery in residential construction is the great resurgence of the single-family home. Federal Housing Administrator Abner H. Ferguson said recently, in calling this fact one of the F.H.A.'s greatest achievements.

Of an estimated total of 340,000 new dwelling units built in non-farm areas in 1940 throughout the nation, 420,000 were single-family homes, a total closely approaching the average level for the 1920's of 427,000.

Single Family Unit Ahead
 It is significant to note, Mr. Ferguson said, that the single-family house now represents a much larger percentage of all nonfarm dwelling construction than in the 1920's. In 1920, single-family units made up 41 per cent of the total number of residential units constructed, as compared with 37 per cent in 1924, 54 per cent in 1927, 57 per cent in 1928, 62 per cent in 1929, and 64 per cent in 1930.

1940 Increase Substantial
 From 1934, however, this ratio has been almost consistently around 75 per cent and last year the 420,000 single-family dwelling units constructed represented 77 per cent of the total nonfarm building. The increase in the number of single-family dwellings was 10 per cent over 1939 and nearly 11 times larger than the depression level of 39,000 in 1933. The recovery has been relatively greater for single-family houses than for other types of residential construction.

Changing For The Better



Changing a dark and dreary dining room into one that is bright, modern, and cheerful is not difficult for the enterprising home owner, whose pictures indicate.

The upper illustration shows an old-fashioned dining room while the lower one is an architectural rendering of what it will look like with a minimum of expense. Furniture that is comfortable, yet does not take up much space, modern fixtures, and wood paneling throughout have given new "livability" to this room. A wood paneled radiator below the window contrasts attractively with the vertical paneling.

Whether it is one room or several, or the exterior of your home you wish modernized, consult your local lumber dealer. He is a skilled craftsman in such matters.

Knowledge Of Wood Essential To Home Maker

If you would save money on any kind of construction or modernization, be sure you know about the different grades of lumber. Lumber is graded according to quality and each grade carries a different price, depending largely upon the number of blemishes such as knots, which the classification permits. Many people use better — and therefore more expensive — lumber than necessary because they do not realize that slight knots are not a disadvantage for many construction purposes.

Outside material which is to be painted may vary well contain knots and produce a satisfactory result at less cost. There is one point in connection with the use of the lower grades of lumber which it is well to remember. Knots contain resin and pitch and if covered directly with ordinary oil paint, this resin and pitch will eventually "burn" through. To eliminate burning and to provide the best paint coverage for knots, give each knot a preliminary coat of Shellac before you start to paint. This will seal in the resins and pitch and you will never see your knot again.

Variety in Siding
 There are about 25 different types of stock lumber siding items available. If you know of the various grades, you can make a choice which may remove the siding on your new home from the "ordinary" classification. Wide beveled siding in 4 and 6-inch widths is, of course, the most popular style today, but don't forget that you can still buy narrow siding. Bush siding, moulded drop siding, log cabin siding (which may be painted), board-and-batten siding and plywood siding. Remember, you can even use narrow widths of interior paneling material for outside siding, if you prefer.

Paneling Looks Better
 It is generally a good idea to stain and possibly finish wood paneling before the material is applied to the wall. In spite of the fact that the paneling you are now using may be well-seasoned material, there is bound to be some slight come-and-go with the seasons, which may result in a thin white line of unfinished wood between the boards in the middle of the winter. If your paneling is pre-finished, swelling and shrinkage may take place without being noticed.

Repaint Worn Paint
 Americans are sometimes called wasteful. The point is illustrated by the story of a sailor who once said that an English sea captain would always order his crew to scrub down the white sides of a cabin, while an American captain would order his crew to repaint the cabin. We often repaint to hide dirt, which can be less expensively removed with a good application of soap and water. A house or any other object which is repainted when the paint shows signs of deterioration or gives evidence that it is no longer protecting the wood which it covers. Sticks, dirt or water running over furnace soot, produce a shabby looking wall which does not necessarily need to be re-painted, but should be washed down.

YELLOW VAN and STORAGE, INC.

WE MOVE YOU
 Anywhere—Any Place—Any Time
 ALL LOADS INSURED
 6855—MONROE—6856

CLARK SUPPLY CO.

HEADQUARTERS FOR
PITTSBURGH PAINTS
 Beautiful with
THIBAUT WALLPAPERS

16 N. UNION ST. (Just Off East Ave.) STONE 3177

BONELESS SHAD FRIDAY!

65c PLATE

WEGMAN'S SEAFOOD HOUSE

78 W. MAIN—Opposite Hotel Rochester

SKIPPERS

IT'S FITTING OUT TIME!

Whether you own a small boat or a large yacht, you'll find supplies here by every leading manufacturer to put your craft in ship-shape condition for summer.

• TOPSIDES • HULLS
 • DECKS • SPARS

ROCHESTER'S MOST COMPLETE PAINT STORE

Barnard, Porter & Remington

9, 11, 13 North Water Street - Main 8140

HART'S

HART'S Premiums Are "Extra" Savings

Visit Our Premium Parlors
 388 EAST MAIN ST., NEAR GIBBS

Then you'll realize why thousands save Hart's Coupons. The display of valuable merchandise you can get is simply amazing!

SHOP AT HART'S

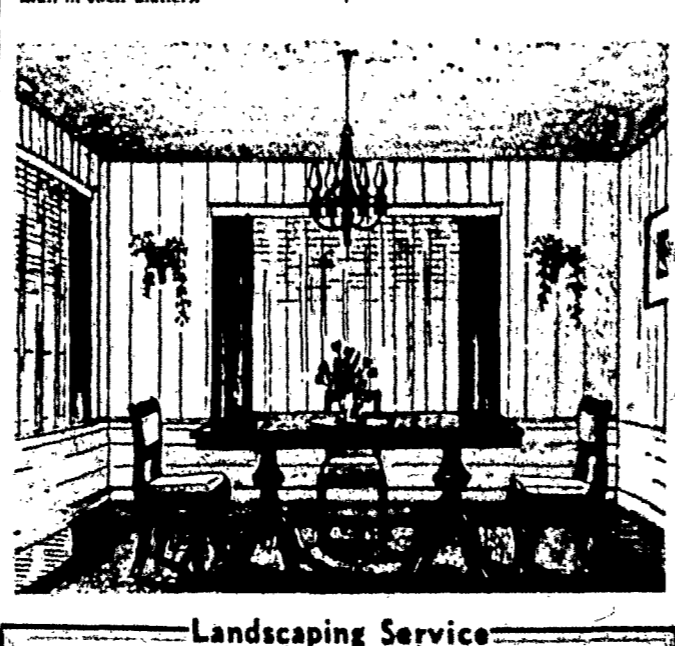
AND SAVE ON YOUR FOOD NEEDS

Sharp Corners Create Hazard

Streets that intersect at sharp angles are not only hazards for motor traffic but also constitute a good example of waste.

Federal Housing Administration Land Planning officials point out that when streets are planned to cross each other or form a T at an angle, sharp corners are a serious objection. Right angles, both of these objections are overcome. This also assures square-cornered lots, which are better adapted as residential sites than irregularly shaped lots with sharp-pointed corners. Another favorable factor in development of this type subdivision is that the total length of street system will be reduced thus effecting a saving in construction costs.

Many bad traffic accidents in suburban districts result from poorly planned street intersections. When a local street enters a major street at an acute angle, visibility is seriously impaired and traffic has a tendency to move in and out of such streets without reduction of speed. These two factors are largely responsible for the enormous loss of life due to automobile accidents at intersections in residential areas.



Landscaping Service

Hedge Planting

There is no investment that brings greater returns, both in pleasure and profit than an investment in proper landscaping. The rear yard is an ideal outdoor living room properly developed with roses, perennials, shrubbery and hedges.

Hedges fit into any planting scheme. They use being manifold, combining beauty and utility.

Grown high they give seclusion, grown thick they are a defense against trespassing, they identify property lines, screen vegetable gardens and are a magnificent background for shrubs, plants and garden accessories. They also screen objectionable views.

As a background for a rose or perennial garden a hedge is unsurpassed. It emphasizes the beauty of the plants, acts as a windbreak and reflects all the beauty of the yard and garden. Every back yard should be enclosed, secluded and made a part of the home.

Hedges are formal and informal. Formal comprise Privets and Barbary Incompar. Spreading shrubs. This opens the door for the planting of shrubs and perennials too. Every one may have and enjoy a beautiful, perennial garden, they are easy to grow and prove most popular. Their exciting color combinations with their striking colors. They produce the pleasure and economy of having cut flowers right out of your own garden, making your outdoor living room enjoyable and attractive. An often neglected spot is the garage, this can easily be made into one of the most attractive highlights of the home grounds.

Our landscape consultant is always at your service to answer any questions you may have. There is no charge for this service. Write Catholic Courier Landscape Consultant or Phone Stone 1134.

Better Homes and Better Living

ATTACHED BUILDINGS
 An attached garage or other attached building may be constructed with the financing arranged under the Modernization Credit Plan of the Federal Housing Administration. Funds for the work are obtained from qualified lending institutions.

PROTECT PIPES
 Smoke pipes flues and other metal surfaces subject to high temperatures should be protected with paint prepared especially for that purpose unless the surfaces have otherwise been protected in course of manufacture. Such paints will tend to prevent rust and prolong the life of the metal.

MINIMIZE HEIGHT
 Structural methods which minimize height are usually the most economical and result in small houses of better exterior proportions than when they are high in relation to their width and length. It is said by officials of the Federal Housing Administration.

CHIMNEY SUGGESTION
 Unless the building budget will permit construction of a chimney of good proportion in relation to the size of the house, it is thought highly desirable and also more economical to use an inside chimney, according to Federal Housing Administration technical authorities.

OUT-OF-SIGHT WIRING BEST WHEN PLANNED
 Modern building methods often make it difficult to conceal telephone wires after the house is built. Out-of-sight wiring facilities, which will help preserve the beauty of a new home should be provided in plans for a new home. F.H.A. officials recommend.

Bring Your Friends to the "School of Cookery"

Questions and Answers

Q What is the correct tread width for windows in a stairway?
 A The width of the tread at a point 18 inches from the covering end of the window should be at least equal to the tread width in the straight stair run. For the average stairway this point will be approximately in the middle of the stair width.

Q How can I prevent downspouts from becoming clogged with leaves and twigs?
 A Install metal basket strainers at each gutter outlet to downspouts. These strainers will catch debris and prevent its being washed down into the downspout. If the gutters are copper, use a strainer made from copper wire. Galvanized wire strainers can be used for all other gutters. Strainers will require periodic cleaning.

Q I want ceiling-height bookshelves in my new house. Can you help me in the planning of these shelves?
 A Adjustable bookshelves supported by pins at the end of the shelf are desirable. These pins are usually spaced one inch apart vertically so that a variety of shelf heights is possible. Shelves need not be more than eight or nine inches deep unless large books are to be housed. Shelves are usually made of three-quarter-inch material and should not exceed two feet six inches in unsupported length.

You Can Win Prizes at the "School of Cookery"

This Beautiful Self-Starting Electric Clock

ONLY \$3.95
 Comes in 3 colors: White, Ivory and Red

Has all the features of models formerly priced at \$4.95

GENERAL ELECTRIC

Time is the Right Time

Any time is a good time to buy an electric clock. And right now is a particularly good time, because you can obtain the beautiful NEW CHEF model at the special low price of \$3.95. It can be placed on a shelf or hung on the wall and is so attractive that it will harmonize with any room.

Come and see this April bargain special and look over the many other models—including bedroom and living room clocks... or alarm clocks that gently but insistently tell you when to get up in the morning.

To insure correct time in your home... or for an anniversary, wedding or graduation present... buy an electric clock.

Rochester Gas & Electric

Main 7070

Pillsbury brings you precious extra B-vitamins and iron at low cost... in your everyday baked goods!

Almost as if by magic, now all your baking can be enriched with added health and strength for your family—without your taking a single extra step, or buying a single extra thing! Three extra health essentials—including vitamins your family needs every day—have been added to Pillsbury's Best without in any way changing the flavor, appearance, or superb baking quality of this famous flour. Think what this means! Now everything you bake can help build your family's health as never before. If, when you shop for flour, you simply insist on Enriched Pillsbury's Best Flour.

Remember—good-baking flour, like Pillsbury's Best, is still the same good-baking flour after it has been enriched—but inferior flour, even if it is enriched, is still inferior flour. And remember something else—enrichment itself must be done carefully, so that each bag will be uniformly enriched. The same strict milling standards which make Pillsbury's Best a fine "baking" flour also make it a uniformly enriched flour!

It's the same fine, dependable PILLSBURY'S BEST... new enriched!

NO CHANGE IN FLAVOR • NO CHANGE IN APPEARANCE
 NO CHANGE IN BAKING QUALITIES

Enriched Pillsbury's Best Flour

Uncle Sam asked for this enriched flour. Why is it important to national defense?

Pillsbury answers your questions about this new enrichment of white flour

You understand that modern science has perfected a way to add precious food elements to your "daily bread." But just a few things are added? What does it mean to you? Here, briefly, are the answers to these natural questions:

1. Vitamin B₁ (thiamin) is added—helps the body make proper use of energy foods (carbohydrates), which is essential to: (a) Proper growth in children. (b) Good appetite for both young and old. (c) Sound nerves. (d) Ability to better resist infectious diseases.

2. Iron is added—helps build the blood.

3. Vitamin B₂ (riboflavin) is added—helps the body use the vitamins B₁ and iron. It also prevents skin diseases.

4. Extra amount of Pillsbury's Best is added with the enrichment.

Save the THIRTY STARS which are posted in your bag of Pillsbury's Best Flour with other Pillsbury products. They are redeemable for gifts of choice, including the fine, beautiful, silver-plated and stainless steel flour sifter. All 30 stars, with the 30 Pillsbury's Best Flour, Dept. 124, Minneapolis, Minnesota.

NEXT 'SCHOOL OF COOKERY'

APRIL 17—ST. AMBROSE PARISH