

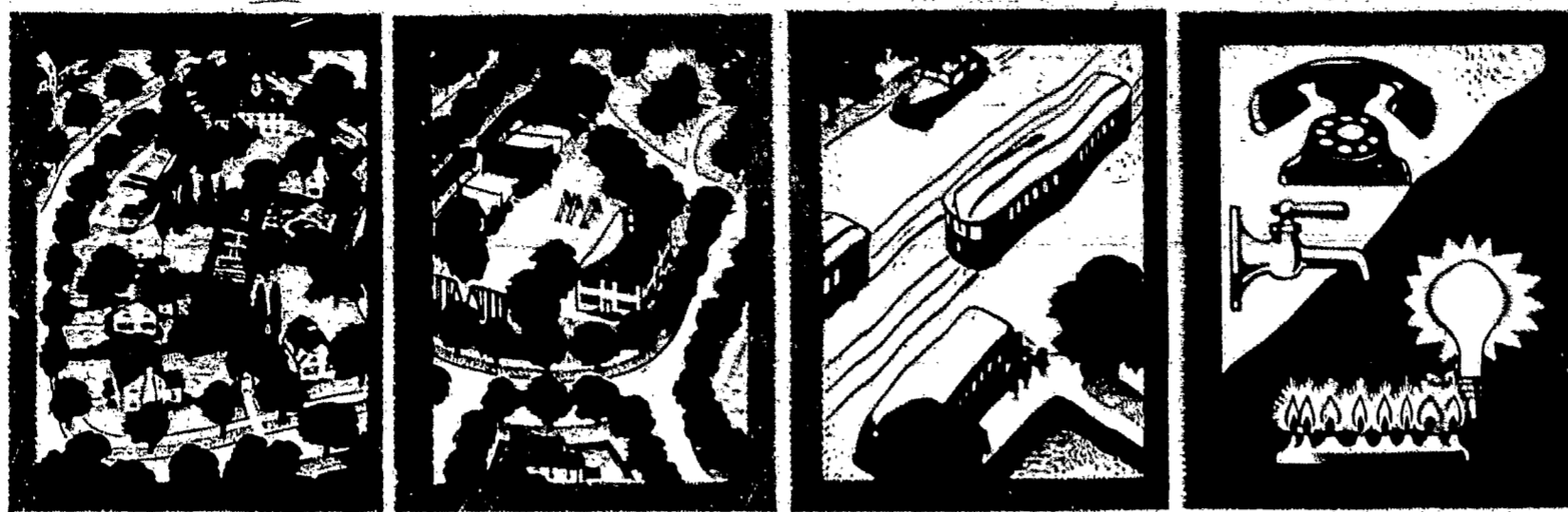
NEXT 'SCHOOL OF COOKERY' DEC. 19 — ST. FRANCIS XAVIER'S

St. Michael's Parish Boasts Record Crowd

The 'School of Cookery' was given before one of the largest parish crowds in its history. St. Michael's parish had approximately 400 in attendance as the hall was filled with interested listeners. The Rev. Arthur Florack personally supervised the preparation of the hall and was present for the demonstration. His splendid cooperation and the work of the women of the parish made this record turnout possible.

A special Christmas party honoring Father Florack is scheduled for Dec. 12 at which the Excellence, the Most Rev. James E. Kearney, Bishop of Toronto, will be the speaker and guest of honor. The occasion will be sponsored by the women of the parish. Plans have been carefully made and worked out and a gala evening is anticipated.

SELECTING YOUR HOME SITE REMEMBER THESE FOUR FACTORS



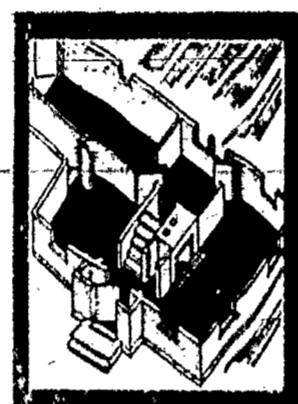
DESIRABLE NEIGHBORHOOD—The future of the investment depends in a large measure upon the desirability of the neighborhood.
ACCESS TO PARKS AND SCHOOLS—Large measure upon the desirability of the neighborhood.
ADEQUATE TRANSPORTATION—Transportation facilities can be an important factor in family comfort as modern heating, lighting, plumbing.
ADEQUATE UTILITIES—As adequate water supply is essential, gas, electric and telephone service should be available.

What To Do When You Are Entertaining At Luncheon

Luncheon may be divided into three types. Formal luncheon with maid service, informal luncheon without maid service and bridge luncheon served on card tables.
 The table is set in the dining room for the first two and for the bridge luncheon the small tables are laid in the living room in this case the dining table may or may not be set for buffet service.
Lace Best Covering
 Lace is the most favored covering for the luncheon table in the dining room, with linen and sport fabrics also in the running. Either cloths, two long runners, or place mats may be used. Damask, however, is seldom seen.
 Flowers are usually selected for a luncheon centerpiece, and they are best arranged in low bowls. A spreading centerpiece is ideal, because candles may never be used on the table for any daytime meal and empty spaces must be filled. Sometimes hostesses like two small rectangular vases with a low bowl

Better Homes Better Living by the Housing Editor

A poorly planned house is not a good investment. A house that is not properly constructed may easily become a liability in a few years, requiring repairs and costly maintenance. A poorly built or too-cheaply built house can be uncomfortable and expensive to heat in the winter and uncomfortable and damp in the summer.



In a well-planned house, its various elements are balanced in quantity, quality, and cost and are so combined that they result in a satisfactory abode. Federal Housing Administration officials say that the necessity of well-balanced design is especially important in the small house of low cost, where a maximum amount of usable space with maximum comfort, convenience and privacy as possible must be obtained for a minimum amount of money.

Tempting Equipment Often Proves Pitfall to Buyer

Careful study before selecting mechanical equipment for the home is far more necessary now than ever before. The increasing number of mechanical appliances now on the market require careful consideration of such items as maintenance, safety, and reliability. In the F.H.A. Technical Bulletin No. 8, which is titled 'Mechanical Equipment for the Home' the prospective householder is cautioned not to succumb to the temptation of overstocking himself with mechanical devices at the possible sacrifice of essential comfort.
 The basic factors general location of property, neighborhood, relation of the house to its site, the provision of natural light and ventilation, the comfort and convenience of the plan, the soundness of the construction deserve prior consideration. Federal Housing Administration officials say that no amount of equipment can make a satisfactory house where these basic factors are not properly achieved.
 According to the bulletin, a number of principles should be followed in making selections of equipment.
 The initial cost of the equipment must be carefully balanced against the cost of its operation and the probable returns in comfort.
 It must be remembered, too, that the most costly is not always the best. The best is that which is primarily true of equipment which contains movable parts.
 Items of repair, operating costs, and probable length of service before replacement must be considered when choosing equipment.
 Where economy is a factor, it is essential that a comparison be made between the different types of equipment and that all costs be figured in, and the element of the utility be weighed against those costs.
 If it is necessary to forego some items of equipment, it will be advisable to give up first those items which provide merely ease of service or control or refinement in appearance without compensating savings in operation.

fore replacement must be considered when choosing equipment. Where economy is a factor, it is essential that a comparison be made between the different types of equipment and that all costs be figured in, and the element of the utility be weighed against those costs.

If it is necessary to forego some items of equipment, it will be advisable to give up first those items which provide merely ease of service or control or refinement in appearance without compensating savings in operation.

SALADS

The molded or frozen salad has decided advantages in meal preparation since it can be made far in advance of serving time. These salads also help greatly to add color and design interest to any meal.

- 1 package lemon
- 1 teaspoon dessert gelatin
- 1/2 cup warm water
- 1/2 cup mayonnaise
- 1/2 cup grated vinegar
- 1/2 teaspoon salt
- 1/2 cup chopped pimientos
- 1/2 cup mayonnaise
- 1/2 cup grated cheese
- 1/2 cup chopped pimientos

Buy a Merrimac Cook Book

THRIFTY

Because it's milled from a scientifically "balanced" blend of America's choice wheats, Pillsbury's Best works perfectly in all kinds of baking... never causes wasteful baking failures. That makes it an economical as well as a satisfying flour to use. Why not try it yourself!



PILLSBURY'S BEST FLOUR

New Paper Napkin

FULL-AP-SIZE

A BIGGER VALUE... SMARTER... MORE PROTECTION

At last a paper-napkin that really covers your lap! New Test-Mark napkins are inches longer—in a smarter, new dinner-fold that's more practical to use and more attractive for parties, too! Soft, snowy white paper attractively embossed. A full-half-gro-packed, colorful new boxes that keep these napkins clean and fresh.



TEST-MARK

AT YOUR FAVORITE STORE

Companion Products of the Same Quality

BAKER'S

U. S. CERTIFIED COLORS and PURE VANILLA



Avoid Chimney, Wood Contact

Wood should not be built tight against a chimney according to technical advice of the Federal Housing Administration.

Water may be prevented from coming in around the chimney by means of "flashing" and "counter-flashing."

Flashing is metal—the galvanized iron lead or copper nailed onto the roof and under the shingles and bent up against the chimney. Counter-flashing is the metal set into the brickwork and bent down over the flashing to form a watertight joint.

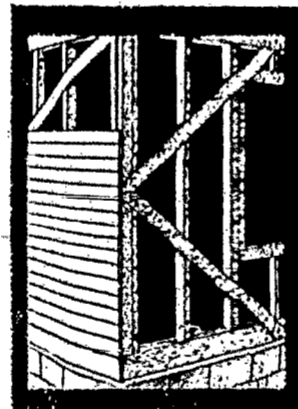
The flashing and counter-flashing should be placed so as to overlap completely and thus allow for any movement that may occur between chimney and roof and as a protection against the entrance of moisture during heavy snowfalls.

Flashing may be replaced or repaired as a maintenance project financed under the Modernization Credit Plan of the Federal Housing Administration. Funds for the work are obtained from lending institutions qualified by the FHA.

Good Planning Pays.

One conclusion that has been firmly established by the Federal Housing Administration from the study of thousands of homes is that only those subdivisions located with correct reference to city growth and population trends business and industrial centers and other facilities are profitable sources of benefit to both the buyer and the seller.

Buy a Merrimac Cook Book



In a soundly constructed house, the foundations, floors, roof, walls and ceilings must meet the test of time and wear.
 But as a rule, the average home builder does not have the technical knowledge necessary to check on structural details. For example, methods used in constructing the frame of a house usually are not understood by the layman or if they are the framing is soon covered and only by pecking around posts and sills in the basement and under eaves and floors in the attic can a householder obtain a partial idea of how well the work has been done.
 A family building its home under the FHA-insured mortgage plan has better assurance that its home will be well constructed for the course of construction of the home several compliance inspections are made by FHA representatives to ascertain whether or not the methods and materials used conform to the original plans and specifications and to the standards set by the FHA.

Manufactured and preserved vegetables, such as canned corn, peas, pickled beets, cold cuts, soups, olives, celery, ice cream, etc., are also available.

SCHOOL OF COOKERY

To Be Held At St. Francis Xavier Church 314 BAY STREET Thursday, December 19, 7:30 P. M. BRING YOUR FRIENDS TO OUR PARTY

Bookshelf Plans Require Thought

The need for more bookshelves has been emphasized many times in articles offering advice on the building of new homes or the modernization of old homes. Various treatments are suggested, some advising the use of one whole wall of a room for bookshelves while others suggest the lining of both sides of a fireplace with shelves. It is granted that a few books are ornamental and necessary to the creation of a "homey" room but that endless rows and rows of books are all similarly bound and in harmonizing colors should be read but not seen. Such an extreme use of bookshelves detracts from the color treatment of the room and in many cases prevents varied furniture arrangements.

A modern trend is toward keeping most of one's book collection in concealed bookcases instead of having all open bookshelves. In planning a new home to be built under the Insured Mortgage System of the Federal Housing Administration, the home builder should give careful consideration to the size, style and placement of bookcases.

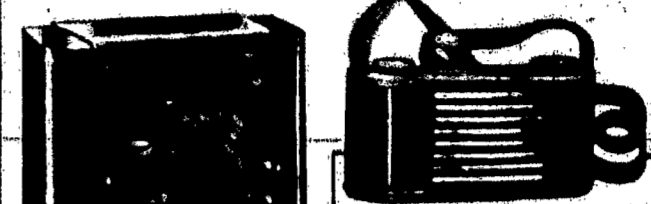
How To Locate Roof Leak

To locate a leak in the roof in dry weather, a garden hose can be played on the approximate location. An examination of the inside should follow.

Another Shipment—Just Arrived!



PHILCO 311C. Powerful 6-tube AC DC Superheterodyne Built-in Super-sensitive Aerial System Electric Push Button Tuning. \$26. There's more... but they'll go fast! Come in while our stock is complete... order now! Special Christmas Terms!



PHILCO 310T. 7 tubes. Built-in Super-sensitive Aerial System. Adjustable Brown Plastic Cabinet. \$29.95. PHILCO Shockless PORTABLE RADIO. 600. Plays any where on 105-110 power. Amazing performance. Unbelievable plastic. \$18.50. PHILCO New 6-inch Oval Speaker. 5-tube AC-DC. Built-in Loop-Aerial. Shockless Tuning! \$14.95. Special Christmas Terms!

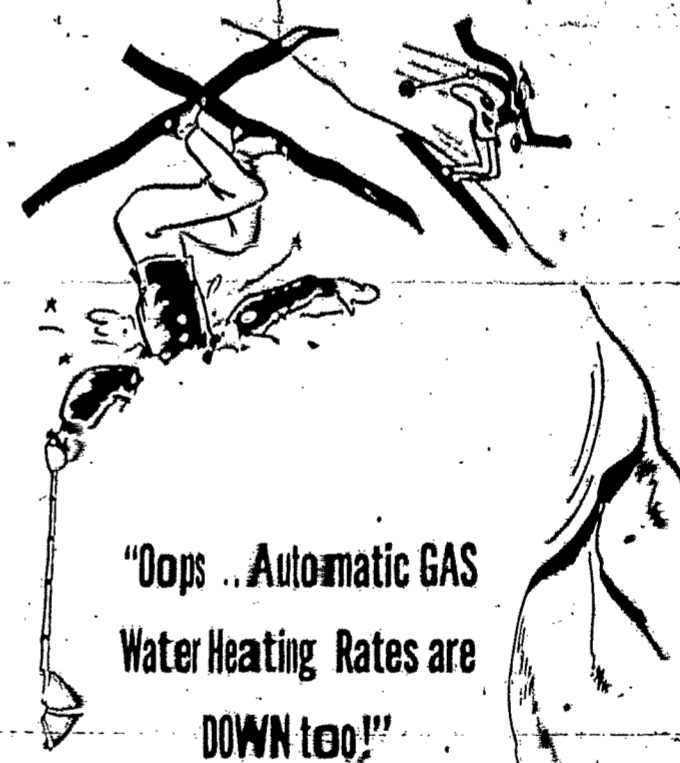
Carroll Radio Sales, Inc. 529 THURSTON ROAD OPEN EVENINGS GENESEE 6826

USE THE NEW

101

PREMIUM BARGAIN COUPONS

They Are Worth Money To You—One on Every Bottle



Costs slashed as much as 20% in Rochester district! Now automatic gas hot water service costs little or no more than your present method.



\$1 A MONTH RENTS AN AUTOMATIC GAS WATER HEATER

Pay A Small Amount For Gas Used ROCHESTER GAS & ELECTRIC Corporation