

PRESENT LOW COST FINANCING AN URGE TO BUILD, MODERNIZE, NOW-

DIRT WEARS RUGS
LET US CLEAN YOURS
BY OUR SCIENTIFIC PROCESS
"Year Rag Will Last Longer"
GRAY'S
Memor 1864 251 Sanford St.

Classified
FLOWERS FOR SALE
Flower Special: Red and green gladioli, purple, white, yellow, pink, and blue. Also, aster, geranium, zinnia, 15c doz.; pansy, 25c doz.; gladioli, 15c doz.; peonies, 15c doz.; carnations, 15c doz.; floral shop, 24 DeWitt St.

FLOORS
Hardwood Laid
Jit Floors Refinished
Asphalt Tile, Cork Tile, Rubber Tile, Cellulose Wood Block
Free Estimate Call GEN. 4675
Genesee Flooring Co.
J. DeClerck 178 Ellicott St.

FOR AN ATTRACTIVE SUBSTANTIAL BLACK TOP DRIVEWAY NEATLY INSTALLED
Permanent Roadways
INC.
Rochester, N. Y.
PAVING SPECIALISTS
DRIVEWAYS FINANCED

Stock Parts Save Money

Special millwork, that is, wood parts of the home which must be worked out to a specific pattern in a mill for one job only, is much more expensive than standard millwork which is produced in large volume by special organizations which devote their entire time and attention to the manufacture of so-called "stock" items.

It follows, naturally, that the more stock material used in your home, the lower will be the general millwork cost. This means that if you select your windows, your trim, doors, cornices, mantels and front entrance from patterns which are items of stock millwork, you will save with a large mill, your millwork cost will be at least one-third less than if all of these items were specially manufactured to your pattern.

Start With the Stairs

One of the most important savings in the field of stock millwork is the use of ready-made stair parts which are almost universally available. There are stock members for practically any type of stairway which you might select. In general, there are about five or six different stairway patterns available. You choose the one which suits you best, and from which to choose the one hand-rails, balusters, and end able to your home. Stock stair brackets, and starting trades.

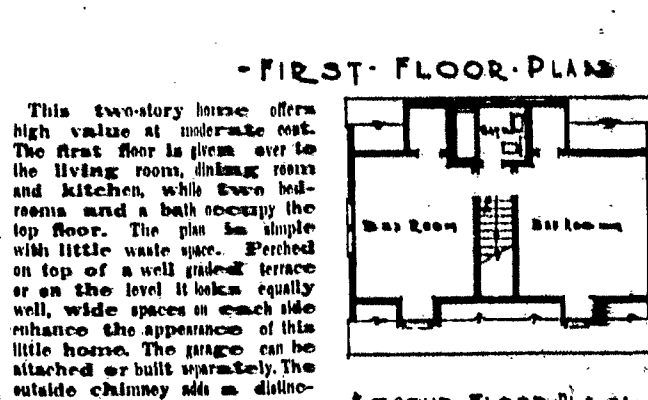
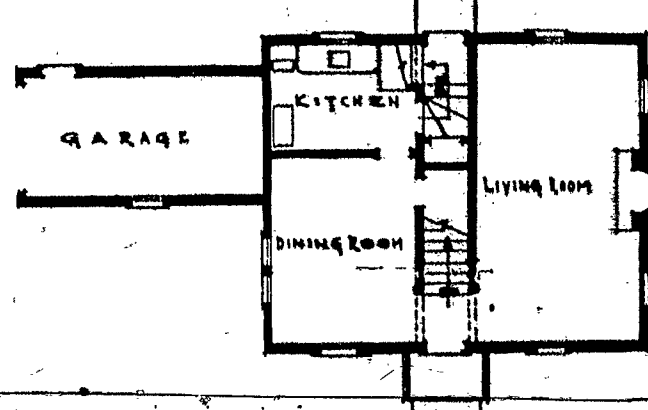
One large millwork manufacturer lists parts for eight ready-made stairways. They are ready-made in the sense that all parts are obtainable in a harmonious group. A key to the style of these stairways is indicated by their names: Georgian, Colonial, Worcester, Plymouth, Lexington, Jamestown, Nantucket, and Windsor. The Georgian is for English homes, and the others for the New England Colonial.

Designs Are Well Selected

In general, the architectural design of stock stair parts has been selected from time-proven patterns, and in selecting and specifying such members for a new design will be even better than that which could be produced specially for your home by a local draftsman.

If stock parts produce a saving in stairways they can do it throughout your home, and if you want to get the most out of your money, a good formula to follow is to purchase stock parts wherever possible.

TWO STORY HOME OF BRICK AND WOOD



This two-story house offers high value at moderate cost. The first floor is given over to the living room, dining room and kitchen, while even bedrooms and a bath occupy the top floor. The plan is simple with little waste space. Perched on top of a well guided terrace on the level it looks equally well, wide spaces in each side enhance the appearance of this little home. The garage can be attached or built separately. The outside chimney adds a distinctive touch.

Mirrors Add Spaciousness

The reflective quality of a mirrored surface is an effective tool in the hand of a skillful home owner.

Built-in mirrors increase the apparent spaciousness of a room and lighten dark corners. Well placed, they bolster a dull room by the reflection of lights and by throwing back important colors.

The use of colored plate glass for mirrors gives them a range of attractive colors available to blend or contrast with other objects in the room.

First Aid To Sticky Windows

When windows swell from heavy rains, loosen the sash which holds the window sash in place. If this does not improve the condition, wait until the sash is dry and apply a thin coat of pine floor wax throughout the length of the sash. The wax fills in the grooves with linseed oil also may be helpful if the windows are too tight even when dry. It will be necessary to remove the sash and plane down one side. Weatherstripping the windows will provide easy sliding of the sash and will reduce air infiltration.

BATHROOMS HAVE USE FOR WATER-RESISTING

Water-resistant materials are particularly adaptable for use in bathrooms. Linoleum, waterproofed wallpaper, asbestos, wainscoting, asphalt-tile flooring, metal tile, and ceramic and glass tile can be used to advantage.

Garbage Container

An underground receptacle properly designed and having a pedal-operated cover, is a good arrangement. Containers above ground can be included in a small lattice or hedge-screened service yard located on the same side of the house as the garage driveway, kitchen, and service entrance.

CLEAN HEATING PLANET NOW, EXPERTS ADVISE

Early summer is the proper time to clean your furnace or heating plant. The residue of soot and other dirt is inclined to absorb a certain amount of moisture and tends to rust the interior of the unit. This is the advice of heating experts of H. Roberts & Sons, Inc., 81 Paul and Andrew Streets.

Roberts have been in the heating business for 62 years, handling sale and repair of stoves, ranges, furnaces, boiler and other types of heating equipment. They have several floors of their building with parts for nearly every make heating apparatus or have the spare part casting forms for types no longer manufactured. Their repair and cleaning men have been with the company for a number of years, all having named their trade with Roberts.

They further advise, no matter what type of heating plant, not only clean the unit itself but also the chimneys, hot air ducts, and in case of boilers have them "blown" or interior of boiler cleaned out. This not only is a preservation of the unit but also an elimination of fire hazards.

Garbage Container

An underground receptacle properly designed and having a pedal-operated cover, is a good arrangement. Containers above ground can be included in a small lattice or hedge-screened service yard located on the same side of the house as the garage driveway, kitchen, and service entrance.

Log-Siding Has Charm

Stock Item For Summer Cabins

No type of structure is so universally admired nor so universally desired as the modest home of all American residences - the time-honored log cabin - one of the very few architectural styles originating in America.

The construction of a genuine log cabin, one built from the whole trees felled in the woods, is a difficult, time-consuming task; and unless the builder is familiar with the species of wood and the details of good cabin construction, the result may be none too permanent. Ordinary wood construction is much less expensive and of course far more weather-tight and durable than a genuine log wall.

All of the esthetic reality of the log cabin can be reproduced much less expensively today by the application of log-cabin siding which is now a "stock" item in every retail lumber establishment. Log-cabin siding is twice as thick as ordinary siding, the total depth of the wood amounting to about 1 1/2 inches. Each piece is finished "ship-lap" style as protection against the weather. Because of its unusual strength and because it is most often employed in air-circulation for summer use only, log-cabin siding is generally applied directly of wood framing with out sub-sheathing.

Since log cabin siding represents only the half curve of the log, two applications - one on the exterior and one on the interior - are necessary if the complete illusion of a solid log wall is desired. However, if the log cabin appearance is required only on the exterior of the building, the interior framing may be sealed with ordinary wood painting, plywood or any standard interior wall covering. Of course the ideal from a practical standpoint is the rustic application. This provides a hollow cavity with an air space equivalent to the width of the siding, which may be filled with insulation, to greatly improve the summer comfort of the cabin.

Stained brown to match weathered logs, and with the spaces between the half curves painted to simulate chinking, log-cabin siding preserves all the charm of the real log cabin with none of the latter's tendency to be cold, drafty and leaky.

Many users of log-cabin siding do not stain the exterior of their cabins but give them a coat of clear lined oil once a year. This is sufficient to preserve the wood and prevent weathering, but allows the action of the wind and rain and sun to reduce the wood color to a naturally weathered tone.

VACATION MONEY

Personal and Automobile Loans AVAILABLE AT LOW COST!

If you are steadily employed and need money for an automobile, vacation, or what not - consult our Loan Department. No collateral or co-maker required. Small monthly repayments. Private consultation rooms.

Free Parking Facilities at 101 Exchange St.

GENESEE VALLEY TRUST COMPANY

Exchange and Broad THE BANK OF PERSONAL SERVICE Member of F.D.I.C.

We'll tell the World!

ACME QUALITY HOUSE PAINT

It is tough, long wearing, weather resistant and it's economical too. A few gallons goes a long way. Buy it!

\$2.80 Per Gal. In 5-gal. Kits

ACME QUALITY INTERIOR GLASS PAINT

It is tough, long wearing, weather resistant and it's economical too. A few gallons goes a long way. Buy it!

\$2.80 Per Gal. In 5-gal. Kits

Paint Prices Reduced! Now you can afford to use the best ACME quality paint and finish of new being used at low prices, which are as reasonable as any of the cheaper, well-known brands on the market.

PHONE-STONE 1948 For The Name of Your Nearest ACME Dealer

HADLOCK PAINT CO., INC.

WHOLESALE DISTRIBUTORS 444-470 CENTRAL AVE.

SO LITTLE EFFORT

It is required to sell your merchandise that you have the best of the Catholic Courier. It helps to make your advertising pay. It helps to make your advertising pay.

Unusual Paint Sale

GENESEE

OUTSIDE HOUSE PAINT
INTERIOR GLOSS PAINT
FLAT WALL PAINT
FLOOR AND DECK PAINT

1 Gallon \$1.98 1/2 Gallon \$1.15 1/4 Gallon 65c

Sign owners will find our weekly or monthly payment plan helpful and convenient. No interest charged.

CLARK PAINT
OIL and GLASS
DISTRIBUTORS
71-73 STATE STREET

The Ideal Drink for Summer

And for Health is a Glass of Wegman's Milk

Science has proved that milk is the most perfect food for all the parts of the body. It contains all the necessary minerals and it does more for the body than any other food - and more cheaply too. This summer - drink milk - for health's sake.

WEGMAN DAIRY
465 CHILI AVE. Phone: GEN. 5355

REPAIR YOUR FURNACE

Or Install A New One NOW

We have repair parts for just about every furnace - or stove - sold in Rochester in the last 50 years, including original patterns for AXIAL EMPIRE and BERMODA FURNACES.

Expert Workmanship... Our Written Guarantee Is Your Protection

FREE ESTIMATES - EASY TERMS

Call: MA-N 238

SIEBERTS
ST. PAUL ANDREWS ST.
FREE PARKING ALL DAY OPEN EVENINGS

As A Woman Sees A Home

PLANNING YOUR NEW KITCHEN

By DOROTHY CASTLE
Catholic Courier Home Service Editor

Since the illustrations necessary to the remainder of our material on the history of kitchen design, tracing its development from the early years of this century to the present, are not yet available we must suspend that series for at least a week. This is by no means unfortunate, for it provides us with an opportunity to discuss at least one question which seems to be uppermost in the minds of many of you COURIER housewives who write in for information and for the free consultation service which we offer. That question usually revolves about kitchen plans very similar to those of Mrs. R. D. S. of Rochester, who asks, "Exactly what happens, now that I've told you how dissatisfied we are with the old kitchen? How do you go about having us how to remodel it? How do you arrive at what you will tell us, and how far can we count on your assistance in getting what we need and helping us to see that it's properly installed?"

Well, in one way that's a large order. Mrs. R. D. S. has a question is so universal that it is answered in these columns, as well as in personal calls and interviews. Briefly the procedure is something like this:

In response to your request, the COURIER Home Service Editor calls (that's not of course, but it seems such a shame to drop the editor's "we" in this article just as it's getting a good start). We look over the general situation at first, discussing your particular needs, requirements and ambitions for your kitchen. It is usually very simple at this point to explain how proper design can, by its very nature, remedy your most outstanding problems. Nine times out of ten these are, first, inconvenient arrangement, making imperative a multitude of unnecessary and fruitless walling about; and second, insufficient work space for food preparation.

The next step is measurement of your kitchen - and of any space which it may be desirable to add to it in its new incarnation: pantries, closets, breakfast rooms, etc.). As the measurements are taken, a rough plan of your kitchen in its present state is made. Notation is made, along with them, of your wishes and requirements. If new major appliances are to be added, that too is noted, so that sizes and heights may be properly fixed for the finished plan. Now this has not been a long or painful process, has it? Yet this is all there is to it so far as taking up your time is concerned. Your COURIER call or has achieved the basis on which your individual plan must be built.

THE KITCHEN GUIDE

FOODS • EQUIPMENT • PLANS

A GOOD STEW IS ALWAYS WELCOME

A good stew, with the meat temptingly browned and tender and vegetable made more delicious by the flavor of the meat, never goes out of style or out of favor with those who know and enjoy the best in food. Mrs. S. Willson, home economist, points out:

Beef stew with dumplings is one of the most substantial and appetizing of stews.

Beef Stew with Dumplings
2 pounds beef neck or shank
2 tablespoons fat
2 tablespoons lard
small onion
6 small carrots
2 cups peas
Salt and pepper

Have beef cut into 1-inch cubes. Shank, neck or flank are good cuts for this purpose. Dredge the cubes with flour and brown in hot lard. Season with salt and pepper. Cover with hot water. Cover tightly and cook slowly until done, about two hours. Forty-five minutes before serving add whole onions, carrots and peas. Fifteen minutes before serving drop dumplings on top of the vegetables. Cover the kettle tightly and cook without removing the cover for fifteen minutes.

Try frosty white walls or loosely woven textured fabrics looped through big rings for clever curtaining. Either give you that sweeping line that lends a flavor of luxury to the simplest materials, and you can buy these curtains right already made.

NOODLE RING WITH CHEESE

Drop into boiling water one package noodles, broken in small pieces. Cook 15 minutes. Drain. Beat 4 eggs until light, add 1 teaspoon salt, few drops onion juice, 1/2 cup grated cheese and 1/4 cup milk. Beat lightly an egg, add noodles. Blend with fork all ingredients and turn into a buttered mold. Set in pan of boiling water and bake for over 35 minutes. Turn from mold and fill center with creamed salmon, tuna fish or crab meat.

APPLE CHARLOTTE RUSSSE

Try this for dessert at a children's party. Remove the seeds from slices of white or wheat bread. Cut slices into thirds, spread with softened butter and roll in sugar and cinnamon, mixed 1/2 teaspoon cinnamon to 1/2 cup sugar. Toast quickly in broiler. Arrange 4 or 5 cinnamon sticks in sherbet glass and fill center with apple sauce. Top with a toasted marshmallow and serve.

Varnished Floors

To prepare a good floor oil for rubbing varnished floors, mix one part boiled linseed oil with three parts turpentine. In using the oil on the floors use only enough to moisten the cloth or rag. If any oil remains on the floor it will catch dust and darken the wood.

Cleaning Furniture

To clean dust and dirt from a bird's-eye maple dresser, wash with thick suds of any pure soap. Follow immediately with a clean cloth dampened with clear water, and rub dry with chemocel.

For Rochester's 300 June Brides

Dozens of Never-to-be-Forgotten

ELECTRICAL WEDDING GIFTS!

Last year, 2,595 of our Rochester misses became Mrs., 279 of them in June alone. We hope there'll be lots of brides (this June at least 300) and more and more every month of the year. We hope, too, that every one of them will be lucky enough to receive beautiful, useful gifts like these. They help make housekeeping loads of fun and keep it that way for ever and ever.

No burnt offerings for breakfast. This handy-toaster "pop up" or "knees warm" crisp, golden brown toast. As low as \$7.99

Keep the wrinkles out of her brows with this light-weight, faster-heating automatic iron. Fabric selector heat control. As low as \$9.95

Cakes like Mother made are easy when an Electric Mixer does the mixing, creaming, whipping and beating for you. As low as \$23.75

Makes her coffee delicious. All-chromium Coffee Maker. Tastes of automatic, but not of it. As low as \$16.99. Complete service call \$2.50.

ROCHESTER GAS & ELECTRIC Corporation
For trouble and service call Telephone Main 3500