

WHERE TO BUY
A Listing of Preferred Business Firms

SPECIAL FOR LENT
ROSARIES
From \$1.00 up
HUMBERT JEWELERS
8 NORTH ST.
WATCH—CLOCK Repairing

Stone 5424 Res. Char. 513-J
DAVISON BROS.
Auto Tops and Side Curtains
Custom Made of Fibre Seal Covers
Upholstery - Repairing - Cleaning
Distributors of Rubber Cements and Plastics
UPHOLSTERY TO MATCH ANY CAR
174 Griffith St. Rochester, N. Y.

NATURAL TALK ROCK Sparkling Spring Water and TALK ROCK GINGER ALE
H. S. JENNER
58 Windsor St. Phone Stone 1588
Rochester, N. Y.

Bartholomay
MILK — CREAM
Phone — MAIN 6520

TownTalk Bakery Inc.
601-607 Fullman Avenue
GLEN. 6773
Every Day We Go Your Way

ROOFING and SHEET METAL WORK
Our courteous attention and expert advice are yours at your disposal.
WM. J. MEYER CO., INC.
CONTRACTORS
Stone 133 103 Giffen St.

TIRE REPAIR SPECIALIST
Let Us Rebuild Your Worn Tires
Most Modern Equipment
Neidinger Tire Rebuilder
Formerly 158 Broad St.
NOW—1 MONROE AVE.
"Where Quality Predominates"

Vincent F. Barker
Portrait and Business Photography
Frames and Framing
17 Gibbs St. Phone Stone 247
ROCHESTER, N. Y.

CITY DELIVERY STORAGE CORP.
"Caring and Delivery Engineers"
193 SCIO ST. STONE 905

C. H. MORSE & SON
RUBBER STAMPS
NOTARY CORPORATION SEALS
21 No. Water St. Main 1291
Rochester, N. Y.

Head-Miller, Inc.
Foods and Beverages
Rochester, N. Y.

ZIPPER BINDERS
We've a grand assortment of those handy cases, in which to carry your important papers and plans.
HEINRICH - SEIBOLD STATIONERY CO.
11 Exchange St. Main 2493 Main 5282

FLOORS
Hardwood Laid Old Floors Refinished
Asphalt Tile, Cork Tile, Rubber Tile, Cellulose Wood Block
For Estimate Call GIN. 4675
Genesse Flooring Co.
J. DeCLICQ 178 Ellicott St.

HOME PLANNING Economical Meals — Planned Kitchens — Know Your Foods — Modernizing Ideas

New Egg Dishes For Any Meal
Economical With Present Prices

Apparently the chickens have started back to work, suspended their set-down strike and turned to production again. The prices of eggs on the market these days would lead us to believe that eggs are plentiful and they could not be much cheaper.

SCRAMBLED EGGS WITH VEAL KIDNEY
Melt 3 tablespoons shortening in a saucpan, break in 8 eggs, add salt, pepper, a dash of nutmeg and cook over a very slow fire, stirring well from the bottom with a wooden spoon. Take them quickly off the fire before they are too well done and garnish with small pieces of sauted veal kidney.

CORN OMELET
2 eggs 1/2 cup whole grain corn chopped finely 1/2 cup milk 1/2 tsp. salt 1/2 tsp. of shortening
Beat the yolks of the eggs and add the corn, salt, pepper and cream. old in stiffly beaten whites of eggs. Melt shortening in a small frying pan and pour in the mixture. Cook slowly over low heat. When the omelet is brown on the bottom place the pan in a moderate oven until firm on the top. Remove from the oven. Fold and serve at once.

SCRAMBLED EGGS WITH BREAD CUBES
Scout 1 cup bread cubes in 3 tablespoons of butter. Beat together 4 eggs, 1/2 teaspoon salt, dash of pepper and 1/2 cup of milk. Turn into the skillet with the bread cubes. Scramble over low heat, stirring constantly scraping from the bottom and sides of the skillet. Do not cook them too long or they will become watery.

EGGS FROMAGE
Beat 4 eggs slightly and add 2 tablespoons top milk. I can deviled ham, 1 cup grated American cheese and 1/2 teaspoon Worcestershire sauce. Cook over hot water until thick, stirring constantly. Serve on hot buttered toast or on toasted English muffins, sprinkle with paprika and garnish with parsley.

CRISS-CROSS OMELET
Arrange 8 strips of bacon in 2 layers overlapping in the skillet. Place in moderate oven and bake 10 minutes. Pour off excess fat. Beat 6 egg yolks, 1 teaspoon salt and 2 tablespoons water added until light and lemon colored old in 6 egg whites which have been beaten until stiff. Pour omelet mixture over the bacon, cook slowly in oven until all the water has evaporated. Fold omelet and place on a hot platter.

Soup, with Flavor A Satisfying Dish
Soup is such a satisfying dish—particularly if it has an individual and unique flavor. The soups suggested here are unusual and hence furnish a particular appeal to the appetite.

SAUERKRAUT-TOMATO BOULLION
Combine equal parts of tomato and sauerkraut juice. Place in a saucepan and bring to a boil. Add additional salt to taste if desired. Serve in hot bouillon cups. Small crackers which contain caraway or poppy seeds or cheese are especially delicious with this bouillon.

ASPARAGUS SOUP
Take a puree of cooked asparagus, reserving tips, and combine with an equal amount of thin white sauce made of 1 cup of evaporated milk and 1 cup canned chicken broth. Use tips in the soup.

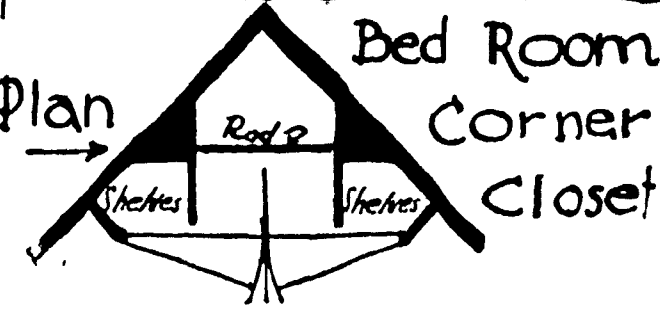
VEAL BROTH
Knuckle of veal 2 qt. cold water 2 onions Salt and pepper
Put veal in water. Let stand for half an hour. Bring slowly to a boil. Simmer, add salt and pepper, onions and carrots and turnip. Simmer 3 hours or more. Strain and remove fat.

EGG-DROP SOUP
Have well-seasoned meat broth either beef or chicken, boiling slowly. Beat 4 eggs fairly stiff with a little salt and pepper. Drop the eggs into the broth, a teaspoon at a time. Serve at once.

Breakfast Bar Is Convenient
Recurring breakfast-getting sometimes annoys the housewife whose family breakfasts at different times, and it is in homes of this type that "breakfast bars" are most popular.

"Breakfast bars" are now being built into many new homes, but that does not mean that existing homes cannot have the convenience they afford. One may be added to the kitchen or breakfast room of any home at little expense. A flat-topped surface a little higher than the average table, liberally supplied with electric outlets, is the essential piece and may be built into the room with funds obtainable from qualified lending institutions under the Modernization Credit Plan of the Federal Housing Administration. Special stools and such electrical appliances as grills, waffle irons, and coffee percolators complete the bar's necessary accessories.

ADDING CLOSET SPACE FOR BEDROOM



Materials Used For Work Tops
In Kitchen Must Be Durable

By DOROTHY CASTLE
Courtier Kitchen and Re-modelling Consultant

Time and again in creating workable, scientific kitchens for either new houses or old, I discover that Mrs. Average Woman doesn't have any dependable notion of the comparative value of the various materials which can be used as working surfaces. Neither is she well informed as to the merits of the several wall treatments generally used in today's kitchen.

Wall surfaces in the new easy-on-the-feet kitchens must naturally be both practical and pleasing to look upon. Like work tops, they are used these days in a considerable variety of approved materials. There is the good old standby, painted plaster. Like most installations in so busy a center as the kitchen, however, low first cost is practically a guarantee of future replacement costs; so some smart people have been using wall linoleum. Grease and dirt do not affect this substance, and once it's on, it will clean and properly installed it will be the admiration of your great-grandchildren. Unlike ceramic tile and even some of its imitations, wall linoleum has a warm appearance and is not expensive to buy or to install.

Decorative opaque glass in an enchanting array of colors is now urged with much merit as a suitable kitchen wall surface. Of course, it comes a trifle high, compared to wall linoleum or synthetic tiles, but it's a mighty pretty!

Dark roofs seem to be lower to the ground if the roof is too high for the length of the house, paint it a dark color.

If the house has shutters, paint the shutters of the upper story the same color as the roof. This will visually bring the roof line lower, as the eye will travel to the bottom of the dark shutters. Paint the remaining shutters the color of the body of the house.

Dark corners can make a small house seem larger if being painted on their faces the color of the side wall of the house. This will carry the side, all color up into the roof and give the appearance of additional height.

Where window openings of different sizes disturb the unity of the house's over-all shape, the treatment is painting the openings the same color as the body of the house.

Where a color accent is needed to lower the roof line or draw attention to the first floor, shutters help to achieve the result.

If shuttered windows are of various sizes, remove all smaller shutters and leave only those of the larger and more uniform size.

What Do You Know About Your Foods?

This is the second of a series of articles telling about the things we eat or use in cooking every day. Their production, their food values and their everyday uses. This fourth article on Kitchen hints was gleaned from various sources.

Planned Paint Job Alters Home Lines

A new coat of paint properly selected and applied, can be one of the most effective of all modernization devices. Careful choice of shades can bring to the house effects not thought possible by the average home owner.

In modernizing a home, painting should be high on the list of improvements. This is one of the numerous items of modernization which may be financed under the Modernization Credit Plan of the Federal Housing Administration.

Among the unusual effects obtainable from painting devised by the Council of Paint Styling, are:

Lower Roof Line
Dark roofs seem to be lower to the ground if the roof is too high for the length of the house, paint it a dark color.

If the house has shutters, paint the shutters of the upper story the same color as the roof. This will visually bring the roof line lower, as the eye will travel to the bottom of the dark shutters. Paint the remaining shutters the color of the body of the house.

Dark corners can make a small house seem larger if being painted on their faces the color of the side wall of the house. This will carry the side, all color up into the roof and give the appearance of additional height.

Where window openings of different sizes disturb the unity of the house's over-all shape, the treatment is painting the openings the same color as the body of the house.

Schools of Cookery Watch the CATHOLIC COURIER for announcements for the continuation of the "Schools of Cookery"—

MAIN 6811
BEN MILLER
Devco Paints, Glass Hardware, Crockery, Plumbing and Electrical Supplies
551-553-555 STATE STREET
Rochester, N. Y.

A Few Uses for QUICK-DRYING Enamel
LOWE BROTHERS QUICK-DRYING ENAMEL is ideal for decorating any surface when new beauty and durability in striking colors are desired. It dries without brush marks and leaves a long lasting, smooth, glossy finish that's ready for use overnight. One coat is probably enough. Comes in a complete range of beautiful, modern colors.
ROCHESTER'S MOST COMPLETE PAINT STORE
Barnard, Porter & Remington
9, 11, 13 NORTH WATER STREET—MAIN 518

LET'S TRY A TON OF 'blue coal'
This Week
EVERYONE SAYS: "YOU GET MORE FOR YOUR MONEY"

HOME owners all over town are enjoying better heat and saving money, too, with blue coal. And so would you. This highest quality, long-burning Pennsylvania hard coal is especially prepared to give you the maximum in home comfort. Every careful laboratory tested for purity and uniformity always before it leaves the mines. And it's always selected blue to guarantee its quality.

'blue coal' CASH PRICES
(Shovel Oil)
\$11.95 Per Ton
EGG, NUT STOVE SIZES
PEA COAL . \$9.95
Prices Subject To Change Without Notice.

TUNE IN "The Shadow" Sundays 2:00 P. M. Musical Clock Weekdays 9:15 A. M. WHEC

BETTER SIGHT SALE ENDS Saturday

Standardized Interior Partitions Available

If you are planning interior remodeling (and this is an excellent time to do it), make an appointment for a personal interview by calling the COURIER offices, Stone 1126. We'll be glad to help with your particular problems.

Such partitions frequently come in two heights—ft., 4 in. and 4 ft., 7 in. Each is made up of three units with the space between the top of the unit and the ceiling filled with a sound-proof transom. All units are 36 inches wide. Individual panels are 2 1/2 in. thick, built on frames with two 1/2-inch layers of acoustical material on the inner side, and are embraced with two 3/4-inch layers of plywood. Doors are sound-proof with the base panel water and mop-proof.

Partitions of this type are easily assembled and made rigid with screws and full length posts of special construction. Wiring goes through the end posts at either the upper corners or the base.

Remodeling with these partitions is not only convenient but economical.

Helps Clean Windows
Add a little kerosene to the water for washing windows. It will cut the dirt and clean them in very short order.

Ivory Frosting
IVORY FROSTING
2 egg whites, 2 tablespoons unbleached sugar, 1/4 cup brown sugar (1 teaspoon 1/4 cup granulated vanilla sugar)
Combine egg whites, sugars, and water in top of double boiler beating with rotary egg beater until thoroughly mixed. Place over rapidly boiling water, beat constantly with rotary egg beater and cook 7 minutes or until frosting will stand in peaks. Remove from boiling water and beat until thick enough to spread.

Tickling sewed on the inner sides of the corners of feather pillow coverings reinforces them.

Ham Steak in Orange Sauce
1 center cut ham 1 cup boiling water 1/2 slice of ham 1 orange, juice and 1/2 cup sugar 1/2 cup flour 1/2 cup butter 1 tablespoon flour 1/2 cup brown sugar 1/2 cup butter 1/2 cup brown sugar 1/2 cup butter

Preheat broiler pan 5 to 10 minutes. Have ham cut 1 inch thick. Score fat around edges of the steak and place on broiler pan so that the meat is 2 inches from the heat. Broil 8-10 minutes, turn and complete the broiling (about 8 minutes longer). Mix sugar and flour, add boiling water and simmer for 5 minutes. Add orange juice, rind, and butter. Place ham on heated platter and pour sauce over it. Serve immediately.

Shady jokes certainly darken the intellect.

WALLAMP
COMPLETE WITH BULB
ONLY \$1.99
Easy to hang up on wall over bed, easy chairs, in kitchen and in hard-to-light corners. Gives soft, glare-free light. Handsome ivory bracket with "Stay-Straight" hanger to prevent tipping. Ivory parchment shade to harmonize with any color scheme. You'll want one for every room in the house. Price goes back up on Saturday.

MODEL RB 566

ROCHESTER GAS & ELECTRIC CORPORATION
For trouble and service call Telephone Main 2200