

STORIES SPORTS GAMES

The BOYS and GIRLS PAGE

CRAFTS JOKES PUZZLES

PUZZLE COLUMN

Young musicians will be able to get a fast start on this picture puzzle, but it shouldn't be hard for you, even if you don't know one note from another.



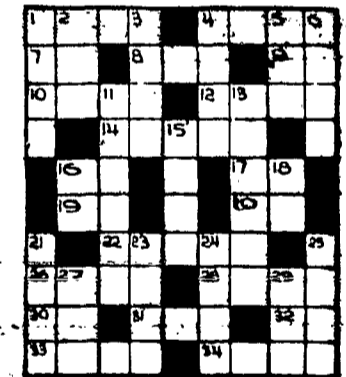
Musical terms are used in our word chain this week. Be sure that you change only one letter at a time, and that each word is a genuine "dictionary" word.

Change CLEF to FLAT in four moves.

Change NOTE to TUNE in three moves.

If you are going to learn music, you must have a teacher. But would you believe that you can make at least 35 words of four or more letters from the letters in TEACHER? The puzzle editor found that many in a few minutes. See if you can find them all—or more.

Behind a kind of modern music and real part of an airplane. Behind a musical term and get an irritator.

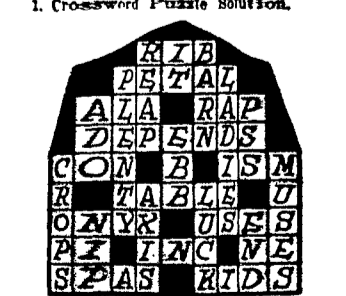


The Definitions:

- HORIZONTAL
1. Davenport
2. Magnitude
3. Toward the top
4. Employ
5. Used with "either"
6. Remainder
7. Gas used in signs
8. Straggles or ropes
9. Sensitive (Abbr.)
10. Toward
11. You and I
12. Example (Abbr.)
13. A trait
14. The highest point
15. To leave out
16. Greek letter "pi"
17. Used with "neither"
18. Concerning (Abbr.)
19. Without life
20. Pulled

- VERTICAL
1. Certain
2. Opera (Portic)
3. Sincere or
4. To dispassion
5. Place where animals are kept
6. Sea eagles
7. A shrill cry
8. To play hysterically
9. Point of the compass (Abbr.)
10. Breast of burden
11. A holding of playing cards
12. To be undecided
13. A problem
14. To dwell shrewdly
15. Hint
16. Anger

ANSWERS TO LAST WEEK'S PUZZLES



1. The diamond is K was word, harvest, news, H, S, E, and F. 2. FARM - farm - hand - HAND. 3. WOOD - wood - worm - BORN. 4. Harrow, table, pickback and more.

The Pirate of Refuge Island

By H. T. GARRICK

Harvey Corey who tells the story of his adventures that he has always treasured in private. He has been on an island, and he has been rescued by the pirates. He has been rescued by the pirates. He has been rescued by the pirates.



Now go on with the story. Uncle Ed swung the boat to the dock with an expert hand and we piled out to meet all these people whom we had never seen before.

Mr. Parsons was in the kitchen. He was a real guy. He was still a bit weak from being sick the night before. He was still a bit weak from being sick the night before.

When the highest part of the day was over, the sun was high and the air was hot. The sun was high and the air was hot. The sun was high and the air was hot.

The police have asked me to get out of the country. All the going boys are being sent out. The police have asked me to get out of the country.

Princess Lip and Prince Pickle have been turned to stone. The only thing that will bring them back to life is the Snow-Glass. The Snow-Glass is a magic glass that will bring them back to life.

It is a question of who reaches the Snow-Glass first. We are on the back of the Talking Pencil and have to make the descent in several jumps. The Hermit has shown Snarl a short cut up a tunnel in the mountain.



Perhaps we were foolish to take time out to rest, as every moment counts, but the food was so inviting and we have been under such a severe strain that rest will do us good. I wonder how Snarl is progressing.

Mother Hubbard's Cupboard

By Louise Erice Bell

Mother Hubbard's cupboard was never bare. No indeed! You see it was got at all like the cupboard in the nursery home. It had a real haunt of the pirates. The reason that Mother Hubbard's cupboard was never bare was because she had two little girls who liked to cook and who tried to keep something good to eat in the cupboard all the time.

Helene Hubbard was the elder of the two girls and so the job that she knew much more about cooking than did Betty. But Betty, who dearly loved to cook—though that she was a very good cook, herself hadn't Daddy Hubbard told her to make a time?

The very first thing that Helene ever baked was breakfast muffins. And these were so light as feathers, so Daddy Hubbard called them Feather Muffins.

Feather Muffins: 1 tablespoon butter, 3 tablespoons sugar, 2 eggs, 1/2 cup milk, 1/2 teaspoon baking powder. Cream butter and sugar. Beat egg and add them to the sugar mixture.

ON THE DOT: The mistress entered the kitchen hurriedly. " weren't you told to watch when the milk boiled over?" she said. "I did, ma'am," replied the maid. "It was just half past nine."

A Carolina girl narrated a photograph of a woman whose car she swiped. The result of a swapping happened. The marvel and the price of the car of the Blessed Eucharist are the same as if it was granted only once.

Have you seen any wildies to the Riddle Man lately? If you haven't, just mail your favorites to him in care of this newspaper and if they are really good ones they'll be printed with your name.

Very Queer: During a natural history lesson, the teacher asked the class to name an animal peculiar to the United States. The camel, said Henry. "That's not a native of this country," said the teacher. "I know it isn't," replied Henry. "That's why it would be peculiar."

Poser: The added weight of the water puts the cord in a position on the radio that it is not in on a prize fight broadcast. When the bell sounds for the first round, the referee says, "There is a fire, and give the word 'K' and 'K'." As the referee utters the word "K" which is connected to the patented holder turns the star of corn so that the word "K" is not in the next round. He kept his hand from playing a piano solo or to play your gennals.

Poser: The added weight of the water puts the cord in a position on the radio that it is not in on a prize fight broadcast. When the bell sounds for the first round, the referee says, "There is a fire, and give the word 'K' and 'K'." As the referee utters the word "K" which is connected to the patented holder turns the star of corn so that the word "K" is not in the next round. He kept his hand from playing a piano solo or to play your gennals.

Perhaps we were foolish to take time out to rest, as every moment counts, but the food was so inviting and we have been under such a severe strain that rest will do us good. I wonder how Snarl is progressing.

Clever Figures Can Be Fashioned With Penknife and Orange Sticks

By Anna May Trimp

Several Cakes Can Be Joined to Handle Big Designs. What can it be carved in soap? Tools for soap sculpture are simple and easily obtainable. For a paring or penknife and one of two orange wood sticks are all that are necessary. The knife should have a thin, pointed blade of medium size. The sticks—such as those used in the car of the fencer's, may have a point or edge in a variety of shapes. It is convenient to carve on a small tray which will catch the shavings.

Applying the Design: The second step is to apply the design. This is done by first sketching on paper the subject chosen. The paper should be the same size as the cake of soap and the design should be played so that it will be in the center of the soap when the paper is placed over it. The design of figure is transferred to the soap by placing a piece of carbon paper the same size as the cake, on the soap and then tracing over it. The tracing should be done with a penknife, not a pencil. If it does bleed, a thin layer may be scraped off and the tracing repeated.

Carving is Started: Now the preliminary work is finished, and the real carving of the model begins. First, all the major important lines are outlined. Each high point is cut in and outlined roughly. The high points, of course, are those nearest the surface of the soap. The low points are those farther off. After completing the rough construction, carving is continued from the highest points to the lowest. When all of these have been carved and have been smoothed, it is time to start smoothing the model. The model should be smoothed with a penknife, not a pencil. If it does bleed, a thin layer may be scraped off and the tracing repeated.

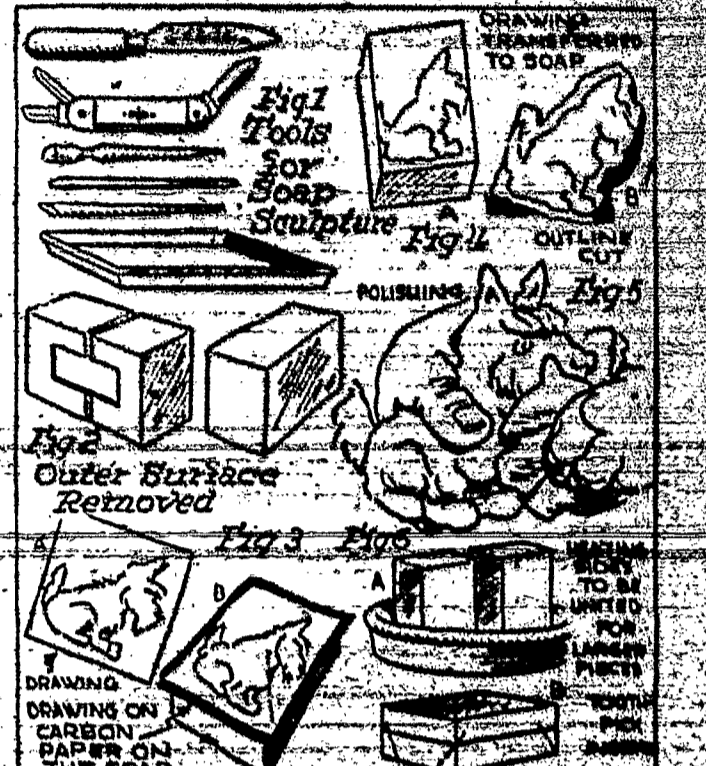
Carving is Started: Now the preliminary work is finished, and the real carving of the model begins. First, all the major important lines are outlined. Each high point is cut in and outlined roughly. The high points, of course, are those nearest the surface of the soap. The low points are those farther off. After completing the rough construction, carving is continued from the highest points to the lowest. When all of these have been carved and have been smoothed, it is time to start smoothing the model. The model should be smoothed with a penknife, not a pencil. If it does bleed, a thin layer may be scraped off and the tracing repeated.

Carving is Started: Now the preliminary work is finished, and the real carving of the model begins. First, all the major important lines are outlined. Each high point is cut in and outlined roughly. The high points, of course, are those nearest the surface of the soap. The low points are those farther off. After completing the rough construction, carving is continued from the highest points to the lowest. When all of these have been carved and have been smoothed, it is time to start smoothing the model. The model should be smoothed with a penknife, not a pencil. If it does bleed, a thin layer may be scraped off and the tracing repeated.

Carving is Started: Now the preliminary work is finished, and the real carving of the model begins. First, all the major important lines are outlined. Each high point is cut in and outlined roughly. The high points, of course, are those nearest the surface of the soap. The low points are those farther off. After completing the rough construction, carving is continued from the highest points to the lowest. When all of these have been carved and have been smoothed, it is time to start smoothing the model. The model should be smoothed with a penknife, not a pencil. If it does bleed, a thin layer may be scraped off and the tracing repeated.

Carving is Started: Now the preliminary work is finished, and the real carving of the model begins. First, all the major important lines are outlined. Each high point is cut in and outlined roughly. The high points, of course, are those nearest the surface of the soap. The low points are those farther off. After completing the rough construction, carving is continued from the highest points to the lowest. When all of these have been carved and have been smoothed, it is time to start smoothing the model. The model should be smoothed with a penknife, not a pencil. If it does bleed, a thin layer may be scraped off and the tracing repeated.

Carving is Started: Now the preliminary work is finished, and the real carving of the model begins. First, all the major important lines are outlined. Each high point is cut in and outlined roughly. The high points, of course, are those nearest the surface of the soap. The low points are those farther off. After completing the rough construction, carving is continued from the highest points to the lowest. When all of these have been carved and have been smoothed, it is time to start smoothing the model. The model should be smoothed with a penknife, not a pencil. If it does bleed, a thin layer may be scraped off and the tracing repeated.



Carving is Started: Now the preliminary work is finished, and the real carving of the model begins. First, all the major important lines are outlined. Each high point is cut in and outlined roughly. The high points, of course, are those nearest the surface of the soap. The low points are those farther off. After completing the rough construction, carving is continued from the highest points to the lowest. When all of these have been carved and have been smoothed, it is time to start smoothing the model. The model should be smoothed with a penknife, not a pencil. If it does bleed, a thin layer may be scraped off and the tracing repeated.

Carving is Started: Now the preliminary work is finished, and the real carving of the model begins. First, all the major important lines are outlined. Each high point is cut in and outlined roughly. The high points, of course, are those nearest the surface of the soap. The low points are those farther off. After completing the rough construction, carving is continued from the highest points to the lowest. When all of these have been carved and have been smoothed, it is time to start smoothing the model. The model should be smoothed with a penknife, not a pencil. If it does bleed, a thin layer may be scraped off and the tracing repeated.

Carving is Started: Now the preliminary work is finished, and the real carving of the model begins. First, all the major important lines are outlined. Each high point is cut in and outlined roughly. The high points, of course, are those nearest the surface of the soap. The low points are those farther off. After completing the rough construction, carving is continued from the highest points to the lowest. When all of these have been carved and have been smoothed, it is time to start smoothing the model. The model should be smoothed with a penknife, not a pencil. If it does bleed, a thin layer may be scraped off and the tracing repeated.

Carving is Started: Now the preliminary work is finished, and the real carving of the model begins. First, all the major important lines are outlined. Each high point is cut in and outlined roughly. The high points, of course, are those nearest the surface of the soap. The low points are those farther off. After completing the rough construction, carving is continued from the highest points to the lowest. When all of these have been carved and have been smoothed, it is time to start smoothing the model. The model should be smoothed with a penknife, not a pencil. If it does bleed, a thin layer may be scraped off and the tracing repeated.

Carving is Started: Now the preliminary work is finished, and the real carving of the model begins. First, all the major important lines are outlined. Each high point is cut in and outlined roughly. The high points, of course, are those nearest the surface of the soap. The low points are those farther off. After completing the rough construction, carving is continued from the highest points to the lowest. When all of these have been carved and have been smoothed, it is time to start smoothing the model. The model should be smoothed with a penknife, not a pencil. If it does bleed, a thin layer may be scraped off and the tracing repeated.

Carving is Started: Now the preliminary work is finished, and the real carving of the model begins. First, all the major important lines are outlined. Each high point is cut in and outlined roughly. The high points, of course, are those nearest the surface of the soap. The low points are those farther off. After completing the rough construction, carving is continued from the highest points to the lowest. When all of these have been carved and have been smoothed, it is time to start smoothing the model. The model should be smoothed with a penknife, not a pencil. If it does bleed, a thin layer may be scraped off and the tracing repeated.

Corn on the Cob Is Easy to Eat With Noodle's Latest Brainstorm

Professor M. T. Noodle's latest invention, an Automatic Roasting Ear Turner, resulted from a little accident which the eminent scientist suffered in his laboratory one morning.

One day the professor spilled water on his hip boots and was forced to work all day in his duds. As cornels the cook came in from the kitchen with a second platter of roasting ears she steps on a rotator skate which trips her and causes her to upset the fish bowl. This throws a genuine Goulashman puppy into a net. Fearing the rotator bottle to wash charged water into



As a result he developed a corn on his little toe. As he was tugging it that evening using a broad sword and to have been owned by William the Conqueror the Professor admitted at his age and remarked, "Boy but that's a sweet corn."

Suddenly he paused a great idea beginning to form in his brain. He thought of sweet corn and of the difficulties of eating roasting ears. He dashed to his laboratory and worked until dawn finally solving the little problem which we present herewith.

Princess Lip and Prince Pickle have been turned to stone. The only thing that will bring them back to life is the Snow-Glass. The Snow-Glass is a magic glass that will bring them back to life.

Perhaps we were foolish to take time out to rest, as every moment counts, but the food was so inviting and we have been under such a severe strain that rest will do us good. I wonder how Snarl is progressing.

THE ADVENTURES OF PETER PEN

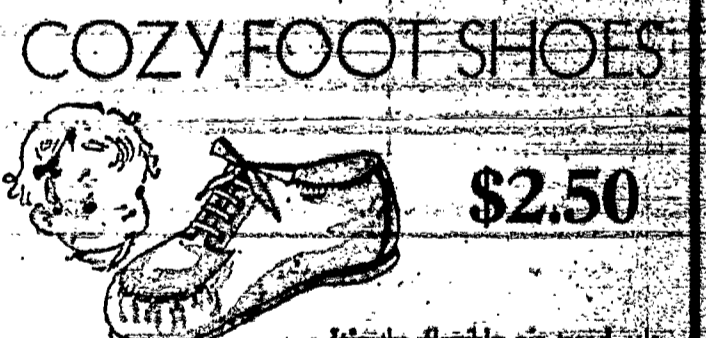


Perhaps we were foolish to take time out to rest, as every moment counts, but the food was so inviting and we have been under such a severe strain that rest will do us good. I wonder how Snarl is progressing.

Boys and Girls!

Do You like this page? Do You Want a First Prize of \$3.00 Second and Third of \$1.50 Each. Then drop us a penny card on or before Monday, September 20 giving your five reasons. Not more than ten words to state each reason. Mail to 'BOYS' and 'GIRLS' PAGE EDITOR, CATHOLIC COURIER.

COZY FOOT SHOES



It's the flexible air tread sole that is important in these shoes for infants, for they have a patented device that allows the foot to breathe at the bottom. Genuine moccasins, and plain toe blucher boots in fine grade white elk that is easily washed. Style sketched comes in sizes 3 to 10. \$2.50. Other styles in white and brown elk. Sizes 3 to 6, \$2.75; 6 1/2 to 8, \$3.25.

Exclusive With Sibley's Children's Shoe Department

For First Cool Days... Knit Creepers \$1.95. That extra warmth to keep off the fall chill is provided prettily, comfortably, and economically in a little knit creeper. One and two-piece styles in lovely soft wool to keep him cozy all day.

Sibley, Lindsay & Co.