

TOURS TO EUROPE
 \$295.00 Upward
 STUDENT TOURS—CABIN TOURS—
 DE LUXE TOURS
UNION TRUST COMPANY
 Travel Service Department
 EAST AVE. OFFICE
 30 EAST AVENUE ROCHESTER, N. Y.
 TELEPHONE MAIN 7100

UNIVERSITY ESTATES
 —Opposite new St. Ann's Church—You can build your new home here with complete assurance of rapid growth and attractive surroundings. We will gladly furnish plans, specifications, and personal supervision until you move in.
MR. RAINEAR, with E. L. Cox, Inc.
 215 Powers Building MAIN 366

High tested-Cream and Milk gives it
 "ITS" Quality
MOTHER HUBBARD
 "BUTTER"
 After trying it you will find the difference.
 Ask for it at all
 QUALITY Grocery Stores
H. H. HUBBARD BUTTER AND EGG CO.
 102 Arnett Blvd. Gen. 1045, 1046, 1047, 1048

RELIABLE . . . PROMPT . . . ECONOMICAL
SAM GOTTRY CARTING CO.
 Offices: Powers Arcade and 47 Parkway. Phone Main 1412.

Subscribe For The Catholic Courier

Our Retail Plumbing Department
 is at the service of those desiring to purchase and install their own Plumbing Supplies and Accessories.
Barr & Creelman Co.
 74 Exchange Street
 Plumbing and Heating Materials Since 1880
 Ask for our catalogue which is fully illustrated and contains attractive prices

Safe Clean Economical
ANTHRACITE COAL
Edelman Coal Company
 88 PORTLAND AVENUE
 STONE 578
D. & H. Anthracite Makes Warm Friends

SANITATION OUR "MOTTO"
FAMILY SERVICE OUR SPECIALTY
 Everything Beautifully White and Fresh
 OUR SERVICES:
 WET WASH—MACHINE IRONED—HAND FINISHED
 WHITE LINEN SUPPLY LAUNDRY
 427 MAPLE STREET
 Call GENESEE 5990-5991 DELIVERY SERVICE

ANTHONY LINK'S SONS
 CARPENTERS and GENERAL CONTRACTORS
 OFFICE AND MILL, (rear) 616 NORTH GOODMAN STREET
 REMODELING A SPECIALTY
 Phone Culver 3578 Rochester, N. Y.
 Antony Link, Jr., 207 Lux St. Albert Link, Cliffdale Park

WILLIAM J. MEYER CO., Inc.
 Roofing and Sheet Metal Contractors
 103 Griffith Street Stone 133

WHITMORE, RAUBER & VICINUS
 GENERAL CONTRACTORS
 Dealers in Builders' Supplies—Sand and Gravel
 51 GRIFFITH ST. MAIN 180

FATHER DAN'S COLUMN
 (Continued from Page Two)

From An Old Friend
 He stopped at the postoffice one summer's eve and got his mail. There was a letter from Johnny Toole, from California, dear old schoolmate. Bob read it as he walked homeward, holding the letter before him and occasionally turning blindly into passers-by. Johnny was profuse in describing his own happiness. "This Southern California is a little hunk of Heaven, job, and I don't mind saying I am happy and rich. Got two of the sweetest kids. Junior is as bright as Jackie Coogan, and sister will knock them all dead in about 10 years. I have been nominated for Congress, and when I come out for dog in the November elections I will sweep down in Washington with an 'Honorable' before my political name like Fritz Mahoney. That's a laugh."
 While Bob ate his evening meal a messenger brought this telegram from Johnny Toole's wife: "John and Junior killed instantly today in auto accident. Sister and aunt survive. Thoughts went through Bob's mind: 'Bright as Jackie Coogan—knock 'em dead in ten years—Congress in the Fall.' 'Poor old Jack,' he mused, 'such is life.'"

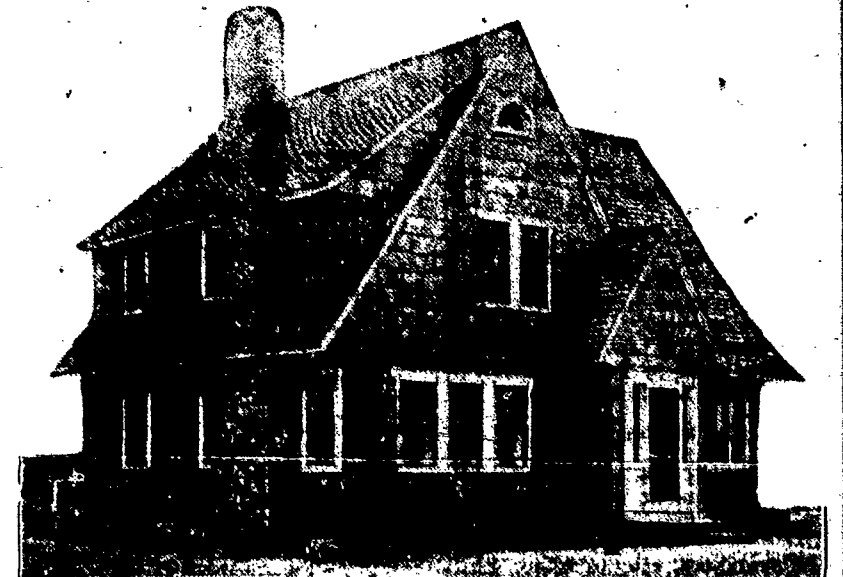
A New Life Opened
 That evening he called on the parish priest. It was too late to study for the priesthood, would take too many years, the priest told him, but had he ever thought of giving his life to God as a Christian missionary brother? In the religious life there was need of men of all trades, plumbers, tailors, carpenters, electricians—all might consecrate their skill to God. The confessor must have a confessional, the priest an altar, the community a thousand and one things that hammer and nails can make. In this hidden way the first great lay brother, St. Joseph, had contributed a desirable share in the work of our Redemption. Bob had not thought of that, but he would now.

From an issue of "Catholic Missions" printed recently, we learn of the martyrdom of Brother Robert Kelly, who had entered the religious life at 25, had built with his own poor hands a hundred churches for the pauper, three hundred altars, no one knows how many confessionals and baptisimals, and had preached to many souls to God by his pious counsels that it would take an angel from Heaven to number all his martyrdoms in far-off Malacca, the scene of the labors of St. Francis, was an irretrievable loss, the paper said, but his life had been a wonderful air for souls.

Green Popular Color for Plumbing Fixtures
 In the last twelve years the American public has changed completely its attitude toward color in the home. Twenty years ago one of the largest manufacturers of plumbing equipment put some colored porcelain fixtures on the market. They wouldn't sell. The public wasn't ready for color. Today this company and other companies making colored enamel ware and vitreous china are reporting an increase of 200 per cent in the sales of colored fixtures in 1929 over 1928.
 The most popular colors for bathroom fixtures and kitchen sinks are green, lavender, orchid, ivory and brown. Artists explain the popularity of green by pointing to the fact that it is a cool color.
 Color in vitreous china and enamel is obtained by the use of metallic pigments. It is required that pigments and oxides experiments to find pigments that would withstand the heat of 2,200 degrees in the firing of vitreous china and the somewhat lesser heat necessary for the baking of porcelain enamel on cast iron.
 These pigments change color completely in the firing. Furthermore, the firing of the china and the firing of the enamel on iron are accomplished by different processes. This makes it difficult, but not impossible, for manufacturers to obtain the same shade of color in the bath, which is enameled, as in the water-closet which must be vitreous china, or in the lavatory, which may be vitreous china or enamel.
 Because of this difficulty in matching colors in fixtures made by different processes, most plumbing contractors will advise the home-owner that all of the colored fixtures he selects for his home should be made by the same manufacturer. It is now possible to buy a complete bathroom ensemble, consisting of a built-in tub, a vitreous china lavatory, a dressing table, a nylon jet closet, a dental lavatory, towel bars, and recessed soap dishes—all with perfectly matching colors.
 While a large bathroom may permit the use of contrasting colors, in a small bathroom, good taste would dictate that all fixtures be of the same color. Sometimes lights will create the effect of unmatched fixtures. For instance, there is usually a strong light over the lavatory and a weak light near the tub. While discrepancies in lighting may cause an apparent difference in color values, an ideal lighting system would show a perfect matching of color.

Vapor Heating System Helps Cut Fuel Bills
 There are three types of radiator heating systems in general use in residence construction today. Hot water, steam, and vapor.
 Water is an ideal medium for conveying heat because it will supply a comfortable even heat that will not rob the air of its natural humidity. The system is in operation and flexible—that is, the temperature of the water may be varied to suit outdoor conditions.
 All other types of radiator heating systems utilize steam as the heat conveying medium. While the one-pipe steam system is the cheapest of all radiator heating systems, in recent years there has been a growing tendency, especially in new residence construction, toward the use of the vapor system.
 A vapor heating system is a two-pipe steam heating system with the air eliminated from the pipes and radiators by means of an air eliminator in the basement and air traps at every radiator. It is called a vapor system because it utilizes steam at low pressure, at times operating under a partial vacuum. For this reason the water in the boiler of a vapor system has a very low boiling point—sometimes as low as 125 degrees.
 The low boiling point of the water is one reason for the economy of fuel in a vapor system. The other reason why a vapor system is economical is the fact that with the air eliminated from the radiators only a small amount of steam pressure is necessary to force the steam into the radiators.
 The fact that the air, once eliminated from the radiators, is prevented from re-entering accounts for the flexibility and responsiveness of the system.
 Unlike the single-pipe steam job, the vapor system allows easy control of radiator temperature by means of the valves. Most vapor systems are installed with valves which may be opened one-quarter, one-half, three-quarters or full as the occasion demands. The vapor system is quiet in its operation. There is no noise or odor from air valves because the air is eliminated from the system in the basement.
 Any type of steam heating system, whether it be a one-pipe steam system, a vapor, or a vacuum system, requires less radiation than a hot water system. Heating contractors ordinarily figure about 60 per cent more radiation for a hot water job than for a steam job.
 While this is a saving in the installation cost, the thoughtful home-owner

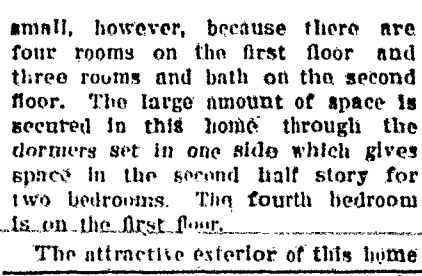
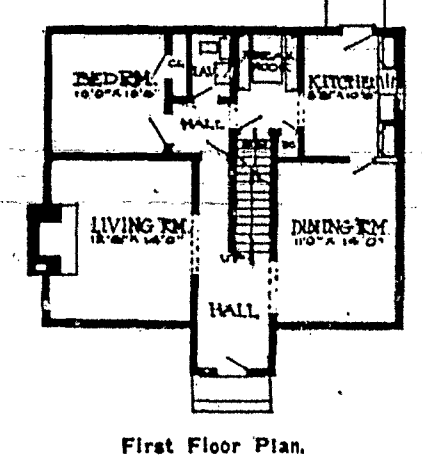
Delightful French Type Shingle Home Has an Appeal of Its Own



A delightful treatment of roof lines is one of the most pleasing features of this home but we cannot overlook the wide laid shingles, the neat shutters, the entrance light, brick steps, all the details which join to form a pleasing whole.

By W. A. RADFORD
 Mr. William A. Radford will answer questions and give advice FREE OF COST on all subjects pertaining to practical home building, for the readers of this paper. On account of his wide experience as editor, author and manufacturer, he is, without doubt, the highest authority on all these subjects. Address all inquiries to William A. Radford, No. 407 South Dearborn Street, Chicago, Ill., and only inclose two-cent stamp for reply.

A single glance at this shingled home will endear it to prospective home owners. It is of the cottage type and looks like a comfortable small house because of the lines the architect has given the roof. It is not



each are shown on the accompanying floor plans. It will be noted that the exterior is similar in a way to the usual Colonial layout of rooms. The wide entrance hall has the living room on one side and the dining room on the other with the stairs to the second floor running out of it. This hall leads back to the bedroom at the end of which is a lavatory. Back of the dining room is the kitchen with a breakfast nook adjoining. As all of these rooms are thus connected the floor plan makes the work of caring for the house comparatively easy.
 The three bedrooms upstairs are light and airy and one of them is unusually large, being 10 feet by 13 feet 6 inches.
 A basement is provided for housing the heating plant and for storage.

will not overlook the fact that the larger amount of radiation in a hot water system will tend to give off a more temperate heat since the radiators are not so hot, the velocity of the air currents is less than in the case of a steam heating system.
 With reference to installation costs, systems are rated in the following order by heating contractors: A one-pipe steam job is the cheapest. A vapor system costs about 25 per cent more than a one-pipe steam system and a hot water system costs about 85 per cent more than a one-pipe steam system.

Wood Trim in Darker Shade Than Room Wall
 Two schemes are in general use for the finishing of woodwork, either as a part of the wall or as a part of the trim, the former is in most cases preferable. As a part of the wall it should be a shade or two darker of the same color as the wall. This assures harmony and good taste, and gives that restful effect of space so much to be desired.
 In the second method the woodwork takes the color of the furniture, or, perhaps, only the doors and permanent furniture are given the furniture color, while baseboards, cornices and "standing trim" have the wall color. This method may be successfully used in large rooms, or in rooms that have a relatively small amount of woodwork, so that it does not distract the attention from the sum total of the room.
 Finish for interior woodwork may be gloss, semigloss or dull. The high gloss is most easily kept clean, but does not usually please the eye as well as a dull finish. The flat finishes are much more artistic, and when properly done are quite as serviceable. There is now on the market an oil which produces distinctive effects in eggshell and satin finishes without laborious rubbing or even stipling and which is washable and very durable.

Lacquer Is Gaining Rapidly in Favor
 Lacquer is a finish rapidly gaining in favor. The material itself is a rather complicated chemical combination of gun cotton, solvents, drier and pigment, all of which, when combined, give a quick-drying, opaque finish with a beauty all its own. A big asset of lacquer is its quick-drying property, but the colors also have a certain richness of tone and the finish a luster which cannot be duplicated exactly by any other type of finish.
 Cedarholme, once the home of Charles Dickens in London, is being used temporarily as a Catholic Church. It is planned to build a permanent church on the grounds.
\$5,000 To Catholic U.
 Washington, April 4.—A bequest of \$5,000 is made to the Catholic University of America in the will of the late Michael F. McDonough, of Philadelphia.

WEST SIDE FLORIST
 GEN. 6974
Gould FLORIST
 OPPOSITE ST. MARY'S HOSPITAL

ZWEIGLE BROS.
 Sausage Manufacturer
 DELIVERED DAILY TO MARKETS, GROCERIES AND RESTAURANTS THROUGH
 Established 1889

Attempt To Burn Catholic School
 (By N.C.W.C. News Service)
 (Cincinnati, April 4.—Police are seeking the persons responsible for an incendiary fire in St. Philomena School, which was extinguished with comparatively little damage only because the pastor of the parish, the Rev. Charles J. Kipper, saw the smoke issuing from the building and turned in a fire alarm.
 The fire originated in two closets on the third floor and was declared the work of a firebug because the closets are separated by a corridor, and fire could not have started in both at the same time. Kerosene was found in the hall, and was said to have been used to start the blaze. Damage was \$3,000.

Bertholomew
 CREAM TOP MILK

Pope Pius Loses His Only Sister
 Vatican City, April 4.—Donna Maria Sarto, only surviving sister of Pope Pius XI, died here Sunday. She had been ill for several weeks.
 Donna Maria accompanied her brother on many of his pastoral missions before his election as Pope in 1929. Recently she has lived in a small apartment overlooking St. Peter's Square.

E. H. Knapp & Son
 ROOFING
 HEATING-VENTILATING
 124-126 South Ave. Phone 187

D. M. O'CONNOR
 PLUMBING AND HEATING
 CONTRACTOR
 Authorized Agent—EVERETT
 Automatic Water Heater
 Gen. 1244 631 TRINITY ST.

EDWARD J. FISHER
 PLUMBING AND HEATING
 41 SARANAC ST.
 GLEN. 4730-GLEN. 5847

FLESCHE & SCHMITT
 INCORPORATED
 ROOFING AND SHEET METAL WORK
 Jones and Brown Streets
 ROCHESTER, N. Y.

Phone GLENWOOD 4794
ALOYS G. FISCHER
 PLUMBING AND HEATING
 41 SARANAC STREET
 Rochester, N. Y.

Electricity—Everything Electrical with Soudes
 Phone Stone 9900
HOLTZ ELECTRIC CO.
 ELECTRICAL CONTRACTORS
 Wiring, Fixtures and Repairs
 Phone 1416
 1050 North St., Rochester, N. Y.

BURKE & McHUGH CARTING CO.
 Light Auto Cars for General Delivery
 113 Ontario St. Main 3286

Martin VAN DUSEN
 Van Builders Hardware
 Monroch 106% Pure Paint
 Builders Tools
 North St. opp. Central Ave.
 Phones—Stone 2710-2711

PLUMBING AND HEATING
 Cooking and Heating Appliances
Bareham & McFarland
 INCORPORATED
 136 North Street

SERAPHIN SCHWARTZ
 CARPENTER AND BUILDER
 AND SPECIALIST ON HOMES
 2529 ST. PAUL BLVD. PHONE—GLENWOOD 816

Wiring—Fixtures—Motors—Telephones
 Panels and Switchboards
 REPAIRS
T. H. Green Electric Co., Inc.
 51 N. WATER STREET MAIN 801

Rochester American Lumber Co.
 GET OUR PRICES
 142 PORTLAND AVE. Phone Stone 1111

M. J. DeANGELIS, Architect
 ROOM 307 49 EAST AVE.