

**Friedler Soft Drinks**

**GINGER ALE**  
**SARSAPARILLA**  
**ROOT BEER**  
**ORANGE**  
**CHERRY**  
**BIRCH BEER**

All Kinds of Fruit Syrups  
**VICHY and SELTZER**

ASK FOR AND DRINK  
**FRIEDLER'S EXPORT**  
**PALE DRY GINGER ALE**

**Paul W. Friedler**  
**Bottling Works**  
 80-82-84 LOWELL ST  
 Phone Main 7442

**PER WEEK**

New Bikes as low as \$3 Down and \$1 Per Week

**Towner Bros.**  
 840 Jan St., 175 Lyell Ave., 175 University Ave., 679 South Ave. Phones at All Stores.

**WM. C. WALCH**

Hardware, Paints, Oil,  
 Glass, Kitchen Utensils,  
 Fishing Tackle

Genesee 2088 928 Genesee St.  
 We deliver Anywhere in the City

Main 2428 Main 2429

**American Taxicab Co.**

Right Service at the Right Price

Funeral, Weddings, Christenings, Station Calls

287 Central Avenue

Genesee 1050

**Let SINDEN Do It**

Make you a new over stuffed Davenport and Chairs or reupholster your old furniture. Finishing, Caning, etc. Fancy Pillows, Cushions, Table Runners, also sell materials in Mohair, Velvet, Tapestry, etc.

LET US REFINISH YOUR FURNITURE

Don't forget the number  
**160 BROWN ST.**

ESTABLISHED 1888

**SIDNEY HALLS SONS**

MANUFACTURERS  
 Boilers, Tanks, Smokes  
 Stacks, Breechings

Electric and Acetylene Welding and Cutting

169-175 MILL STREET

Sugar Cured Hams and Bacon  
 And All Kinds Of

**SAUSAGE**

**HUGO SCHRIENER**  
 25 Front Street Main 1695

**Watts Dry Cleaning Co., Inc.**

Expert Dry Cleaning Service  
 Careful—Thorough—Prompt

Genesee 614  
 822 Cottage Street

JARDINE'S

**GRAINS OF HEALTH**  
 For Chronic Constipation  
 To Regulate Liver and Bowels  
 Prepared by  
**JOHN JARDINE**  
 892 State Street Rochester, N. Y.

**BURKE & McHUGH**  
**CARTING Co.**

Light Auto Cars for  
 General Delivery

113 Ontario St. Main 8296

**J. A. PERRY**  
**PAINTER and DECORATOR**

78 Tacoma Street  
 Glenwood 2906-J Rochester

**Hemline Flare Is Seeking Admirers**

**Mode Still Persists; Same Influence May Dominate Autumn Fashions.**

It will come as something of a relief to learn that the Paris midseason collections have not furthered the reaction toward the slender silhouette. Indeed, even the hemline flare, once the leading insurrectionist against the simple and narrow outline, but more lately snubbed by an ungrateful mode, has returned to claim some of its early admirers. Despite the many predictions of a return to the straight silhouette, the spirit of the flare still persists, declares a fashion writer in the New York Herald-Tribune, and it is our belief that the same influence will dominate the modes of next autumn.

The flare, in its present connotation, does not exclusively mean the hemline distension which was its first and most popular manifestation. It now indicates any deviation from the strictly parallel outline which was the essence of the post-war silhouette.

The question of skirt length, about which so many conflicting ideas have been broadcast, remains in status quo. Despite rumors of greater length, afternoon dresses are as short as ever and sometimes a little shorter. Evening dresses are clearly longer but that is not of great significance. Indications at the moment are that late summer and early autumn will witness a slightly lowered hemline. It will be no more than a few inches at most, however, and it will not be the forerunner of the ankle-length skirt. For which you may be duly grateful.

Generally, the present midseason collections confirm the various tendencies that were launched earlier in the spring. Outstanding is the universal prevalence of the two-piece frock, though for day wear rather than evening dress, in which realm it has given way to the more feminine and elaborately worked gown that contrasts sharply with the sports-like tendency of the day-time mode.

Jean Patou shows jumper frocks even for the afternoon in town, and of such material and make that they are suitable for the bridge party or the tea d'ansant as well as the street. One particularly smart model is made of black satin, and has that touch of pink which is particularly fashionable just now. It appears in the cravette, the cuffs and in two narrow rows in the skirt above the hem. The whole skirt is finely plaited.

Another charming example of the jumper frock in the Patou collection is a dainty model that will be much worn at Deauville and Biarritz throughout the summer. It is made of beige crepe de chine, finely hand-tucked in horizontal lines with a small square yoke, the latter left untucked. A narrow gold leather belt gives the final touch of originality to this pretty frock, which has the skirt plaited with the same degree of fineness as the tucks on the jumper.

Contrast in Coat and Dress.

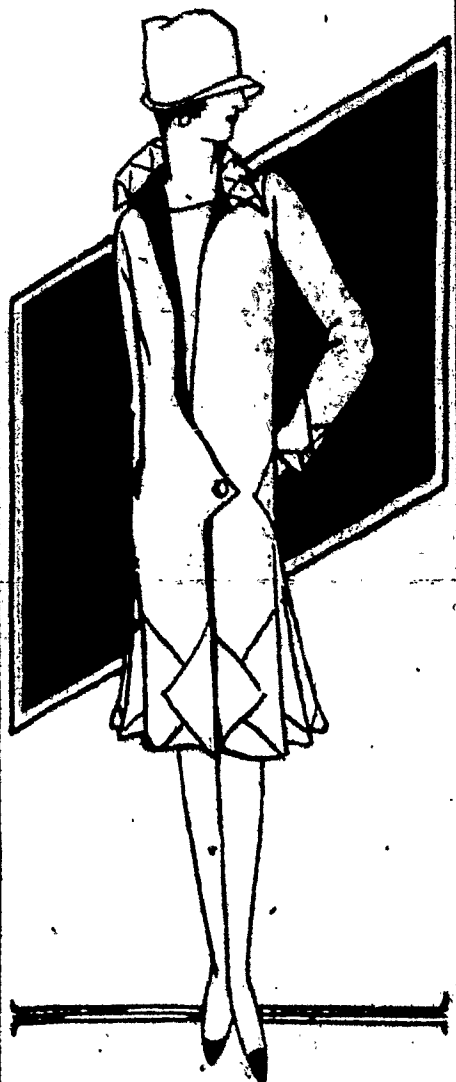
Also noteworthy among the general tendencies of the demi-season offerings is the contrast between coat and dress in the two-piece ensembles. A Louiseboulanger model illustrates a very happy interpretation of this idea. She shows a straight coat in mauve

is lined with foudard printed in bright blue and black on a white ground. The same foudard is used for the dress, which has a border of blue, black and white stripes round the hem.

Another characteristic of the midseason is the further development of the uneven hemline. This is seen in points and petal edges on the more elaborate afternoon dresses, and sometimes in turrets on simpler gowns, as in one smart pale yellow model by Louiseboulanger that is cut out to make the box plaits in front appear a little longer than the rest of the skirt. The same cut is used in the plain black, thus giving wider serrated edges all along.

Midseason Evening Gowns.

In evening gowns the midseason showing of the haute couture evidences a continuation of the two schools that have opposed each other all spring at the smart Paris functions. On the one side there is the plain chifon gown developed in various effective colors. The significant point of this type de soir is that it is entirely devoid of trimming except



Coat of Orange-Beige Kashia Lined With Red Crepe de Chine.

In the shape of some flower or motif of the same color as the dress. Molyneux varies this very slightly by using marquisette instead of chifon, and the effect is as light and airy as if the fabric were chifon. Pale turquoise blue and beige that is ranged from palest champagne to light nut brown are the most popular new colorings for these gowns, though there is still a great deal of currant red, geranium rose and a beautiful bright green with a hint of blue in it like the color of Kentucky grass. White is also used and there is a great deal of very simple black that is being worn by young girls.

The other school of evening gowns is what is known as the glittering type. It depends for its effect on the richness and sparkle of its embroidery or fringes which are carried out in the beads and sequins and sometimes diamante and crystal. The form of the latter species is straighter than that of the chifon gown, for the fullness necessitated by a filmy material is replaced by flat flounces and slashed panels in a gown that is weighted by embroidery. Another contrast in their elaborate types is the often one-sided effect given by drapery in the plain chifon gowns, whereas the embroidered dress is usually symmetrical in form.

For the Traveler.

The urban exodus is about to begin. Two things are uppermost in the mind of the prospective, feminine traveler. What shall she wear for the trip itself and the incidental touring, and what types of dress will insure her certain smartness, even when sojourning in a strange country.

The first consideration for the traveler is that she arrive at her destination as fresh and trim, or almost so, as when she started out. Nothing is more disillusioning than to leave home in a fresh frock of some light-weight material and descend from the train or motor hours later in something that is so wrinkled and rumpled as to bear almost no resemblance to its former self. Therefore when traveling choose a costume of soft woolen mixture. These are admirable for retaining their lines and not showing dust and soil. As the present tendency is toward a great expression of color, the dull, drab checks are not so desirable as those of a gay tone.

Frock of Black Crepe Georgette, White Georgette Trimmings.

Lainage made with the new deep yoke that also goes over the top of the sleeves in a shield movement. This coat is lined with dull rose crepe de chine which has a hint of mauve in it. The dress is also made of this rose crepe and has a new line in the interesting long stole front that hangs loose from a pointed yoke at the back, having crossed the shoulders.

The Clashing Ensemble.

Molyneux carries out the contrasting coat and dress in rep and foudard, so that all possibility of the unlovely crushed look is avoided.

**Avoid Home Baking In Warm Weather.**

Baking in warm weather is no fun, as the busy housewife will agree, and this is the reason that so many women go to the Arnett Bakery for their baked goods supplies now.

Bread, cakes, cookies, pastries and all kinds of good things to eat come from this modern, sanitary bakery at 344 Arnett Boulevard.

The Arnett Bakery is clean, not only in front where the public sees the fine array of baked goods, appetizing and delicious, awaiting them, but also in the back where the ovens yield their rich harvest of golden brown bread, rolls, cakes and pastry.

People who are particular about what they eat always insist upon the Arnett Bakery products, for this concern has built up an enviable record for using good material in all its baked goods, and they are wholesome and delicious.

**Cinder Blocks Mfg. Under Straub Process**

(By N. C. W. C. News Service)

The Rochester Cinder Block Corporation was organized for the manufacture of cinder block under the Straub patent.

Combination of cinders and cement in the Straub patented block are advantageous and builders of all kinds of buildings are rapidly adopting them. They are absolutely fireproof thus giving lower insurance rates, less costly to erect, are damp proof and require no tarring or turpentine, will take stucco perfectly, do not crack or peel and will take nails.

All wooden trim can be nailed to blocks themselves. They provide insulation and insure even temperature, thus reducing fuel consumption. Great structural strength is found in buildings made of them. They are sound proof, making them very desirable for libraries, schools and other public places.

The Straub cinder blocks are built here in the city in the plant of the corporation on Norman street. More than 8,000 square feet of factory space is required to manufacture four thousand blocks per day.

The Rochester Cinder Block Corporation is the only plant in the city using the Straub patent. It has no connection with any other firm here building cinder blocks.

**Many Leisure Hours Gained by Use of Round Oak Range**

(By N. C. W. C. News Service)

"Round Oak and Sterling Ranges burn less gas," said Joseph H. Diehl of No. 759-63 Main street west, who sells these type of ranges. "That fact in itself should recommend these ranges to the average housewife. But these ranges have other advantages. They cook, bake and broil in a manner that is a delight to all users."

The Round Oak and Sterling Ranges have been designed by men who have considered, first and last, the convenience of the housewife. The range that actually gives a housewife more hours of leisure each week, and which does the housewife's work in an extremely economical manner, comes close to being the ideal range.

"Women who use Round Oak and Sterling Ranges, after trying various other makes, frequently come back to us with this statement: 'I don't see how I got along so long without it.'" Mr. Diehl said. "If the woman of the house is happy with such a type of range, who else has to be pleased?"

In the show room in the Diehl store you will see all models of Round Oak and Sterling Ranges.

**Let "Van" Supply Your Hardware Needs**

One of Rochester's best known hardware men conducts a very up-to-date and complete store at the corner of North and Lyndhurst streets. Many are familiar with his name, Martin Van Dyssen, better known as "Van." His stock is always complete and those who wish any hardware, whether it is inside wars or outside will find a fine assortment here at the right prices.

People who are planning on moving into their new homes this fall and need the right and newest thing in inside hardware will find Mr. "Van" an authority on the subject, and one who will be only too glad to furnish you with the information. Fixtures can be obtained in nickel or brass in different finish.

These days when the weather is so warm an electric fan is essential for the housewife. Some very nice ones can be had at very low prices, and a fine line is on display at his store.

There is, too, the general line of hardware always needed by builders, contractors and architects, and also by the home owner. Call at this store when in need of any of this line.

"It's funny to me any time I want to go anywhere you're always too tired, but if you want to go out it's a different tune."

"If you are gonna talk in your sleep I wish you'd talk so somebody could understand you. I spent an hour last night trying to make it out and besides it keeps me awake."—Exchange.

**WORTHY FIRMS TO PATRONIZE**

**F. H. PHELPS LUMBER CO., INC.**  
 LUMBER, TRIM, SHEETROCK AND ROOFING  
 MAIN 790 202 ALLEN STREET

**Fresh Home Meats**  
**ANDREWS MARKET**  
 73 FRONT ST.

**STRAUB CINDER BLOCKS**

THE GREATEST IMPROVEMENT IN THE BUILDING INDUSTRY IN THE LAST DECADE  
 LET US SHOW YOU

**Rochester Cinder Block Corp.**  
 NORMAN ST. (Near End of Norman Car Line) GLEN 4196

**MOVING & STORAGE**  
**Geo. M. Clancy Carting Co.**  
 597 Webster Ave. Room 718  
 Opp. Hamwood Terrace

Work Called for and Delivered  
 Open Evenings

PHONE CHAMBER 1549

**LEWIS CLOTHES SHOP**  
 Where Better Clothing Costs Less

John McGarvey, Trustee  
 70 Main St.  
**Authentic and Dependable**  
**McGarvey Coal Co., Inc.**  
 1 Reynolds Arcade  
 Rochester, N. Y.

**MEN'S FURNISHINGS**

Also, Cleaning, Pressing, Dyeing, and Dyeing of Linens, Etc.

1000 Main St.  
 607 MOHAWK AVENUE  
 Leo A. Lewis Rochester, N. Y.

**Safety Service Satisfaction**

**J. C. CLANCY CARTING CO.**  
 Furniture moved, packed, stored  
 Local and Long Distance Trucking  
 1 Grand Avenue  
 Business Phone, Calver 1528

WE CANNOT  
 FORGET

**ARNETT BAKERY**

Orders Taken for all occasions.  
 344 ARNETT BLVD.

GENESEE 4222

**ARNETT BAKERY**

Orders Taken for all occasions.  
 344 ARNETT BLVD.

WE CANNOT  
 FORGET

**ARNETT BAKERY**

Orders Taken for all occasions.  
 344 ARNETT BLVD.

**COURTESY**

**"MAX" THE FLORIST**  
 Where Artistic Floral Arrangements  
 248 LYELL AVENUE

**QUALITY**

**"MAX" THE FLORIST**  
 Where Artistic Floral Arrangements  
 248 LYELL AVENUE

**MARTIN'S GROCERY STORES**  
**GROCERY STORES**  
 Rochester's Greatest Retail Grocers  
 Operated by City Falls

**QUALITY**

**"MAX" THE FLORIST**  
 Where Artistic Floral Arrangements  
 248 LYELL AVENUE

**"Sulphur Vapor Baths"**  
 The original and only  
 Sulphur Absorption Baths  
 in Rochester.

**MRS. A. KNIGHT**  
 Room 1402 124 Park Ave.

**QUALITY**

**"MAX" THE FLORIST**  
 Where Artistic Floral Arrangements  
 248 LYELL AVENUE

**Charles G. Diehl**  
 Red Cross Store  
 and Furnaces  
 Phone, Genesee 1495 255 Jay St.

**North End**

Expert Attention  
 Gas, Oil, Electric  
 244 Avenue

**John Albrecht & Son**  
 Dealer in  
 Old Iron, Rags, Metal and  
 Paper, Barrels and Boxes  
**31 SIEBERT PLACE**  
 MAIN 4438

**Section**

West

**Herbert Kircher**  
 FRESH, SALT AND SMOKED  
 MEATS  
 1804 CULVER ROAD  
 Calver 1928 Rochester, N. Y.

**18th Ward**

DAVIDSON

**Buick Service Garage**  
 51 Stone St.  
 Through Service We Grow  
 Marvel Carburetor Service  
 Stone 4309 Gene Richards

**CHAMP**

28 Columbia

**A SUBURBAN STORE WITH DOWNTOWN PRICES**  
 Also QUALITY  
**HAMMONDS HARDWARE**  
 1206 Calver Road  
 Phone Calver 2822 We Deliver

**Balloy & Howden**

Wash, Clean, & Laundry Supplies  
 1206 Calver Road

**KENNETH A. STOCKING**  
 LICENSED PHARMACEUT  
 Successor George Haber 241 Stone St.  
 We will endeavor to satisfactorily fill your Drug and Drug Building wants.  
 If it is a Prescription take it to Stocking's

**HOMER KNAPP**  
 General Building Contractor  
 144 1/2 Calver Road  
 Telephone 3723

**ANYTHING ANYWHERE ANYTIME**

Telephone Main 1412

Centrally Located Office in Powers Arcade

**"YOUR BAKES"**

FORN BREADS AND ALL KINDS OF BREADS  
 French, Danish and Swedish  
 Telephone Main 1412

**SAM GOTTRY CARTING CO.**

**"YOUR BAKES"**

FORN BREADS AND ALL KINDS OF BREADS  
 French, Danish and Swedish  
 Telephone Main 1412

**PATRONIZE OUR AD**