

Wraps Have Call for Spring Wear

Coat Dresses and Capes Are Among French Fashion Offerings.

In street costumes alone the choice of material and lines is most varied, says a fashion writer in the New York Herald. Starting with the idea of the simple suit and street dress made on rather boylike, or as the French call it "garcon" lines, suits for the street are developed in more elaborate manner for more formal occasions, running through so many different forms that classification seems impossible.

It may be that later in the season a decided preference for one of the more elaborate types will spring up to alternate with the already established tailored mode. At present time it would be hard to make any positive statement, but the furriers who have banked their judgment on the success of short coats of fur for spring and early summer wear, and foolish as it may seem some of them have, are recklessly running counter to this tide of street costumes and wraps.

Earlier announcements from Paris that many of the spring dresses will have wraps to be worn with them is borne out with each showing on this side as it comes along. Even a blouse costume shown by Patou has its individual coat, a quaint plaited flounce design.

Wraps as Long as Dresses.

Some of the new wraps are as long as the dresses, some of them are short, others three-quarter length. And capes, cape-back dresses and straight scarf-like capes are numerous. The cape, except perhaps for evening, always is short. Fur as trimming seems to be more prevalent in the early models designed in this country than in those shown from Paris, although a few models are collared with light pelts. More enthusiasm apparently is shown for the clipped feather trimmings and the smart scarf models than for fur of any description.

Coat dresses not exactly on the order of those we have known before, but still near enough to coat lines to be so classified, are another type of street costume with which to reckon. Some of these coat dresses might be easier described as suitlike dresses, for a long tunic looks more or less like a jacket and a wide closing follows the line of the wrap-around skirt, with the result that the dress looks very like a suit worn buttoned up, although it is in reality in one piece. In a few houses a suit dress is shown with a straight one-piece back and the jacket line in the front simulated by a circular peplum or a straight tucked flounce.

Any complaint that the woman to whom the femme fille models and the mannish tailored lines are unacceptable may have to forget it with the very first sight of the actual models. Suits, frocks and wraps are shown with sufficient dignity of line to give the really distinctively gowned woman



Charming Dress of Black Satin Gives Somewhat the Effect of a Suit. Scarf Drawn Through Slit at One Side is of Crepe.

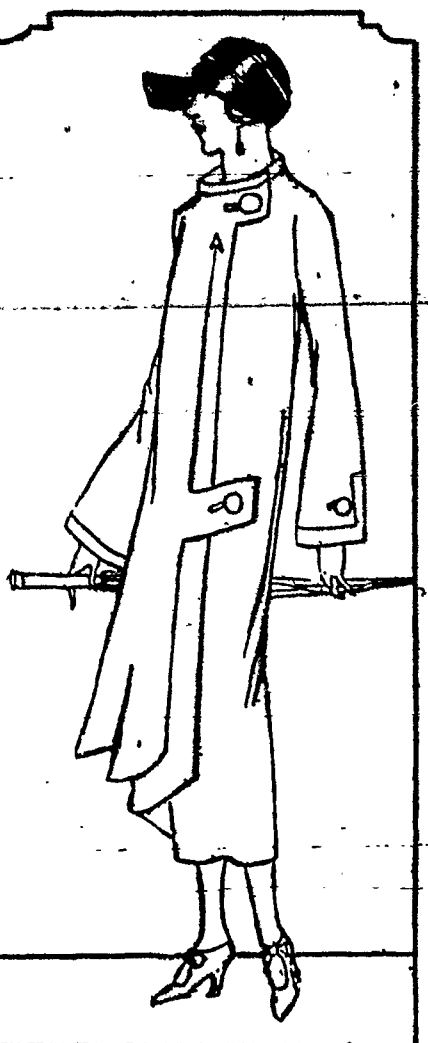
that difference of style that sets her apart from the younger woman, who is rather apt to carry things too far in the matter of wearing the popular thing.

One of the most interesting of the elaborated suits is a study in plaits by the house of Jean Patou. Plaits are a theme in especial favor with this house. Black satin, mirrored in its shiny quality, is used, and except for a plain strip at each side and plain sections set in the collar, the entire coat is plaited. It is almost like a suit and plaited skirt, except for the plain under-arm strip, two flounces of the plaiting set on, one above the other, compose the skirt portion of the coat. Plaits which hang from neck to the finger-tip length make the jacket-like upper portion.

The sleeves also are plaited, and as with the plaits of the rest of the suit, the lower edges hang like a

lace. In the sleeves the tucks hang one from the elbow to the wrist, and second plaited flounce is set aside, that it falls well over the hands. The collar stands double about the throat. This is the coat designed to wear with the blouse of white chiffon.

One Model Called "Microbe." A model dainty and humorously called "microbe" is one by Yteb. It, too, emphasizes two points in the spring models, plaits and wraps to match frocks. Reversing the procedure of the design just described, this model uses the plaiting entirely in the dress, and the trimming on the coat is merely wide bands composed of small interlacing strips. Two bands circle the bottom of the coat, one the sleeves and one the collar. Except for the fact that the coat and frock are in exactly the same shade of toast brown—pale brule, as the French call it—no great stress is laid on similarity, either in the trimming or material. The frock is of georgette, and the coat is



Rather Unusual is the Gown of Serge Silk Poplin Fashioned With Loose Cut Neck on Chinese Lines and Coat Fastenings.

placed in a more practical class by being featured in kasha cloth. There is a certain expertness in this restraint of a repetition which might make the effect wearisome as well as reveal an amateurishness in the paucity of ideas. The frock is almost sleeveless, and is plaited from the square-cut neck to the low waistline, two flat, loose bands circle the hips, preserving a straight silhouette, which is completed by fine straight plaits below. A very narrow tie girdle is used.

With the first appearance of the black and white theme, a trifle too ardently accepted, the makers are relieving the combination with a touch of color. Drecoll used yellow in combination with black, as well as the white, and Lanvin, with flawless good taste, uses the black and white, but tones it charmingly with a touch of clear blue, or perhaps a little lacquered red. In this collection are seen frocks of white with top coats of black bound with white grosgrain ribbon.

Astonishingly smart is a severe dress for street wear of navy blue rep with a row of buttons trimming the back from the top of the standing collar to the skirt hem. The buttons are placed on a band, evidently to avoid complications with the bottom of the tunic, which is in one piece with the waist, but falls separate each side of the band of buttons from the waistline to below the hips. At the front the tunic appears in the form of an applied peplum each side, but not in the front. A belt extends across this space, with ornaments at each side. No suggestion of a waistline, however, is seen in the back. Sleeves in this dress are tight and long.

Tunic for Street Costumes. The tunic type of dress will undoubtedly afford inspiration for many costumes for the street. The unbroken line which may be used in this manner at the waist is often of a contrasting aspect. This is seen in a smart dress of satin, with a scarf of the new figured crepe silk winding about the neck and caught through a slit at the front of the dress. A side closing in this design and a peplum, or circular flounce, as the designers prefer to have it called, give the jacket line. The flounce is set on at the waistline in a series of points.

A coat dress of mandarin inspiration has the resemblance to a long coat. The peculiar closing at the neck and the loose straight cut, with regular coat fastenings, makes this model particularly severe.

Trimming in most of the models for street wear confines itself to the skillful use of narrow ribbons, which may be of colors contrasting with the shade of the costume.

The inconsequential dresses of light summer silks and crepes are sometimes the most interesting part of the procession of new ideas which are sent from Paris for the warm-weather wardrobe. In these gowns, taken a trifle less seriously than the more formal types of costumes, the designers often try out some of the most novel ideas and startling costumes.

Black Lace Dress for Evening Wear

Old Favorite Much in Evidence and Promises to Remain.

Lace has made a triumphant re-entry into the domains of Fashion. Merely suggested last spring, observes a fashion authority in the New York Tribune, it remained for the present season to witness it as a dominating feature of the evening mode.

Black is easily the favored color and is smartly combined with red trimmings. Chanel is a particular adherent of this combination and shows many exemplifications of it.

Cheruit also features formal frocks of black lace. An interesting dinner dress from this designer is developed in black lace over black satin. Across the front there are four tiers of accordion-plaited lace flounces, while the back of the dress is split its entire length and a soft rolling cape-like collar of the lace falls from a bateau neck.

A dress of black lace and black tulle was christened Mah Jong by the enterprising Georgette. The only touch of color on this gown, which features flowing panels hung from a low waist at the front, is an emerald green ornament placed in the center of a tulle girdle that crosses the front only.

Jenny, while featuring black lace, does not show it to the exclusion of other colors. Bright hues enliven her very attractive dinner gowns. Shredded flounces or flowing panels, either in straight or uneven lines, are inevitable with this designer on evening models of lace or chiffon.

Pointe has revived lace in a striking evening gown except Arista, consisting of heavy black satin and fine black and white lace. A notable model from Molyneux features black chantilly encrusted on white marquisette.

When the entire dress is not of lace the desired effect may be achieved by chantilly insertions applied to tulle. Heavy open meshes are sometimes embroidered in silver threads to simulate silver lace.

In summation, it is apparent that lace, while appropriate for afternoon costume, is essentially the fabric of the evening modes—the dinner and the dance. Chantilly for the dress, Valenciennes as a trimming and black as the overwhelmingly outstanding color are the three predominant notes.

Summer Frocks of Pink and Snow-White Print



Showing practical summer frock of pink and white print, with "boy-cut" vest of white organdie and knickers. A cap of the print completes the costume.

Low Waistline Used on New Paris Models

The normal waistline, always a diversion for the French couturier, has wandered further afield than its wont in this season of the simple silhouette, says a fashion writer in the New York Tribune. Indeed, its journeyings in some instances have entirely effaced it from the costume. Yet, on one point all Paris is in accord—the waistline cannot be as natural.

The higher line boasts an imposing list of sponsors. There is Jeanne Halle, who has sounded the Directorate theme in her frocks—her models feature various treatments of the high waist, including some rather bizarre effects. On one frock the waist is high on one side and low on the other—another dress shows a high line in front and an extremely low one in back. Martial et Armand have also succumbed to the appeal of the Directorate—there is a waistline typical of that period, almost unnoticeable at the back and markedly high in front.

The effect is achieved through the adroit manipulation of embroidery, cut bands and drapery. Cheruit, whose slim silhouette and short skirts require only the merest suggestion at the waist, has moved the line perceptibly higher than on her models of last season.

The Latest Makeup. Once more the latest makeup is quite colorless except for lips of scarlet and upper eyelids of blue. But instead, as formerly, of being ivory, the rest of the face is dead white.

The Kitchen Cabinet

Stay at home my dear, and rest. Homeshoppe hearts are happiest. For those that wander, they know not what they know. Are full of trouble, full of care. To stay at home is best. —Longfellow.

JUST A FEW GOOD THINGS

Even in a family where ginger bread is a favorite, there will be leftovers.

Try steaming it and serving it hot with a bit of sauce with it for dessert some busy day when there is little time for preparing a more elaborate one. Then another time

try making the following: **Gingerbread Custard.** Scald a pint of milk, beat the yolks of two eggs and add one-fourth of a cupful of sugar; add the milk gradually to the sugar and egg and pour this over ginger bread crumbs (a cupful or more) in a baking dish. Set in a pan of hot water in the oven and bake until the eggs are set. Cover with a meringue prepared from the egg whites and a few marshmallows and brown in the oven.

Delicious Muffins. Pour two and one-half cupfuls of milk over three cupfuls of bread crumbs, let stand until soft, then beat with an egg beater; add the yolks of three eggs, one cupful of flour, two teaspoonfuls of baking powder and one-half teaspoonful of salt; beat well and add one tablespoonful of melted butter and fold in the stiffly-beaten whites of the eggs. Bake in buttered muffin tins about twenty minutes.

Lazy Daisy Cakes. Into a measuring cup drop the whites of two eggs, fill the cup to one-half with softened butter, not melted; add milk to fill the cup. Now add one cupful of sugar, one and one-half cupfuls of flour, two teaspoonfuls of baking powder stirred with the flour three times; add a bit of salt and beat hard with a Dover egg beater for several minutes. Bake in a loaf, use with powdered sugar, one teaspoonful of lemon extract and a tablespoonful of milk; beat until creamy. This makes a tender and delicious white cake.

Add a half-cupful of blue walnut meats to the custard pie. The nuts will rise, and form a delicious crust over the top of the pie when baked. Chop the nuts rather coarsely; do not put through the meat grinder as it crushes them and makes them pasty.

Nellie Maxwell
The KITCHEN CABINET
(6, 1921, Western Newspaper Union)

"If you'd make life worth living
Try these six things worth while:
They're three—'I'll turn 'em up
again."
Just love 'em, work 'em, smile."

SERVE THE SOUP

Every spoonful of leftover vegetables, bones, broth from corned beef or a cupful of gravy, celery leaves and parsley, a tablespoonful of oil or peas, are all an addition to a pot of soup. Anything that is good, no matter how small, is good.

In how small a quantity may be utilized in a soup. Soup prepared from such bits may be served at a low cost, while an occasional cream soup is served to add variety.

Vegetable Soup. For three quarts of soup use one cupful each of sliced meat, fresh or cooked carrots, turnips and tomato. Add one-half of a minced onion, one tablespoonful of salt and one-quarter of a teaspoonful of pepper. A few leaves of lettuce, cabbage or summer squash may be added for variety. Bring to a boil, using four quarts of water; and cook slowly one and one-half hours. The last half hour add one-half cupful of rice and more salt and pepper if needed.

Cream of Salsify Soup. Scrub six good roots of salsify, cut off the tops and let stand in cold water until ready to cook. Cook in boiling water until tender, press through a fine sieve. Put the pulp with a sliced onion and two sprigs of parsley into a double boiler. Add a pint of milk and let stand on the fire until needed. Melt one-third of a cupful of sweet fat, add one-half cupful of flour and cook until smooth. Add one teaspoonful of salt, one-half teaspoonful of paprika and one quart of bubbling hot milk. Then add the salsify and milk. Reheat and add two well-beaten eggs mixed with a cupful of cream. Serve hot. The yolks may be cooked in the soup and the whites beaten stiff and served on top as a garnish. A tablespoonful of whipped cream, or less, on a bowl of soup is a great improvement.

Stuffed Eggs. Cook eggs until hard and cut into halves after steaming. Remove the yolk, mash with softened butter, a bit of cayenne, onion juice, mustard and salt. Mix well and re-fill the whites with the seasoned yolk. Before filling fast the cavity with salt and rub with melted butter. Serve with bread and butter sandwiches.

Nellie Maxwell

GET OVER PLACE ON
House Wiring - Fixtures
also Radio Sets
and Electric Appliances for the Home
Fluorescent Lights and Electric Stoves
HANSS ELECTRIC CO.
100 North Street

Abdominal Supports
Obesity, Pregnancy, Prolapse, Enlargement of
Cotton, Silk, Elastic and Non-Elastic
GEORGE R. FULLER CO.
230 Andrews Street

Patented Home-Made Egg-Noodle
THE NATIONAL HOME-MADE EGG-NOODLE
Manufactured by
National Egg-Noodle Co.
635-7 Joseph Avenue
Rochester, N. Y.

CHIROPRACTORS
OFFICE HOURS
P. M. 10 to 12 P. M. and 6 to 8 P. M.
RAY W. SHERMAN
HARRET K. SHERMAN
Rochester, N. Y.

Eyes Examined
LEO W. KINDLER
OPTOMETRIST
Lyndhurst Bldg.
Cor. North and Lyndhurst St.

For WEDDINGS, CHRISTENINGS and FUNERALS
Call Main 447—National Taxi—Main 184

Excellent Cars
314 Hudson Ave. Day & Night

American Clay and Cement Co.
General Contractors & Builders
1175 East Main Street

Have Your Carpets Cleaned
Without Injury
WORK GUARANTEED
We Sell and Install
VELVET RUGS
ROCHESTER, N. Y.

CARPET AND FLOORING
Oriental and Domestic Rugs Washed
GRAY CARPET CLEANING WORK

251 Sanford St.
VACUUM BEATING, WAXING, POLISHING
formerly at 11-12-13 Main Street

Main 7765
PALMER FISH COMPANY
Lake and Ocean Fish
141 State Street

MILLER TIRES
ALFRED J. TAYLOR
Complete Tire Service
945 Genesee St., Rochester, N. Y.
Phone Genesee 1665-W

Phone Stone 1149
John Fricker Co.
Tin, Copper and Sheet Iron Work
METAL CEILINGS
17 Mt. Hope Ave., formerly at 10 Mt. Hope

Make Your Trip More Enjoyable
Refreshing Night on Lake Erie
Thousands of well-bred travelers find the most comfortable night of rest of their vacation at the Hotel...
DAILY, MAY 1st to Oct. 1st
Leave Buffalo 7:30 P. M. Arrive Cleveland 7:00 A. M. Return Cleveland 7:00 P. M. Arrive Buffalo 7:30 P. M.
Convenient for College Boys, Tourists, Business Men, etc.
Room \$10.00 per week
Food for the week \$10.00
Total \$20.00 per week
The Cleveland and Buffalo Hotel Co.
Cleveland, Ohio

Job Printing Done