

GAY IN TRIMMING

New Autumn Models Are Literally Embroidery Covered

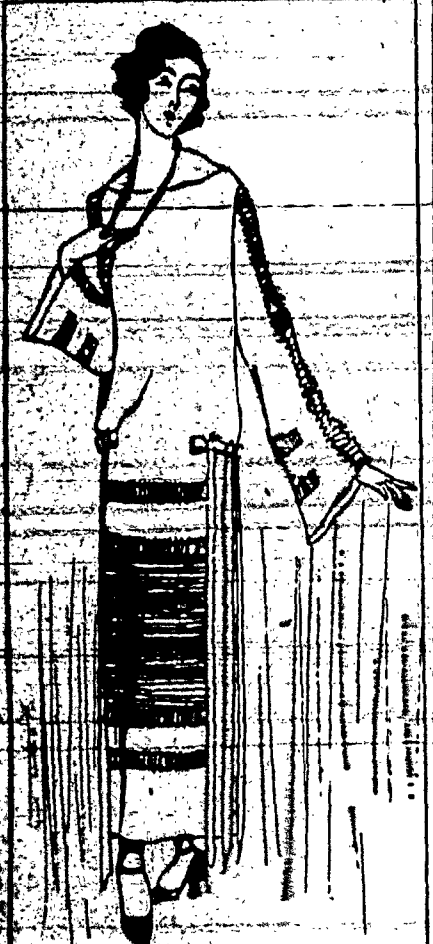
Many of the Latest Afternoon Dresses Made of Crepe Romaine, Which Resembles Georgette.

Fashion still pivots on trimmings, asserts a fashion authority in the New York Tribune. Apparently dressmakers do not think that their clients are ready to accept a new silhouette, consequently they make little effort to create one. Women have been so definite as to what they would and would not accept in the matter of silhouette that designers still depend upon trimmings to give variety to their models. While many new ideas are constantly worked out in trimmings, there are likewise many variations of old themes.

Discriminating women seemingly have not had enough of embroidery. Some of the new autumn models in silk are literally embroidery covered, the pattern being so exquisitely executed that it seems a part of the fabric.

Many of the newest afternoon dresses for autumn are made of crepe romaine of that quality which resembles crepe georgette, but which is considerably more body and is more durable. A charming model developed in gray crepe romaine, is trimmed with hand-plaited bands of fallie ribbon set into open interstices which are embroidered all around. Broad bands of tiny hand-run tucks in both the back and front give further ornamentation and weight to the dress.

Two colors of georgette crepe are charmingly combined in some of the new autumn dresses, the two tones being brought together by means of very elaborate embroidery. Navy and



Gray Crepe Romaine Model With Hand-Plaited Bands of Fallie Ribbon Set Into Embroidered Interstices and Hand-Made Tucks.

gray is a favorite combination. The dresses are so made that they appear to be almost of one solid color viewed from one point and of another when viewed from another point. For instance, in the combination of blue and gray, the back of the dress is almost all blue and the front all gray.

MODES OF THE MOMENT

For the semi-dress occasion the black charmeuse gown trimmed in velvet or brocaded ribbon is occupying the place of the beaded gown. A long lined black charmeuse has wide bands of electric blue velvet ribbon extending from the dropped shoulder to below the elbow where the charmeuse begins again. White beads in tiny design almost entirely cover the velvet. No other trimming is used.

Many of the velvet hats have reversible crowns with velvet on one side and embroidered effects of metallic color on the other. This treatment provided a hat to dress wear as well as for street wear.

Crepe waves continue to reign for afternoon wear in preference to the shiny surfaced fabrics.

The little draped turbans of silver or gold cloth which are so popular in Paris at present are being pressed into prominence by many of the American shops. They are designed for evening wear and are suitable for any color combination with which they are worn.

APRONS FOR LITTLE GIRLS

Aprons and Panels Excellent Material for Over Garment for Girls of Seven.

The trend of aprons for the girls of about seven years is of a simple and delicate design. It is of a material that can be slipped on and worn as a regular apron over a regular dress. The apron is in a gay design and is made of blue and white material. The bodies is of a delicate and simple design. The apron is of a material that can be slipped on and worn as a regular apron over a regular dress.

A WARM WRAP FOR MOTORING



For motoring and under all conditions when durability is required, nothing takes the place of the racoon fur coat.

PREFER LONG-HAIRED FURS

Wolf Trimming and Similar Peltry Hold Favor; Beaver and Squirrel Collars Shown.

There is a modified way of handling the voluminous lines of the new season that give grace and real comfort to the wearer of such coats, bought, first of all, from a practical standpoint. One manufacturer has made wearability his first consideration, and in doing so has designed some smart and popular numbers.

A preference is given to wolf trimmings and long-haired furs, although beaver and squirrel collars are, of course, included in the showing. Black ormandale has been used in fashioning one very opulent-looking model that is trimmed with platinum wolf. Wide mandarin sleeves make a nice complement to its full back and tailored braiding, defining the sleeve section from the back in a clever means of accentuating its fullness.

This model is typical of a group of coats showing varied sleeve treatments and build uses that are smart. The use of a ragoon collar as a coat of ormandale is one of the particularly novel notes introduced in the fur-trimmed styles. Extruded ormandale and bolivia numbers are an interesting part of the showing, and in these models the beauty of the cheap silk fabrics seem most pronounced.

Jenny sleeves and a Jenny neckline are most aptly used on one of these untrimmings. Scarf collars edged with silk fringe and a mottled log-of-dragon sleeve are introduced on another coat that shows a circular fullness. Circular tassels of large dimensions drop from the sleeves and form a rather handsome ornament. Among other features to be noted is particularly smart is the pouched sleeve gathered into a cuff. This hints of a posant influence and has a decidedly youthful effect.

FANS THAT MATCH THE DRESS

Novelties of Coque in Delightful Colors, Black Net Lace, to Accompany Evening Gowns.

Novelty fans of coque in the most delightful colors are mounted on stalks of carved gourd and tortoise-shell. These novelties of black and red color features are particularly effective. However, these might be considered extreme by the woman who wears conservative clothes.

Black net or lace fans to match evening dresses are smart. Among this type now shown are some that might quite well have been chosen by those exacting Spanish beauties who were never without one of these novelties of femininity.

A charmingly lace fan, in order to correspond with the dress, may have the design of the lace accentuated either by needlework or by hand painting the design in colors and metallic effects.

As an accompaniment to the evening dress of plain-colored silk there are fans made of a succession of silk petals, and petals mounted on frames of carved ivory or amber, according to the color of the silk used. These fans may be had in almost every color imaginable. Some have ostrich tufts in a contrasting color scattered around the petals. For instance, one made of purple petals has yellow ostrich tufts while another, of pearl gray, has the ostrich in rose color. These are made up in both small and large diameters and the smaller ones being particularly adaptable to the young girl.

A New Style Point

One of the style points emphasized by models shown by one importer is the dropped shoulder accompanied by a broad, loose, underarm movement. This idea is especially featured in coats and suits, and particularly in the jacquette, which is hailed as a model extraordinary.

MANY NEW LINES IN LATEST GOWN

Silhouette of Present Season is Elaborate in Its Many Variations.

MODES TO SUIT ALL FANCIES

Fashions for Women Who Refuse to Adopt Longer Types as Well as for Those Seeking Up-to-the-Minute Outfit.

Down in her heart the American woman who loves fashions has been longing for a change. She may rail against this statement as she will. But just the same, declares a fashion writer in the New York Times, she is buying the new silhouette with the greatest enthusiasm. All an interested spectator need do is to walk along the fashionable streets on any pleasant day to see the new silhouette in all its glory.

There are so many new lines in this silhouette that we will have to go into the thing at some length before we fully realize how interesting each one of us can look. At first a woman is anxious when she faces an entire change of her appearance. She wonders if she can ever adapt herself to the readjustment which the new clothes involve, but as she steps into the character, little by little, she finds herself charmed. A thrill enters her spirit at the prospect of finding new ways to be attractive.

In the shops there are many dresses for the woman who refuses to adopt the longer lines; another collection for the woman who has had only a temporary to-go-hat way in the adoption of the newer idea, and still another collection for the one who jumps in joyfully and embraces a theory which must needs become a fact.

Now, there is this bit of advice for the woman who is embarking upon the business of acquiring a fall and winter wardrobe. The more advanced the model, provided it has all of the elements which make it becoming, the longer it will last, with the power of proving itself a satisfaction through the long seasons to follow. If a woman is too conservative, then she is always coming to the place where a dress, bought only two or three months previously, looks a little passe and out of fashion. But if she had purchased in the beginning with a little more foresight, a little more courage and a little more desire to lead instead of to follow, she would find herself, at the end of three months still in the lead, instead of far behind. And at the end of six months or possibly a year she could have settled back comfortably with the assurance that her gown was still just right. That is one of the rules of good buying, but few women really have the courage to stand on their own and to demand of themselves that they follow the rule to the letter.

The One-Piece Dresses. There is still a variety of straight, one-piece dresses which will continue in favor. This type of frock is, not made so long as the fuller, flounder ones. It is longer, of course, than those which have been nearer the knees than the ankles, but it does not



Long, Slim Lines of Mauve Chiffon Draped Over Silver Cloth.

begin to touch those ankles. It is, in fact, about nine inches off the ground, a very good length for a skirt which is quite straight and does not boast the slightest drapery.

Another variety of simple frock is a compromise between the slim chemise dress and the extremely full one. It has a slight drapery on one side, which sort of pulls the skirt into the air at that one point and relieves the too great continuity of the long, straight effect. A great many women will like this sort of frock as their first venture into the field of the new silhouette. It will help them to get used to the new idea gradually, without any sudden upset to their fashion feelings. Some women are too busy and too occupied and too far removed

from any really consuming interest in fashion to want to bear the burden of coming out in full new regalia. They prefer to go more quietly about the business of changing their style and to work into any radical change with a little more ease.

Recently there was an exhibition of fashions for business and professional women which, though it was run from a brand new angle and for a brand new purpose, still showed many of the more recent gowns in the conservative forms. There were any number of these dresses that started out to be straight and ended by having that little draped effect on the side of the skirt which most successfully does the trick of breaking in the new white carrying out a semblance of the old. There were numerous short coats, too. These were bloused sometimes and at others left to hang loosely from the shoulders in a flare that was most effective when combined with the longer skirts. They need some-



The Combination of Wool Crepe Color With a Brown Silk Douzine.

of earth and silk and crepe, each vying with the other in an attempt to be the most glorious of all evening dress fabrics. The velvet brocades are particularly fascinating. The color of the silk, soft, velvet pattern against its fruitness and thinness of a chiffon background creates an interesting quality for that material which another finds difficult to equal.

One of the longer, fuller evening dresses is of taffeta with a skirt that does everything in the way of carrying out the character of the thing it sets out to do. It has, too, many of the newer points which are going to make the evening frocks of this season. There are the little ribbon ruffles all strung along the quaint, narrow panels of the taffeta skirt. There is the long and fitted bodice and there is the broad and floppy fichu which stretches across the shoulder in the most effective way. There is, also, that little ring of ribbon roses just at the front of the waistline where the bodice and skirt are joined together, and two little bunches of the same flowers to hold the fichu in place on the tips of the shoulders.

The fact is that all of the points of this gown are perfectly in harmony with the season's demands and details. They are combined in such a manner that the dress becomes one symphony of line to be worn wherever the occasion demands that formal gowns shall be worn. It is an excellent thing for a dancing dress, as there is no question about the management of the skirt. It takes care of itself as it flutters its long and graceful way about the floor.

Another evening dress is quite the opposite type though just as smart in its own way. They are really meant for two different types of women, one for the woman who is wearing the line and the other for the more girlish face and the rounder figure.

Lengthens the Lines. The dress is particularly good for the large woman who may need something to lengthen out her lines. It has, first of all, a fitted underdress of metal cloth, silver in this instance, then there has been draped over that foundation a fullness of chiffon which has the effect that the more buxom woman is eternally looking for. It is very well to talk about those with little girlish figures who wear the puffy clothes and about the character and charm of them, but there are many of us who cannot attempt to go in for anything so extreme. But this frock of which we are speaking has all of the lines which are now so common and which help to swing the body into the contour of the new silhouette. The girle is low and wide, are drapings of the fabric from the sides. The bodice is plain and held together by a tightly fitted underbodice, then, the lines of the dress are given the desired slender appearance there is a row at the belt, its silver sheen is in direct contrast to the mauve of the chiffon which the silver underdress is draped

A CHRISTMAS SUGGESTION
Why not give something useful?
A Ferris Bungalow Apron
is always appreciated. We make them. All sizes. All colors.
The Ferris Apron Shop
717 Clinton Avenue South

DANIEL'S COATS Supreme Values
November Sale
62 Clinton Avenue North

Rochester American Lumber Co.
GET OUR PRICES.
142 Portland Avenue
Phone, Stone 265

Stone 1917
HEMSTITCHING HANDICRAFT SHOPPE
Hemstitching - Pleating - Drawn Work
Buttons Covered - Stamping
Prompt Service Expert Workmanship
75 East Ave., Room 9 Mrs. Harold Simon, Mgr.

F. H. PHELPS LUMBER CO.
We Serve You in LUMBER
Our Trucks Deliver in the Country
OFFICE AND YARDS, 156 ALLEN ST.
STONE 720

Sport Yarns - Teazle Hats
We Specialize in Fleisher's Yarns.
Orders taken for Sweaters, Hats, Gloves, Mittens, etc.
RICH'S ART SHOPPE
808 W. Main St. Phone Genesee 864-J

PHOTOGRAPHS
A. L. LEHNKERING
New Location
16 State St. Room 518 Phone 6400
Always Ready For Wedding Photographs

LADIES!
Why not surprise your husband with a nice shirt at Xmas?
We will make from your material or you may select from our patterns
A. J. BALDOCK
Custom Shirt Makers 212 Central Bldg. Main 1267

The F. G. Rossney Company
PLUMBING AND HEATING
Estimates Cheerfully Given
Home Phone Gen. 239-J 461 Main Street West
Office Phone Main 7185
OFFICE HOURS
2 P. M. to 4 P. M. and 7 P. M. to 8 P. M. 10 A. M. to 12 M.
RAY W. & HARRIET K. SHERMAN
CHIROPRACTORS
Closed Saturday and Sunday
Thursday Afternoon 3:30 P. M.
685 MAIN STREET WEST PHONE GENESSEE 702

Charles W. Collamer
BUILDING CONTRACTOR
SPECIALIST IN NEW BUILDING CONSTRUCTION
Main 388 402 Ellwanger & Barry Building

Eyes Examined Main 7554
LEO. W. KINDLER
OPTOMETRIST
Lyndhurst Bldg. Cor. North and Lyndhurst Sts. Rochester, N. Y.

U-NEED-A-SUIT?
-TRY-
Altman's Sample Clothes Shop
We Sell For Less
Open Evenings 38 Reynolds Arcade

C&B DAILY BETWEEN BUFFALO & CLEVELAND
3 MAGNIFICENT STEAMERS 3
The Great Ship "SEANDREW" - "CITY OF ERIE" - "CITY OF BUFFALO"
BUFFALO - Daily, May 1st to Nov. 15th - CLEVELAND
LEAVE BUFFALO - 9:00 P. M. EASTERN LEAVE CLEVELAND - 8:00 P. M.
ARRIVE CLEVELAND - 7:30 A. M. EASTERN ARRIVE BUFFALO - 7:30 A. M.
Connections at Cleveland for Cedar Point, Painesville, Toledo, Detroit and other points. Railroad tickets reading between Buffalo and Cleveland are good for transportation on the steamer. For your latest prospectus for tickets visit C & B Lines, New Tourist Information Bureau, 119.49 Boarding Place, with 3 days return limit, for cannot exceed 30 days.
Specially selected seasonal puzzle sheet of The Great Ship "SEANDREW" sent on receipt of five cents. A check for one-page material and descriptive booklet free.
The Cleveland & Buffalo Steamer Company
General Office
119.49 Boarding Place
Cleveland, Ohio
Telephone 1234
The Great Ship "SEANDREW" is a 10,000 ton vessel with a 10,000 horsepower engine and a 10,000 ton capacity. She is the largest and most modern of the C & B Line fleet. She is a 10,000 ton vessel with a 10,000 horsepower engine and a 10,000 ton capacity. She is the largest and most modern of the C & B Line fleet.

Your Printing