

IT'S WORTH WHILE TO KNOW ALL ABOUT THE ELCAR

There is no automobile made that is more entitled to close, diligent inspection than the ELCAR. The thoughtful buyer who has knowledge of automobile construction will find in this car an automobile built to meet his most exacting requirements.

LET US TAKE YOU RIDING

We shall be pleased at any time to give you a practical demonstration of the unique qualities of the ELCAR. We want you to know how complete it is in its equipment and how perfect it is in performance.

Make an appointment for a demonstration any time. Ask for the Catalogue we have for you.

IMMEDIATE DELIVERIES

FITZSIMMONS AUTO CO.

455 Main Street East, Rochester, N. Y.

Distributors for Monroe, Livingston, Ontario, Wayne and Steuben Counties

Good Territory Open to Live Dealers.

Write or Wire at Once for Proposition

PLAN TO REMEDY IGNITION PARTS

Expert Discusses This Important Section of Motorcar's Nervous System.

EXAMINE ALL CONNECTIONS

Make Sure That All Wires Are Tight and That Insulation Is Not Worn Off at Any Spot, Thus Causing Short Circuit.

The best way to locate any electrical trouble is to begin at one end of the ignition system and make a series of tests in regular order. Begin first with the spark plugs under suspicion, writes W. H. Stewart, Jr., president of the Stewart Automobile school, in an exchange.

Moisture on the exposed part of the porcelain will often cause the engine to misfire, but this trouble on a wet day may be obviated by greasing the porcelain with vaseline. Including defective porcelain, other frequent causes of spark plug trouble may be traced to oil or particles of carbon collecting between the points and sooting of the porcelain; points out of adjustment or burned away. Ordinarily the spark plug should be adjusted to about the thickness of an old worn dime, dependent upon the ignition system, carburetor adjustment and design of the engine.

Look at Distributor Case.

When you have eliminated the spark plug, examine all wiring and terminal connections, making sure that all wires are tight and that the insulation isn't worn off at any place, thus causing short circuits. Next open the distributor case and see if there is any dirt or carbon dust. If the trouble is here it can be eliminated by wiping with a clean rag. But if it is yet undiscovered then perhaps the misfiring is caused by the contact points being pitted. These should be cleaned and adjusted very accurately according to instructions of the manufacturer. Also make sure that the tappet spring has not weakened or been broken. Remember that this spring is under a constant strain and it will bear watching.

Cause of Serious Misfiring.

Moisture or grease on the surface of the distributor housing will sometimes cause very serious current skips across the surface of this foreign matter instead of going through its regular channels. The remedy is to wipe off the surface. The presence of moisture may be explained by the fact that it is drawn in with the air through the radiator or may condense on the surface on a damp day. The grease often collects from the oil spray thrown out by the engine.

The ignition system is a delicate assemblage and it is up to you to keep your eye constantly upon it. Little attentions like these give you a smooth running engine and help you to eliminate expensive repairs.

SPRING LEAVES NEED OILING

Thorough Cleaning and Lubrication of Various Parts Make Car Ride Easier.

In speaking of care of automobiles Mr. E. B. Dale, who is in charge of the automobile course at Colorado agricultural college, says, "People will find that a little care with the springs of their car will make riding easier by many per cent. All it takes is care. Anyone who is getting his interior self shook up and turned over every time he takes his car out will find this advice worth while: Remove the springs, take them apart and remove all dirt and rust which is between the spring leaves. Polish the parts of the leaves which rub together. Assemble, using plenty of graphite grease between the leaves. The result is gratifying."

AUTOMOBILE NEWS

Proper steps must be taken to prevent steel rims from rusting.

If the sliding member of the clutch is rusty it will give the effect of a grabbing member.

A generator commutator in good condition shows a smooth, glossy surface of dark purple hue.

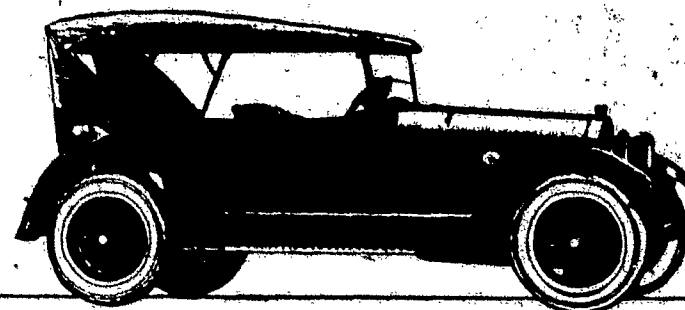
A dust cover made of unbleached muslin large enough to cover the car with the top up, is a good investment.

Don't try to economize by purchasing the "just as good" oil. Buy the right, best grade and change the supply about every 500 miles.

Cuts in casings, if allowed to go without proper attention, soon form what are known as blisters, which usually cause blowouts in a tire.

It is very important that regular inspections should be made of the leather coverings or "boots," which protect the universals and other parts.

When, in the course of operation, valve springs become weak, they should be stretched or else have a washer placed under them.



OF the 206 officials, department heads, superintendents and foremen who supervised the design, purchase of materials, manufacture and distribution of the first eight-cylinder Cadillac, 179—or nearly 87 per cent—are still with Cadillac, exercising the same supervision over Type 59. Associated with them are more than a thousand of the original group of Cadillac eight-cylinder craftsmen.

C A D I L L A C

MABBETT MOTOR CAR COMPANY, Inc.,
157-167 Court Street. "Twixt South and South."



UNITED STATES RUBBER CO.

Sells Everything in Rubber Goods

24 EXCHANGE STREET

WELDING SPECIALISTS

One of the best equipped shops in the State. Our men are experts. No job too large or too complicated. Welders and Brazers of all Metals.

We make a specialty on Aluminum Crank Cases.

12 Years Experience—All work Guaranteed—Prices Reasonable

NEW YORK WELDING WORKS

150 WESCOTT ST. Telephone, Main 7020

AUTO TRUCKS FOR LOCAL AND LONG DISTANCE MOVING

GEORGE P. HOFFMAN CARTING CO.

PIANO MOVING—STORAGE—PACKING

INSTANT SERVICE BY EXPERTS

Trucks for Light Hauling—Baggage Transfer

203 BROOKS AVE.

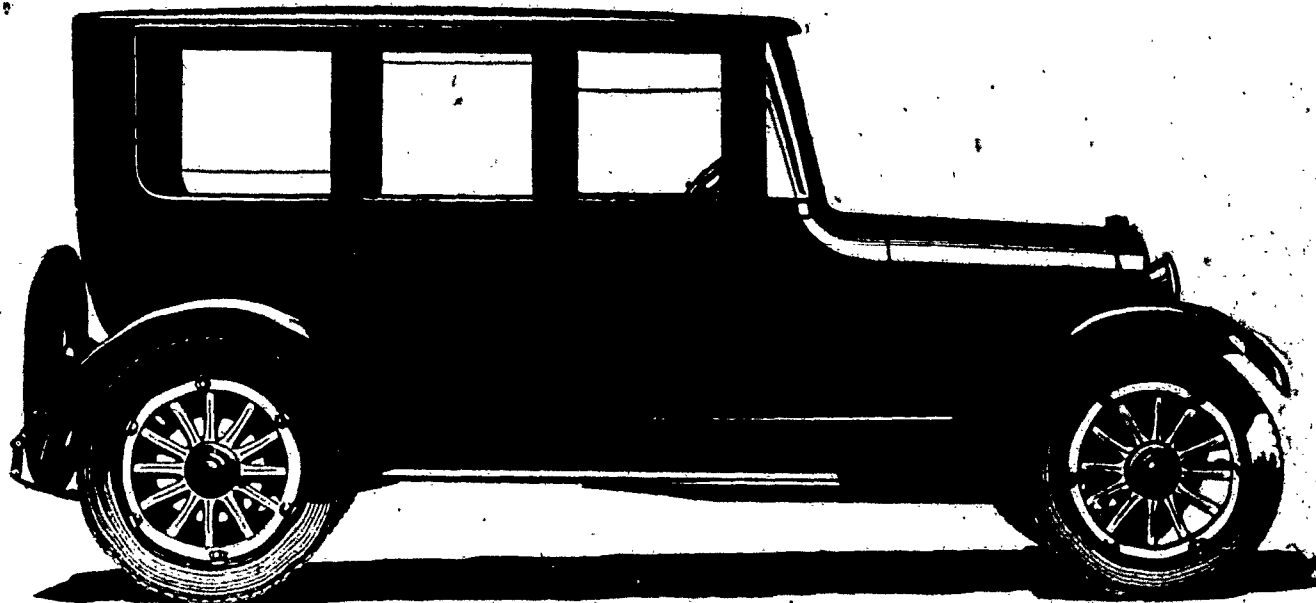
Estimates Cheerfully Given

Genesee 3367

Stone 7027



Reo



THE CAR OF UNQUESTIONABLE VALUE—
THE NEW REO SIX SEDAN

About the nattiest, classiest thing you'll see on the streets is that Reo Six Sedan. We think it is the handsomest equipage that ever came from the Reo shops. Design is a la mode and finish is faultless. Interior is in details and appointments, all the most fastidious could desire. In quality of workmanship, it is in keeping with the Reo chassis upon which it is mounted. You will have to see and ride in this Reo Sedan to fully appreciate its excellence.

Thos. J. Northway, Inc.

100 EXCHANGE STREET

Stone 1224—PHONES—Main 345

