

## The Best Way

To get strong and to keep well is to help Nature rebuild and repair the wear and tear upon body cells. Food is not always sufficiently digested or properly used. The best medicine is that which builds up, not merely braces up. This is why Father John's Medicine secures results, which have caused its use for over sixty years. It contains neither alcohol nor drugs. It supplies one of Nature's great food-medicines which can be easily digested and effectively used.



It is a builder, not a mere bracer. Get a bottle today.

For the pleasure of your Motor Trips—

Your car should be equipped with Motor Glasses, a Kodak, and a Field Glass.

Purchase them in either of our stores.

**E. E. BAUSCH & SON**  
Opticians Optometrists  
6 MAIN STREET EAST  
and 15 EAST AVENUE  
Two Stores

## Valspar Renews Linoleum

makes it look better and wear longer. And that's not all it does. Use it as a finish for furniture and woodwork. Neither boiling water nor steam affect it in the slightest degree. It is an ideal vanish.

**BARNARD PORTER & REMINGTON**  
Both Phones 495  
9 North Water Street  
Near Main

**POWERS HOTEL CAFETERIA**  
BEST EATS IN TOWN  
TIME-SAVING  
ECONOMICAL  
Lunch 50¢ Dinner 75¢  
1172-200 500-730  
IN THE RAINBOW ROOM  
Fitzhugh Street Entrance

Established 1890  
**Sidney Hall's Sons**  
Manufacturers of  
Boilers, Tanks, Smoke Stacks  
General Boiler Repairs  
Flues Welded by Machinery  
169-175 Mill Street  
Roch. Phone, Stone 1227 Bell Main 2685  
After 5 p. m. and Holidays  
Bell, Gen. 436 or Gen. 2650

**Automobile Repairing**  
Guaranteed Work: Immediate Service  
Moline-Knight and Chalmers Service  
**O'Grady & Young**  
103 Cortland Street. Stone 7802

New York Auto Tire & Supply Co.  
Agents for All Makes of Automobile Tires  
PORTAGE CORD TIRES  
Automobile Supplies  
Cor. Spring & Fitzhugh Streets  
Phillip G. Hoffman, Prop.  
Main 4395—Phones—Stone 4614

**Empire Tire Works**  
All kinds of Vulcanizing Work Done  
By Experts.  
New and Used Tires and Tubes all sizes  
24 Allen St. opp. Fitzhugh

**ELECTRIC WIRING**  
Old House Wiring Our Specialty  
Reasonable prices and estimates free  
Terms if desired. Main 5089, St. 9034  
**BROWN & PIERCE CO., INC.**

**Burke & McHugh**  
CARTING CO.  
Light Auto Cars for General Delivery  
163 North St.  
Main 7111 Phones Stone 3295

## Marne Memorial Chapel

(By N. C. W. C. News Service)  
Paris, July 1.—Those who fell in the battles of the Marne will be piously remembered by a beautiful memorial chapel which is to occupy a site selected by Marshal Foch. The spot is on the banks of the river Dormans on an elevation commanding the fields where the decisive battle of the war—as it afterwards turned out—was fought. It was at this point, Marshal Foch is quoted as having said, that the German offensive was halted and the tide of invasion was stemmed.



Phone  
STONE 2193  
MAIN 3751  
For Friedler's Celebrated  
**Ginger Ale**  
(Special Blend)  
**Orange Soda**  
(California Brand)  
**Grape Soda**  
(Made from Concord Juice)  
**Sarsaparilla**  
(A Good Tonic)  
**Loganberry**  
(Very Delicious)  
We Make and Deliver  
All Kinds of Soft Drinks  
**Paul W. Friedler**  
80 1/2 Lowell Street

**Sheet Metal Works**  
Tin, Slate, Tile, Asphalt and  
Slag Roofing  
Steel Ceilings, Furnace Work  
Cleaning and Repairing Ventilators  
Blower Pipes, Range Hoods  
General Repairing and Shop Work  
**F. E. HAYES CO.**  
44 Aqueduct Street  
Phones—Main 5703, Stone 7782

Disease Germs Deadly For  
**FATHER MOLLINGER'S  
HERB TABLETS**  
This wonderful prescription composed entirely of leaves, herbs, roots and berries was designed by an eminent priest physician to whom thousands of miracle are attributed. As a bowel regulator, blood purifier and rejuvenator they are prescribed by physicians. They Correct Headache and Stomach Disorders  
A safe and sure remedy for the whole family. Send \$1.00 to-day for 125 tablets which will supply a whole family for six months.  
**Mollinger Medicine Co.**  
93 Mollinger Building  
14 East Park Way (N. S.)  
Pittsburgh, Pa.

There is no white lead in town! But thank goodness, there is a plentiful supply of  
**MOORE'S PURE  
LINSEED OIL PAINT**  
\$4.70 per gal., cash  
FROM  
**HUMPHREYS**  
The Paint Man  
TWO STORES  
24 South Ave. 53 State St.

Don't Get Impatient; That Won't Do Any Good, Just Wait Your Turn for Coal.  
Did you ever see a person get impatient while waiting in line at the ticket office? Didn't get him anywhere. We will let you know a day or two before we are ready, and that's all we can say.  
**FRANCIS M. CHURCHILL,**  
108 Mt. Hope Avenue,  
Chase 257 Stone 781

## Party Conventions Refuse To Endorse Smith-Towner Act

(Continued from page 1)  
Representatives and Senators to pass it. Apparently, members of both Houses declined to undertake such a momentous departure without waiting for an expression of views from the people, or at least from the big parties, and except for the hearings before committees, no action was taken.

## Ireland Active In Mission Work

[By N. C. W. C. News Service]  
Dublin, June 30.—Ireland has organized a mission to China, has established a college in Galway for the training of the missionaries, and has already sent forth a score of priests to preach the Gospel to the Chinese. Other heathen lands are not neglected. Last Sunday the largest ordination held since the foundation of the African missions in Ireland, took place in the African Seminary Church, Blackrock, Cork County. Ten priests were ordained for this mission. They will leave for the West Coast of Africa in the autumn.

## WEEKLY CHURCH CALENDER

**Eighth Sunday after Pentecost**  
Gospel: The Unjust Steward—St. Luke xxi. 1-9.  
S. 18 St. Camillus de Lellis, C.  
M. 19 St. Vincent de Paul, C.  
T. 20 St. Jerome Emilianus, C.  
W. 21 St. Praxedis, V.  
Th. 22 St. Mary Magdalen, Pen.  
F. 23 St. Apollinaris, B. M.  
S. 24 St. Christina, V. M.

Knights of Columbus.  
Fourth degree members should not forget the auto run and dinner dance at the Avon Inn on Tuesday evening, July 20th.  
**ROCHESTER AT HOME 1920**  
Rochester vs. Reading July 18; with Jersey City, 19, 20, 21, 22 with Buffalo, 23, 24, 24, 25.

## New Warehouse Co. In Pritchard Plant

The big fireproof factory buildings at Main street east and the New York Central Railroad that up to a short time ago were occupied and owned by the Pritchard Stamping Company are now converted into a storage warehouse, and operated by the Pritchard Storage and Warehouse Company. Albert R. Pritchard, head of the new concern, has been identified for thirty-three years with manufacturing interests of this city.  
The new storage warehouse has a capacity of five hundred carloads of merchandise, or a thousand automobiles. This concern is to maintain a fleet of long-distance vans, together with quick-moving small trucks. It also plans to establish a regular weekly motor-truck line to and from New York.  
Officers of the new company are: Albert R. Pritchard, president; George H. Robinson, head of the Wall street firm of Robinson & Company, vice-president; James M. Timmerman, for the past eighteen years manager of storage for the Lincoln Safe Deposit Company, of New York, treasurer and general manager; James M. E. O'Grady, counsel. Mr. Timmerman is said to be an expert in his line, having served the Oelrichs, Goellets, Morgans, Vanderbilts, Rockefellers, Jennings and others.  
The new concern is capitalized at \$350,000 with \$300,000 paid in.

## Effective Printing

means good type, good presses, good workmen and good paper. We have the equipment and the workmen for you, and use Hammermill grades of bond, safety and cover papers. Let us show you



ALBERT R. PRITCHARD  
President



GEORGE ROBINSON  
Vice-President



J. N. TIMMERMAN  
Treas. and Gen. Manager

PHONE STONE 438 TO THE PUBLIC: PHONE CHASE 1180

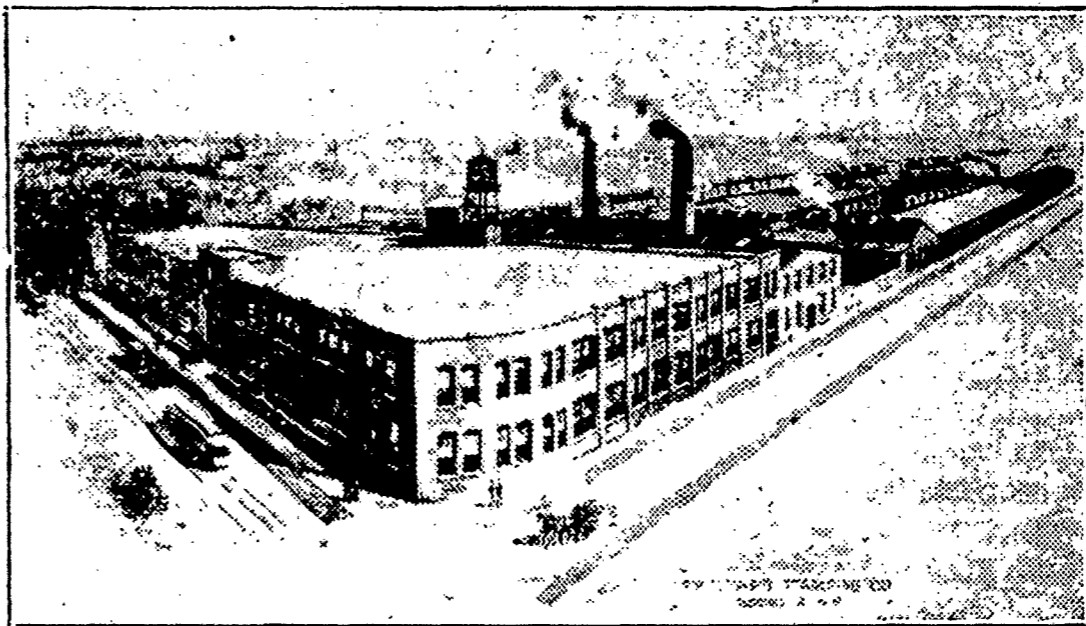
It is with pride and pleasure that we announce the opening of "Pritchard Storage and Warehouse Company" at East Main Street and New York Central Railroad.

## READY TO RECEIVE GOODS NOW

The business of this company is the safekeeping of household effects and merchandise, records and valuables. It is the largest fireproof storage warehouse on the line of the New York Central Railroad between New York and Chicago. Our buildings are fireproof, being fully equipped with a perfect sprinkler system and guarded night and day by competent and efficient watchmen. Our location is ideal, owing to its close proximity to the railroad and trolley systems, as well as city center.

The combined convenience of location, arrangement, superiority of equipment and the courteous treatment of our patrons make this an institution of integrity and success. Your inspection and investigation are invited.

Our personal attention will be devoted to the packing, moving and storing of fine furniture, china, glassware and bric-a-brac, books paintings and works of art, all of which will be handled by experienced packers, and we will be always pleased to furnish estimates for the most economical storage and packing of goods. Warehouse capacity, 500 carloads.



Your goods will be transported to and from our warehouses in special up-to-date vans, horsedrawn and motor, thoroughly padded, thereby insuring absolute safety and care in drayage. We will forward goods to all parts of the world by van or freight.

Our switching privilege affords a great saving in time and money, assuring our patrons the minimum handling and expense.

We furnish you with an accurate inventory upon receipt of your goods, and keep a perfect checking and location system, thereby enabling us at all times to give you access to your effects without delay or trouble.

We have large interior vaults for the protection of valuable records and silver plate.

For your convenience a switch of the New York Central Railroad Company runs into our building, assuring rapidity and convenience of transportation and a minimum delay in handling of goods.

The security and care of your property is our aim, and personal service our promise.

Very respectfully,

## PRITCHARD STORAGE AND WAREHOUSE COMPANY

ALWAYS HEATED . . . ALWAYS WATCHED  
East Main St. and New York Central Railroad  
Stone 438 . . . Capital Stock Fully Paid, \$300,000 . . . Chase 1180

Stupidity can masquerade as dignity, but even that, sometimes, seems preferable to buffoonery.

Milliners and dressmakers are not entirely responsible for church attendance, but they help some.

Tricks of the acrobat are entertaining; so are the tricks of the poet. Who doesn't admire skill?

A peep into the future would probably be as unsatisfactory to most people as a glance at the past.

More than 25,000 persons are employed in the salmon canning industry in the state of Washington.

## What the Sphinx Says.

By Newton Newkirk.



"The man who gets stung in a horse - swap generally regards himself as considerable of a 'jass'."

Lines to Remember.  
Some folks give according to their means, and some according to their meanness.—George Eliot.

## PURE SUGAR HOME-MADE CANDIES

## LYKE'S

Delicious French Ice Cream

Hot Drinks at our Fountain

Corner Main and Franklin Sts. . . . . Opposite East Ave.

Subscribe for The Journal