

Would You Like to Sleep a Little Longer In the Morning?

Yes? Then get a gas range. With a gas range you can get breakfast in a jiffy. No waiting for the fire—the maximum heat is there in a fraction of a second and in addition to that the gas range is easier and cleaner.

You can prove all of the claims we make to your own satisfaction without expense, except for the gas you use.

Ranges at right prices.

'Phone us. Our representative will call for your order.

Rochester Railway and Light Co.

Bell—Main 3960 Home—Stone 3960

Christmas Money for Friends in Europe

Unless you act promptly, money sent to Europe for Christmas will arrive too late. The safest, surest, quickest way is to buy foreign exchange at this bank. Through this bank you can reach your friends in Great Britain, France, Belgium, Italy, Germany, Czecho-Slovakia and other European countries.

Lowest Rates—Quickest Service

ALLIANCE BANK

Member of Federal Reserve
Main Street East and Stone Street

Real Thrift Exponent Is George W. Kelting.



Here is an artist's idea of War Savings Stamps. Although small in price, these Sterling Government securities afford a help to both the investor and to Uncle Sam. As indicated by the cartoon, many small amounts loaned to the government help to defray the big bill of expenses incurred in conducting the greatest democracy of earth, in which everyone may become shareholders. This cartoon is the work of George W. Kelting, Jr., a young man with original ideas and ability. Mr. Kelting is a true disciple of saving, for after surgeons predicted that he would lose the use of his hand the young man succeeded in having the injured member by adopting special exercises, which finally resulted in his regaining partial control of it. He was at one time a correspondent of the Hartford (Conn.) Post and during the several Liberty Loan campaigns contributed several good sketches and cartoons, which were widely appreciated. Now he's continuing his good work by giving a lift to the national war campaign.

250 Years Ago Jesuit Built Bark Chapel on Mud Creek

Two hundred and fifty years ago Monday a bark chapel was built and dedicated by Rev. James Fremin, a Jesuit missionary, who built the chapel in two days.

Location of the monument is on the North Bloomfield road, east of the bridge crossing Mud Creek in the Bristol Valley.

Father Fremin presided at the first Catholic Council held at Onondaga August 26, 1669. He left there in September, spending some time with Father DeCarheil at Cayuga, reaching Gandougarrae (Mud Creek) on November 1, building and completing the chapel which was dedicated November 3.

About 50 Huron captives located in the village of Gandougarrae were Christians converted in Canada by Marquette, Brabeuf, and Lallemand. They had kept the faith for many years without the ministry of a priest and were delighted when Father Fremin came among them. Father Fremin was born in Rheims, France, in 1628. It is noted that he must have observed a vast contrast between the rude bark chapel and the great cathedral in his native city, built in 1311.

In 1670 the little chapel was destroyed by fire, but was rebuilt. Fathers Garnier and Boniface conducting services there later. LaSalle, the great French explorer, visited this section in the fall of 1669 in search of the burning spring of Bristol and explored further West. He and his companion, Gallinee, witnessed the execution of a captive Indian at Gandougarrae; when the victim was brutally maltreated, finally cut in pieces and devoured. The missionaries took great risks and led a life that was a perpetual martyrdom. Many of the Christian Indians were a great comfort to them. James Atondo and Francis Tehorononga led exemplary lives, were familiar with Bible stories and exercised an uplifting influence over their savage brethren.

A portion of Father Fremin's sermon at the dedication services is recorded on the tablet on the monument, which was placed in its present location in the spring of 1918, through the efforts of Rev. James T. Dougherty, pastor of St. Mary's church of Canandaigua. In the sermon Father Fremin urged them to renounce their ways of sin, lead lives of virtue, and secure for themselves an eternal happiness.

Father Fremin died at Quebec in 1691, having spent nearly 20 years of missionary labor among the Senecas and other Iroquois tribes.

The village of Gandougarrae was finally destroyed by DeNouvelle's expedition in 1687 when the inhabitants were driven eastward and a new settlement called Canandaigua was formed where the city now stands.

Demonstration Essential.
"Why was it necessary for you to add anything to the voluminous and enlightening remarks already offered on this subject?"

"It wasn't positively necessary," answered Senator Sorghum, "except on my own account. I had to say something to keep the folks out home from thinking I was losing my influence."

Absent-Minded.
A lady showing evidences of haste entered a street car near the shopping district, and, seeing a friend, she stood in front of her talking.

"Sit down," said the friend, making room for her.

"Really, dear, I haven't time," replied the flustered woman. "I'm in such a hurry to get to the station."

Airplane Factories in France.
The airplane factories in France employed 12,650 workers on January 1, 1915; 30,000 on January 1, 1916; 68,920 on January 1, 1917; 131,551 on January 1, 1918, and 186,003 on November 1, 1918.

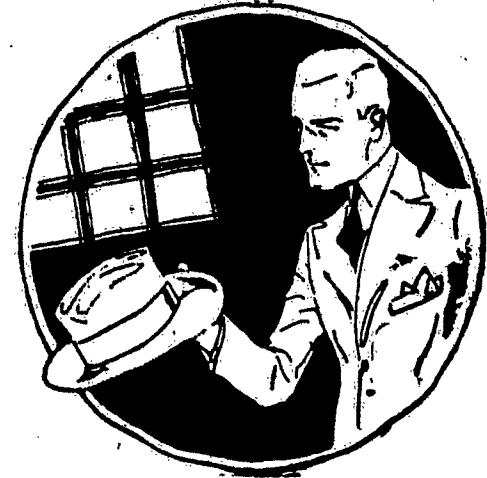
A Giveaway.
Bobby, aged six, answered the door when his big sister's beau called. "Where's your sister?" he was asked. "Upstairs, putting herself on," was Bobby's rather startling answer.—Boston Evening Transcript.

THE MENG & SHAFER

Your Hat--

Not a bit of let-up in our showing of fall and winter styles. The best hats made and the best fashions—all shapes and all shades; soft hats and stiff hats.

Our own special brands, Stetsons, and sole agents for G. B. Borsalino fu Lazzaro imported Italian hats, and Dunlap hats.



Caps--

Men and boys will find here the very smartest caps in town. New patterns and colorings that are exclusive. Look them over.

Your Gloves--

Just the kind of gloves you want, no matter what you want. A large assortment of tan and suede, in light and dark shades, lined and unlined. Heavy gloves for driving. The best quality Fur gloves.

Umbrellas--

If you want a good umbrella, you want a Meng & Shafer Umbrella. Good materials in every one of them. New styles in handles.

The Meng & Shafer Co.
102-104 MAIN ST. WEST
102-104 MAIN ST. EAST

Breslau and Werrenrath To Sing at Next Raymond Concert.

Two of the prominent members of the Metropolitan Opera Company are announced for the second of the series of concerts under the management of V. W. Raymond, who brought the Duncan dancers to Rochester last month. They are Sophie Braslau, contralto, and Mr. Werrenrath, and will be heard in joint recital in Convention Hall on Tuesday evening, November 11th.

Mr. Werrenrath is by no means a stranger to Rochester concert-goers, but announcement of the coming of Miss Braslau is an interesting bit of musical news. Her name is widely known, and last season her achievements in the Metropolitan Opera House lifted her to stardom. This will be her first appearance before a Rochester audience. Miss Braslau is now entering upon her sixth season with the Metropolitan Opera Company. A product of American teaching, born in New York, her accomplishments afford abundant inspiration. Newspaper critics have called her "the Galli Curci of contraltos."

Little need be said of Mr. Werrenrath. His appearance here in seasons past speak for themselves, and he will be remembered by many admirers for the delightful quality of his work. Last year was his first with the Metropolitan and he has been re-engaged for the coming season. He, too, is an American singer, educated entirely in New York City. His position on the concert stage has long been a prominent one. An indication of his wide popularity is seen in the number of symphony orchestras that have engaged him as soloist this season.

SUBSCRIBERS IN ARREARS

for this paper should pay up at once. Neglecting prompt attention to bills only makes final settlement more difficult. What you owe the Catholic paper is a debt of honor and should never be neglected.

Correspondents wanted for several city parishes. Suitable pay given. Address manager.

The city farmer boy who had spent three days on the ranch suddenly disappeared, leaving this note:

"Friend St—I've gone, and I won't come back. You got me up at three with a lantern and I was still chasing the kine into the stable at ten. You don't want a farm hand; you want a night watchman!"—Richmond Times-Dispatch.



DON'T UNDERSTAND?

The marks on the shoe soles mean that by having your shoes repaired here by us, you can multiply the life of your shoes by the figure 2. That's important to know when you see how shoe prices are going up—up—up. Save money and keep your feet comfortable.

Rochester Quick Shoe Repairing
52 South Avenue
Stone 4229

SOPHIE BRASLAU and REINALD WERRENATH
(Contralto) (Baritone)
Excellent Soloists of the METROPOLITAN OPERA COMPANY
In Joint Recital
CONVENTION HALL—Tues., Nov. 11
Raymond Concert Series. Next sale begins Saturday, Nov. 8, at Music Lovers' Shoppe, East Ave. Mail orders filled now. Address V. W. Raymond, P. O. Box 478.

INCORPORATED 1850
Monroe County Savings Bank
35 State Street, Rochester, N. Y.
RESOURCES \$28,400,000
Deposits \$1 to \$3,000
Interest allowed from the first three business days of any month
Dividend declared December 1st, 1919, for six months at the rate of 4 per cent per annum
JAMES E. BOOTH, Pres. WILLIAM CARSON, Sec'y & Treas.
BANKING HOURS:
Daily from 9 A. M. to 3 P. M.
Saturdays from 9 A. M. to 12 M.
Saturday evenings from 7 P. M. to 9 P. M. for deposits only

STONE 720 MAIN 720
F. H. Phelps Lumber Co., Inc.
DEALERS IN
LUMBER, LATH AND SHINGLES, POSTS, SASH, DOORS, TRIM, FIR AND LONG LEAF TIMBER
OFFICE AND YARDS, 256 ALLEN ST.

Fumed Oak Mission Furniture Comfortable, Durable Livable
See the Cozy Flat **H. B. GRAVES CO.** "Rochester's Home Store"
78 STATE ST., ROCHESTER, N. Y.