



During the Christmas or Other Season Articles for the Home that are Durable and Useful are

**Ash, Rubbish and Garbage Cans
Pails, Tubs, Boilers, Buckets, Wash Tubs,
Ash Sifters, etc.**

If Stamped "IRON HORSE BRAND"

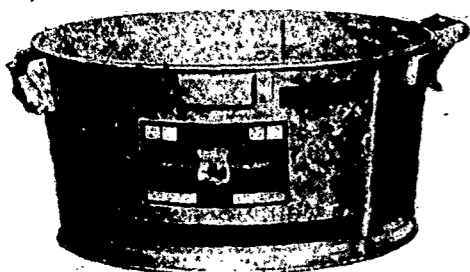
With the RED DIAMOND Label and the RED STRIPE

No Higher Grade Metal Ware Manufactured than the Old Reliable

"Iron Horse Brand"

Buy no other, just ask your dealer, he has them - and be sure and see that each article bears the name of the manufacturer

The Rochester Can Company



Hague Street,

Rochester, N.Y.



The Christmas Doll



There once was a doll on a Christmas tree,
Who sighed to the angel that hung above,
"Oh, how I do wish they would keep for me
A sweet little, neat little girl to love;
"A dear little mother to curl my locks,
To rock me to sleep, and to wake me up,
To dress me in cute little gowns and frocks,
And feed me with milk from her silver cup;
A kind little mother, who'd never say
A word that was angry, nor let me fall,
Who'd always be ready to let me play
With bright little friends who should come to call!"

And, strange though the wonderful fact may be,
That little wax doll's little wish came true;
They picked her right off the Christmas tree,
And gave her my dear little girl to you!



St. Winnifred and the Tree

One story of the origin of the green tree as the Christmas tree among the people of northern Europe is given in a legend of St. Winnifred. It is one of the many thousands of those simple and beautiful beliefs that have attached themselves to the midwinter festival and which generally pass now, under the name of "Christmas myths." It is related that St. Winnifred, a great Christian missionary, began cutting down a "sacred" oak which had been the object of worship by the northern pagans whom he was seeking to lead aright. While he was hewing down the huge tree it was blasted by a sudden whirlwind. Close beside it was a young fir tree, which was not harmed either by the whirlwind or by the fall of the giant oak. Then St. Winnifred is reported to have spoken as follows to the pagans:

"This little tree, a young child of the forest, shall be your holy tree tonight. It is the wood of peace, for your homes are built of it. It is the sign of an endless life, for its leaves are always green. See how it points toward heaven! Let this be called the tree of the Christ Child. Gather about it; not in the wild woods, but in your homes; there it will shelter no deeds of blood, but loving gifts and acts of kindness."

The fir tree, the common evergreen of the northern regions, became the holy tree of the converted pagans, and in its honor or in memory of the thoughts it stood for they decorated it with lights and gifts at Christmas.



NOTHING HAPPENED.



She sat beneath the mistletoe
Without the slightest fear,
She felt no wild, glad tremor, though
She knew he lingered near,
She sat there calm and unafraid,
And sleepily yawned, for they'd
Been married for a year.

CHRISTMAS GIFTS

That Are Always Welcome

Iron Fire Sets

Andirons, Folding Fire Screens, Spark Guards, Open Front Gas Heaters.

Vacuum Cleaners

Carpet Sweepers, Washing Machines, Bread Mixers, Food Choppers, Roasters.

Electric Grills

Toasters, Sad Irons, Disc Stoves, Pocket Flash Lights, Alarm Clocks, Thermometers.

Pyrex Glassware

Cooking and Baking Dishes, Handsome Casseroles and Coffee Percolators.

Johnson Tube Skates

Flexible Sleds, Coaster Wagons, Boy's Tool Chests.

Fine Pocket Knives

Scissors, Shears, Manicure Sets, Vacuum Bottles.

Gillette Safety Razors

Gem and other Razors, Strops, Shaving Brushes and Mirrors.

Community Silver

And Rogers Silverware, Fine Carving Sets, Stainless Steel Table Knives.

MATHEWS & BOUCHER

26 Exchange Street

YOUR CHRISTMAS LIST AS WE SEE IT

- Electric Iron
- Electric Toaster
- Electric Grill
- Electric Coffee Percolator
- Electric Chaffing
- Electric Curling Iron
- Electric Heater
- Electric Sewing Machine Motor
- Electric Vacuum Cleaner
- Electric Washing Machine
- Electric Ironing Machine
- Electric Toy Stove

Such gifts as these serve to keep you in happy memory when Christmas is past and gone.

Rochester Railway and Light Co.

Bell, Main 3960 Home, Stone 3960

With Best Wishes from
Rochester Box and Lumber Co.

Packing Cases of all Kinds
Lock Corners a Specialty

Culver Road Subway

Rochester, N. Y.

ESTABLISHED 1890

SIDNEY HALL'S SONS

MANUFACTURERS OF

**Boilers, Tanks
Smoke Stacks**

General Boiler Repairs

Flues Welded by Machine

173-175 Mill Street

Rochester, N. Y.

Main 2685

Stone 1227

After 5 P. M. Call Bell 'Phones

Genesee 436 or Genesee 2650.

"Present for Presents"

- Bracelet Watches - 14-k solid gold small size, \$25 value, special at \$16.50
- Special 12 size 20 year case Elgin Watch \$12.50
- Diamond Rings \$10 up
- Signet Rings \$2.00 up
- Watches \$5.00 up
- Scarf Pins 50c up
- Cuff Links 50c up
- Lodge Emblems \$1.00 up
- Shaving Stands ... \$2.50 up
- Diamond Rings \$10 up
- Diamond Lavallieres \$5.00 up
- Bracelet Watches ... \$8.50 up
- Cameo Brooches ... \$1.00 up
- Pink Sapphire Rings \$3.75 up
- Gold Lavallieres ... \$1.25 up
- Pearl Beads \$1.00 up

D. PRESENT,

Open Evenings

106 Main St. East, Cor. North Water St.