



GENESEE RIVER AND AQUEDUCT

Facts About Greater Rochester in 1916

Population 260,000, including Charlotte annexed. 23 Wards.

Live Chamber of Commerce, 2,100 members.

Pure water by gravity from City-owned lakes 30 miles distant.

Lake Ontario 7 miles from City center.

Genesee River drops 267 feet in city, developing 50,000 horse power.

Capital invested, \$96,000,000.

Total employees, over 75,000.

Salaries and wages paid annually, \$30,000,000.

Assessed valuation (1915), \$226,200,260.

Valuation in building permit issue (1915), \$9,108,333.

Total enrollment in public and parochial schools (1915), 58,714.

Tax levy in 1915, \$4,457,946.16.

Tax rate, \$19.73.

Theaters, 6; fire companies, 34; firemen, 360; policemen, 371.

New State Armory.

Hotels, 57.

Hospitals, 9.

Libraries, 6; churches, 133.

Large Convention and Exposition Hall.

Value of woodworking output over \$6,000,000 annually.

Large and splendidly equipped public market.

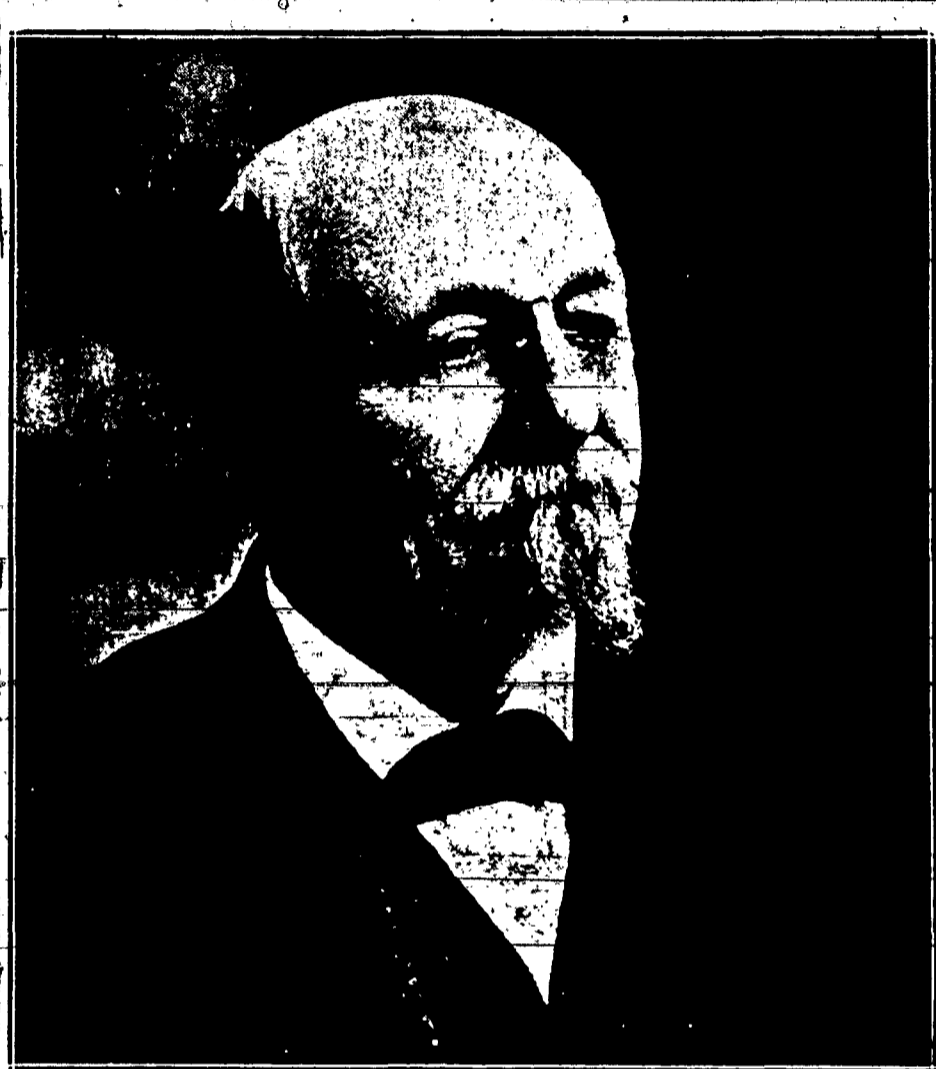
Largest preserving establishment in the world.

Seven steam railroads and seven trolley roads enter the city.

Erie Canal transportation facilities.

Over 149 miles of trolley road inside city.

Annual output of beer and ale, 250,000 barrels.



HON. HIRAM H. EDGERTON
Mayor of the City of Rochester

2 Car ferries making round trips daily the entire year between the port of Rochester and Coburg, Canada.

Manufacturing establishments over 1,400.

Over 325 distinct commodities manufactured.

Rochester is the world's headquarters for photographic goods and supplies.

Rochester is one of the largest shoe centers of the United States.

Forty-six boot and shoe manufacturing factories.

Total output, \$17,000,000.

Total output of leather and leather manufacturing goods, \$25,000,000.

Total output of high-grade men's clothing, \$23,000,000.

Increase of \$775,000 per year during the last ten years.

Largest manufacturers of filing devices and office systems.

Largest custom fur tanning establishment in the United States.

Largest thermometer plant in the world.

Largest optical works in the world.

Sixty per cent. of the carbon paper and typewriter ribbon made in the United States is made in Rochester.

Rochester produces more high class ivory buttons than any other city in the United States.

Rochester and its immediate vicinity are the headquarters of the nursery business in the United States.

Total area, 16,000 acres; five large and twenty-five small parks, containing 1,603 acres; lake park, area, 502 acres.

Exposition Park, area 42 acres; buildings 8, including auditorium; exposition building, zoo, aquarium, shop school, etc., band stand.

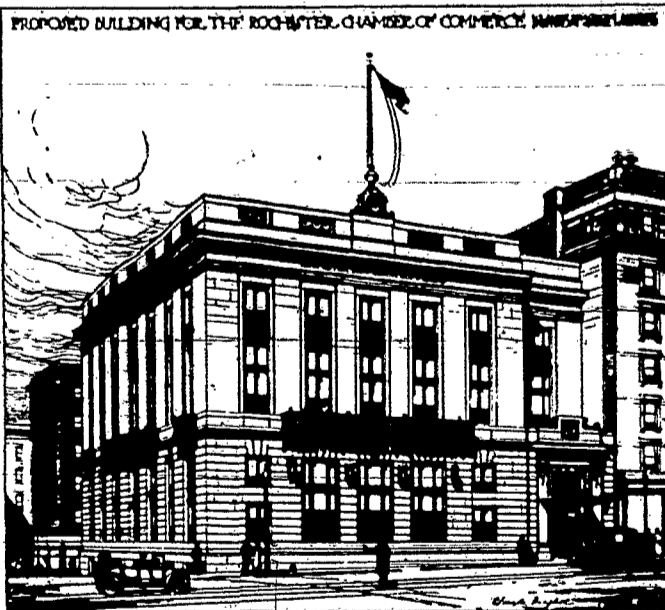
Estimated value of property, \$600,000.

Bank deposits in 15 banks (1915), \$185,000,000.

Wilson Brothers FLOUR

Gluten, Graham, Entire Wheat, Rye,
Self-Raising and Table Bran

On Sale by Sibley, Lindsay & Curr Co. Rochester, N. Y.



Wollensak Optical Co.

MANUFACTURERS OF

Photographic Shutters and Lenses

SPECIAL LENSES FOR ALL PURPOSES

Rochester, N. Y.

Leach Shoe Co.

Rochester, N. Y.

ICED TEA LEMONADE

JUGS AND GLASSES

And Other Seasonable Glassware

Sterling Silver, China, Glassware, Art Wares, Etc.

Dudley, Given & Co., INC.

11 East Avenue

Rochester, N. Y.

Graham Sanatorium

1100 South Avenue

Surgical Patients Preferred

Phones 2000

Rochester, N. Y.