

HELPFUL HINTS FOR HOUSEWIVES

Combination Table, High Chair and Tea Cart.



A new piece of household furniture which will be well received by reason of the fact that it performs several valuable functions is a combination table, high chair and chair.

Escaloped Clams. Cook baked bread overnight in rich milk, draining the crusts. If fresh clams can be obtained, good luck; if not, use canned ones.

Raspberry Vinegar. Pour two quarts of vinegar over four quarts of raspberries. Cover it and put it in a cool place for two days.

Strawberry Preserves. Rinse in colander four pounds of freshly picked, large berries and drain and remove the stems.

Milk Shake. Flavor rich milk or if preferred, half milk and half cream with vanilla and add the well beaten white of one egg and sugar to suit the taste.

Ginger Ale. Put one quart of chipped ice into a gallon jug, add one pound of sugar and one tablespoonful of strong ginger and shake the mixture well together.

To Clean Lace. The clean real lace place it between folds of tissue paper well sprinkled with calcined magnesia and put between the leaves of a book under a weight for two or three days.

Renovating Berse. When a dark serge suit or dress gets shabby press it with hot vinegar and sponge it in the usual way.

PLIGHT OF A POET.

His Vivid Imagination Once Nearly Got Coleridge In Trouble.

From his early youth Coleridge lived in a world of books and dreams, yet his favorite walk seems to have been the Strand, the last place in the world for a poet to lose himself in reverie.

ORDER OF THE BATH.

It Was a Realistic Ceremony in the Times of Charles II. The last Knights of the Bath made according to the ancient forms were at the coronation of Charles II.

As soon as he was quite dry he was removed from the bed, dressed in new and rich apparel and conducted by his sponsors to the chapel where he was offered a taper to the honor of God and a penny piece to the honor of the king.

Churchgoers who follow the service in their prayer books would certainly miss the "dear old phrase" concerning "quins and places where they slog."

Seventeenth Century Sheep. "The best and biggest sheep," says Fuller in his famous "Worthies of England," published in the year 1632.

Locating the Laugh. Once upon a time the Wolf Hopper was required to play Fustaff in a special performance of "The Merry Wives of Windsor."

They Came Back. "How's this son? Yesterday you cleaned up the back yard nicely, but today it looks worse than ever."

Last Resort. "Well, we have exhausted reason, logic, common sense and justice. What more can we do?"

A Lady of Music. "He-I took Mand to a musical evening last night. She-Was it good? He-I don't know. I didn't hear much of it. Mand was telling me how fond she is of music."

What do we live for if not to make the less difficult to each other?—George M. ...

IN THE WORLD OF SPORT

Wilbert Robinson, Manager of Brooklyn Nationals.



Photo by American Press Association

One of the most remarkable spurts in the baseball world is that of the Brooklyn National league club. Brooklyn now is a pennant contender, being very high up among the leaders.

Detroit's Outfield. From Providence comes the following query: "Which do you think the better outfield, Boston's or Detroit's?"

Edwards in a Walk. In a walk, says Henry P. Edwards in the Cleveland Plain Dealer, where Boston has a star pitching staff and corking lead infield to keep itself in the race.

Reds Let Out Star Club. With the past six years there have been several star players out of the Boston club.

Taber to Try For Half Mile. Nathan S. Taber of the Boston Athletic Association, who recently set a new record of 1 minute 12.3 seconds for the half mile, has a new record in the pocket.

Another Californian to Fore. California, producer of champion high jumpers and tennis players, seems to have another world beating leaper in prospect.

Griffith's Selection. The American League race is as "open as the Panama canal," according to Clark Griffith, Washington manager.

Griffith's Selection. The American League race is as "open as the Panama canal," according to Clark Griffith, Washington manager.

Griffith's Selection. The American League race is as "open as the Panama canal," according to Clark Griffith, Washington manager.

Griffith's Selection. The American League race is as "open as the Panama canal," according to Clark Griffith, Washington manager.

POPULAR MECHANICS

When the Engine Overheats.

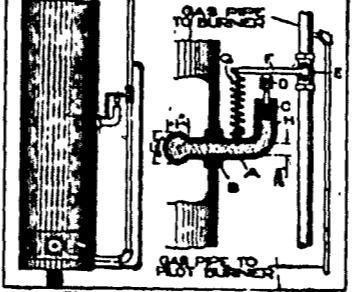
If your engine overheats readily examine the fan belt to see if it is slipping. If this is all right feel the radiator after the engine is warmed up and see if it is cool at the bottom and hot at the top.

A Hint to Car Drivers.

When a driving pinion is damaged a loud knocking is heard in the rear axle and usually there is an unpleasant jerking. This indicates that teeth or parts of teeth have been broken off and are being caught between the gears.

Water Heater Controller.

The device shown in the sketch is for automatically controlling the temperature of the water in a water heater or says Popular Mechanics it consists of an iron casting, A, screwed into the water tank at B, a steel bolt, C, an adjusting nut, D, and a gas valve, E, with an arm, F, which is



DETAILS OF WATER HEATER.

held against the nut D by the spring G. When the arm is in a horizontal position the valve is closed.

The control mechanism is shown large in proportion to the tank so that its construction may be clearly understood.

Finding a Squeak.

When your spring leaves are working and the grease cups are working properly and there is still an annoying squeak about your car investigate between the body and the frame. Often there are spots where the frame greases slightly and rubs against the body.

Engine Lubrication.

Finely pulverized graphite is a lubricant for any engine if applied through the crank case in the proportion of a teaspoonful of graphite to a gallon of oil.

Greasing the Springs.

Some car owners mix graphite with gasoline when they want a lubricant for the springs. The advantage of gasoline over grease for this purpose is the fact that when the gasoline evaporates you have just the graphite between the leaves, and as it works out it blows off whereas grease would stick and accumulate dirt.

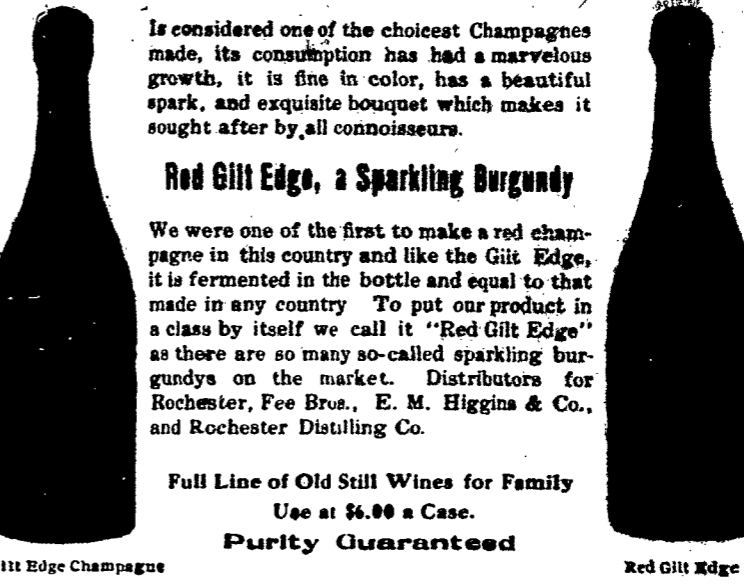
Care of Contact Points.

A good way to brighten up the contact points on a magnet or on ignition coils is to fold over a piece of fine emery cloth and work it back and forth between the points while pressing lightly on the upper contact. This scheme cuts both contacts evenly.

Oil For Valve Grinding.

In grinding valves with fine emery powder try using lard oil instead of kerosene. It will make your parts, and you will be surprised to see how much more rapidly the new mixture cuts.

Gilt Edge Champagne



Is considered one of the choicest Champagnes made, its consumption has had a marvelous growth, it is fine in color, has a beautiful spark, and exquisite bouquet which makes it sought after by all connoisseurs.

Produced by HAMMONDSPORT VINTAGE CO. Penn Yan, New York

Trott Brothers Co. Inc. MONUMENTS AND MEMORIALS Granite, Marble and Bronze 1120 MOUNT HOPE AVENUE

OSBURN HOUSE Rochester N. Y. The only first class American Plan Hotel in the City Rates, \$2.50, \$3.00 and \$3.50

Hibbard, Kalbfleisch & Palmer MEMBERS New York Stock Exchange New York Cotton Exchange Chicago Board of Trade 100 Powers Building

German American Lumber Co GET OUR PRICES 142 Portland Ave. 888 Clinton Ave. S Both Phones, Home 1865, Bell 1246

NEW YORK EXCURSION

Thursday, August 12th Final Return Limit, August 21st

\$10.70 ROUND TRIP

Beaches near New York, where you can spend a salt water vacation. Accessible by Trolley, Elevated Railway, Subway trains, Steam Trains and Boats.



FARE \$3.00 DAILY BETWEEN BUFFALO & CLEVELAND

The Great Ship "SEEAHNDRE" The largest and most easily steered on any inland water of the world. Sleeping accommodations for 100 passengers.