

Midway at the Panama-Pacific Exposition Will Be the Most Striking and Original of All

By HAMILTON M. WRIGHT.

FOLLOWING the battleship parade into San Francisco harbor—the opening event of the Panama-Pacific International exposition in 1915—there will be a program of events of world interest and importance in a succession of two months apart, interspersed with lesser events; Yacht and motorboat races of an international character for great trophies and cash prizes; aviation meets with the famous bird men of the world; Olympic games, in which the athletes of the world will take part; intercollegiate contests; automobile races, in which the holders of the world's records will participate in the automobiles of every nation; military maneuvers, in which the crack cavalry and infantry of this and other nations will participate upon an extended scale. The location of the exposition gives widest scope for the greatest international sports program in history. The auto races will pass into Golden Gate park before the huge concrete Coliseum seating 75,000 people. The military maneuvers and Olympic games will also be held in the Stadium. On San Francisco Bay motorboats will vie for the world's records before the Harbor View site of the exposition. Noted yachtsmen will sail from Europe across the Atlantic to New York and then through the Panama canal to San Francisco. Personal invitations will be extended to the foreign rulers to attend the exposition if possible or to be represented by their diplomatic representatives in the royal yachts.

The concession and amusement features at the exposition will be among the most striking and original ever displayed. The "Midway" will be located at the Harbor View site of the exposition, the location of the night life of the exposition, and every possible feature that can be conceived as appropriate to an exposition will be shown. The Chinese residents of San Francisco have under way a project for a great Chinese concession which will be surrounded by a replica of the great wall of China, including within its environs a series of Chinese communities and embracing every possible feature of interest in Chinese life from the manufacture of silks and ivory and woodcarving to sampans and junk boats on miniature waterways and

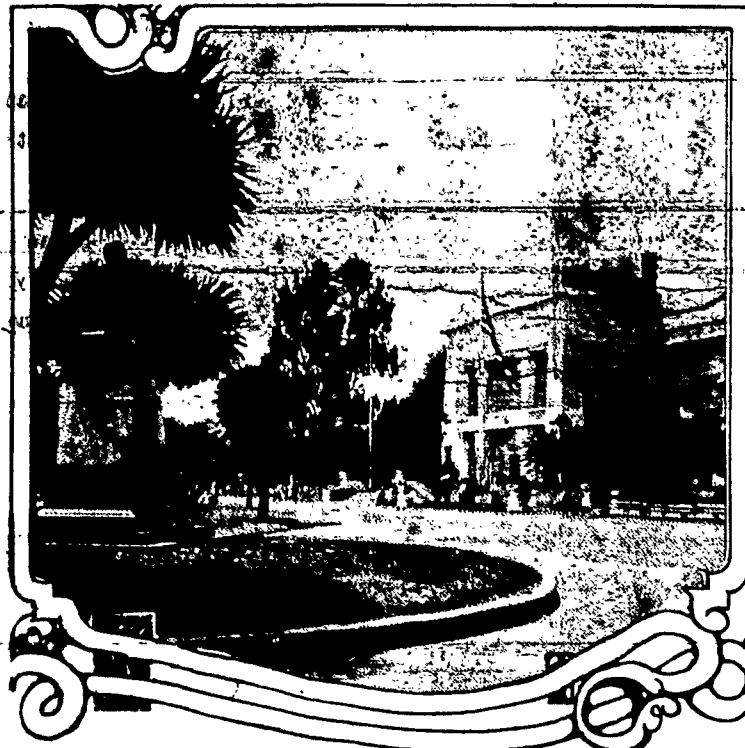
itself one may look out over the bay through the Golden Gate to the Pacific ocean. At night Harbor View will be brilliantly illuminated with incandescents, flourescent lights and waterfall illuminations. A chain of lights will stretch across the Golden Gate, the international fleet of battleships in the harbor will be illuminated, a huge

commemorative structure towering 1,300 feet above the Golden Gate will be surmounted by a searchlight, and its outlines will be lined with incandescents. In fact, the contours of the exposition site will be visible for miles away.

The west will be on exhibition to those who view the Panama-Pacific In-



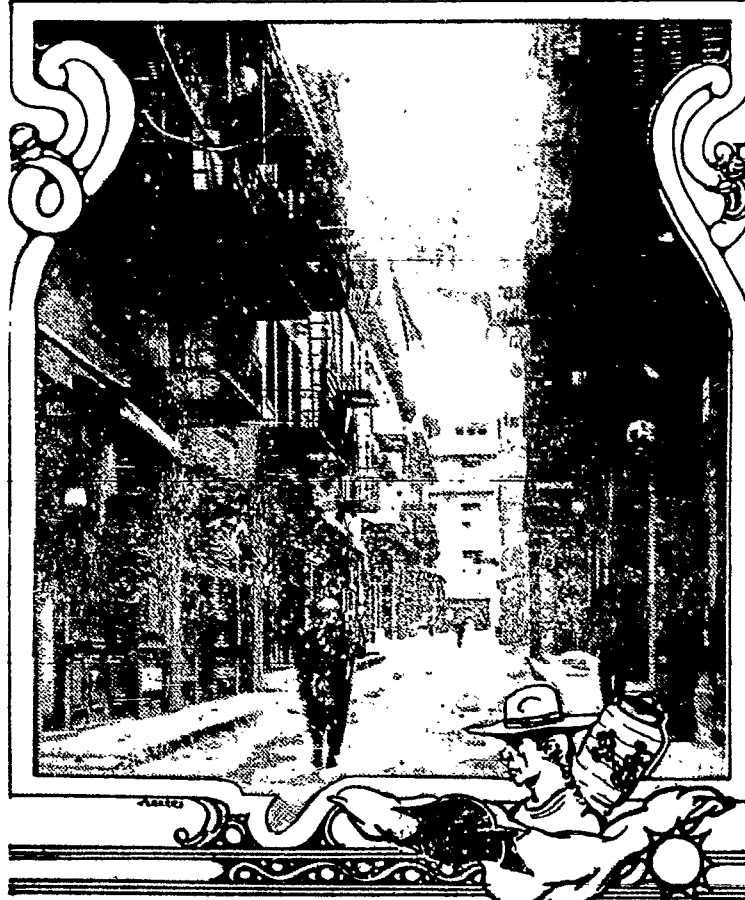
JAPANESE TEA GARDEN IN GOLDEN GATE PARK, SAN FRANCISCO
Japan will make the greatest exhibit ever shown from the Flowery Kingdom at the Panama-Pacific International exposition at San Francisco in 1915.



THE MUSEUM IN GOLDEN GATE PARK, SAN FRANCISCO.
Amid semitropical settings will be located the permanent features of the Panama-Pacific International exposition to be held in San Francisco in 1915.

portraying the life of the river dwellers around Canton. The concession will cost \$1,000,000, and industrial engineers with American attorneys and engineers will shortly leave for the Orient. From Nevada concessionaires will establish a riproaring mining camp, picturing the days of '49 and the bonanza era of the Comstock lode. Bret Harte's heroes, old Wells Fargo stage drivers, gamblers and gambling, bad men, prospectors, shoot-outs and holdups will lend a realistic touch to the camp.

But the chief charm of Harbor View for most people will lie in its setting on San Francisco bay. As the snow files the site extends along the water front for about a mile, but following the irregular contours of the shore the distance is more than that. Along the entire water's edge at Harbor View will be built an esplanade, or bund, along which visitors may walk, and an existing lagoon will be made the basis of a superb yacht harbor. Classic columns will rise from the water's edge, and near by will be the great exposition structures, the Palace of Liberal Arts, the educational building, the manufactures building and other edifices that house the more serious phases of the exposition, so distinguished from the amusement structures. Harbor View lies as an amphitheater, with its sides the wooded slopes of the Presidio and the tenant hills of San Francisco. It is near the most populous part of the city and is not more than twenty minutes' walk from Nob Hill, where lived the concessionaires of California's early mining days. Looking down from the top one can see all over the Harbor View site, while from Harbor View

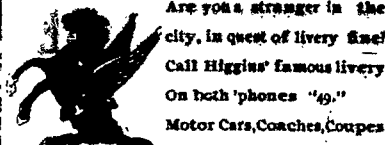


A GLIMPSE OF CHINATOWN, SAN FRANCISCO.
China will display a wonderful exhibit at the Panama-Pacific International exposition at San Francisco in 1915.

"Brother Jonathan." The origin of the term "Brother Jonathan" as applied to the United States is as follows: When General Washington, after being appointed commander of the army of the Revolutionary war, went to Massachusetts to organize it he found a great want of ammunition and other means of defense and on one occasion it seemed that no means could be devised for the necessary safety.

Jonathan Trumbull, the elder, was the governor of the state of Connecticut, and the general, placing the great trust and reliance on his excellency's judgment, remarked, "We must consult Brother Jonathan on the subject." The general did so, and the governor was successful in supplying many of the wants of the army. Thereafter when difficulties arose and the army was spread over the country it became a byphrase, "We must consult Brother Jonathan," and the name has now become a designation for the whole country as John Bull has for England.—C. A. Rombaugh. "Glennings: For the Curious."

Free Burning Anthracite Coal
Egg and Stove \$5.50
Chestnut \$5.75
Pea \$4.50
Per ton delivered



A Wonderful Rochester Cure!
Mr. M. B. McMahon, Mgr. May 11, '11
Eureka Twentieth Century Dandruff Cure and Hair Tonic Co.
Dear Sir—I feel compelled to issue this statement of what your medicine has done for me. It has completely cured me. My hair was falling so fast that I was afraid to comb it. My wife's was equally as bad, but after one application the hair ceased to fall, and one 50c bottle completely cured both my wife and myself.
Very Gratefully,
Frank Wrightman,
255 West Ave., Rochester, N. Y.
Sold by all druggists also Duffy-Powers Co., Sibley, Lindsay & Curr Co. and Edwards & Son. Manufactured by M. B. McMahon & Co., 118 William St., Rochester, N. Y.

Jenkins & Macy Co.
Standard Anthracite and Bituminous Coal and Domestic Coke.
100 Cutler Building, 36 East Ave.
Yards 113 West avenue, 110 Child street, 1045 Main street east.

For Pure Ales Wines and Liquors
Send your orders to
Matthews & Servis Co.
95 STATE ST
Both Phones 9075

The Best Remedy Jackson's Cough Syrup 25c
Geo. Hahn
Prescription Druggist
561 State Street

Stop That Cough With Broncil Cough Remedy
25c BOTTLE
The Cooney Pharmacies
199 Lyell Ave. 858 Dewey Ave.
Home Phone 1111 Bell Phone 3125 Chase

W. H. FRICK
FUNERAL DIRECTOR
494 South Ave. Cor. Alexander

Palace Photo Studio
Findlay O. Kain, Mgr.
15 Clinton Ave North
High-Grade Portraits
Copying and Enlarging
Photo Postals Finished in 10 Minutes
Our specialty. All work guaranteed or money refunded. Amateur finishing, enlargements from your old negatives. Always open.
Home Phone 31 Bell Phone 1588 Chase

JOHN C. ROSSENBACH
Funeral Director
Office and Residence, 438 Wilder Street

Rochester Costume Co.
374 Court Street
Masquerade and Theatrical Costumes
Mrs. E. Maloy, Mgr. Roch. Tel. 3508

The Turkish Bath Co.
44-46 N. Fitzhugh St.
Near Post Office
Always Open. All kinds of Baths for Men and Women.
The Best in the State

JOSEPH H. OBERLIES
ARCHITECT
Office-838, 840, 842 Granite Bldg
Home Phone 3667

Lewis Edelman Dealer **COAL**
Telephone 456 Roch. Phone 2480
88 Portland Ave. 348 Exchange St
Near N. Y. C. R.

M. L. HUGHES,
Real Estate and Insurance
Appraisals Made on all kinds of City and Farm Property. Loans Negotiated. Property Carefully Insured. Rentals and Real Estate Collected.
520 Livingston Building, 11 Exchange St.
Roch. Phone 2772 J
At Residence, 42 Tremont St. Bell Main 3425 J

MISS ELIZABETH MCGARHAY
VOICE CULTURE AND PIANO
64 Gibbs St.

Wm. H. Rossenbach
Funeral Director
Office and Parlors Both Phones
317 West Avenue
Branch Office, 520 North Goodman Street

NOTICE
The Cumberland MEAT MARKET
H. F. SCHEUTZOW, Prop.
REMOVED TO
180 North Street
Watch our windows. Keep your eyes open for bargains. Prices lower than elsewhere.
Dealer in
Choice Meats and Poultry
Vegetables in Season

Thos. B. Mooney
Funeral Director
REMOVED
To 98 Edinburgh Street,
Temporary Office, 263 Plymouth Ave.
Lady Attendant
Roch. Phone 9418 Bell Phone 197 A

Established 1873
L. W. Maier's Sons
UNDERTAKERS
150 Clinton Ave. N.
Phones 609

FRANK KLEIN
Livery & Boarding Stables
Also Horse Clipping Done
431 State St.
Opp. R. W. & O. R. F.
Bell Phone Main 4025 Home 4623

FRANK W. ROSSENBACH
Funeral Director
131 Allen Street

RYAN & MCINTEE
UNDERTAKERS
196 Main St. West
Home Phone 1464 Bell Phone 8929

HILDEBRANDT'S
Feed, Poultry, Pets
and Pet Stock Supply House
10 Allen St. opposite N. Fitzhugh

Wm. H. Rossenbach
Funeral Director
Office and Parlors Both Phones
317 West Avenue
Branch Office, 520 North Goodman Street

NOTICE
The Cumberland MEAT MARKET
H. F. SCHEUTZOW, Prop.
REMOVED TO
180 North Street
Watch our windows. Keep your eyes open for bargains. Prices lower than elsewhere.
Dealer in
Choice Meats and Poultry
Vegetables in Season

Thos. B. Mooney
Funeral Director
REMOVED
To 98 Edinburgh Street,
Temporary Office, 263 Plymouth Ave.
Lady Attendant
Roch. Phone 9418 Bell Phone 197 A

Established 1873
L. W. Maier's Sons
UNDERTAKERS
150 Clinton Ave. N.
Phones 609



NEW TEETH
Ready in a Day
Old teeth out in the morning—new ones in by night. Perfect fit—excellent finish.

\$8.00
And not the slightest pain in the operation. VITALIZED AIR—the most wonderful of all pain killers, is free to you.

TAFT'S 187 Main St. E. cor. Stone St.
Phone 1237

CHAS. H. LAMB
FISH AND OYSTER DEPOT
70 Front St. Rochester, N. Y.

Geo. Engert & Co.
COAL
Principal Office and Yard Telephone 25:
306 Exchange Street

French Olive Oil
Fifty Cents a Pint
J. K. Post Drug Co.
17 Main St. E.

THE ECONOMICAL DRUG STORE
Cut Rates on Everything
For coughs and colds try No. 6 250
M. R. Connor, 182 W. Main St.

John Miller
COAL
Wholesale Lumber
826 Clinton Ave. South
Phones, Home 1810, Bell 532 Chase

Roch. Phone 3973 L Bell Phone Main 439 P
Bordick & Silcox Coal Co.
Dealers in
High Grade Anthracite and Bituminous
Best Quality COAL
Office, 273 Smith Street cor. State Street
Residence Phone Main 455 J Rochester, N. Y.

Roch. Phone 4161 Bell Phone 1073 Main
FRANK KLEIN
Livery & Boarding Stables
Also Horse Clipping Done
431 State St.
Opp. R. W. & O. R. F.

Bell Phone Main 4025 Home 4623
Frank W. Rossenbach
Funeral Director
131 Allen Street

RYAN & MCINTEE
UNDERTAKERS
196 Main St. West
Home Phone 1464 Bell Phone 8929

Little Chicks in Season Bell Phone 4641 Main
HILDEBRANDT'S
Feed, Poultry, Pets
and Pet Stock Supply House
10 Allen St. opposite N. Fitzhugh

Wm. H. Rossenbach
Funeral Director
Office and Parlors Both Phones
317 West Avenue
Branch Office, 520 North Goodman Street

NOTICE
The Cumberland MEAT MARKET
H. F. SCHEUTZOW, Prop.
REMOVED TO
180 North Street
Watch our windows. Keep your eyes open for bargains. Prices lower than elsewhere.
Dealer in
Choice Meats and Poultry
Vegetables in Season

Thos. B. Mooney
Funeral Director
REMOVED
To 98 Edinburgh Street,
Temporary Office, 263 Plymouth Ave.
Lady Attendant
Roch. Phone 9418 Bell Phone 197 A

Established 1873
L. W. Maier's Sons
UNDERTAKERS
150 Clinton Ave. N.
Phones 609

FRANK KLEIN
Livery & Boarding Stables
Also Horse Clipping Done
431 State St.
Opp. R. W. & O. R. F.
Bell Phone Main 4025 Home 4623

FRANK W. ROSSENBACH
Funeral Director
131 Allen Street

RYAN & MCINTEE
UNDERTAKERS
196 Main St. West
Home Phone 1464 Bell Phone 8929

HILDEBRANDT'S
Feed, Poultry, Pets
and Pet Stock Supply House
10 Allen St. opposite N. Fitzhugh

Wm. H. Rossenbach
Funeral Director
Office and Parlors Both Phones
317 West Avenue
Branch Office, 520 North Goodman Street

NOTICE
The Cumberland MEAT MARKET
H. F. SCHEUTZOW, Prop.
REMOVED TO
180 North Street
Watch our windows. Keep your eyes open for bargains. Prices lower than elsewhere.
Dealer in
Choice Meats and Poultry
Vegetables in Season

Thos. B. Mooney
Funeral Director
REMOVED
To 98 Edinburgh Street,
Temporary Office, 263 Plymouth Ave.
Lady Attendant
Roch. Phone 9418 Bell Phone 197 A

Established 1873
L. W. Maier's Sons
UNDERTAKERS
150 Clinton Ave. N.
Phones 609