



NEW TEETH

Ready in a Day

Old teeth out in the morning—new ones in by night. Perfect fit—excellent finish.

\$8.00

And not the slightest pain in the operation. **VITALIZED AIR**—the most wonderful of all pain killers, is free to you.

TAFT'S 187 Main St. E. cor. Stone St.

The Cumberland MEAT MARKET

H. F. SCHEUTZOW, Prop.

Dealer in Choice Meats and Poultry

Vegetables in Season

Bell Phone 8046-R Main
Rochester Phone 1873

211 North Street

The Best Remedy

Jackson's Cough Syrup 25c

Geo. Hahn
Prescription Druggist
561 State Street

RYAN & MCINTEE
UNDERTAKERS
196 Main St. West

Home Phone 1484 Bell Phone 898

Wendrick Commercial Training School

340 Graefte Building Established 1900

Perkin Columbian Gold Medal

Shorthand, Touch Typewriting, Bookkeeping, etc.

Positions secured

THE ECONOMICAL DRUG STORE

Cut Rates on Everything

For coughs and colds try No. 6 25c

M. R. Cowar, 182 W. Main St.

Thos. B. Mooney
Funeral Director

REMOVED

To 93 Edinburgh Street,
Temporary Office, 869 Plymouth Ave.
Lady Attendant.

Book Phone 4118 Bell Phone 1271

Clothing

For Men Women and Children

CASH or CREDIT

G. W. BEELER 48-49 Reynolds Arcade
Up One Flight

For Pure
Ales Wines and Liquors

Send your orders to

Matthews & Servis Co.

55 STATE ST
Bell Phone 8715

Established 1873

L. W. Maier's Sons
UNDERTAKERS

150 Clinton Ave. N.
Phone 609

For Any Neglect of

GARBAGE

Collection to insure Prompt Attention

Notify

GENESEE REDUCTION CO.
Foot of Falls Street
Phone 1789 Bell 1789 MEAL

Geo. Engert & Co.,
COAL.

Principal Office and Yard, Telephone 5857
306 Exchange Street.

Phone 1237

CHAS. H. LAMB
FISH AND OYSTER DEPOT

70 Front St. Rochester, N. Y.

MISS ELIZABETH McARTHUR
VOICE CULTURE AND PIANO

54 Gibbs St.

FLOTSAM AND JETSAM.

Don't Be Like Unto One of These in Fur Fashions.

"Don't be too extreme in the matter of furs," advises an expert, "or you will begin to fit in with the description of an overdressed woman given by a wag: 'She carried a sleeping bag by a wag: 'She carried a sleeping bag—I believe she called it a muff—and around her neck she had thrown the ball runner. I expected her to make a raid among the sofa cushions to get material for it.'"

A peculiarly fine quality of black pony skin has put in an appearance, which under skillful treatment is hard to tell from caracul.

Russian braid of silk or satin, often in intricate designs and sometimes merely elaborating a cabochon, ornaments the collars.



EVENING COAT.

resents many smart hats and turbans.

Large white velvet flowers set against a broad band of stunk trim a stunning picture that is smoothly covered with uncut white velvet.

The long "evening" coat that takes straight simple lines is among the latest and best of the season's models. The coat illustrated is exceedingly smart, and the material used is broadcloth, with collar and cuffs of broad edged with plain velvet, but for coats of this kind velvets and satins are used.

JUDIC CHOLLET

This May Manton pattern is cut in three sizes—small 14 or 16, medium 16 or 18, and large 18 or 20. Send to cents to this office, giving number, 624, and it will be promptly forwarded to you by mail. If in haste send an additional two cent stamp for letter postage, which insures more prompt delivery.

SARTORIAL NEWS.

The infinite variety of the Season's Jabots—The Collure.

Jabots in simple plaited apron style are shown, while the fancier varieties in cascade and one-sided effects are to be had in every conceivable modification.

The fashionable arrangement of the hair this season includes a swirl or cluster of loose puffs, but the pompadour remains in vogue. One's own hair may be waved or crinkled to have some body and stand up over the brow and temples, but it is not in first style

JUDIC CHOLLET.

This May Manton pattern is cut in sizes from 22 to 30 inches waist measure. Send to cents to this office, giving number, 627, and it will be promptly forwarded to you by mail. If in haste send an additional two cent stamp for letter postage, which insures more prompt delivery.

to brush it over a roll. One should try to wear the hair along its natural lines. A critic of woman's fashions once said that the only changes ever made in them was in the bulge. One season it was the sleeve that bulged, again it was the hem. The bulge this winter is in the collure, which appears in the middle of the head.

The close fitting skirt, without fullness at the back, is a pronounced favorite of the season. Here is one that is very chic. It is straight and narrow without being extreme.

JUDIC CHOLLET.

This May Manton pattern is cut in sizes from 22 to 30 inches waist measure. Send to cents to this office, giving number, 627, and it will be promptly forwarded to you by mail. If in haste send an additional two cent stamp for letter postage, which insures more prompt delivery.

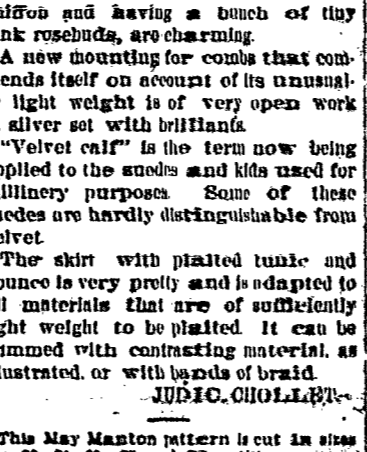
CHIC STYLES.

Stupe Collars on Four Coats—Hats For Small Girls.

A majority of the coats, whether long or short, have collars of long haired fur, and the collar in long haired and soft furs are usually large, extending far out over the shoulders and crossing far out to fasten at the waist line.

Pure white ermine with a border of fine silky black caracul forms an exceedingly chic muff and scarf set.

Little corded mushroom hats of white bengaline, faced with soft white



PLAITED TUNIC SKIRT.

children and having a bunch of tiny pink rosebuds, are charming.

A new mounting for combs that commends itself on account of its unusually light weight is of very open work in silver set with brilliants.

"Velvet calf" is the term now being applied to the suedes and kids used for millinery purposes. Some of these suedes are hardly distinguishable from velvet.

The skirt with plaited tunic and flounce is very pretty and is adapted to all materials that are of sufficiently light weight to be plaited. It can be trimmed with contrasting material, as illustrated, or with bands of braid.

JUDIC CHOLLET.

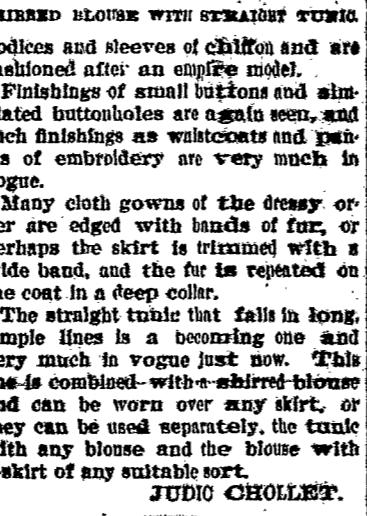
This May Manton pattern is cut in sizes for 22, 24, 26 and 28 inch waists. Send to cents to this office, giving number, 624, and it will be promptly forwarded to you by mail. If in haste send an additional two cent stamp for letter postage, which insures more prompt delivery.

IN FASHION'S REALM.

Jeweled Slipper Heels For the Dance This Season.

Among the novelties of the season are jeweled slippers in Louis XIV. style. A dainty floral design in silver or gold is applied on the toes and a larger design on the heel. So in the dance this winter merrily will glitter.

Smart and pretty are velvet dresses in black or colors. They have



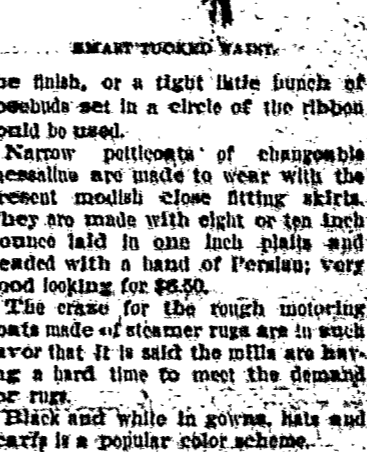
JUDIC CHOLLET.

This May Manton pattern is cut in sizes from 24 to 42 inches bust measure. Send to cents to this office, giving number, 622, and it will be promptly forwarded to you by mail. If in haste send an additional two cent stamp for letter postage, which insures more prompt delivery.

FASHION'S VAGARIES.

Military the Amateur May Suspect—Fully Turn Out at Home.

Children's millinery is so simple this season that much of it could be safely made at home by the amateur milliner. For instance, a dainty yet practical model is a small mushroom of fine felt trimmed around the crown with a ribbon shirred on both edges with cord. At the left front a rosette of ribbon is



SMART TUCKED WAIST.

the finish, or a tight little bunch of rosebuds set in a circle of the ribbon could be used.

Narrow pottocoats of changeable messaline are made to wear with the present modish close fitting skirts. They are made with eight or ten inch flounce laid in one inch plaits and headed with a band of Persian; very good looking for \$6.50.

The craze for the rough motoring coats made of steamer rugs are in such favor that it is said the mills are having a hard time to meet the demand for rugs.

Black and white in gowns, hats and scarfs is a popular color scheme.

The waist that is made with overlapping portions at the front, allowing use of piping, is a new and smart one. The model illustrated is of this description and is as well adapted for the separate blouse as to the entire track.

JUDIC CHOLLET.

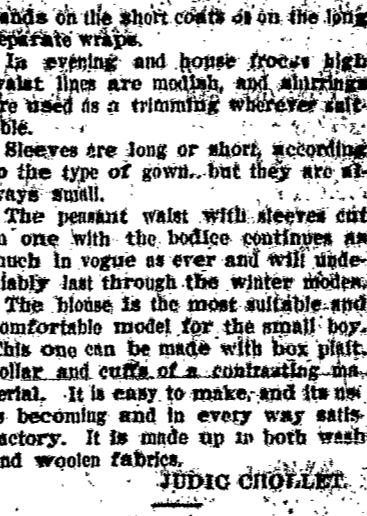
This May Manton pattern is cut in sizes from 34 to 42 inches bust measure. Send to cents to this office, giving number, 624, and it will be promptly forwarded to you by mail. If in haste send an additional two cent stamp for letter postage, which insures more prompt delivery.

ATTRACTIVE TRIFLES.

Fashions That Have Not With Approval from the Authorities.

For the winter wardrobe Lady Fashion has put the seal of her approval on short coats and swept, plain skirts. She also favors the one piece dress for fall wear, and whatever the color of the cloth she recommends a touch of black in the way of satin cording or braid.

Quite modish are the deep sailor collars trimmed with either fur or moire



BOY'S BLOUSE SUIT.

bands on the short coats as on the long separate wraps.

In evening and house frocks high waist lines are modish, and shirtings are used as a trimming wherever suitable.

Sleeves are long or short, according to the type of gown, but they are always small.

The peasant waist with sleeves cut in one with the bodice continues as much in vogue as ever and will undeniably last through the winter modes.

The blouse is the most suitable and comfortable model for the small boy. This one can be made with box plait collar and cuffs of a contrasting material. It is easy to make, and its use is becoming and in every way satisfactory. It is made up in both wash and woolen fabrics.

JUDIC CHOLLET.

This May Manton pattern is cut in sizes for boys of two, four and six years of age. Send to cents to this office, giving number, 624, and it will be promptly forwarded to you by mail. If in haste send an additional two cent stamp for letter postage, which insures more prompt delivery.

Most Nutritious Food Made From Flour

A strong statement—fully backed up by years of testing.

The stomach digests them with pleasure, and sends them on their way to make rich, red blood, sound flesh and tough muscle.

Every ingredient is a strength-giver, scientifically blended and perfectly baked.

Crisp and delicious Uneda Biscuits come to you in their dust-proof, moisture proof packages, clean and clean, and good.

NATIONAL BISCUIT COMPANY

Uneda Biscuits

WB



THE NEW

at the

All Natural Colors

able fabric—both

delicately finished

Your dealer will

best suited to you

Modern, Style 477, for

Agnes, Medium for

and hips. Made of

weight fabric. Most

Modern, Style 444, for

and hips. Made of

weight fabric. Most

Modern, Style 444, for

and hips. Made of

weight fabric. Most

Modern, Style 444, for

and hips. Made of

weight fabric. Most

Don I. Danks

55 Reynolds Arcade

Watches, Diamonds
JEWELRY

ON EASY PAYMENTS

Only First Class Up-to-date Goods

Call and Examine our stock and prices to suit your convenience.

German American Lumber Co.

34 Portland Ave. 665 Clinton Ave.

Both Phones, Home 1241, Bell 1241

Send us your Job Plans