

ADAM'S PEAK

A Shrine Sacred to Three Centing Religious Sects. Throughout Asia "holy places" are almost as numerous as leaves on a tree...

According to the Mohammedan belief, Adam, after the fall, was taken by an angel to the top of Samanalis, and a panorama of all the hills that through sin should afflict mankind was spread out before him...

It requires no little faith and some imagination to trace in the depression in the rock the likeness of a human footprint. It is 5 1/2 feet long by 2 1/2 feet wide, on the top of a huge bowl der.

MINIATURE GARDENS.

Tiny Lakes, Trees and Houses in Miniature Japanese Parks.

The Japanese have the art of dwarfing trees to mere shrubs and of cultivating plants in a similar way. The people take great delight in their miniature gardens, which require a special gardener to keep them down to desired limits.

One such garden shows a lake four feet long and full of goldfish. On the border stands a pine tree exactly eighteen inches high and fifty years old.

One household in Japan boasts of a complete garden contained in a shallow two dozen wine case. Everything is complete down to the fish in the lake, a sheet of water only a few inches square, and the footbridge over the water course.

During the time he acted as United States consul in Glasgow Bret Harte occasionally indulged in a day's sport with the gun, and it was during one of his shooting excursions that the humorist met with an accident which might have disfigured him for the remainder of his life.

Writing about the occurrence to his friend, T. Edgar Pemberton, who quotes the letter in his "Tribute to Bret Harte," the novelist concludes his letter by telling of an amusing effort which was made to console him on account of the accident.

"When the surgeon was stitching me together," he wrote, "the son of the house, a boy of twelve, came timidly to the door of my room."

"Tell Mr. Bret Harte it's all right," he said. "He killed the hare."

Artificial Flowers. It was in Italy that a demand for artificial flowers first arose. This was due primarily to a caprice of fashion which demanded that during festivals blossoms in and out of their seasons should be worn and also to the fact that their color and freshness were stable.

Spitful. At a local picture show a painter hung a notice under his highly prized landscape. "Do not touch with canes or umbrellas." Some one who was not an admirer of his works added to the notice, "Take an ax!"

Disagreeable Economy. Husband—You are not economical. Wife—Well, if you don't call a woman economical who saves her wedding dress for a possible second marriage I'd like to know what you think economy is like.

An Inside Outing. Wigg—The best outing a man can take is an ocean trip. Wagg—Yes, an outing for the inner man as well—Philadelphia Record.

There is no well doing, no godlike doing, that is not patient doing.—The City Titmouse.

ROBUSTIC FASHIONS

People in New Guinea to the Fashionable Points of Society Made Suits. Silk poplin are again sought for the one-piece gowns and separate waists. This season they show a jacquard pattern in the same tone as the fabric.

The fall suits of the ready-made class carry out the slim silhouette, but not in an exaggerated cut—rather by the use of flat bands at the knees or a little lower on the skirt. These bands hold in any surplus fullness in a graceful, sensible way.

A Parisian fancy for the black satin coat suit with collar and revers of coral satin. It is a mode that, it is said, will hold over into winter styles. Suits of velvet or velvet trimmed



AN AUTUMN COAT with fur bands and fur collars and cuffs are to be extremely fashionable this season.

This is one of the natty short suits that are the correct style this autumn. It will be found adapted both to the coat suit and to the separate wrap. Coats, as a rule, are not easily carried out by the home dressmaker, but if this pattern is faithfully followed there is no reason, if well pressed, why it should not be a credit to the maker.

This May Manton pattern is cut in sizes from 34 to 42 inches bust measure. Send 10 cents to this office, giving number, 674, and it will be promptly forwarded to you by mail. If in haste send an additional two-cent stamp for letter postage, which insures more prompt delivery.

JUDITH CHOLLET.

Woman Wear Two Veils—The Nickered Hat Seem a Medish Notion. The combination of colorings in vogue, one over the other, which is such a pronounced vogue in the dress world, has reached the face veils. Not only when motoring will these two veils be worn, but also on the street—mauve over blue, dark blue shadings over rose, etc.

Some of the new large hats have plaits taken in the brim at either side, making a steep standing effect, like a mushroom. A model with plaits at either side of the brim is trimmed



A STUNNING BLOUSE with huge rosettes, which are set on the brim over the plaitings and give the hat a childish appearance that is very fetching.

The nickered-brim is also a modish notion. The brim is sharply bent downward at a point at one side of the center front, so that there is a glimpse of one eye only, the other being hidden by the dent in the brim.

Here is a stunning blouse that is made with several different materials, or if desired it can be evolved from one fabric and look very smart. It has all the new waist features of the season and is most becoming to slender figures.

This May Manton pattern is cut in sizes from 34 to 42 inches bust measure. Send 10 cents to this office, giving number, 674, and it will be promptly forwarded to you by mail. If in haste send an additional two-cent stamp for letter postage, which insures more prompt delivery.

JUDITH CHOLLET.

FORECAST OF FASHION

Up With the Tube Skirt, Down With the Hobble Skirt. The tube skirt is to supplant the hobble skirt. This skirt is narrow, but plain and not bound in. It is a most marvelous thing.

Collar and cuffs in silk are shown in Persian designs. They are plaited and lie flat around the neck and are bordered with plain silk. These make a fine finish for neck and sleeves of a simple silk waist.



UNDERPETTICOAT. dered with plain silk. These make a fine finish for neck and sleeves of a simple silk waist.

Another novelty are cashmere buttons and studs and cuff links which come in enameled china or in ivory, upon which the pattern is sunk. The buttons are quite large.

Waist lines were up, and now they are down; but, with the usual fluctuations, they are going up again. Thus runs the rumor from Paris, the Wall street of fashion.

Don't forget the touch of black, please. If you cannot introduce it on your frock tie a piece of velvet ribbon around the neck, and if your purse will allow clasp jeweled slides over the band.

This is a nicely fitting pattern for an underpetticoat. The skirt is made in five gores. If the habit back is desired the back gores are cut off on indicated lines. When inverted plaits are desired the plaits are laid flat and stitched.

JUDITH CHOLLET.

This May Manton pattern is cut in sizes from 34 to 42 inches bust measure. Send 10 cents to this office, giving number, 674, and it will be promptly forwarded to you by mail. If in haste send an additional two-cent stamp for letter postage, which insures more prompt delivery.

JUDITH CHOLLET.

FRIBBLES OF FASHION. Points for the Tailor Made Woman. Skirts and Coat Sleeves.

The diction as to sleeves is that they shall be small and tight. Many are short, ending above the elbow, though the smartest extend below the elbow and are finished with a lace cuff or underleeves and are rather elaborate



WAIST WITH DOUBLE SLEEVES. In construction. Coat sleeves are also tight and small, with no shoulder fullness.

Evening gowns are sleeveless or made with a perfectly tight fitting sleeve of embroidered net.

The smart coat length is twenty-four inches, although many stylish coats are twenty-six and twenty-eight inches in length. Natty models are on the order of the box coats of several seasons ago.

Tailored suits for the most part are perfectly plain and beautifully tailored, with perhaps a binding of bone or those covered with the material.

Skirts are close fitting and drawn in below the knees with a band which is not too tight. Gored skirts with flat box plaits back and front are good style.

The skirt with front panel and a kilted bonnet from below the knees held by a band is a fall favorite.

Waists made with double sleeves are very fashionable this season. Persian effects are also much in vogue, and the tucked undersleeves and the yoke of the waist illustrated could be effectively carried out in Persian silk.

JUDITH CHOLLET.

This May Manton pattern is cut in sizes from 34 to 42 inches bust measure. Send 10 cents to this office, giving number, 674, and it will be promptly forwarded to you by mail. If in haste send an additional two-cent stamp for letter postage, which insures more prompt delivery.

WOMEN'S FASHION

What the Small Boy and Girl Wear—Shirt Vegetables. A style of suit that is popular with boys of six to nine years of age is the double-breasted Norfolk with roomy cut side and back plaits and large patch pockets. This is made in navy blue, navy blue and dark green wools.

Instead of a single band of bonnet of black satin around the foot of the skirt, some of the new frocks have two bonnets, each about fourteen inches deep, and the upper one fastened only at the top, so that a line of the foundation material shows between the upper and the lower.

To be quite up to date the woman who wears one of the new double



A FINE SCOTCH COAT. scarf of black satin lined with color must wear a black satin hat lined with the same shade as the lining of the scarf.

For school days, and on the song great, the dear old Golden Rule days, this coat is most appropriate. The cape is an especially warm and comfortable addition, besides being extremely becoming to children figures.

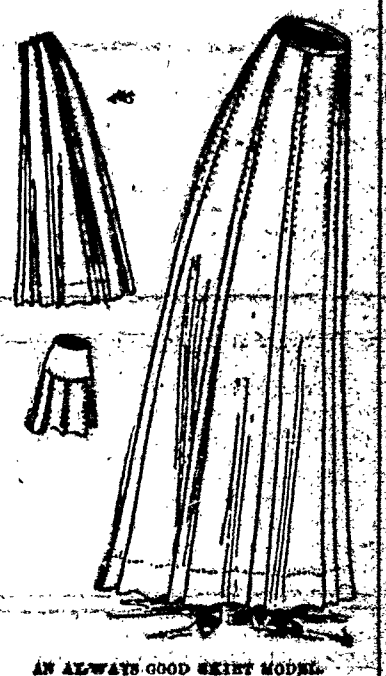
JUDITH CHOLLET.

This May Manton pattern is cut in sizes from 34 to 42 inches bust measure. Send 10 cents to this office, giving number, 674, and it will be promptly forwarded to you by mail. If in haste send an additional two-cent stamp for letter postage, which insures more prompt delivery.

JUDITH CHOLLET.

UP TO THE MINUTE STYLES. The Sailor Collar and Scarf With Suits and Gowns. The sailor collar, with a more scarf and knot characteristic of the style, is courting with the smartest neck fashions in dressy suits and gowns. The style savors of the negligee, and yet when carried out as it should be it is trim and dressy for even an elaborate costume.

If black is not done to death this fall and winter it will be because every one has worn out the style. At this hour hours of black gowns, many of them transparent and over white or



AN ALWAYS GOOD SKIRT MODEL. color, are in evidence. Chastity over white, an old fashion, is very popular, possibly for its quaintness.

The name of the clan is printed on every piece of Scotch suiting, which comes in twenty-five different plaids.

Black and white zebra, stripes and moose mixtures in fine weaves are among the smart new wools at \$2.25 a yard, fifty-four inches wide.

Camel's hair suitings or basket weave in broken check effect are soft and lovely for suits. They are fifty-four, fifty-four inches wide.

The skirt that is laid in plaits at the seams, although not extremely new, is always good style. A yoke comes with this pattern, and the skirt lengths may be fitted to it, but the all-gored effect is better sartorial form.

JUDITH CHOLLET.

This May Manton pattern is cut in sizes from 34 to 42 inches bust measure. Send 10 cents to this office, giving number, 674, and it will be promptly forwarded to you by mail. If in haste send an additional two-cent stamp for letter postage, which insures more prompt delivery.

Soda Crackers Safe From Contamination. UNEDA Biscuit in their dust tight moisture proof package, are protected against all those harmful elements to which bulk soda crackers are open—dust, germs, dampness, odors, handling, and even insects. Maybe you've seldom thought about the matter. Maybe you've never realized as you've tried to eat a tasteless, tough, ordinary cracker, what uncleanness and deterioration it has gone through. Be on the safe side!—Buy Uneda Biscuits! NATIONAL BISCUIT COMPANY

W.B. BRUCE. TELL ME... THE BEST... ALL MODERN... Your dealer will happily get you the best... W.B. BRUCE, 111 N. 3rd St., Philadelphia, Pa.

2+2 ONLY 4c IN STAMPS. FINEST FRENCH PERFUMED. ED. PINAUD'S HIRAZ VIOLET. Write at once to our American Office, 111 N. 3rd St., Philadelphia, Pa.

Kentley 115 Men's Suits. Write at once to our American Office, 111 N. 3rd St., Philadelphia, Pa.