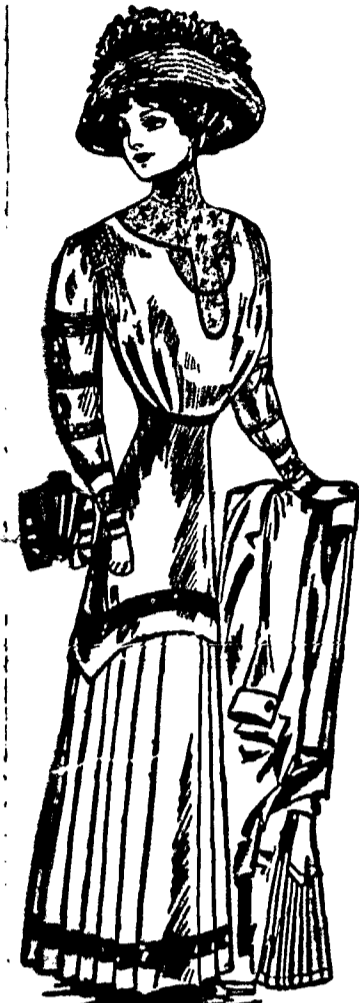


IN FASHION'S MART.

The New Bavarian Girdle—Crochet Buttons For Blouse.



A STUNNING SPRING MODEL.

These come in various sizes, and one sees them at the best fastening and on the cuff.

JUDIC CHOLLET

These May Manton patterns come for the skirt in sizes from 22 to 30 inches waist measure and for the blouse from 34 to 40 inches bust measure.

THE LAW OF DRESS.

We transcend Fashion Rules This Season—Individuality in Clothes.



A NEW EFFECT IN LINES.

And this is the reason why there are so many types of fashion this season.

The collarless linen frock is very smart this season, and this semiprecious model is most effective.

JUDIC CHOLLET.

This May Manton pattern comes for girls fourteen, sixteen and eighteen years of age.

HERE AND THERE.

Belts Are to Be All the Rage—And the New Models Are Stunning.

The black patent leather belt and the belt of colored leather, gaiter silk or velvet combined with patent leather are evidently to be much worn.



TWO FLOUNCHED SKIRT.

will be much improved by covering the fabric with chiffon, laid on flat. Do not attempt to bleach a hat you value until you are sure of the process.

Bloused skirts next summer are going to be very modish, and the model pictured is charming in every way.

JUDIC CHOLLET

GLEANNINGS OF LA MODE.

Pockets, Pockets Everywhere, and Not One Really to Us.



SMART DRESS OF PONGEE.

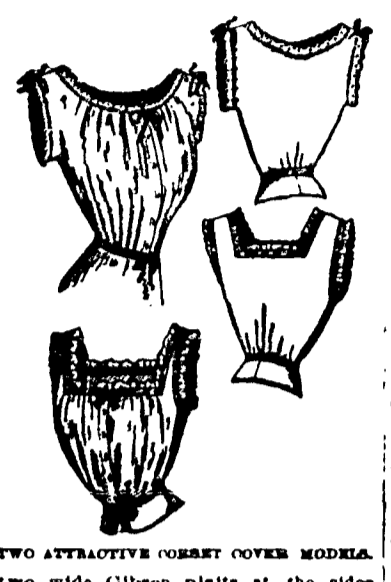
partful to white, and this season will see as many smart white gowns as usual.

Pongee is one of the best liked materials for spring and summer.

DOINGS IN WAISTDOM.

New Materials and Styles That Prevail in the Smartest Tub Blouses.

Crash valencienne, a coarse cotton grenadine weave of unbleached tone, makes some of the smartest new waists.



TWO ATTRACTIVE CORSET COVER MODELS.

two wide Gibson plaits at the sides have side closings finished with buttons covered with the marquisette.

JUDIC CHOLLET

FASHIONS ON THE WING.

Study the Lines of Your Head Before Wearing the New Coiffure.



GIRLS' SUIT OF BLUE SERGE.

means of silk cord handles that are adorned with heavily fringed tassels.

Diagonal weight serge is one of the mod' n' spring materials.

AN ELEVATOR OF SERVANTS

By ESTHER VANDEVEER

Copyright, 1910, by American Press Association

Mrs. Bararole was an up to date woman. She understood the monopoly question, the high price for provisions question and the labor question.

The servant question Mrs. Bararole considered part of the other questions. The condition of the servant market, she argued, grew out of the education of those classes who formerly went into service.

Her plan to produce such a social level was this. She would give an occasional sociable, procure refreshments from a caterer, invite her servants into her parlor and introduce them to her guests.

On the evening of her first soiree there was much agitation in the servants' hall. "What are you goin' to say to the ladies and gentlemen, Ellen?" asked the cook of the waitress.

"I'm goin' to say it's a fine sight and you're lookin' very well this evenin'."

"But suppose the luddy or the gentlemen looks sick?" "It doesn't matter. When the quality meets the compliments fly."

"I scare me," said the cook. "I don't know any compliments to throw at 'em."

"I do," said Thomas, the butler. "Lean up agin me, Marg, an' I'll fire 'em for you."

At this the bell tinkled a signal that the guests were assembling and the servants were expected in the parlor.

Mrs. Bararole, at his wife's suggestion—he knew his peace of mind depended on obliging—took the coachman and the butler to the ladies, introducing them, while the hostess did the same by the women.

"How did you like the drawin' room, Mary?" asked Ellen. "Faith I'd be more at home sittin' on the rugger."

Advertisement for Uneeda Biscuit, featuring the text 'Why— Some few people still buy soda crackers in a bag is hard to say. But it is easy to understand why increasing millions of a Nation's people keep on getting and eating more and more. Uneeda Biscuit (Never Sold in Bulk) 5¢ a Package NATIONAL BISCUIT COMPANY'

Advertisement for Moerbach Bottling Products, featuring a central logo with a crown and the text 'The Only Way to "Make Good" is to Make Good Goods. Moerbach Bottling Products Offer a New and Higher REFINEMENT of HYGIENIC BREWING. PHONES 28'

Advertisement for The Rochester Trust and Safe Deposit Co., featuring the text 'Main Street West, Corner of Exchange Street. Rochester, N. Y. The Largest Trust Company in the State outside of Greater New York. Essentials To Your Welfare. Next to the sources from which the people derive their revenue and livelihood, sound financial institutions are most essential to the general welfare of the citizens of every community.'

Advertisement for Lewis Edelman, Dealer in ANTHRACITE COAL BITUMINOUS, featuring the text '134 Portland Ave. 888 Clinton Ave. S. Both Phones, Home 1265, Bell 1246. Send us your Job Printing'

Vertical text on the right edge of the page, including 'W...', 'Heti to', 'It is a richest has rec and giv ing in l of art. Her l the Co plans f pber C take th art, w the bet out co 'The m lean U. Am. Alres in a s having the its and st being l Our Mrs. J Mrs. I Mrs. C the co Italar It wa Mrs. C broug Miss ( 'We the s about men says I And rance The than I It claim in Ar anser And 'the to or anser fact fed.' Thi one woul Thi is can't food It reat Th anae in co the j El unde can It (som and with go prop Ti the und mar lmi a w A h met 'yb W M are a scal a (5 tan for T six cig col no 932 wh can dir a an off les th s bo on ter ag th