

Robert Mathews

F. H. Boucher

**MATHEWS & BOUCHER**

Wholesale and Retail

**HARDWARE MERCHANTS**

Builders' Hardware  
Carpenters' Tools  
Manufacturers' Supplies  
House Furnishing Goods  
Horse Blankets

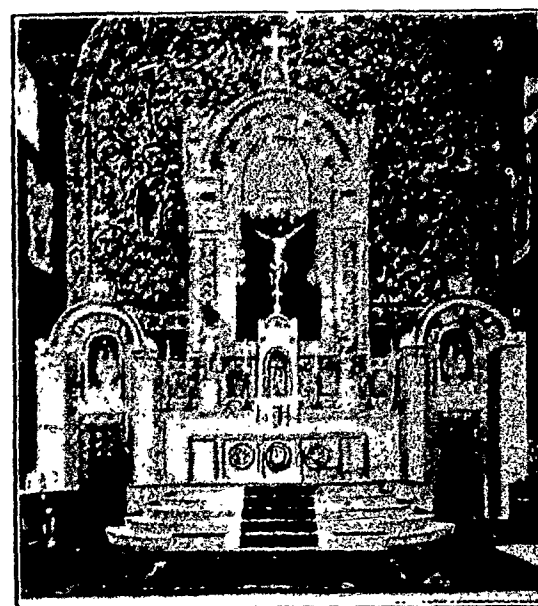


Agricultural Tools  
Tinner's Supplies  
Skates and Sleds  
Cutlery  
Evaporator Supplies

26 Exchange Street

Rochester, N. Y.

**Wood-Mosaic Flooring and Lumber Co.**



High Altar of St. Vincent's Church, Boston, Mass. Parquetry Flooring laid by our agents



Interior Private Chapel in Palace of Bishop of Ottawa, Canada. Parquetry Flooring laid by our Agents. The chapel floor was laid in parquetry squares with a fleur-de-lis centre piece and the border was a maltese cross design.

We can supply appropriate designs in Wood Mosaics to conform to any scheme desired.

For Institutions club rooms, reading rooms, etc., our flooring is extensively used owing to its sanitary advantages as it harbors no dust. It does away with carpets and so saves the janitor's heavy sweepings.

For concrete buildings of fire proof construction our patent steel woven wood flooring makes the only perfect floor. In use in the New Custom House in New York and in Baltimore Court House where it passed through the big fire. Write us about it.



Rochester Agent  
Abner Adams, 58 East Avenue



Saw Mills and Flooring Factory,  
New Albany, Ind.  
Parquetry Factory, Rochester, N.Y.

**DUFFY'S APPLE JUICE 1842**

Sparkling, Non-Alcoholic



The ideal Beverage for home use, banquets and summer outings.

First Class Grocers.

**AMERICAN FRUIT PRODUCT CO.**

Rochester, N. Y.

**E. M. Upton Cold Storage**

Distinctly noticed because of the numerous medals (American, World) awarded as a monument to the business ability and integrity of her citizens and are not equalled by any of her sister cities. Here it is that the American pluck and perseverance have overcome the strongest obstacles and to-day present to the gaze of the world a city of two hundred and fifty thousand souls, possessed of every advantage in the way of facilities for commercial advancement.

There are many houses here that have achieved wide and lasting success and one to which we wish to make special reference is that of the E. M. Upton Cold Storage Co. located at 35 Cliff Street. Their mammoth structure covering more than three acres and having a floor space of more than 220,000 square feet and is the largest and best equipped cold storage

plant between New York and Chicago. They are situated on the N. Y. C. Road and this gives them the very best of shipping facilities.

Almost perfection is the systemization of a business appeared to have been obtained in the conduct of an establishment of the firm whose name heads this sketch.

The business was established several years ago and a large share of their phenomenal success is due to the fact that the Company do just exactly as they agree with all patrons.

Their storage capacity is enormous. They have a capacity for storing 125,000 barrels of apples besides large quantities of eggs, cheese, butter and several other kinds of perishable products. They have low temperature freezers for butter and meats.

The Company gives employment to over 35 men throughout the season. The plant is equipped with auxiliary ice machines and every other known device to the cold storage business.

The personnel of the Company is Messrs E. M. Upton President, W. E. Woodbury, Vice-President, C. H. Palmer, Treasurer, G. G. MacPherson Secretary. The directors are E. M. Upton, W. E. Woodbury, C. H. Palmer, H. C. Brewster, G. W. Archer and Michael Doyle.

Mr. J. H. Walker is in the charge of the cold storage and is a very capable gentleman, having had more than fifteen years in the cold storage business.

The accompanying cut will give our readers some definite idea of this mammoth concern. The officers and directors are all very pleasing gentlemen to do business with.

